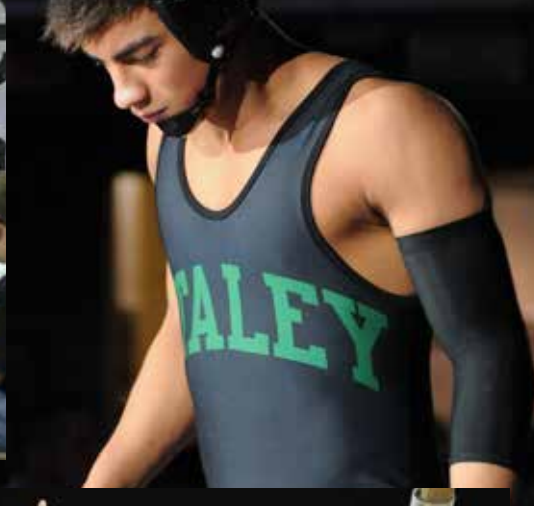


Missouri State High School Activities Association

Journal



Official Publication of MSHSAA

Vol. 78, No. 3

Feb. 2014

Departments

New Summer Policies	1
Questions & Answers	2
News.....	3-4
Administrative Information	5-13
Board of Directors.....	14-18
Fall Athletics	19
Winter Athletics.....	20
Spring Athletics.....	21-24
Activities	24-27
Officials.....	28

Executive Staff

DR. KERWIN URHAHN, Executive Director

Eligibility rulings, transfers, interpretation of Constitution and By-Laws, budget and finance, insurance, litigation, legislative liaison, school classification, enrollments.

STACY SCHROEDER, Assoc. Executive Director

Swimming and diving, Scholar Bowl, Transfers (hardships & waivers), personnel, MSHSAA Leadership School program, eligibility.

HARVEY RICHARDS, Assoc. Executive Director

Football, cross country, track and field, camps and clinics, all-star events, sports medicine, team hosts, nonfaculty coaches, coaches education, eligibility.

DAVINE DAVIS, Asst. Executive Director

Music, volleyball, cheerleading, dance, performing groups, Transfers (foreign exchange/international students), sanctions, eligibility.

KEVIN GARNER, Asst. Executive Director

Basketball, soccer, transfers, athletic directors liaison, waivers, eligibility.

TIM THOMPSON, Asst. Executive Director

Baseball, softball, golf, officials coordinator, officials' registration, officials' rules meetings, special reports, eligibility.

GREG STAHL, Asst. Executive Director

Wrestling, speech and debate, tennis, eligibility.

CRAIG LONG, Chief Financial Officer

Budget and finance, vendor contracts and bids, advertising, corporate partners, awards, orders, buildings and grounds, technology.

JASON WEST, Communications Director

Publications, media relations, public relations, television and radio rights, web site maintenance, records, statistics, sportsmanship programs & Summit, Distinguished Service Awards, Scholastic Achievement Awards, Traditions, student services, video rentals.

February 2014 [vol. 78, no. 3]

The MSHSAA Journal is published four times per year (August, December, February and May) by the Missouri State High School Activities Association.

**1 N. Keene St., PO Box 1328
Columbia, MO 65205-1328
(573) 875-4880, Fax (573) 875-1450
email@mshsaa.org**

All photos by PhotoGliff, unless noted.
© 2011 MSHSAA, all rights reserved.

The Journal is available free on the Association website, www.mshsaa.org. Copies are printed and mailed to all dues-paying senior highs and junior highs. It is also available via subscription for \$8 per school year by calling the MSHSAA office.

Eligibility Rulings

All official eligibility opinions shall be in writing and shall bear the signature of the executive director. Verbal rulings are not official. Principals are reminded that correspondence concerning eligibility rulings, annual eligibility lists, applications for waiver of the transfer rule, hardship transfers and sanction forms, must be signed by the principal for consideration by the MSHSAA.

Missouri State High School Activities Association



2013-14 Board of Directors



Don Maurer, Pres.
St. Louis District
Athletic Director
MICDS
Term Expires 2013



Paul Sulser, V.P.
Northeast District
Superintendent
North Shelby HS
Term Expires 2016



Dr. Mark Beem
Central District
Superintendent
Hickory County
Term Expires 2013



Travis Brown
At-Large Region 1
Athletic Administrator
St. Louis Public Schools
Term Expires 2015



Ken Eaton
Northwest District
Superintendent
Mound City R-2
Term Expires 2016



Mark Fischer
Southwest District
District Athletic Director
Springfield Public Schools
Term Expires 2015



Toni Hill
At-Large Region 2
Superintendent
Bloomfield Schools
Term Expires 2017



Blane Keel
Southeast District
Superintendent
Viburnum R-1
Term Expires 2015



Dr. Paul Kinder
Kansas City District
Superintendent
Blue Springs R-IV
Term Expires 2014



Jennifer Schmidt
South Central District
Principal
Sullivan HS
Term Expires 2014

Mission Statement

"The MSHSAA promotes the value of participation, sportsmanship, team play, and personal excellence to develop citizens who make positive contributions to their community and support the democratic principles of our state and nation."

Contact Info.

MSHSAA

1 N. Keene St., PO Box 1328
Columbia, MO 65205
(573) 875-4880
Fax (573) 875-1450
www.mshsaa.org
email@mshsaa.org

Email Policy: Due to the high volume of email messages received by the Association, an expedited personal response may not always be possible. The MSHSAA staff will respond first to more traditional means of communication such as telephone calls, written correspondence and faxes. The MSHSAA office can be reached at (573) 875-4880 during regular office hours. As time permits, staff will reply to email messages that include the sender's complete name, address and phone number. Questions regarding student eligibility or specific MSHSAA by-laws should first be directed to your local school administrator. By Board policy, our staff is not permitted to answer specific eligibility inquiries via email, and any follow-up questions to the MSHSAA should be done via telephone or written correspondence.



Proud Member
National Federation of State High
School Associations

New Summer Policies for 2014

by **Harvey Richards,**
MSHSAA Associate Executive Director

Member schools voted in new changes for the summer of 2014 including the first allowable practice for fall sports. All participation of students during the summer remains voluntary and cannot be required directly or indirectly for team membership. However, the date for the first practice has been moved up one week for all Fall varsity sports to August 4, 2014. The junior high or middle school first allowable practice date has not changed it will be August 18, 2014.

No Contact Periods

The seven (7) days prior to the first allowable practice date for the season shall be a seasonal no-contact period in which no "contact", as defined in By-Law 3.15.1.c, takes place between school coaches/directors of MSHSAA sponsored fall activities, respectively, and students enrolled in the member school, or who will be enrolled in the member school during the upcoming school year. Further, during this period, athletes for the upcoming season shall not attend any specialized sports camp involving the applicable sport. During the no-contact period if it is not in conjunction with the summertime dead period a student may participate in offseason conditioning.

Each district is responsible for reporting its summertime dead period to the MSHSAA office by April 1, 2014.

The Summertime Dead Period is a period of defined length in which no contact takes place between school coaches/directors of MSHSAA-sponsored activities and students enrolled in the member school, or who will be enrolled in the member school during the next school year. Further, during the dead period school facilities are not utilized by enrolled students in connection with any sport or activity governed by MSHSAA. The dead period is a "no school activities time"; no open gyms, competitions, practices, conditioning, weight training; no activity-related functions or fundraisers, camps or clinics at school facilities or sponsored elsewhere by the school; no coaches/directors or students may have planned contact other than casual, normal community, non-activity contact. While there may be sports activities during this time, they must not involve the school coach, the school or school facilities.

The dead period shall be nine (9) consecutive days in length. It must begin on a Saturday and last through the second following Sunday.

Each school is responsible for setting a dead period for its athletic activities and one for its non-athletic activities. These dead periods may be concurrent or separate. The earliest possible dead period may be set no earlier than

the Saturday of Memorial Day Weekend or the Saturday following the school's last day of classes, whichever is later.

The latest possible dead period would end on the Sunday prior to the first allowable high school fall practice (Sunday of Standardized Calendar Week Number Five*). This last possible dead period closes at 5:00 p.m. on Sunday of Standardized Calendar Week Number Five*. This would allow for a Fall Sport/Activity Parent Meeting to take place after 5:00 p.m. if desired by the school on that Sunday.

Limits on Contact – High School Only

For High Schools (Grades 9-12) only, a limit of twenty-five (25) contact days are allowed per sport, per gender during the summer (as defined in By-Law 3.15.1.a). Sports contact, as defined above, between any coach for a particular sport and gender and any student enrolled at the member school or who will be enrolled in and attending the member school that fall will count as one day of contact toward the limit of 25 days for that sport. Summer contact days shall be documented and available upon request to other member schools and/or the MSHSAA office. By-Laws 3.13 (fall sports) and 3.14 (winter and spring sports) shall govern contact taking place after "summer" has concluded.

Limits on Contact – Junior High

The school will determine any restrictions on contact between their current or incoming students and their school coaches. However, Junior High Schools must adhere to any contact restrictions outlined in By-Law 3.15, with the exception of By-Law 3.15.3.

School Sponsored Summer Camps

(Football is explained in another article)

A member school or school district may sponsor its own summer sport(s) camp(s) (team and/or individual camp) during the summer provided the following criteria are met:

- Only students enrolled to enter the 7th grade (Junior High membership or 7-12 membership) or the 9th grade (9-12 membership) who will attend the school, and currently enrolled students in the sponsoring member school, may attend the school-sponsored camp.
- For a school-sponsored team camp, each school team participating in the camp shall be coached and supervised at all times by a member of that school's coaching staff.
- Late Release: Schools that release for summer following the defined start of summer may hold summer camps prior to school release for summer as long as students do not miss any instructional time. Further, these days shall be



counted as summer contact days as defined in this section. Football is included in this allowance as well.

- Non-School Sponsored Summer Activities & Events: No school owned personal player uniforms or equipment shall be used in summer activities that are not school-sponsored, other than as outlined in By-Law 3.15.6.b and By-Law 3.11.3. Member schools may not rent, sell, lease, or loan their uniforms or player equipment for use in non-school sponsored camps or clinics or contests, other than outlined in By-Law 3.15.6.b and By-Law 3.11.3.
- School-owned personal player uniforms and equipment may be used during the summer for school-sponsored summer activities at the school's discretion.

Editor's Note: One-on-one instruction: By-Law 3.13.6.d is in place 365 days a year.

A school may sponsor a youth-aged sports camp under the following conditions:

- During the Summer (Open): A high school may sponsor a youth-aged sports camp open to any students to attend up to and including the summer preceding entry into the 8th grade. A junior high school may sponsor a youth-aged sports camp open to any students to attend up to and including the summer preceding entry into the 6th grade.
- Student Assistants: High school students, including athletes, may assist with youth-aged sports camps that are sponsored by the high school in which they are enrolled. Junior high school students, including athletes, may assist with youth-aged sports camps that are sponsored by the junior high school in which they are enrolled. Sport-specific contact that takes place outside of the school sport season between a high school or junior high school athlete and his/her sport coach(es) as a result of assisting with a bona fide youth-aged sports camp shall not constitute a violation of the restrictions outlined in By-Laws 3.13, 3.14 or 3.15, nor shall count as a contact day.

Questions & Answers

The following are questions and answers pertaining to the MSHSAA Constitution and By-Laws and/or MSHSAA Board of Directors policy. These are provided as an aid in interpreting the rules and regulations which MSHSAA member schools have adopted. If you have a specific area and/or question which you would like explained, contact Dr. Kerwin Urhahn, MSHSAA executive director. Your attention is called to the fact questions and answers regarding interpretations of the MSHSAA Constitution and By-Laws appear following the Constitution Article or By-Law they relate to in the MSHSAA Official Handbook.

Question 1: Our school has applied and been approved to participate in a cooperative sponsorship in baseball. Our school board now wants to void the sponsorship and enter into a cooperative sponsorship with another school in baseball. May our school do this? **Answer:** No. By-Law 1.4.1 provides that two schools may mutually dissolve a cooperative sponsorship but such decision may not occur unilaterally. Further, if a school ends a cooperative sponsorship it may not enter into another cooperative sponsorship in that sport until the next two-year cycle. Therefore, your school cannot enter into an agreement with another school. (By-Law 1.4.1)

Question 2: School A, a Class 1 school, is bordered by a Class 5 school, a Class 2 school and a K-8 district. School A wants to co-op with the Class 1 school on the other side of the K-8 district which is not contiguous to School A due to the K-8 district. May this occur since there is a Class 2 district which is contiguous to School A? **Answer:** Yes, provided cooperatively sponsoring the program(s) with the contiguous class 2 school is not an option as all co-ops must be with mutual approval of both school districts. Your school or the class 2 school is not required to



It is permissible for a local school to give a student-athlete permission to miss swimming practice in order to compete in a non-school swim meet, per By-Law 235.1-c-1. This issue, along with cooperative programs and others are the focus of this issue's Q&A section.

try to co-op with each other. (By-Law 1.4.1)

Question 3: A small Class 1, Grades 7-12 member school, has a junior high basketball season with a team comprised of grades 7-9. Following the junior high season, the school wants to have a cooperative sponsorship agreement with a neighboring member school in girls basketball to include the ninth graders moving up to the cooperative sponsorship high school team after the junior high season is over. Would this be allowed under By-Law 1.4.1? **Answer:** Yes, provided the ninth graders do not exceed the 20-week participation limit, quarter and tournament limitations. (By-Law 1.4.1)

Question 4: One of our swimmers has approached our principal requesting to miss this upcoming Friday school swimming practice to travel to Oklahoma for a non-school swimming meet on Saturday. Our team has practice on Friday and does not compete until Tuesday. Would it be acceptable for our principal and coach to approve this request? **Answer:** Yes. This

is not a replacement of school practice and is considered as a case by case request as permitted in the by-law (3.13.2.a) to be addressed by the local school administration. This decision rests with the school

Question 5: In the posting of our open facility our softball coach stated "Any girl wanting to play softball may come to the open facility." Is this a proper posting? **Answer:** No. The "wanting to play softball" implies future team membership. It is acceptable to say "Open facility for softball play".



Appeals Committee Summary

Held November 19, 2013

Six cases were reviewed and decided on the basis of documentation presented by the Associate Executive Director to the Appeals Committee:

- a. Denied appeals to grant unrestricted eligibility to the following schools' students under provisions contained in MSHSAA By-Law 3.10.4.h, Hardship Transfer Applications and granted restricted eligibility under Transfer Waiver, By-Law 3.10.4.i:
 1. Winston HS
 2. Lafayette (St. Joseph) HS
 3. Lone Jack HS
- b. Granted unrestricted eligibility to the following school's students under provisions contained in MSHSAA By-Law 3.10.4.h, Hardship Application Transfer:
 1. Carrollton HS (Two Appeals)
- c. Denied appeal to grant eligibility under provisions of Article IV, Section 6-p, Hardship Provision of the MSHSAA Constitution:
 1. Hazelwood East HS

The Appeals Committee heard twelve cases and ruled as follows:

- a. Granted unrestricted eligibility to the following schools' students under provisions contained in MSHSAA By-Law 3.10.4.h, Hardship Application Transfer:
 1. Ft. Zumwalt South HS
 2. Parkway Central HS
 3. Steelville HS
 4. Glendale HS
 5. DeSmet HS
 6. St. Charles HS
 7. Cardinal Ritter HSI
- b. Denied appeals to grant unrestricted eligibility to the following schools' students under provisions contained in MSHSAA By-Law 3.10.4.h, Hardship Transfer Applications and granted restricted eligibility under Transfer Waiver, By-Law 3.10.4.i:
 1. O'Hara HS
 2. Ft. Zumwalt West HS

- c. Denied appeals to grant unrestricted eligibility under provisions contained in MSHSAA By-Law 3.10.4.h, Hardship Transfer Applications (no eligibility for 365 days as appeals deemed for athletic reasons):
 1. Salem HS
 2. Ft. Zumwalt West HS
(Two Student Appeals)

Public/Nonpublic Advisory Committee Summary

Held November 21, 2013

1. Recommended that a sub-committee of Zell, Bradley and Nesslage be formed to work on possible language to define the parameters for advertising for students in regard to activities.
2. Recommended that a schedule for face to face meetings regarding the issue of public and non-public schools and championships be set. The date of Tuesday, December 3, 2013 starting at 8:30am was finalized.

All items approved

Board of Directors Telephone Conference Call Meeting

Held October 25, 2013

A special meeting of the MSHSAA Board of Directors convened at 1:30 p.m. via teleconference at the MSHSAA Office in Columbia, Missouri on October 25, 2013.

Poplar Bluff High School is requesting a lesser penalty under MSHSAA By-Law 5.4.1. The high school girls' varsity volleyball team participated in 17 matches and 3 tournaments during the regular season which exceeds the season limitations in By-Law 3.28.6 of 16 matches and 3 tournaments.

Granted the request for lesser penalty and allow Poplar Bluff girls volleyball team to participate in the district tournament. The school will lose one match from their season for 2014-15 and the athletic director is required to attend the MIAAA spring conference.

Athletic Directors Advisory Committee Summary

Held September 16, 2012, at Tan-Tar-A

1. Recommended that the issue of allowing the Speech/Debate/Theatre travel exception to the Speech and Debate Advisory Committee for further review.
2. Recommended referring the topic of separate championships for private schools to the Public/Nonpublic Advisory Committee for review and recommendation(s).
3. Recommended that Band be included in the Heat Acclimatization procedures.

***4. Recommended referring requiring physicals for grades 7, 9, and 11 to the Sports Medicine Advisory Committee for review.
Amended - Recommended referring requiring physicals for grades 7, 9, and 11 or any individual who hasn't had a physical during those grade levels to the Sports Medicine Advisory Committee for review.

*5. Recommended that all sport advisory committees submit examples of permissible activities allowed in an Open Facility.

*6. Recommended that officials use local associations and the Arbiter to provide sportsmanship feedback on schools.

*7. Recommended allowing schools, who are concluding their summer dead period, to host their preseason meetings as early as 2:00 p.m. on the Sunday before the first day of fall practice.

**8. Recommended that schools be required to input their game scores within 24 hours of the contest starting with the 2014-15 school year.

9. Recommended checking into streamlining the MSHSAA website for updating coaches First Aid and CPR certifications.

* Denied

** Tabled for further study

*** Approved as amended
All others approved

Future Board of Directors & Appeals Meeting Dates

Board of Directors Meeting Dates

March 12-13, 2014 - MSHSAA office, Columbia (Wed.-Thu. of Week 36)

April 4-5, 2014 - Tan-Tar-A, Osage Beach (Fri.-Sat. of Week 39)

June 18, 2014 - MSHSAA office, Columbia (Wed. of Week 50)

(all meetings begin at 8:30 a.m., except the April 4 meeting which begins at 1 p.m.)

Appeals Committee Meeting Dates

March 18-19, 2014 - MSHSAA office, Columbia (Tue.-Wed. of Week 37)

(all meetings begin at 8:30 a.m.)

Anyone attending a meeting in the MSHSAA office who requires auxiliary aids or services should request such services by contacting the executive director of the MSHSAA, telephone (573) 875-4880, no later than 48 hours before the meeting. Hearings of student eligibility shall be closed as matters involving the eligibility status of students where personally identifiable private information from a student's educational record will be reviewed or discussed. Section 610.021(6 and/or 14) R.S.Mo.; 20 U.S.C. 1232g(b); 34 C.F.R. 99.1 et seq. All other portions of all meetings are open.

Upcoming Committee Meeting Dates

Swimming Advisory Committee
March 5, 2014

Wrestling Advisory Committee
March 10, 2014

Officials Advisory Committee
March 26, 2014

Basketball Advisory Committee
April 11, 2014

Speech Advisory Committee
May 6, 2014

Scholar Bowl Advisory Committee
May 19, 2014

Music Advisory Committee
May 28, 2014

Golf Advisory Committee
May 28, 2014

Track Advisory Committee
June 3, 2014

Baseball Advisory Committee
June 10, 2014

Media Advisory Committee
June 25, 2014

2014 Board of Directors Elections for Kansas City, South Central, and Southwest Districts

The annual MSHSAA Board of Directors election will be conducted in April in accord with provisions contained in Article IV, Sections 3 and 4 of the MSHSAA Constitution. Member schools from the Kansas City and South Central districts will elect Board members for four-year terms. The Southwest District will fill a one-year vacancy.

Primary (nomination) ballots will be e-mailed to member schools in the three districts on February 17 and must be received in the MSHSAA office no later than March 10. The names of the three

persons receiving the highest number of votes in the primary election in each district will appear on the final ballot unless there is a tie for the third highest position. In such cases, only the names of the persons receiving the two highest number of votes will be placed on the final ballot.

Final ballots will be on-line for all schools in the three districts on April 1 and must be submitted through the MSHSAA website no later than May 1. All ballots are sent to the attention of the school principal.

2014 Investigative Committee Elections

The investigative committee from each of the eight MSHSAA board districts shall consist of one public school administrator, one nonpublic school administrator, and one at-large school representative.

Each year, one of the members will rotate off the committee and a replacement shall be voted on by the membership. Only self-nominations for the appropriate category for replacement members can be accepted (public member will need to be replaced by a public school nominee, nonpublic member will need to be replaced by a nonpublic school nominee, and an at-large member can

be a nominee from either public or nonpublic schools). Each district's nomination ballot will list the specified membership category to be voted on for the respective district for the current year.

The self-nomination ballots will be e-mailed to the member school principals on February 17 and must be received in the MSHSAA office no later than March 10. The ballot listing the nominees received will be on the MSHSAA website for member schools' principals on April 8, with a due date of May 1. Please be certain to participate in these elections.

Annual Election to Amend MSHSAA Constitution and By-Laws

The 2014 MSHSAA annual election to amend the Constitution and By-Laws will again be held in April. The proposed amendments and background information will be distributed to member schools the last week in March. The Annual Ballot will be on-line the first week in April. All ballots are required to be finalized on-line by the school principal no later than May 1.

Parental Permission Statement Reminder for Spring Sports

MSHSAA By-Law 3.7 requires each student participating in interscholastic athletic competition to furnish a statement, signed by the student's parents or guardians, which grants permission for the student to participate in interscholastic athletics. As an aid to member schools in complying with this requirement, the MSHSAA includes a recommended parental permission statement on the MSHSAA physical examination form, available on the MSHSAA Web Site.

Included as a part of the recommended parental permission statement is a statement acknowledging that the parents consent for the student to accompany the team on trips. It further acknowledges that in case of a medical emergency where the parents cannot be reached, the school official with supervisory responsibility for the individual student or group of students on the trip is authorized to obtain emergency medical assistance through a physician or hospital of the supervisors choice which would be considered reasonably necessary for the welfare of the student.

While the parental permission form is required of all athletes, MSHSAA By-Laws do not require them for students participating in nonathletic activities or for students who serve

in a support capacity for an athletic team such as statistician, manager, etc. However, the MSHSAA has been advised of a medical emergency that arose involving a student who was accompanying an athletic team to videotape games. Unfortunately, the school in question did not have a parental consent form signed for the student which authorized the school supervisor to obtain emergency medical care. Luckily, the school was able to contact the parents and obtain this permission by telephone after a significant delay.

Because of this experience, it is strongly recommended that school administrators require that signed parental permission statements be on file for all students who travel as a part of an official school party to participate in any type of interschool activity. This will authorize school representatives to seek medical help in emergency situations. These signed statements should accompany the school supervisor on every school trip. It may be of further assistance to have these forms notarized.

MSHSAA Board of Directors Policy Regarding Specialized Sport Camp Fees

Provisions contained in MSHSAA By-Laws 3.13.6.b and 3.15.5.e stipulate that fees (tuition) for summer athletic camps shall be provided by the student or the student's parents precludes a school from being involved in any group projects to raise money to pay these fees. This restriction applies to a booster club as well as to school coaches. As far as the restriction on athletes is concerned, it would be permissible for several members of a school team to assemble themselves for the purpose of collectively undertaking work projects such as a car wash, a bake sale or other similar type of activities to earn money which could be applied toward camp fees. Under such circumstances all money earned shall go directly to the student to be used at his or her discretion. If the students assemble themselves collectively there can be no requirement that the money earned must go toward the payment of camp fees. Students cannot be assembled through coordination of the school, booster club, or coach nor can they identify themselves as the school athletic team with the purpose of raising money to attend a sport camp.

Coaches & Activities Directors Influence MSHSAA Program

The MSHSAA has advisory committees, appointed by the Board of Directors, for each sport and activity in which district and state events are sponsored. Each committee makes recommendations to the Board regarding matters relating to the sport or activity concerned. Some of these are in the form of regulations for the administration of district and state events which become effective when approved by the Board of Directors. Others involve proposals to amend the Constitution and By-Laws which must be put to a vote of the schools when accepted by the Board. The record shows that approximately 80-percent of the recommendations of these committees are approved by the Board and have resulted in significant changes in the MSHSAA program.

This is the Board of Director's procedure

for allowing coaches and those involved at the grass roots level to make contributions. The only concern of the Board is that the recommended changes are acceptable to school administrators and do not adversely affect other activities.

The names of advisory committee members are contained in the manuals published for the sport or activity concerned. Coaches, music directors, and speech directors who desire to have changes considered should contact the person on the particular advisory committee from his or her district. Some advisory committee members hold meetings in their areas at the time of district events to get a consensus from their colleagues. This procedure is encouraged to involve as many persons as possible.

Frequently, suggestions from advisory committees are first placed on the Annual MSHSAA Questionnaire sent to member schools in February each year to get a consensus from the schools to determine whether a proposal is satisfactory. In addition to providing the Board of Directors with information regarding the position of school administrators on the matter, it provides an opportunity for each school to give consideration to proposed changes. School administrators are urged to meet with members of their staffs concerned. This course helps provide programs that are acceptable to the majority of persons who are interested in the educational welfare of our youth.

MSHSA BOARD OF DIRECTORS AND ADVISORY COMMITTEES

DISTRICT - Election Year -	NORTHWEST 2016	NORTHEAST 2016	KANSAS CITY 2014	CENTRAL 2017	ST. LOUIS 2017	SOUTH CENTRAL 2014	SOUTHWEST 2015	SOUTHEAST 2015
BOARD OF DIRECTORS	KEN EATON Mound City	PAUL SULSER North Shelby	PAUL KINDER Blue Springs School Dist. Region 1 - TRAVIS BROWN, St. Louis Public Schools (2015); Region 2 - TONI HILL, Portageville (2017)	MARK BEEM Skyline Schools	DON MAURER MICDS	JENNIFER SCHMIDT Sullivan	MARK FISHER Springfield Schools	BLANE KEEL Viburnum
APPEALS COMMITTEE**	Troy Ford Penny	Jason Smith Troy	Brad Kincheloe Park Hill	Kevin Shearer Cole Camp	Dory Smith Villa Duchesne	Chris Arand Union	Russ Cruzan Mount Vernon	Mitch Wood Oran
ATHLETIC DIRECTORS**	Mike Ziesel Benton	Mike McBroom Brookfield	Bob Glasgow Raytown School District	Keith Chapman Warrensburg	Scott Harris Francis Howell Central	Josh Scott Waynesville	Todd Schrader Bolivar	Pat Burns Farmington
BASEBALL	*Jason Boldt Plattsburg	Andy Jackson Kirksville	Marc Hines Blue Springs	Josh Fisher Santa Fe	Pete Jans MICDS	*Ryan Bailey Union	Mike Essick Ozark	vacancy
BASKETBALL Boys	Tim Cool Chillicothe	Bob Roberts Northeast (Cairo)	Jimmy Cain Blue Springs South	*Chris Nimmo Warrensburg	Mike Storm Francis Howell	John Vanleer Pacific	Skip Brock Mt. Vernon	Jim Vaughan Kennett
Girls	Tyler Pedersen Jefferson (Conception Jct.)	Brad Blakemore Hallsville	*Steve Cassidy Truman	Jim Newland Leeton	*Brad Suttler Kirkwood	Sheila Heckemeyer St. Elizabeth	*Keri Nichols Parkview	*Kelly Null Twin Rivers
CONSTITUTION STUDY COMMITTEE **								
CROSS COUNTRY	Chris Gebhards Rock Port	Matt Chance Bowling Green	Ryan Unruh Blue Springs South	Mark Sabala Hermitage	Joe Porter St. Louis University	Matt Candri Owensville	Darbi Stancell McDonald County	vacancy
FOOTBALL 11-man	Kevin Bryan East Buchanan	*Pete Claas Macon	Kelly Donohoe Blue Springs	Brandon Shelby Skyline	*Paul Day Vianney	*Cody McDowell St. Clair	Scott Bailey Lamar	Charlie Vickery Chaffee
GOLF Boys	Jason Lenz Mound City	Jason Hannam Moberly	Becky Costello Truman	Danny Dick Tipton	*Greg Gibson St. Charles	vacancy	Brian Leonard Nevada	Jerry Grim Notre Dame (Cape Girardeau)
Girls	Sheryl Harns Maysville	Seth Woods Centralia	Richard Myers Lee's Summit West	*B.J. Curry Smith-Cotton	Todd Pannett Parkway Central	N/A	Teresa Holt Bolivar	N/A
LIAISON**								
MEDIA	Chris Ward KKWK/KMRN Radio Cameron	Brad Boyer KRES Moberly	*Tim Crone The Examiner Oak Grove	Tom Collins Eldon Advertiser Eldon	Jim Powers KTRS St. Louis	Craig Vonder Haar Washington Missouriian Washington	*Mike Scott KSPR Springfield	Rachel Crader Southeast Missouriian Cape Girardeau
MIDDLE LEVEL	David Elms East Buchanan M.S.	*Jason Church Clark County M.S.	Dallas Truex Brittany Hill M.S.	Eric Findley Warsaw	J.D. Perona Westminster Christian Academy	Bill Deckleman Washington Jr. HS	Danny DeWitt Diamond M.S.	Scott Kruse T.S. Hill M.S. (Dexter)
MUSIC	*Michele Kelley Starberry	Brad Hudson Kirksville	*Kirt Mosler Lee's Summit West	Scott Harvey Odessa	Joe Gutowski Lafayette (Wildwood)	Amanda Fall Camdenton	*Rene Spencer Mt. Vernon	Chris Auchly Festus
OFFICIALS	Corey Gilpin St. Joseph	Brent Rich Emden	Bill Sobbe Kansas City	Rick Schmidt Warrensburg	Larry Donovan High Ridge	Mike Wood Washington	Royce Sutton Willard	Randy Winston Poplar Bluff
PUBLIC/ NONPUBLIC	*John Rinehart Albany	Mike Nagel Westran	Marty Jacobs Liberty North	Martin Hammond Lincoln	Corey Nesslage Kirkwood	*Andy Herbst Pacific	Steve Garner Pierce City	*Chad Bradley Central (Park Hills)

SCHOLAR BOWL	David Reiter Mound City	John Reardon Clark County	Shawn Logan Smithville	Shelley Swoyer Hellas Catholic	Frank Corley St. Louis University	Roger Stephens Richland	*Nate Kinast Thomas Jefferson Independent	Al Nicolai Central (Cape Girardeau)
SOCCER <i>Boys</i>	Stuart Collins Maryville	*Eric Hill Hannibal	Joe Toigo Park Hill South	Roy Poynter Stover	Chris Steinmetz Kirkwood	Mike Armstrong Waynesville	*Tom Davidson Ozark	vacancy
<i>Girls</i>	Jeff O'Neal Savannah	*Chad Baldwin Troy Buchanan	Todd Findley Blue Springs South	Dan Coleman Harrisonville	Bill Taylor Rosati-Kain	Matt Fennessey Union	vacancy	vacancy
SOFTBALL	Brandon Craig North Harrison	Brian Wosman Palmyra	*Tracy Bertoincin Lee's Summit	Sharon Buschjost Blair Oaks	Rich Sturm Oakville	*Stan Westhoff St. Francis Borgia	*Cheratin Hunter Strafford	Shannon England Cleanwater
SPEECH/DEBATE/THEATER	Katy Schwartz Central (St. Joseph)	*Staci Johnson Hallsville	*Kenny Yunker Grandview	Jamie Yung Lexington	Molly Beck Ladue Horton Watkins	Ed Kappeler Pacific	Marilyn Mann Monett	*Kim Zustiak Seckman
SPIRIT <i>Cheer/leading</i>	Renae Wattenbarger Penney	Kara Hamlin Scotland County	*Sara Mumaw Blue Springs South	Pam Mifflin Clinton	Kim Daus Visitation Academy	Kerry Dilks St. Clair	*Jennifer Clark Ozark	Traci Wilson Malden
<i>Dance</i>	April Lawyer Maryville	*Teri Swift Brookfield	*Heather Oldham Kearney	Susan Cantrell Fair Play	Brooke Austin Francis Howell	*Tori Snitker St. James	Amy Lansdown Ava	Courtney Stenzhorn Herculaneum
SPORTS MEDICINE**	Paul Snow Trainer Maryville H.S.	Bus Tarbox M.D. Columbia	Greg Canty M.D. Kansas City	David Glover M.D. Warrensburg	John Yetter, M.D., Bridgeport; Mark Halstead, M.D., Washington Univ.	Kim D. Collier M.D. Washington	Gary West, Trainer, Missouri State Univ. Jim Raynor, Trainer, Springfield	Tom Weber Trainer Cape Girardeau
SPORTSMANSHIP/ CITIZENSHIP	Doug Miller North Andrew	Mark Penny Troy Buchanan	Eric Holm Truman	Brent Cooper Concordia	Brian Kessler Parkway West	*Bill Deckelman Washington	Becky Justis Ozark	Paul D'Amico Cleanwater
STUDENT**	vacancy	vacancy	vacancy	vacancy	vacancy	vacancy	vacancy	vacancy
SWIMMING <i>Boys & Girls</i>	N/A	*Brenda Gieseke Hannibal	Erich Oberlander Blue Springs South	*Jerry Tankersley Smith-Colton	Tim Lombardo (SWB) Lindbergh Leslie Kehr (SWG) John Burroughs	N/A	*Shawn Klosterman Webb City	Dayna Powell Central (Cape Girardeau)
TENNIS <i>Boys</i>	Traci Westfall Savannah	Louis Schoebelen Fulton	Art Smith Liberty North	Jim Stoner Lafayette County	Patrick Huewe MICDS	Cody Kennedy Rolla	*Chris Kohl Kickapoo	Andrew Canter Farmington
<i>Girls</i>	Nicole McGinness Maryville	Ben Loeb Rock Bridge	Dale Eshelbrenner Pembroke Hill	Allan Twilligear Odessa	Susie Luten Clayton	*Kirk Richey Camdenton	*Bob Cooper Glendale	Linda Adams Jackson
TRACK <i>Boys</i>	*Shane Hilton Starberry	Geoff Hutton Kirksville	Todd Warner Staley	Quenton Bainbridge Wellington-Napoleon	Scott DeNoyer Lutheran South	Alyssa Frye Sullivan	Jeremy Goddard Kickapoo	Brett Blackman Charleston
<i>Girls</i>	Mike Long Richmond	*Mark Thomas Troy Buchanan	Mike Spiegel Lee's Summit	Dan Ridgeway Jefferson City	Chris Moore Rockwood Summit	Matt Candri Owensville	Andy Youngworth Carthage	Larry Clear Saxony Lutheran
VOLLEYBALL	Jayne Wood Tarkio	*Rachel Leu Mexico	Katie Grusing Blue Springs	George Creason Pleasant Hill	Zach Young Lafayette (Wildwood)	*Janel Brown Pacific	Stephanie Bates Glendale	*Betsy Middleton Lesterville
WRESTLING	Phillip Limb Cameron	Derek Greening Hannibal	*Jesse Whitsom Grain Valley	Billy Daleske Warsaw	James Lake Parkway South	*Marty Hauck St. James	Jeff Sill Seneca	*John Brown DeSolo

*. Appointed during Board term (may be reappointed for 4 year term); **. Not on Board rotation schedule; NOTE: Each advisory committee member's term terminates the year that district's Board member's term is up for election. (Exception - appointed in mid term - may be reappointed for a full four year term)

OFFICIAL SCHOOL ENROLLMENTS FOR 2014-15/2015-16

Official School Name	Town	Enrollment	
		Total	Adjusted Total
Adrian	Adrian	221	221
Advance	Advance	107	107
Afton	St. Louis	786	786
African Centered College Preparatory Acadmy	Kansas City	310	310
Albany	Albany	135	135
Alta Vista Charter	Kansas City	277	374
Alton	Alton	224	224
Appleton City	Appleton City	105	105
Arcadia Valley	Ironton	354	354
Archie	Archie	188	188
Ash Grove	Ash Grove	255	255
Atlanta	Atlanta	55	55
Aurora	Aurora	592	592
Ava	Ava	425	425
Bakersfield	Bakersfield	134	134
Ballard	Butler	38	38
Barat Academy	Chesterfield	158	214
Barstow	Kansas City	232	314
Battle	Columbia	1440	1440
Bayless	St. Louis	507	507
Bell City	Bell City	59	59
Belle	Belle	228	228
Belton	Belton	1362	1362
Benton	St. Joseph	827	827
Bernie	Bernie	160	160
Bevier	Bevier	75	75
Billings	Billings	128	128
Bishop DuBourg	St. Louis	434	586
Bishop LeBlond	St. Joseph	210	284
Bismarck	Bismarck	129	129
Blair Oaks	Jefferson City	432	432
Bloomfield	Bloomfield	206	206
Blue Eye	Blue Eye	205	205
Blue Springs	Blue Springs	2409	2409
Blue Springs South	Blue Springs	2124	2124
Bolivar	Bolivar	813	813
Boonville	Boonville	513	513
Bosworth	Bosworth	26	26
Bourbon	Bourbon	276	276
Bowling Green	Bowling Green	362	362
Bradleyville	Bradleyville	111	111
Branson	Branson	1388	1388
Brashear	Brashear	65	65
Braymer	Braymer	83	83
Breckenridge	Breckenridge	20	20
Brentwood	Brentwood	235	235
Bronaugh	Bronaugh	57	57
Brookfield	Brookfield	321	321
Brunswick	Brunswick	84	84
Bucklin	Bucklin	40	40

Official School Name	Town	Enrollment	
		Total	Adjusted Total
Buffalo	Buffalo	479	479
Bunceton	Bunceton	50	50
Bunker	Bunker	61	61
Butler	Butler	255	255
Cabool	Cabool	214	214
Cainsville	Cainsville	31	31
Calhoun	Calhoun	50	50
California	California	426	426
Calvary Lutheran	Jefferson City	97	131
Camdenton	Camdenton	1299	1299
Cameron	Cameron	530	530
Campbell	Campbell	192	192
Canton	Canton	162	162
Cardinal Ritter	St. Louis	265	358
Carl Junction	Carl Junction	962	962
Carnahan	St. Louis	374	374
Carrollton	Carrollton	294	294
Carthage	Carthage	1238	1238
Caruthersville	Caruthersville	317	317
Cassville	Cassville	570	570
Center	Kansas City	689	689
Central (Cape Girardeau)	Cape Girardeau	1151	1151
Central (New Madrid County)	New Madrid	425	425
Central (Park Hills)	Park Hills	527	527
Central (Springfield)	Springfield	1666	1666
Central (St. Joseph)	St. Joseph	1672	1672
Central Academy of Excellence	Kansas City	449	449
Central Visual & Perf. Arts	St. Louis	402	402
Centralia	Centralia	435	435
Chadwick	Chadwick	50	50
Chaffee	Chaffee	188	188
Chaminade	Creve Coeur	515	1391
Chamois	Chamois	55	55
Charleston	Charleston	269	269
Chilhowee	Chilhowee	37	37
Chillicothe	Chillicothe	557	557
Christian	O'Fallon	361	488
Christian Brothers College	St. Louis	957	2584
Clark County	Kahoka	326	326
Clarkton	Clarkton	93	93
Clayton	Clayton	871	871
Clearwater	Piedmont	302	302
Cleveland NJROTC	St. Louis	299	299
Clever	Clever	321	321
Climax Springs	Climax Springs	76	76
Clinton	Clinton	577	577
Clopton	Clarksville	163	163
Cole Camp	Cole Camp	251	251
College Heights Christian	Joplin	168	227
Columbia Independent	Columbia	39	53

OFFICIAL SCHOOL ENROLLMENTS FOR 2014-15/2015-16

Official School Name	Town	Enrollment	
		Total	Adjusted Total
Community	Laddonia	101	101
Concordia	Concordia	147	147
Confluence Prep Academy Charter	St. Louis	475	642
Construction Careers Charter	St. Louis	212	287
Conway	Conway	291	291
Cooter	Cooter	132	132
Cor Jesu Academy	St. Louis	588	1588
Couch	Myrtle	104	104
Craig	Craig	19	19
Crane	Crane	216	216
Crest Ridge	Centerview	202	202
Cristo Rey	Kansas City	378	511
Crocker	Crocker	150	150
Crossroads College Preparatory	St. Louis	146	198
Crystal City	Crystal City	178	178
Cuba	Cuba	404	404
Dadeville	Dadeville	54	54
DeKalb	DeKalb	100	100
Delta	Delta	90	90
Delta (Deering)	Deering	78	78
DeSmet	St. Louis	797	2152
DeSoto	DeSoto	946	946
Dexter	Dexter	604	604
Diamond	Diamond	270	270
Dixon	Dixon	312	312
Doniphan	Doniphan	473	473
Dora	Dora	128	128
Drexel	Drexel	104	104
Duchesne	St. Charles	390	527
East (Kansas City)	Kansas City	672	672
East Buchanan	Gower	244	244
East Carter	Ellsinore	222	222
East Newton	Granby	475	475
East Prairie	East Prairie	318	318
El Dorado Springs	El Dorado Springs	374	374
Eldon	Eldon	571	571
Ellington	Ellington	136	136
Elsberry	Elsberry	232	232
Eminence	Eminence	94	94
Eugene	Eugene	241	241
Eureka	Eureka	1922	1922
Everton	Everton	50	50
Excelsior Springs	Excelsior Springs	806	806
Exeter	Exeter	118	118
Fair Grove	Fair Grove	376	376
Fair Play	Fair Play	118	118
Fairfax	Fairfax	40	40
Farmington	Farmington	1165	1165
Father Tolton Regional Catholic	Columbia	177	239
Fatima	Westphalia	392	392

Official School Name	Town	Enrollment	
		Total	Adjusted Total
Fayette	Fayette	185	185
Festus	Festus	888	888
Fordland	Fordland	172	172
Forsyth	Forsyth	409	409
Fort Osage	Independence	1493	1493
Fox	Arnold	1785	1785
Francis Howell	St. Charles	1994	1994
Francis Howell Central	St. Charles	1901	1901
Francis Howell North	St. Charles	1877	1877
Frederick Douglass	Columbia	146	146
Fredericktown	Fredericktown	563	563
Frontier School of Innovation Charter	Kansas City	125	169
Ft. Zumwalt East	St. Peters	1270	1270
Ft. Zumwalt North	O'Fallon	1409	1409
Ft. Zumwalt South	St. Peters	1387	1387
Ft. Zumwalt West	O'Fallon	2037	2037
Fulton	Fulton	622	622
Gainesville	Gainesville	208	208
Galena	Galena	155	155
Gallatin	Gallatin	192	192
Gateway	St. Louis	1158	1158
Gideon	Gideon	91	91
Gilman City	Gilman City	33	33
Glasgow	Glasgow	102	102
Glendale	Springfield	1236	1236
Gloria Deo Academy	Springfield	31	42
Golden City	Golden City	77	77
Grain Valley	Grain Valley	1021	1021
Grand Center Arts Academy Charter	St. Louis	458	619
Grandview	Grandview	1154	1154
Grandview (Hillsboro)	Hillsboro	331	331
Green City	Green City	81	81
Green Ridge	Green Ridge	109	109
Greenfield	Greenfield	122	122
Greenville	Greenville	202	202
Greenwood	Springfield	136	184
Grundy County	Galt	61	61
Hale	Hale	43	43
Halfway	Halfway	78	78
Hallsville	Hallsville	381	381
Hancock	St. Louis	414	414
Hannibal	Hannibal	1047	1047
Hardin-Central	Hardin	81	81
Harrisburg	Harrisburg	166	166
Harrisonville	Harrisonville	924	924
Hartville	Hartville	218	218
Hayti	Hayti	253	253
Hazelwood Central	Florissant	1986	1986
Hazelwood East	St. Louis	1390	1390
Hazelwood West	Hazelwood	2164	2164

OFFICIAL SCHOOL ENROLLMENTS FOR 2014-15/2015-16

Official School Name	Town	Enrollment	
		Total	Adjusted Total
Helias Catholic	Jefferson City	694	937
Herculaneum	Herculaneum	401	401
Hermann	Hermann	345	345
Hermitage	Hermitage	97	97
Hickman	Columbia	1814	1814
Higbee	Higbee	76	76
Highland	Ewing	346	346
Hillcrest	Springfield	1023	1023
Hillsboro	Hillsboro	1150	1150
Hiram Neuwoehner	Town & Country	154	154
Hogan Prep Academy Charter	Kansas City	381	515
Holcomb	Holcomb	167	167
Holden	Holden	402	402
Hollister	Hollister	483	483
Holt	Wentzville	1729	1729
Houston	Houston	385	385
Humansville	Humansville	97	97
Hume	Hume	48	48
Hurley	Hurley	68	68
Iberia	Iberia	220	220
Incarnate Word Academy	St. Louis	353	954
Jackson	Jackson	1470	1470
Jamestown	Jamestown	71	71
Jasper	Jasper	150	150
Jefferson (Conception Junction)	Conception Jct.	50	50
Jefferson (Festus)	Festus	305	305
Jefferson City	Jefferson City	2575	2575
Jennings	Jennings	688	688
John Burroughs	Ladue	409	553
John F. Kennedy	Manchester	334	451
Joplin	Joplin	2111	2111
Kearney	Kearney	1205	1205
Kelly	Benton	306	306
Kennett	Kennett	559	559
Keytesville	Keytesville	42	42
Kickapoo	Springfield	1790	1790
King City	King City	91	91
Kingston	Cadet	197	197
Kingsville	Kingsville	79	79
Kirksville	Kirksville	765	765
Kirkwood	Kirkwood	1824	1824
Knob Noster	Knob Noster	336	336
Knox County	Edina	173	173
Koshkonong	Koshkonong	113	113
La Plata	La Plata	96	96
Ladue Horton Watkins	St. Louis	1281	1281
Lafayette (St. Joseph)	St. Joseph	833	833
Lafayette (Wildwood)	Wildwood	1964	1964
Lafayette County	Higginsville	283	283
Lakeland	Deepwater	118	118

Official School Name	Town	Enrollment	
		Total	Adjusted Total
Lamar	Lamar	404	404
LaMonte	LaMonte	104	104
Laquey	Laquey	209	209
Lathrop	Lathrop	264	264
Lawson	Lawson	408	408
Lebanon	Lebanon	1428	1428
Lee's Summit	Lee's Summit	1856	1856
Lee's Summit North	Lee's Summit	1911	1911
Lee's Summit West	Lee's Summit	1875	1875
Leeton	Leeton	107	107
Leopold	Leopold	50	50
Lesterville	Lesterville	108	108
Lexington	Lexington	245	245
Liberal	Liberal	151	151
Liberty	Liberty	1785	1785
Liberty (Mountain View)	Mountain View	353	353
Liberty (Wentzville)	Lake St. Louis	837	837
Liberty North	Liberty	1438	1438
Licking	Licking	271	271
Lift for Life Academy Charter	St. Louis	326	441
Lincoln	Lincoln	143	143
Lincoln College Prep	Kansas City	588	588
Lindbergh	St. Louis	1988	1988
Linn	Linn	212	212
Linn County	Purdin	79	79
Lockwood	Lockwood	127	127
Logan-Rogersville	Rogersville	697	697
Lone Jack	Lone Jack	194	194
Louisiana	Louisiana	206	206
Lutheran (Kansas City)	Kansas City	131	177
Lutheran (St. Peters)	St. Peters	310	419
Lutheran North	St. Louis	297	401
Lutheran South	St. Louis	518	700
Lutie	Theodosia	49	49
Macks Creek	Macks Creek	94	94
Macon	Macon	455	455
Macon County	New Cambria	38	38
Madison	Madison	79	79
Malden	Malden	271	271
Malta Bend	Malta Bend	28	28
Mansfield	Mansfield	193	193
Maplewood-Richmond Heights	Maplewood	349	349
Marceline	Marceline	202	202
Marion C. Early	Morrisville	194	194
Marion County	Philadelphia	66	66
Marionville	Marionville	227	227
Mark Twain	Center	233	233
Marquand-Zion	Marquand	59	59
Marquette	Chesterfield	2259	2259
Marshall	Marshall	791	791

OFFICIAL SCHOOL ENROLLMENTS FOR 2014-15/2015-16

Official School Name	Town	Enrollment	
		Total	Adjusted Total
Marshfield	Marshfield	909	909
Maryville	Maryville	474	474
Maysville	Maysville	182	182
McAuley Catholic	Joplin	109	148
McCluer	Florissant	1274	1274
McCluer North	Florissant	1790	1790
McCluer South-Berkeley	St. Louis	590	590
McDonald County	Anderson	1125	1125
McKinley Classical Leadership	St. Louis	189	189
Meadow Heights	Patton	148	148
Meadville	Meadville	88	88
Mehlville	St. Louis	1855	1855
Mercer	Mercer	67	67
Metro	St. Louis	335	335
Mexico	Mexico	686	686
Miami	Amoret	52	52
MICDS	St. Louis	626	846
Mid-Buchanan	Faucett	205	205
Midway	Cleveland	155	155
Milan	Milan	196	196
Miller	Miller	152	152
Miller Career Academy	St. Louis	710	710
MO Military Academy	Mexico	177	478
MO School for the Blind	St. Louis	29	29
MO School for the Deaf	Fulton	41	41
Moberly	Moberly	759	759
Monett	Monett	650	650
Monroe City	Monroe City	224	224
Montgomery County	Montgomery City	356	356
Montrose	Montrose	30	30
Mound City	Mound City	76	76
Mountain Grove	Mountain Grove	430	430
Mt. Vernon	Mt. Vernon	477	477
Naylor	Naylor	109	109
Neelyville	Neelyville	202	202
Neosho	Neosho	1326	1326
Neosho Christian	Neosho	21	29
Nerinx Hall	Webster Groves	593	1602
Nevada	Nevada	771	771
New Bloomfield	New Bloomfield	200	200
New Covenant Academy	Springfield	79	107
New Franklin	New Franklin	122	122
New Haven	New Haven	173	173
Newburg	Newburg	160	160
Newtown-Harris	Newtown	33	33
Niangua	Niangua	71	71
Nixa	Nixa	1734	1734
Nodaway-Holt	Graham	67	67
Norborne	Norborne	71	71
Normandy	St. Louis	588	588

Official School Name	Town	Enrollment	
		Total	Adjusted Total
North Andrew	Rosendale	116	116
North Callaway	Kingdom City	373	373
North County	Bonne Terre	917	917
North Daviess	Jameson	15	15
North Harrison	Eagleville	73	73
North Kansas City	North Kansas City	1505	1505
North Nodaway	Hopkins	66	66
North Pemiscot	Wardell	74	74
North Platte	Dearborn	202	202
North Shelby	Shelbyville	93	93
North Technical	Florissant	490	490
Northeast (Cairo)	Cairo	135	135
Northeast (Kansas City)	Kansas City	608	608
Northeast Nodaway	Ravenwood	45	45
Northeast Vernon County	Walker	63	63
Northview	Florissant	170	170
Northwest (Cedar Hill)	Cedar Hill	1984	1984
Northwest (Hughesville)	Hughesville	108	108
Northwestern	Mendon	52	52
Norwood	Norwood	142	142
Notre Dame (Cape Girardeau)	Cape Girardeau	574	775
Notre Dame (St. Louis)	St. Louis	229	619
Notre Dame de Sion	Kansas City	420	1134
Novinger	Novinger	92	92
Oak Grove	Oak Grove	649	649
Oak Park	Kansas City	1413	1413
Oak Ridge	Oak Ridge	102	102
Oakville	St. Louis	1712	1712
Odessa	Odessa	655	655
O'Hara	Kansas City	356	481
Oran	Oran	118	118
Orchard Farm	St. Charles	455	455
Orrick	Orrick	128	128
Osage	Kaiser	568	568
Osborn	Osborn	50	50
Osceola	Osceola	171	171
Otterville	Otterville	58	58
Owensville	Owensville	575	575
Ozark	Ozark	1546	1546
Pacific	Pacific	960	960
Palmyra	Palmyra	365	365
Paris	Paris	142	142
Park Hill	Kansas City	1736	1736
Park Hill South	Riverside	1564	1564
Parkview	Springfield	1414	1414
Parkway Central	Chesterfield	1316	1316
Parkway North	Creve Coeur	1406	1406
Parkway South	Ballwin	1715	1715
Parkway West	Ballwin	1239	1239
Paseo Academy	Kansas City	375	375

OFFICIAL SCHOOL ENROLLMENTS FOR 2014-15/2015-16

Official School Name	Town	Enrollment	
		Total	Adjusted Total
Pattonburg	Pattonburg	55	55
Pattonville	Maryland Heights	1785	1785
Pembroke Hill	Kansas City	394	532
Penney	Hamilton	225	225
Perryville	Perryville	722	722
Pierce City	Pierce City	214	214
Pilot Grove	Pilot Grove	99	99
Plato	Plato	207	207
Platte County	Platte City	1061	1061
Plattsburg	Plattsburg	232	232
Pleasant Hill	Pleasant Hill	693	693
Pleasant Hope	Pleasant Hope	241	241
Polo	Polo	127	127
Poplar Bluff	Poplar Bluff	1349	1349
Portageville	Portageville	241	241
Potosi	Potosi	685	685
Prairie Home	Prairie Home	56	56
Princeton	Princeton	128	128
Principia	St. Louis	247	334
Priory	St. Louis	298	805
Purdy	Purdy	194	194
Putnam County	Unionville	218	218
Puxico	Puxico	220	220
Raymore-Peculiar	Peculiar	1887	1887
Raytown	Raytown	1479	1479
Raytown South	Raytown	1153	1153
Reeds Spring	Reeds Spring	608	608
Republic	Republic	1280	1280
Rich Hill	Rich Hill	139	139
Richland	Richland	199	199
Richland (Essex)	Essex	71	71
Richmond	Richmond	484	484
Ridgeway	Ridgeway	26	26
Risco	Risco	63	63
Ritenour	St. Louis	1897	1897
Riverview Gardens	St. Louis	978	978
Rock Bridge	Columbia	1992	1992
Rock Port	Rock Port	105	105
Rockhurst	Kansas City	1096	2960
Rockwood Summit	Fenton	1324	1324
Rolla	Rolla	1274	1274
Roosevelt	St. Louis	776	776
Rosati-Kain	St. Louis	360	972
Ruskin	Kansas City	1566	1566
Russellville	Russellville	227	227
Sacred Heart	Sedalia	112	152
Salem	Salem	605	605
Salisbury	Salisbury	142	142
Santa Fe	Alma	120	120
Sarcoxie	Sarcoxie	223	223

Official School Name	Town	Enrollment	
		Total	Adjusted Total
Savannah	Savannah	724	724
Saxony Lutheran	Cape Girardeau	186	252
School of the Ozarks	Point Lookout	87	118
Schuyler County	Lancaster	186	186
Scotland County	Memphis	185	185
Scott City	Scott City	258	258
Scott County Central	Sikeston	120	120
Seckman	Imperial	1797	1797
Senath-Hornersville	Senath	236	236
Seneca	Seneca	460	460
Seymour	Seymour	215	215
Sheldon	Sheldon	54	54
Sherwood	Creighton	284	284
Sikeston	Sikeston	999	999
Silex	Silex	122	122
Skyline	Urbana	217	217
Slater	Slater	119	119
Smith-Cotton	Sedalia	1390	1390
Smithton	Smithton	178	178
Smithville	Smithville	815	815
Soldan International Studies	St. Louis	559	559
South Callaway	Mokane	279	279
South Harrison	Bethany	217	217
South Holt	Oregon	66	66
South Iron	Annapolis	100	100
South Nodaway	Barnard	60	60
South Pemiscot	Steele	207	207
South Shelby	Shelbina	227	227
Southern Boone	Ashland	480	480
Southland	Cardwell	98	98
Southview	Crestwood	108	108
Southwest (Livingston County)	Ludlow	64	64
Southwest (Washburn)	Washburn	230	230
Southwest Early College Campus	Kansas City	420	420
Sparta	Sparta	197	197
Spokane	Spokane	222	222
Springfield Catholic	Springfield	328	443
St. Charles	St. Charles	848	848
St. Charles West	St. Charles	736	736
St. Clair	St. Clair	755	755
St. Dominic	O'Fallon	694	937
St. Elizabeth	St. Elizabeth	69	69
St. Francis Borgia	Washington	542	732
St. James	St. James	493	493
St. Joseph Christian	St. Joseph	70	95
St. Joseph's Academy	St. Louis	555	1499
St. Louis Med/Bio Science	St. Louis	183	183
St. Louis University High	St. Louis	1095	2957
St. Mary's (St. Louis)	St. Louis	330	891
St. Paul Lutheran	Concordia	202	273

OFFICIAL SCHOOL ENROLLMENTS FOR 2014-15/2015-16

Official School Name	Town	Enrollment	
		Total	Adjusted Total
St. Pius X (Festus)	Festus	328	443
St. Pius X (Kansas City)	Kansas City	412	557
St. Teresa's Academy	Kansas City	602	1626
St. Vincent	Perryville	149	202
Staley	Kansas City	1443	1443
Stanberry	Stanberry	101	101
Ste. Genevieve	St. Genevieve	630	630
Steelville	Steelville	286	286
Stewartsville	Stewartsville	67	67
Stockton	Stockton	340	340
Stoutland	Stoutland	133	133
Stover	Stover	175	175
Strafford	Strafford	387	387
Sturgeon	Sturgeon	148	148
Sullivan	Sullivan	725	725
Summersville	Summersville	100	100
Summit Christian Academy	Lee's Summit	213	288
Sumner	St. Louis	579	579
Sweet Springs	Sweet Springs	127	127
Tarkio	Tarkio	94	94
Thayer	Thayer	170	170
The College Preparatory H.S. at Madison	St. Louis	375	375
The Fulton (St. Albans)	St. Albans	43	59
The Summit Preparatory	Springfield	17	23
Thomas Jefferson Indep.	Joplin	72	98
Timberland	Wentzville	1997	1997
Tina-Avalon	Tina	55	55
Tipton	Tipton	214	214
Transportation and Law	St. Louis	357	357
Trenton	Trenton	367	367
Tri-County	Jamesport	40	40
Trinity Catholic	St. Louis	286	387
Troy Buchanan	Troy	1970	1970
Truman	Independence	1630	1630
Tuscumbia	Tuscumbia	78	78
Twin Rivers	Broseley	302	302
Union	Union	931	931
Union Star	Union Star	44	44
University Academy Charter	Kansas City	204	276
University City	University City	826	826
Ursuline Academy	Kirkwood	501	1353
Valle Catholic	Ste. Genevieve	151	204
Valley (Caledonia)	Caledonia	120	120
Valley Park	Valley Park	284	284
Van Buren	Van Buren	149	149
Van Horn (Independence)	Independence	896	896
Van-Far	Vandalia	161	161
Vashon	St. Louis	864	864
Verona	Verona	114	114
Versailles	Versailles	452	452

Official School Name	Town	Enrollment	
		Total	Adjusted Total
Vianney	St. Louis	630	1701
Viburnum	Viburnum	128	128
Vienna	Vienna	197	197
Villa Duchesne	St. Louis	309	835
Visitation Academy	St. Louis	368	994
Walnut Grove	Walnut Grove	80	80
Warrensburg	Warrensburg	950	950
Warrenton	Warrenton	952	952
Warsaw	Warsaw	440	440
Washington	Washington	1407	1407
Waynesville	Waynesville	1622	1622
Weaubleau	Weaubleau	101	101
Webb City	Webb City	1176	1176
Webster Groves	Webster Groves	1328	1328
Wellington-Napoleon	Wellington	130	130
Wellsville	Wellsville	101	101
Wentworth Military Academy	Lexington	80	108
West County	Park Hills	275	275
West Nodaway	Burlington Jct.	76	76
West Plains	West Plains	1111	1111
West Platte	Weston	190	190
Westminster Christian Academy	Creve Coeur	723	977
Westran	Huntsville	210	210
Wheatland	Wheatland	80	80
Wheaton	Wheaton	121	121
Whitfield	St. Louis	270	365
Willard	Willard	1280	1280
William Chrisman	Independence	1461	1461
Willow Springs	Willow Springs	399	399
Windsor	Windsor	225	225
Windsor (Imperial)	Imperial	927	927
Winfield	Winfield	482	482
Winnetonka	Kansas City	1325	1325
Winona	Winona	141	141
Winston	Winston	54	54
Woodland	Marble Hill	260	260
Worth County	Grant City	98	98
Wright City	Wright City	423	423
Zalma	Zalma	76	76

continued on page 15

December Board of Directors Meeting Summary, con't from page 9

Technical, North Technical, North Technical, North Technical, North Technical, North Technical, North Technical, North Technical, Northeast (Kansas City), Northwest (Cedar Hill), Novinger, Oak Ridge, Oakland Middle (61 transfers), Oakville, O'Hara (20 transfers), Orrick, Osage, Osborn, Park Hill, Parkview, Parkway Central, Parkway North, Parkway North, Parkway West, Penney, Perryville, Perryville, Pilot Grove, Plato, Platte County, Platte County, Pleasant Hope, Potosi, Potosi, Princeton, Princeton, Purdy, Raytown, Raytown, Raytown South, Raytown South, Raytown South, Republic, Ritenour, Ritenour, Rock Bridge, Rock Bridge, Rockwood Summit, Rolla, Rolla, Rolla, Sacred Heart, Salem, Salem, Salem, Schuyler County, Seckman, Sikeston, Skyline, Skyline, Smith-Cotton, Smithton (Columbia), Smithton (Columbia), Smithton (Columbia), Smithton (Columbia), Smithton (Columbia), Smithton (Columbia), Smithton (Columbia), South Iron, Southwest (Livingston County), St. Charles, St. Charles, St. Charles, St. Charles West, St. Louis University, St. Mary's (St. Louis), St. Pius X (Kansas City), St. Pius X (Kansas City), St. Pius X (Kansas City), St. Pius X (Kansas City), Steelville, Steelville, Stockton, Sturgeon, Sturgeon, Summit Christian Academy, Summit Christian Academy, Summit Christian Academy, Timberland, Timberland, Timberland, Troy Buchanan, Troy Buchanan, Troy Buchanan, Troy Buchanan, Truman, Truman, Valley, Valley, Van Horn (Independence), Vashon, Vashon, Vashon, Vashon, Versailles, Villa Duchesne, Weaubleau, Weaubleau, Weaubleau, Webb City, Webb City, Webb City, Webb City, West Middle, West Middle, West Middle, West Middle, West Middle, West Middle, West Middle, West Middle, West Middle, West Middle, Wheaton, Willow Springs, Windsor, and Woodland.

Self-Reported Violations and/or Requests for Lesser Penalties (By-Law 5.4):

Recommend action by school be accepted with reprimand issued and administration acknowledged for self-reporting - Arcadia Valley - Self-reported a violation of By-Law 3.14 by allowing a boys tennis athlete to serve as a manager on the girls tennis team, upon detection of violation the student was removed as the manager, coaches counseled as to eligibility regulations to avoid a similar violation in the future, student's eligibility reinstated; Battle - Self-reported a violation of By-Laws 3.4 and 3.10.4 by omitting a student from the football eligibility roster, upon detection transfer information was filed and approved for the student, no forfeitures required, school putting procedures in place to avoid a violation of this nature in the future; Blue Springs - Self-reported a violation of By-Law 3.4.1 by allowing a student to participate in three softball contests who was not on the softball eligibility roster, school is forfeiting the contests, the softball coach is being suspended from two games and the school is putting procedures in place to avoid a similar violation in the future; Blue Springs

South - Self-reported a violation of By-Laws 3.10.4 and 3.4 by failing to file transfer information on a student in a timely fashion and omitting him from the eligibility roster, student's eligibility cleared and added to roster, no forfeitures required, school putting procedures in place to avoid a violation of this nature in the future; C.B.C. - Self-reported a violation of By-Law 3.4 by omitting an athlete from the swimming roster and the state entry roster, student on master student list and fully eligible, no forfeitures are required, student added to rosters and eligibility reinstated, school to put procedures in place to avoid a violation of this nature in the future; DeSoto - Self-reported a violation of By-Law 3.4 by omitting an athlete from the boys district soccer roster, the student was listed on the master soccer roster and fully eligible to compete, no forfeitures are required, the school is putting procedures in place to avoid a violation of this nature in the future; Hickman - Self-reported a violation of By-Laws 3.4 and 3.10.4 by omitting a student from the football roster who was fully eligible to represent the school, student added to roster upon detection of the violation, no forfeitures requires, school putting procedures in place to avoid a violation of this nature in the future; Hillsboro - Self-reported a violation of MSHSAA Board Policy #24 by allowing a student who was no longer attending the school to participate in a school open facility, upon detection student no longer attending and school putting procedures in place to avoid a violation of this nature in the future; Marshall - Self-reported a violation of By-Law 3.4.1 by allowing a student to participate in a contest before transfer information completed certifying her eligible, student to be withheld from one school contest after eligibility is confirmed, school putting procedures in place to avoid a similar violation in the future; Miller Career Academy - Self-reported a violation of By-Law 3.10.4 by allowing a student to participate in a softball contest who did not have the transfer information completed, student removed from the team, school completed transfer indicating student has JV status eligibility only, school to forfeit contest in which ineligible athlete participated; Montrose - Self-reported a violation of By-Law 6.1.2.a by using an official supplied by an area official's assigner who had not renewed his MSHSAA registration, the school informed the assigner of this official's status and has not contracted the individual for any more contests, no forfeitures required; Mountain Grove - Self-reported a violation of By-Law 3.4 by omitting names from the cross country roster due to a clerical error, students eligible for competition and were added to the roster, no forfeitures required, school putting procedures in place to avoid a violation of this nature in the future; Nodaway-Holt - Self-reported a violation of By-Law 3.25.1.b by a volleyball athlete who exceeded the set limit on a single playing date, school forfeiting contest in which the violation occurred, athlete being withheld from

one contest, coaches were instructed on contest regulations to avoid a violation of this nature in the future; Oakland M.S. - Self-reported a violation of By-Law 3.20.1 by allowing a male student to participate in and A and B girls volleyball contest, school forfeited contest won, steps put in place to inform students, parents and coaches of the rules to prevent a violation of this nature in the future; Parkway South - Self-reported a violation of By-Law 3.4 by omitting an exchange student from the soccer roster, student was fully eligible to participate in JV soccer, student added to roster, no forfeitures required; Priory - Self-reported a violation of By-Law 3.10.4 by allowing two foreign exchange students to participate in JV soccer before their transfer information was completed, students removed from team until transfers were complete and they were added to the roster, no forfeitures required; Puxico Jr. H. - Self-reported a violation of By-Law 3.10.4 by allowing a junior high school athlete to compete in basketball who was not listed on the eligibility roster, student's transfer was completed giving him full eligibility but he was not added to the roster in a timely fashion, no forfeitures required, school putting procedures in place to avoid a violation of this nature in the future; Raymore-Peculiar - Self-reported a violation of By-Law 3.14 by a new assistant baseball coach giving instruction to a student at the school, coach wasn't aware that he was under contract yet, coach informed this is a violation and the instruction was stopped, student's eligibility to be reinstated, no forfeitures are required; Salem Jr. High - Self-reported a violation of By-law 3.10.4 by allowing a junior high student to participate in a basketball contest before his transfer had been approved, upon detection of the violation the student was removed from the contest, student being withheld until transfer is completed granting his eligibility, no forfeiture required; School of the Ozarks - Self-reported a violation of By-Law 3.4 and 3.10.4 by allowing a transfer student to compete for the school before his transfer information was completed, transfer information completed confirming his eligibility, student's eligibility to be reinstated, no forfeitures required; Sikeston - Self-reported a violation of By-Law 3.14.2.e by the head soccer coach for the high school coaching a non-school soccer team of 7th and 8th graders during the high school season, coach had been instructed on the coaching regulations previously, school removed him as a school coach for both boys and girls soccer, athletes eligibility reinstated, no forfeitures required; South Iron - Self-reported a violation of By-Law 3.25 by allowing a volleyball athlete to exceed the playing limitations on a single playing date, school forfeited match in which the violation occurred, student being withheld from one contest as a result of the violation, school putting procedures in place to avoid a violation of this nature in the future; Southwest (Livingston County) - Self-reported a

continued on page 16

December Board of Directors Meeting Summary, con't from page 15

violation of By-Law 3.4.1 by omitting a student from the 2012-13 football roster, student fully eligible but was omitted due to a clerical error, no forfeitures required; Union - Self-reported a violation of By-Laws 2.3 and 3.4.1 by allowing an academically ineligible student to participate in three soccer matches before his ineligibility was discovered, student withdrawn from the team, school forfeited matches in which ineligible student participated, school putting procedures in place to avoid a violation of this nature in the future; Versailles - Self-reported a violation of By-Law 3.25 by allowing two athletes to exceed the playing limit on a single playing date, match in which the violation occurred to be forfeited, students to be withheld from one match and then have eligibility reinstated, coach counseled regarding rule to avoid a violation of this nature in the future; Wentzville (Holt and Timberland high schools) - Self-reported a violation of By-Laws 3.13 and 3.14 by the wrestling coaches of both high schools who had contact with little league wrestling teams who had 8th graders on the team as well as during the school season, upon detection coaches ceased involvement with the teams and are to have no further contact with them unless they have a child on the team, each coach will serve a period of suspension from the high school coaching responsibilities before being allowed to resume coaching, no forfeitures required, students to have eligibility reinstated.

Recommend action by school be accepted and administration acknowledged for self-reporting with no further action – Affton - Self-reported a violation of By-Law 3.4 by omitting an athlete from the boys soccer eligibility roster, the student was fully eligible to participate, upon detection the student was added to the roster, no forfeitures are required, school putting procedures in place to avoid a violation of this nature in the future; Bolivar - Self-reported a violation of By-Laws 3.6.2.b and 3.13.2 by a middle school athlete who participated in a non-school running event during the school season, student awarded a gift certificate, student to return the gift certificate and be withheld from one school meet before having her eligibility reinstated, no forfeitures required; Buffalo - Self-reported a violation of By-Law 3.10.4 by allowing a volleyball athlete to participate in the sport without the transfer information being completed for her, student enrolled in another school for one day and then returned to school attended since kindergarten, student to have eligibility reinstated once transfer information completed clearing her eligibility; Eureka - Self-reported a violation of By-Law 3.13.2 by a cross country athlete participating in a non-school running event during the school season, student being withheld from one school meet, school putting procedures in place to avoid a violation of this nature in the future; Iberia - Self-reported a violation of By-Law 2.2.2 by a softball athlete issued 40 hours of community service for a traffic violation involving an accident, student

did not report the violation and participated in 10 softball contests, upon detection by the school the athlete was suspended for 365 days from all MSHSAA sponsored activities from the date of detection of the violation, no forfeitures are required by the school; Nevada - Self-reported a violation of By-Law 3.4 by omitting a student from the football roster, student had completed preseason practice requirements and was fully eligible, upon detection to the student was added to the roster, no forfeitures required; North County - Self-reported a violation of By-Law 3.13.2 by two volleyball players participating in a non-school volleyball tournament during the school season, upon detection of the violation the athletes were withheld from three school games, no forfeitures required, students' eligibility reinstated after the three game suspensions; Villa Duchesne - Self-reported a violation of By-Law 3.13.2.a by a cross country athlete participating in a non-school running event during the school cross country season, student to be withheld from one school meet, no forfeitures required.

Application for approval of Senior High School Cooperative Sponsorships (By-Law 1.4.1) - host school listed first: Adrian and Archie high schools - Wrestling (2014-15 & 2015-16); Appleton City and Montrose high schools - 11-Man Football, Boys and Girls Track, and Girls Volleyball (2014-15 & 2014-16); Archie and Adrian high schools - Boys Golf (2014-15 & 2015-16); Bucklin and Macon County (New Cambria) high schools - Boys and Girls Basketball, Cheerleading, Music, and Boys and Girls Track (2014-15 & 2015-16); Chilhowee and Leeton high schools - 8-Man Football (2014-15 & 2015-16) Clopton and Elsberry high schools - 11-Man Football (2014-15 & 2015-16); DeSoto and Kingston high schools - 11-Man Football and Boys Soccer (2014-15 & 2015-16); Drexel and Miami high schools - 11-Man Football (2014-15 & 2015-16); Hermitage and Wheatland high schools - Boys Golf (2013-14); Jefferson (Conception Jct.) and South Nodaway - Boys Softball (2014-15 & 2015-16); John F. Kennedy and Valley Park high schools - 11-Man Football (2014-15 & 2015-16); King City and Union Star high schools - Cheerleading, 11-Man Football, Boys and Girls Golf, and Girls Softball - Fall (2014-15 & 2015-16); Liberal and Bronaugh high schools - 11-Man Football (2014-15 & 2015-16); Lockwood and Golden City high schools - 11-Man Football (2014-15 & 2015-16); Macon County (New Cambria) and Bucklin high schools - Baseball (Fall/Spring), Scholar Bowl, and Softball (Fall) (2014-15 & 2015-16); Mercer and Princeton high schools - Boys Softball (2014-15 & 2015-16); Montrose and Appleton City high schools - Baseball (Spring), Boys and Girls Cross Country, and Girls Softball - Fall/Spring (2014-15 & 2015-16); Mound City and Craig high schools - Boys and Girls Basketball, Cheerleading, Boys and Girls Cross Country, 8-Man Football, Boys and Girls Golf, Boy and Girls Track, and Girls Volleyball (2014-15 & 2015-16);

Neosho and Neosho Christian high schools - Boys and Girls Basketball, Boys and Girls Cross Country, 11-Man Football, Girls Softball and Wrestling (2014-15 & 2015-16); Pattonsburg, Gilman city and North Daviess high schools - 8-Man Football (2014-15 & 2015-16); Princeton and Mercer high schools - 11-Man Football (2014-15 & 2015-16); Rich Hill and Hume high schools - 11-Man Football (2014-15 & 2015-16); Ridgeway and Cainsville high schools - Boys and Girls Basketball, Cheerleading, Dance, Boys and Girls Golf, Scholar Bowl, Boys and Girls Softball - Fall, and Boys and Girls Track (2014-15 & 2015-16); Rock Bridge and Columbia Independent high schools - Wrestling (2014-15 & 2015-16); South Nodaway and Jefferson (Conception Jct.) high schools - 8-Man Football (2014-15 & 2015-16); Southwest (Livingston County), Breckenridge, and Hale high schools - 8-Man Football (2014-15 & 2015-16); Stewartsville and Osborn high schools - 8-Man Football and Girls Softball - Fall (2014-15 & 2015-16); Sweet Springs and Malta Bend high schools - 11-Man Football (2014-15 & 2015-16); Tarkio and Fairfax high schools - Spring Baseball (2013-14); Tarkio and Fairfax high schools - 8-Man Football (2014-15 & 2015-16); Van-Far and Community high schools - 11-Man Football (2014-15 & 2015-16); Worth County and Northeast Nodaway high schools - 8-Man Football (2014-15 & 2015-16).

Application for approval of Junior High School Cooperative Sponsorships (By-Law 1.4.2) - host school listed first: Bucklin and Macon County (New Cambria) junior highs - Music and Boys and Girls Track (204-15); King City and Union Star junior highs - Cheerleading, 11-Man Football and Girls Softball; Macon County (New Cambria) and Bucklin junior highs - Boys and Girls Basketball, Cheerleading and Scholar Bowl (2014-15); Mexico and St. Brendon junior highs - Girls Basketball (2013-14); Miller and Avilla junior highs - 11-Man Football (2014-15); Mound City and Nodaway Holt junior highs - 11-Man Football (2014-15); Ridgeway and Cainsville junior high - Boys and Girls Basketball, Cheerleading, Dance, Scholar Bowl, Boys and Girls Softball, and Boys and Girls Track (2014-15); St. Brendan and Missouri Military junior highs - Boys Basketball (2013-14); Sweet Springs and Malta Bend junior highs - 11-Man Football (2014-15); Tarkio and Fairfax junior highs - 8-Man Football (2014-15).

Richards reported to the Board from the special meeting of the Track Advisory Committee regarding the class break system with five classes for track and field. Breaking classes into 64 schools in Class 5, 96 in Classes 2 through 4 and making Class 1 the "catch all" class with 136 schools under the current number of schools registered for track and field. Richards also discussed the possibility of a 2-year trial event for the javelin. No action required.

Approved financial statements as presented.

Urhahn reported to the Board on the nine

continued on page 17

December Board of Directors Meeting Summary, con't from page 16

recommendations from the Athletic Directors Advisory Committee: 1) recommended that the issue of allowing the Speech/Debate/Theatre travel exception to the Speech and Debate Advisory Committee for further review; 2) recommended referring the topic of separate championships for private schools to the Public/Nonpublic Advisory Committee for review and recommendation(s); 3) recommended that Band be included in the Heat Acclimatization procedures; 4) recommended referring requiring physicals for grades 7, 9, and 11 to the Sports Medicine Advisory Committee for review. Recommendation was amended by staff to:- recommended referring requiring physicals for grades 7, 9, and 11 or any individual who hasn't had a physical during those grade levels to the Sports Medicine Advisory Committee for review; 5) recommended that all sport advisory committees submit examples of permissible activities allowed in an Open Facility; 6) recommended that officials use local associations and the Arbiter to provide sportsmanship feedback on schools; 7) recommended allowing schools, who are concluding their summer dead period, to host their preseason meetings as early as 2:00 p.m. on the Sunday before the first day of fall practice; 8) recommended that schools be required to input their game scores within 24 hours of the contest starting with the 2014-15 school year; 9) recommended checking into streamlining the MSHSAA website for updating coaches First Aid and CPR certifications.

Took the following action on the Athletic Directors Advisory Committee recommendations: Approve recommendations 1, 2, 3, 9 and 4 as amended; deny recommendations 5, 6, and 7; and to send recommendation 8 back to the advisory committee to develop more specifics on reporting.

Stahl reported to the Board regarding the six recommendations from the Tennis Advisory Committee: 1) recommended using 8 game pro set ad-scoring with regular tiebreaker in an 8-8 tie for doubles and 2 out of 3 no-ad scoring for singles in all postseason Team Tennis scoring. This scoring format will be used for the Team District, Team Sectional and Team State tournament; 2) recommended starting team dual matches in District, Sectional and State with doubles followed by singles; 3) recommended adding additional wording for clarification to Item B-2-b regarding substitutions at Team Sectional and Team State -- b). Call for a substitute, with the understanding that he/she (the injured, ill, or disciplined player) will not be able to return to play until the next team match. (If a substitution is made, the substitute will complete the team match in progress -- team district, sectionals or state.) (A player substituted for, using a direct substitution, in the Sectional or State semi-final may return to the line-up to play in the finals) NOTE 1: Substitution in B.2. above must be a direct replacement of the ill or injured player; 4) recommended additional wording to Section 3-J-4 the following: Every effort will be made to allow teams 90 minutes

between semi-final and final matches. (Amended by Board: 90 minutes will be provided between semifinal & final matches unless weather & extenuating circumstances determine otherwise.); 5) recommended that head coaches, after informing the opposing coach, issue a School to School report on a player from another school for code violations or a special report on an opposing coach for not enforcing code violations during a match the School to School report shall be filed using the MSHSAA website and would be received by the opposing school Athletic Director and Principal; 6) recommended that the Tennis Manual reemphasizes that any player ejected or removed from a match for unsportsmanlike/flagrant behavior will result in the player sitting out the next contest (dual/tournament) at the same level of which the ejection/removal occurred. By-law 5.1

Took the following action on the Tennis Advisory Committee recommendations: Approve recommendations 1, 2, 3, 5, 6 and recommendation 4 as amended.

Urhahn and Schroeder presented two recommendations from the Public/Nonpublic Advisory Committee: 1) recommended that a sub-committee of Zell, Bradley and Nesslage be formed to work on possible language to define the parameters for advertising for students in regard to activities; 2) recommended that a schedule for face to face meetings regarding the issue of public and nonpublic schools and championships be set. The date of Tuesday, December 3, 2013 starting at 8:30am was finalized.

Approved both recommendations of the Public/Nonpublic Advisory Committee.

Urhahn reported to the Board from a special meeting of the Public/Nonpublic Advisory Committee held on December 3, 2013. The committee would like to take have included in this year's Area Meeting discussion a proposal regarding non-resident teacher's children.

Accepted the recommendation of the Public/Nonpublic Advisory Committee and include as an Area Meeting topic the proposal that children of non-resident teachers count as resident students at both public and nonpublic schools.

Thompson reported to the Board on the six recommendations from the Softball Advisory Committee: 1) recommend MSHSAA survey spring softball schools regarding their preferred dates for the Spring Softball Championship Series; 2) recommend the following rule change be submitted to the NFHS: An intentional base on balls may be given by the defensive team by having its catcher or coach request the umpire to award the batter first base. This may be done before pitching to the batter or on any ball and strike count. The ball shall be declared dead before making the award; 3) recommend requiring the pitching distance at all junior high school softball games to be 43 feet; 4) recommend submitting an editorial change to the NFHS

clarifying the penalty in Softball Rule 3.6.7. Team personnel shall not intentionally remove any lines of the batter's box or on the field of play. PENALTY: (Art. 17) A strike shall be called on the batter if a member of the offense intentionally removes the line and a ball awarded to the batter if a member of the defense intentionally erases a line. A team warning shall be issued, with the next offense resulting in a strike/ball, the offender and the head coach being restricted to the dugout. Editorial Change in the Penalty: PENALTY: (Art. 17) A strike shall be called on the batter if a member of the offense intentionally removes the line and a ball awarded to the batter if a member of the defense intentionally erases a line. In addition a team warning shall be issued. with The next offense resulting results in a strike/ball, and the offender and the head coach being restricted to the dugout; 5) recommend Softball Preseason Interschool Scrimmages be scheduled between Friday of Week 6 and Thursday of Week 7 for fall season and Friday of Week 36 and Thursday of Week 37 for the spring season; 6) recommend to continue to present 20 medals at the State Championships during the awards ceremony. For teams with more than 20 players and coaches, the appropriate medal will be presented with the back of the medal being blank. They will take the medal home and schools will be billed for the additional medals.

Approved the six recommendations from the Softball Advisory Committee. Motion passed 9-0.

Davis reported from the Spirit Advisory Committee. The committee made no recommendations to the Board.

West presented three recommendations from the Sportsmanship/Citizenship Advisory Committee: 1) recommend the following topic for the 2013-14 Junior High Sportsmanship Essay Contest "How do spectators exhibit or model good sportsmanship at school events?"; 2) recommend the date of August 9, 2014 for the 2014 Sportsmanship Summit; 3) recommend to add language to the Area Meeting topics and the Annual Questionnaire publications as to why some of the MSHSAA member school do attend the annual Sportsmanship Summit.

Approved the three recommendations from the Sportsmanship/Citizenship Advisory Committee.

Davis presented six recommendations to the Board from the Volleyball Advisory Committee: 1) recommend amending MSHSAA By-Law 3.25.1d to state that a player may participate in a maximum of 4 sets per calendar date to be used at any level (freshman, jv or varsity) and using this information to calculate the player season limitations; 2) recommend the following state association adoption under Rule 5-1-1 regarding the procedure to use when securing line judges for volleyball matches. "Each school shall be responsible for providing one line judge to officiate all levels of volleyball matches. Schools are encouraged to use adults in these positions

continued on page 18

December Board of Directors Meeting Summary, con't from page 18

whenever possible.”; 3) recommend the volleyball preseason interschool scrimmage be held no earlier than Friday of week 7 on the standardized calendar through Thursday of week 8 on the standardized calendar; 4) recommend that in a three team preseason interschool scrimmage format to increase the points allowed from 19 to 21 and in a four team format to increase the points allowed from 13 to 15 points; 5) recommended surveying all volleyball coaches to determine in non-varsity level duals to modify the third set to 15 points rather than 25 points; 6) recommend surveying the volleyball coaches regarding proposed language eliminating ball-handling drills during the 6 minutes when the team is not on the court during the pre-match warm-ups. “When one team has exclusive use of the court, the other team must either be at its team bench or out of the playing area. Warming up with balls at the team bench or the spectator walkways is not permitted.”

Approved all six recommendations from the Volleyball Advisory Committee.

Motion Beem, second Kinder, to enter into closed session Matters involving the eligibility status of students where personally identifiable private information from a student's educational record may be reviewed or discussed. Section 610.021(6 and/or 14) R.S.Mo.; 20 U.S.C. 1232g(b); 34 C.F.R. 99.1 et seq. Motion passed 9-0 on a roll call vote with members Sulser, Beem, Brown, Eaton, Fisher, Hill, Keel, Kinder, and Maurer voting yes.

Motion Keel, second Sulser, to exit closed session. Motion passed 9-0 on a roll call vote with members Sulser, Beem, Brown, Eaton, Fisher, Hill, Keel, Kinder, and Maurer voting yes.

The following action was reported out of closed session.

Motion Beem, second Hill, to grant full eligibility to the student #1 at Ft. Zumwalt West High School. Motion passed 6-3 on a roll call vote with members Beem, Brown, Fisher, Hill, Keel, and Maurer voting yes and members Eaton, Kinder and Sulser voting no.

Motion Hill, second Keel, based on lack of evidence the transfer of student #2 of Ft. Zumwalt West High School was deemed not for athletic reasons. Motion passed 9-0 on a roll call vote with members Sulser, Beem, Brown, Eaton, Fisher, Hill, Keel, Kinder, and Maurer voting yes.

Motion Keel, second Fisher, based on lack of evidence the transfer of student #3 of Ft. Zumwalt West High School was deemed not for athletic reasons. Motion passed 6-3 on a roll call vote with members Beem, Brown, Fisher, Hill, Keel, and Kinder voting yes and members Eaton, Sulser and Maurer voting no.

Motion Hill, second Keel, to grant unrestricted eligibility to students #2 and #3 at Ft. Zumwalt West High School due to evidence of a hardship. Motion passed 8-1 on a roll call vote with members Sulser, Beem, Brown, Fisher, Hill, Keel, Kinder, and Maurer voting yes and Eaton voting no.

Urhahn presented eight items for consideration as Area Meeting Topics:

1. Should the Constitution be amended to prevent a redshirt year at an Affiliate Registered School?
2. Should there be exceptions for two non-school competitions in all individual sports?
3. Should the Sportsmanship Summit Date and Location be adjusted to ensure better attendance?
4. Should officials be able to rate schools on Sportsmanship of their players, coaches and fans?
5. Should we evaluate the certification process for all coaches and directors?
6. Should scores for all varsity contests be mandated to be placed on the MSHSAA website?
7. If more accountability for home school students, would you consider allowing them to participate on their MSHSAA residence school teams?
8. Petitions

Approved including the eight items presented as Area Meeting topics in January, 2014.

Urhahn reported to the Board on schools who had no attendance at a required administrators rules meeting. There were 17 schools that did not have any representation at a meeting this year as first year schools in violation of the rules. There was one school which has not had any representation at a meeting for four consecutive years. Urhahn indicated that he has drafted a letter to that school suggesting that they drop their full membership status and become an affiliate member school. The other schools in their first year of violation have letters drafted indicating their violation and to avoid penalty they need to be certain to attend an administrative rules meeting in the fall of 2014.

Approved staff recommendations regarding schools in violation of not attending a required administrators rules meeting.

Urhahn reported to the Board on the potential of two petitions being circulated before the December 15 deadline. No action taken.

Urhahn updated the Board on violations reported by Rock Bridge High School.

Directed the Executive Director to write a second letter to the Columbia Public Schools' Superintendent in regard to reported violations by Rock Bridge High School again requesting the school respond to the previously requested information.

Richards presented to the Board a Brain Injury Report for their approval.

Accepted the Brain Injury Report as presented.

Thompson reported to the Board on schools failing to submit the required officials ratings for fall sports. The following schools failed to submit fall official ratings: Calvary Lutheran: Boys Soccer, Lift for Life Academy: Boys Soccer, and Soldan International Studies: Football and Girls Volleyball.

Staff Recommendation: The schools should be placed on probation in the sport(s) concerned and be fined an additional \$100 per sport. (\$125 Total Fine). A certified letter shall be sent to the Superintendent indicating the consequences if the forms are not received a second consecutive year. (per Board Policy #32).

Approved staff recommendation to fine schools in violation of not submitting fall officials ratings.

Urhahn discussed with the Board the Association's policy on ejections and reviewing video on calls made by officials. Urhahn would like to draft language to add policies to the by-laws. The Board approved by consensus.

Stahl discussed with the Board on the number of schools that did not complete lineups this fall for girls tennis.

Determined that if a school posted a lineup for doubles that they would be forgiven for not posting the singles lineup for the girls tennis season.

Richards gave the Board an update on Normandy High School's ability to follow the proper procedures and policies of the Association. The school principal is now completing paperwork. No action taken.

The Board review miscellaneous newspaper article and the response form for the State Wrestling Championships.

The meeting was adjourned.

MSHSAA & NFHS Policy Statement on Steroids



The Missouri State High School Activities Association (MSHSAA) and the National Federation of State High School Associations (NFHS), strongly oppose the use of anabolic steroids and other performance-enhancing substances by high school student-athletes. Such use violates legal, ethical, and competitive equity standards and imposes unreasonable, long-term health risks.

The MSHSAA and the NFHS support prohibitions by educational institutions, amateur and professional organizations, and governmental regulators on the use of anabolic steroids and other controlled substances, except as specifically prescribed by physicians for therapeutic purposes.



Summer Football Contact Information

The Football Advisory Committee, the MSHSAA Board of Directors, and the MSHSAA staff want to be sure that all programs have the same opportunities to improve and build on their successes. Keep in mind that many of these procedures and policies are put into place for the safety of the student athlete.

Definitions

Full Contact:

Defined as football drills or live game simulations where "live action" occurs. Live action, as defined by USA Football is contact at game speed where players execute full tackles at a competitive pace taking players to the ground.

When players are in shells (shorts, shoulder pads, and helmets—NO GIRDLES), no live action drills or simulations will occur. This rule is intended to limit live action drills and simulations, and not the number of practices, a team may participate in wearing full pads. A team may participate in "air," "bags," "wrap," and "thud" drills and simulations at any point.

<u>Air:</u>	Players should run unopposed without bags or any opposition.
<u>Bags:</u>	Activity is executed against a bag, shield, or pad to allow for a soft-contact surface, with or without the resistance of a teammate or coach standing behind the bag.
<u>Wrap:</u>	Drills run at full speed until contact (which is above the waist) with the players remaining on their feet.
<u>Thud:</u>	Same as wrap, but tempo is competitive with no predetermined winner, and the players are not tackling to the ground.

3.15.6 Football Activities:

The following requirements are in place for the sport of football.

a. Definitions:

1. Half-Shell: Participants may wear football equipment consisting of helmets, shoulder pads, and jerseys only. Contact is permitted with blocking sleds, dummies, and hand-to-chest contact is allowed for training on hand placement and displacement of opponents only, and participants may not take other participants to the ground.
2. Full-Pad Tackle: Participants may wear equipment beyond what is defined as "half-shell" and contact beyond what is outlined in "half-shell" is allowed.
3. Acclimation Requirement: Full-pad tackle football is only allowed after a period of five (5) days of heat and equipment acclimation in half-shell. The first two (2) days: hel-

pets only (air); days three through five (3-5): helmets and shoulder pads (bags, wrap, and thud are allowed). These days will count as days of summer contact toward the football limit.

4. Full-Pad Tackle Football Team Camp: For the purposes of this section, a full-pad tackle football team camp shall be no fewer than three consecutive days and no more than six consecutive days. If such a team camp is attended for FEWER than three consecutive days, it will still count as three summer contact days toward the limit of 25 and will count as three full-pad tackle days toward the limit of nine. SECTION 3 2013-14 MSHSAA OFFICIAL HANDBOOK, Page 69

Q3: May a high school host a football team camp if it is not a full-contact camp (i.e. half-shell camps)?

A3: Yes, a school could hold a half-shell team camp. All teams must be accompanied by their school coach(es) and these days would count as days of contact. A school may NOT host a full-pad (no girdles) tackle team camp.

Half-Shell:

Participants may wear football equipment consisting of helmets, shoulder pads, and jerseys only (NO GIRDLES). Contact is permitted with blocking sleds, dummies, and hand-to-chest contact is allowed for training on hand placement and displacement of

opponents only, and participants may not take other participants to the ground (air, bags, wrap and thud).

*******Editor's Note: No MSHSAA catastrophic insurance coverage is in place during the summer.*******

Full-Pad Tackle Restrictions:

A maximum of nine (9) summer contact days may be used for full-pad tackle football under the following options. All remaining summer contact days shall be conducted in no more than half-shell.

1. Non-School Sponsored Football Team Camps (for full-pad tackle): Schools may allow personal player uniforms and equipment (helmets, pads, jerseys, etc.) to be utilized when the school is attending a non-school sponsored team football camp where the school coach will be accompanying and coaching the players. Full-pad tackle football is allowed at such a camp after the acclimation requirement is met.

*******Editor's Note: No MSHSAA catastrophic insurance coverage is in place during the summer.*******

2. School Sponsored Football Activity (for full-pad tackle): Any activity (competitive or instructional) sponsored by one school is "restricted to students enrolled at that school." Full-pad tackle football is allowed in such activities after the acclimation requirement is met.

*******Editor's Note: No MSHSAA catastrophic insurance coverage is in place during the summer.*******

Volleyball Advisory Committee Meeting Summary

Held Nov. 14, 2013

1. Recommend amending MSHSAA By-Law 3.25.1d to state that a player may participate in a maximum of 4 sets per calendar date to be used at any level (freshman, JV or varsity) and using this information to calculate the player season limitations.
2. Recommend the following state association adoption under Rule 5-1-1 regarding the procedure to use when securing line judges for volleyball matches. "Each school shall be responsible for providing one line judge to officiate all levels of volleyball matches. Schools are encouraged to use adults in these positions whenever possible."
3. Recommend the volleyball preseason interschool scrimmage be held no earlier than Friday of week 7 on the standardized calendar through Thursday of week 8 on the standardized calendar.
4. Recommend that in a three team preseason interschool scrimmage format to increase the points allowed from 19 to 21 and in a four team format to increase the points allowed from 13 to 15 points.
5. Recommended surveying all volleyball coaches to determine in non-varsity level duals to modify the third set to 15 points rather than 25 points.
6. Recommend surveying the volleyball coaches regarding proposed language eliminating ball-handling drills during the 6 minutes when the team is not on the court during the pre-match warm-ups. "When one team has exclusive use of the court, the other team must either be at its team bench or out of the playing area. Warming up with balls at the team bench or the spectator walkways is not permitted."

All Approved

2014 Show-Me Showdown Schedule

The time schedule for the 2014 MSHSAA Basketball Championships, SHOW-ME SHOWDOWN I & II, reflects a three-day format for all classes at the final site. Time modifications have been made in the schedule for the weekends to reflect both a recommendation of the MSHSAA Basketball Advisory Committee that was approved by the Board of Directors. Admission prices have been set at \$8 per session.

Games for Classes 1, 2, & 3, for Thursday, March 13, 2014, of the SHOW-ME SHOWDOWN I, will begin at 12:00 noon with the last game beginning at 8:20 p.m. and the Friday and Saturday games beginning at 11:00 a.m. See the detailed schedule below for times and details of which class and gender play.

Class 5 will begin the SHOW-ME SHOWDOWN II on Thursday, March 20, 2014, starting at 3:30 p.m. beginning with two semifinals girls games followed by two semifinal boys games with the last game starting at 8:30 p.m. Friday will feature the Class 5 third place games starting at 11:00 a.m. followed by the girls and boys Class 4 semifinals starting at 2:30 p.m. See the detailed schedule below for times and details of which class and gender play. The following is a complete schedule of games for the 2014 Show-Me Showdown.



SHOW-ME SHOWDOWN I

Session 1A: Thursday, March 13, Classes 2 & 3 **HEARNES CENTER – Semifinal Games**

- 12:00 p.m. – Boys Semifinal (Class 3)
- 1:40 p.m. – Boys Semifinal (Class 3)
- 3:20 p.m. – Girls Semifinal (Class 2)
- 5:00 p.m. – Girls Semifinal (Class 2)
- 6:40 p.m. – Boys Semifinal (Class 2)
- 8:20 p.m. – Boys Semifinal (Class 2)

Session 1B: Thursday, March 13, Classes 1 & 3 **MIZZOU ARENA – Semifinal Games**

- 12:00 p.m. – Girls Semifinal (Class 1)
- 1:40 p.m. – Girls Semifinal (Class 1)
- 3:20 p.m. – Boys Semifinal (Class 1)
- 5:00 p.m. – Boys Semifinal (Class 1)
- 6:40 p.m. – Girls Semifinal (Class 3)
- 8:20 p.m. – Girls Semifinal (Class 3)

Session 2: Friday, March 16, Classes 1, 2, & 3 **MIZZOU ARENA – Third Place Games**

- 11:00 a.m. – Girls Third Place (Class 1)
- 12:45 p.m. – Boys Third Place (Class 1)

Basketball Championship Weekends Change

The Basketball Advisory and the Athletic Directors Advisory submitted to the Board of Directors at their June 2011 meeting to switch the Class 4-5 Show-Me Showdown with the Class 1, 2, and 3 Show-Me Showdown Weekends. Starting with the 2012-13 school year the Class 1-3 District Tournament will be held on Saturday of week 33 thru Saturday of week 34. The Class 4-5 District Tournament will be held on Saturday of week 34 thru Saturday of week 35. Basketball Show-Me Showdown I in week 36 will be for Class 1-3 and Show-Me Showdown II in week 37 will be for Class 4-5.

- 2:30 p.m. – Girls Third Place (Class 3)
- 4:15 p.m. – Boys Third Place (Class 3)
- 6:00 p.m. – Girls Third Place (Class 2)
- 7:45 p.m. – Boys Third Place (Class 2)

Session 3: Saturday, March 17, Classes 1, 2, & 3 **MIZZOU ARENA – Championship Games**

- 11:00 a.m. – Girls Championship (Class 1)
- 12:50 p.m. – Boys Championship (Class 1)
- 2:40 p.m. – Girls Championship (Class 3)
- 4:30 p.m. – Boys Championship (Class 3)
- 6:20 p.m. – Girls Championship (Class 2)
- 8:10 p.m. – Boys Championship (Class 2)

SHOW-ME SHOWDOWN II

Session 1: Thursday, March 20, Class 5

- 3:30 p.m. – Girls Semifinal
- 5:10 p.m. – Girls Semifinal
- 6:50 p.m. – Boys Semifinal
- 8:30 p.m. – Boys Semifinal

Session 2: Friday, March 21, Class 4 & 5

- 11:00 p.m. – Girls Third Place (Class 5)
- 12:45 p.m. – Boys Third Place (Class 5)
- 3:20 p.m. – Girls Semifinal (Class 4)
- 5:00 p.m. – Girls Semifinal (Class 4)
- 6:40 p.m. – Boys Semifinal (Class 4)
- 8:20 p.m. – Boys Semifinal (Class 4)

Session 3: Saturday, March 22, Class 4 & 5

- 11:00 a.m. – Girls Third Place (Class 4)
- 12:50 p.m. – Boys Third Place (Class 4)
- 2:40 p.m. – Girls Championship (Class 5)
- 4:30 p.m. – Boys Championship (Class 5)
- 6:20 p.m. – Girls Championship (Class 4)
- 8:10 p.m. – Boys Championship (Class 4)

Board Interpretation on “Halftime Shootouts”

The following is an interpretation of the MSHSAA Amateur Awards Standards (By-Law 3.6) as they apply to athletic skill contests. The interpretation was adopted by the Board of Directors at its July 1, 1985 meeting.

“When a student is selected by chance to participate in a carnival type contest involving a skill of a sport, he or she may receive cash or merchandise awards as a result of that participation without its affecting his or her eligibility under the MSHSAA Amateur and Awards Standards. An example of this would be where a student is selected to participate in a half-time promotion at a University basketball game on the basis of a chance drawing of a number on a program which he or she purchased at the game.

In cases where such activities are scheduled and a student is required to enter for the purpose of competing for a cash or merchandise award, such activity would come under the restrictions of the amateur and awards standard and a youngster would jeopardize his or her eligibility in the sport concerned by competing for or accepting such awards.”

Basketball Pregame and Halftime Warm-up Procedure

In some areas of the state, some traditional pregame and halftime warm-up rituals are creating problems for schools and school administrators.

First, it is recommended that teams not be permitted to warm up at halftime of the game that precedes theirs (halftime of the junior varsity game in a JV-varsity doubleheader, etc.).

Next, the NFHS Basketball Rules Book states that home management will designate the location of each team's bench. The rules also state that the

pregame practice and first half basket for each team is the one farthest away from its bench. Teams are to conduct pregame and halftime warm-up on their half of the floor only.

If jogging or running is part of their warm-up drills, then it is to be confined to their half of the court. Teams are to refrain from circling the entire floor when they enter the court to warm-up. Officials are to enforce this once their jurisdiction begins by rule by assessing the head coach an indirect technical foul.

Teams leaving their locker rooms and entering the court are to proceed to their warm-up end of the court by the most direct route and at no time are they to pass underneath their opponent's basket. Baiting and taunting of opponents continues to be a problem in some areas, and conducting a segment of a team's warm-up activity in the opponent's end of the court has the potential to encourage poor sportsmanship.

Boys Volleyball – Registered Schools

The following MSHSAA schools are registered for the 2014 boys volleyball season: Affton, African Centered College Preparatory Academy, Bayless, Bishop DuBourg, Chaminade, Christian Brothers College, Christian, DeSmet, Duchesne, Eureka, Fox, Francis Howell Central, Francis Howell, Francis Howell North, Ft. Zumwalt East, Ft. Zumwalt North, Ft. Zumwalt South, Ft. Zumwalt West, Kirkwood, Lafayette (Wildwood), Lindbergh, Marquette, Mehlville, North Technical, Northwest (Cedar Hill), Notre Dame (Cape Girardeau), Oakville, Parkway Central, Parkway North, Parkway South, Parkway West, Pattonville, Ritenour, Rockwood Summit, Seckman, St. Dominic, St. Francis Borgia, St. Louis University, St. Mary's (St. Louis), Vianney, Webster Groves and Westminster Christian Academy

If your school is scheduled to play a team that is not listed above, please notify that school's athletic administrator. All schools participating in boys' volleyball must be registered for the sport with the MSHSAA.

Soccer Advisory Committee Summary

Held December 11, 2013

Thursday of week #36 for girls.

1. Recommend to the Officials Advisory Committee that they remind officials to provide their name, official ID number and field position to both schools prior to each game.

*2. Recommend to increase field requirements to a minimum of 62 yards by 110 yards for all sectional and quarterfinal games. If the host school does not have a field with the minimum dimensions and is unable to obtain a suitable field with the required dimensions at no cost to MSHSAA, the opposing school will have the opportunity to host. If both schools mutually agree to play on a smaller field they may do so.

**3. Recommend that an option is added to the electronic officials rating system for soccer to allow a coach to differentiate between a center and an AR position.

AMENDED: Send recommendation to the Officials Advisory and look at cost of changing website.

4. Recommend that the coach also receives an e-mail notification for yellow/red cards issued in addition to the AD. The AD is still required to respond, but the coach gets notification also.

5. Recommend to allow soccer preseason scrimmages to take place between Friday of week #6 and Thursday of week #7 for boys and between Friday of week #35 and

*6. Recommend to publish each school's total number of yellow/red cards issued for each season in the Journal, and look at ways to recognize schools in the future with a low card count. Perhaps in the future send this idea to the Sportsmanship Committee to create ways to promote and reward fair play in soccer.

AMENDED: A summary of all sports unsportsmanlike reports will be sent to each school's principal and athletic director.

* Denied
 ** Tabled for further study
 *** Approved as amended
 **** No action necessary
 All others approved



■ 2014 MSHSAA Track and Field Class 1 and 2 Championships Schedule

Day 1 -- Friday, May 23, 2014

Field Events: (Long and Triple Jump will be run cafeteria style. High Jump (5 active) and Pole Vault (5 active) will be run as final events only. All other field events will consist of prelims and finals.)

- 11:00 a.m. Pole Vault: Class 1 Girls (check in/warm up 9:45 a.m.)
 Long Jump: Class 2 Boys
 High Jump: Class 2 Girls
 Shot Put: Class 2 Boys
 Discus: Class 1 Girls
 Triple Jump: Class 1 Boys
- 2:00 p.m. Pole Vault: Class 1 Boys
 Triple Jump: Class 2 Girls
 High Jump: Class 2 Boys
 Shot Put: Class 2 Girls
 Discus: Class 1 Boys
 Long Jump: Class 1 Girls

Running Events: (Class 2 Boys precede Class 1 Boys and Class 2 Girls precede Class 1 Girls for all prelims and finals)

- 10:50 a.m. National Anthem
- Noon 4x800m Relay, FINAL, 1 Sect. 16, Class 2 Boys
 4x800m Relay, FINAL, 1 Sect. 16, Class 1 Boys
- 12:30 p.m. 110 High Hurdles (2 Heats) Class 2 Boys
 110 High Hurdles (2 Heats) Class 1 Boys
- 12:50 p.m. 100 High Hurdles (2 Heats) Class 2 Girls
 100 High Hurdles (2 Heats) Class 1 Girls
- 1:10 p.m. 100m Dash (2 Heats) Class 2 Boys
 100m Dash (2 Heats) Class 1 Boys
- 1:20 p.m. 100m Dash (2 Heats) Class 2 Girls
 100m Dash (2 Heats) Class 1 Girls
- 1:35 p.m. 4x200m Relay (2 Heats) Class 2 Boys
 4x200m Relay (2 Heats) Class 1 Boys
- 2:05 p.m. 4x200m Relay (2 Heats) Class 2 Girls
 4x200m Relay (2 Heats) Class 1 Girls
- 2:35 p.m. 1600m Run, FINAL, 1 Sect. of 16, Class 2 Girls
 1600m Run, FINAL, 1 Sect. of 16, Class 1 Girls
- 2:50 p.m. 4x100m Relay (2 Heats) Class 2 Boys
 4x100m Relay (2 Heats) Class 1 Boys
- 3:05 p.m. 4x100m Relay (2 Heats) Class 2 Girls
 4x100m Relay (2 Heats) Class 1 Girls
- 3:20 p.m. 400m Dash (2 Heats) Class 2 Boys
 400m Dash (2 Heats) Class 1 Boys
- 3:35 p.m. 400m Dash (2 Heats) Class 2 Girls
 400m Dash (2 Heats) Class 1 Girls
- 3:55 p.m. 300m Intermediate Hurdles (2 Heats) Class 2 Boys
 300m Intermediate Hurdles (2 Heats) Class 1 Boys
- 4:10 p.m. 300m Low Hurdles (2 Heats) Class 2 Girls
 300m Low Hurdles (2 Heats) Class 1 Girls
- 4:25 p.m. 800m Run, FINAL of 16, Class 2 Girls
 800m Run, FINAL of 16, Class 1 Girls
- 4:35 p.m. 200m Dash (2 Heats) Class 2 Boys
 200m Dash (2 Heats) Class 1 Boys
- 4:45 p.m. 200m Dash (2 Heats) Class 2 Girls
 200m Dash (2 Heats) Class 1 Girls
- 5:00 p.m. 3200m Run, FINAL, 1 Sect. of 16, Class 2 Boys
 3200m Run, FINAL, 1 Sect. of 16, Class 1 Boys
- 5:30 p.m. 4x400m Relay (2 Heats) Class 2 Boys
 4x400m Relay (2 Heats) Class 1 Boys
- 5:50 p.m. 4x400m Relay (2 Heats) Class 2 Girls
 4x400m Relay (2 Heats) Class 1 Girls

Day 2 -- Saturday, May 24, 2014

Field Events: (Long and Triple Jump will be run cafeteria style. High Jump (5 active) and Pole Vault (5 active) will be run as final events only. All other field events will consist of prelims and finals.)

- 11:00 a.m. Pole Vault: Class 2 Girls (check in/warm up 9:45 a.m.)
 Long Jump: Class 1 Boys
 High Jump: Class 1 Girls
 Shot Put: Class 1 Boys
 Discus: Class 2 Girls
 Triple Jump: Class 2 Boys
- 2:00 p.m. Pole Vault: Class 2 Boys
 Triple Jump: Class 1 Girls
 High Jump: Class 1 Boys
 Shot Put: Class 1 Girls
 Discus: Class 2 Boys
 Long Jump: Class 2 Girls

Running Events: (Class 2 Boys precede Class 1 Boys and Class 2 Girls precede Class 1 Girls for all prelims and finals)

- 10:20 a.m. Opening Ceremonies
- Noon 4x800m Relay, FINAL, 1 Sect. of 16, Class 2 Girls
 4x800m Relay, FINAL, 1 Sect. of 16, Class 1 Girls
- 12:30 p.m. 110 High Hurdles, FINAL of 8, Class 2 Boys
 110 High Hurdles, FINAL of 8, Class 1 Boys
- 12:40 p.m. 100 High Hurdles, FINAL of 8, Class 2 Girls
 100 High Hurdles, FINAL of 8, Class 1 Girls
- 12:50 p.m. 100m Dash, FINAL of 8, Class 2 Boys
 100m Dash, FINAL of 8, Class 1 Boys
- 1:00 p.m. 100m Dash, FINAL of 8, Class 2 Girls
 100m Dash, FINAL of 8, Class 1 Girls
- 1:10 p.m. 4x200m Relay, FINAL of 8, Class 2 Boys
 4x200m Relay, FINAL of 8, Class 1 Boys
- 1:20 p.m. 4x200m Relay, FINAL of 8, Class 2 Girls
 4x200m Relay, FINAL of 8, Class 1 Girls
- 1:30 p.m. 1600m Run, FINAL, 1 Sect. of 16, Class 2 Boys
 1600m Run, FINAL, 1 Sect. of 16, Class 1 Boys
- 1:45 p.m. 4x100m Relay, FINAL of 8, Class 2 Boys
 4x100m Relay, FINAL of 8, Class 1 Boys
- 1:55 p.m. 4x100m Relay, FINAL of 8, Class 2 Girls
 4x100m Relay, FINAL of 8, Class 1 Girls
- 2:05 p.m. 400m Dash, FINAL of 8, Class 2 Boys
 400m Dash, FINAL of 8, Class 1 Boys
- 2:15 p.m. 400m Dash, FINAL of 8, Class 2 Girls
 400m Dash, FINAL of 8, Class 1 Girls
- 2:25 p.m. 300m Intermediate Hurdles, FINAL of 8, Class 2 Boys
 300m Intermediate Hurdles, FINAL of 8, Class 1 Boys
- 2:35 p.m. 300m Low Hurdles, FINAL of 8, Class 2 Girls
 300m Low Hurdles, FINAL of 8, Class 1 Girls
- 2:45 p.m. 800m Run, FINAL of 16, Class 2 Boys
 800m Run, FINAL of 16, Class 1 Boys
- 2:55 p.m. 800m Run, FINAL of 16, Class 2 Girls
 800m Run, FINAL of 16, Class 1 Girls
- 3:05 p.m. 200m Dash, FINAL of 8, Class 2 Boys
 200m Dash, FINAL of 8, Class 1 Boys
- 3:15 p.m. 200m Dash, FINAL of 8, Class 2 Girls
 200m Dash, FINAL of 8, Class 1 Girls
- 3:25 p.m. 3200m Run, FINAL, 1 Sect. of 16, Class 2 Girls
 3200m Run, FINAL, 1 Sect. of 16, Class 1 Girls
- 3:55 p.m. 4x400m Relay, FINAL of 8, Class 2 Boys
 4x400m Relay, FINAL of 8, Class 1 Boys
- 4:10 p.m. 4x400m Relay, FINAL of 8, Class 2 Girls
 4x400m Relay, FINAL of 8, Class 1 Girls

■ 2014 MSHSAA Track and Field Class 3 and 4 Championships Schedule

Day 1 -- Friday, May 30, 2014

Field Events: (Long and Triple Jump will be run cafeteria style. High Jump (5 active) and Pole Vault (5 active) will be run as final events only. All other field events will consist of prelims and finals.)

11:00 a.m. Pole Vault: Class 3 Girls (check in/warm up 9:45 a.m.)
 Long Jump: Class 4 Boys
 High Jump: Class 4 Girls
 Shot Put: Class 4 Boys
 Discus: Class 3 Girls
 Triple Jump: Class 3 Boys

2:00 p.m. Pole Vault: Class 3 Boys
 Triple Jump: Class 4 Girls
 High Jump: Class 4 Boys
 Shot Put: Class 4 Girls
 Discus: Class 3 Boys
 Long Jump: Class 3 Girls

Running Events: (Class 4 Boys precede Class 3 Boys and Class 4 Girls precede Class 3 Girls for all prelims and finals.)

10:50 a.m. National Anthem

Noon 4x800m Relay, FINAL, 1 Sect. 16, Class 4 Boys
 4x800m Relay, FINAL, 1 Sect. 16, Class 3 Boys
 12:30 p.m. 110 High Hurdles (2 Heats) Class 4 Boys
 110 High Hurdles (2 Heats) Class 3 Boys
 12:50 p.m. 100 High Hurdles (2 Heats) Class 4 Girls
 100 High Hurdles (2 Heats) Class 3 Girls
 1:10 p.m. 100m Dash (2 Heats) Class 4 Boys
 100m Dash (2 Heats) Class 3 Boys
 1:20 p.m. 100m Dash (2 Heats) Class 4 Girls
 100m Dash (2 Heats) Class 3 Girls
 1:35 p.m. 4x200m Relay (2 Heats) Class 4 Boys
 4x200m Relay (2 Heats) Class 3 Boys
 2:05 p.m. 4x200m Relay (2 Heats) Class 4 Girls
 4x200m Relay (2 Heats) Class 3 Girls
 2:35 p.m. 1600m Run, FINAL, 1 Sect. of 16, Class 4 Girls
 1600m Run, FINAL, 1 Sect. of 16, Class 3 Girls
 2:50 p.m. 4x100m Relay (2 Heats) Class 4 Boys
 4x100m Relay (2 Heats) Class 3 Boys
 3:05 p.m. 4x100m Relay (2 Heats) Class 4 Girls
 4x100m Relay (2 Heats) Class 3 Girls
 3:20 p.m. 400m Dash (2 Heats) Class 4 Boys
 400m Dash (2 Heats) Class 3 Boys
 3:35 p.m. 400m Dash (2 Heats) Class 4 Girls
 400m Dash (2 Heats) Class 3 Girls
 3:55 p.m. 300m Intermediate Hurdles (2 Heats) Class 2, 4 Boys
 300m Intermediate Hurdles (2 Heats) Class 1, 3 Boys
 4:10 p.m. 300m Low Hurdles (2 Heats) Class 4 Girls
 300m Low Hurdles (2 Heats) Class 3 Girls
 4:25 p.m. 800m Run, FINAL (2 Heats) Class 4 Girls
 800m Run, FINAL (2 Heats) Class 3 Girls
 4:45 p.m. 200m Dash (2 Heats) Class 4 Boys
 200m Dash (2 Heats) Class 3 Boys
 4:55 p.m. 200m Dash (2 Heats) Class 4 Girls
 200m Dash (2 Heats) Class 3 Girls
 5:10 p.m. 3200m Run, FINAL, 1 Sect. of 16, Class 4 Boys
 3200m Run, FINAL, 1 Sect. of 16, Class 3 Boys
 5:40 p.m. 4x400m Relay (2 Heats) Class 4 Boys
 4x400m Relay (2 Heats) Class 3 Boys
 6:00 p.m. 4x400m Relay (2 Heats) Class 4 Girls
 4x400m Relay (2 Heats) Class 3 Girls

Day 2 -- Saturday, May 31, 2014

Field Events: (Long and Triple Jump will be run cafeteria style. High Jump (5 active) and Pole Vault (5 active) will be run as final events only. All other field events will consist of prelims and finals.)

11:00 a.m. Pole Vault: Class 4 Girls (check in/warm up 9:45 a.m.)
 Long Jump: Class 3 Boys
 High Jump: Class 3 Girls
 Shot Put: Class 3 Boys
 Discus: Class 4 Girls
 Triple Jump: Class 4 Boys

2:00 p.m. Pole Vault: Class 4 Boys
 Triple Jump: Class 3 Girls
 High Jump: Class 3 Boys
 Shot Put: Class 3 Girls
 Discus: Class 4 Boys
 Long Jump: Class 4 Girls

Running Events: (Class 4 Boys precede Class 3 Boys and Class 4 Girls precede Class 3 Girls.)

10:20 a.m. Opening Ceremonies

Noon 4x800m Relay, FINAL, 1 Sect. of 16, Class 4 Girls
 4x800m Relay, FINAL, 1 Sect. of 16, Class 3 Girls
 12:30 p.m. 110 High Hurdles, FINAL of 8, Class 4 Boys
 110 High Hurdles, FINAL of 8, Class 3 Boys
 12:40 p.m. 100 High Hurdles, FINAL of 8, Class 4 Girls
 100 High Hurdles, FINAL of 8, Class 3 Girls
 12:50 p.m. 100m Dash, FINAL of 8, Class 4 Boys
 100m Dash, FINAL of 8, Class 3 Boys
 1:00 p.m. 100m Dash, FINAL of 8, Class 4 Girls
 100m Dash, FINAL of 8, Class 3 Girls
 1:10 p.m. 4x200m Relay, FINAL of 8, Class 4 Boys
 4x200m Relay, FINAL of 8, Class 3 Boys
 1:20 p.m. 4x200m Relay, FINAL of 8, Class 4 Girls
 4x200m Relay, FINAL of 8, Class 3 Girls
 1:30 p.m. 1600m Run, FINAL, 1 Sect. of 16, Class 4 Boys
 1600m Run, FINAL, 1 Sect. of 16, Class 3 Boys
 1:45 p.m. 4x100m Relay, FINAL of 8, Class 4 Boys
 4x100m Relay, FINAL of 8, Class 3 Boys
 1:55 p.m. 4x100m Relay, FINAL of 8, Class 4 Girls
 4x100m Relay, FINAL of 8, Class 3 Girls
 2:05 p.m. 400m Dash, FINAL of 8, Class 4 Boys
 400m Dash, FINAL of 8, Class 3 Boys
 2:15 p.m. 400m Dash, FINAL of 8, Class 4 Girls
 400m Dash, FINAL of 8, Class 3 Girls
 2:25 p.m. 300m Intermediate Hurdles, FINAL of 8, Class 4 Boys
 300m Intermediate Hurdles, FINAL of 8, Class 3 Boys
 2:35 p.m. 300m Low Hurdles, FINAL of 8, Class 4 Girls
 300m Low Hurdles, FINAL of 8, Class 3 Girls
 2:45 p.m. 800m Run, FINAL (2 Heats) Class 4 Boys
 800m Run, FINAL (2 Heats) Class 3 Boys
 3:05 p.m. 200m Dash, FINAL of 8, Class 4 Boys
 200m Dash, FINAL of 8, Class 3 Boys
 3:15 p.m. 200m Dash, FINAL of 8, Class 4 Girls
 200m Dash, FINAL of 8, Class 3 Girls
 3:25 p.m. 3200m Run, FINAL, 1 Sect. of 16, Class 4 Girls
 3200m Run, FINAL, 1 Sect. of 16, Class 3 Girls
 3:55 p.m. 4x400m Relay, FINAL of 8, Class 4 Boys
 4x400m Relay, FINAL of 8, Class 3 Boys
 4:10 p.m. 4x400m Relay, FINAL of 8, Class 4 Girls
 4x400m Relay, FINAL of 8, Class 3 Girls

Tennis Advisory Committee Summary

Held November 5, 2013

1. Recommend using 8 game pro set ad-scoring with regular tiebreaker in an 8-8 tie for doubles and 2 out of 3 no-ad scoring for singles in all postseason Team Tennis scoring. This scoring format will be used for the Team District, Team Sectional and Team State tournament.
2. Recommend starting Team dual matches in District, Sectional and State with doubles followed by singles.
3. Recommend adding additional wording for clarification to Item B-2-b regarding substitutions at Team Sectional and Team State.
 - b. Call for a substitute, with the understanding that he/she (the injured, ill, or disciplined player) will not be able to return to play until the next team match. (If a substitution is made, the

substitute will complete the team match in progress – team district, sectionals or state.) (A player substituted for, using a direct substitution, in the Sectional or State semi-final may return to the line-up to play in the finals)

NOTE 1: Substitution in B.2. above must be a direct replacement of the ill or injured player.

4. Recommend additional wording to Section 3-J-4 the following:
Every effort will be made to allow teams 90 minutes between semi-final and final matches.

*Amended by Board: 90 minutes will be provided between semifinal & final matches unless weather & extenuating circumstances determine otherwise.

5. Recommend that head tennis coaches, after informing the opposing coach, issue a School to School report on a player from another school for code violations or a special report on an opposing coach for not enforcing code violations during a match. The School to School report shall be filed using the MSHSAA website and would be received by the opposing school Athletic Director and Principal.
6. Recommend that the Tennis Manual reemphasizes that any player ejected or removed from a match for unsportsmanlike/flagrant behavior will result in the player sitting out the next contest (dual/tournament) at the same level of which the ejection/removal occurred. By-law 5.5.1
 - * Denied
 - ** Tabled for further study
 - *** Approved as amended
 - All others approved

New Adjudicator Evaluation Process

Music directors are required evaluate district and state festival adjudicators each year. This process is to be completed via the Festival Manager Program under the 'Status' link as soon after the completion of the district or state festival. The evaluation process has been revised to provide better feedback to the adjudicators on his/her strengths and areas to improve. Directors will rate each area using a rating scale of 1-5 with 1 being the highest and 5 being the lowest. Listed below are the Four Phases of Adjudication and the Adjudicator Rating Scale.

Four Phases of Adjudication (in no particular order)

1. **Communication Skills:** The adjudicator:
 - Provided clear and effective written/oral assessments of the performance.
 - Provided legible written comments.
 - Completed all areas of the Adjudicator's Evaluation Form.
2. **Consistency:** The adjudicator:
 - Provided comments appropriate to justify the rating received.
 - Demonstrated knowledge of the performance event type.
 - Displayed knowledge of MSHSAA Standards for Ratings.
3. **Effort:** The adjudicator:
 - Was actively engaged in the performance.
 - Worked to keep the performance center running on schedule.
4. **Professionalism:** The adjudicator:
 - Demonstrated knowledge of rules/policies of the MSHSAA festival.
 - Dressed appropriately.
 - Demonstrated a welcoming demeanor.
 - Demonstrated conduct expected of a MSHSAA adjudicator.

Adjudicator Rating Scale –

1. **Exemplary:** Adjudicator demonstrates exceptional skills.
2. **Outstanding:** Adjudicator demonstrates highly effective skills.
3. **Satisfactory:** Adjudicator demonstrates adequate skills.
4. **Unsatisfactory:** Adjudicator demonstrates a deficiency of one or more skills.
5. **Ineffective:** Director must include specific reason(s) when submitting this rating.

Spirit Advisory Committee Meeting Summary

Held on Oct. 15, 2013

There were no recommendations from the Spirit Advisory Committee for the 2013-14 school year.

- * Denied
- ** Tabled
- *** Approved as Amended
- **** No Action
- All Others Approved

2014-15 National High School Policy Debate Topic: Oceans

Resolved: *The United States federal government should substantially increase its non-military exploration and/or development of the Earth's oceans.*

MSHSAA Guidelines for Fan/Spectator Support Items

In the chart below, **ONLY** those items marked “Yes” will be allowed as fan/spectator support items at all MSHSAA District and State Series Championships. **Schools are encouraged to follow these guidelines during the regular season.** Sportsmanlike vocal cheering and support from the team bench area are encouraged. The items indicated on this page are for use by all fans/spectators.

LEGEND: BA-Baseball BK-Basketball CC-Cross Country FB-Football GO-Golf SO-Soccer
SB-Softball SW-Swimming & Diving TN-Tennis TR-Track & Field VB-Volleyball WR-Wrestling

SPORT	BA	BK	CC	FB	GO	SO	SB	SW	TN	TR	VB	WR
Balloons	Yes	No	Yes	Yes	Yes	Yes	Yes	No	Yes	Yes	No	No
Banners on wall	Yes	Yes	Yes	Yes	Yes	Yes	Yes	Yes	Yes	Yes	Yes	Yes
Confetti/shredded paper	No	No	No	No	No	No	No	No	No	No	No	No
Hand held signs (no obstruction of view)	Yes	No	Yes	Yes	Yes	Yes	Yes	No	Yes	Yes	No	No
Laser light/pointer/flashing objects	No	No	No	No	No	No	No	No	No	No	No	No
Megaphones (Exception: Sideline Cheerleaders only)	No	No	No	No	No	No	No	No	No	No	No	No
Artificial noisemakers, (including but not limited to horns, cow bells, bells, buzzers, shakers, clickers, thunder sticks, rattles, instruments not part of a band)	Yes	No	Yes	Yes*	No	Yes	Yes	No	No	Yes	No	No
Compressed Air Horns/sirens	No	No	No	No	No	No	No	No	No	No	No	No
Whistles	No	No	No	No	No	No	No	No	No	No	No	No
Shirts on fans (required)	No	Yes	No	No	No	No	No	Yes	Yes	No	Yes	Yes
Team Introduction Run-Throughs or Break Away Banners (fans)	No	No	No	No	No	No	No	No	No	No	No	No
Team Introduction Run-Throughs or Break Away Banners (team personnel & sideline cheerleaders)	Yes	Yes	Yes	Yes	Yes	Yes	Yes	Yes	Yes	Yes	Yes	Yes
Poms, spirit/rally towels	Yes	Yes	Yes	Yes	Yes	Yes	Yes	Yes	Yes	Yes	Yes	Yes
Cannons/muskets/guns/fireworks	No	No	No	No	No	No	No	No	No	No	No	No
Carried school flags (Running/taunting prohibited)	Yes	Yes	Yes	Yes	Yes	Yes	Yes	Yes	Yes	Yes	Yes	Yes
Live animals	No	No	No	No	No	No	No	No	Yes	No	No	No

*not at the Dome

State Music Festival Scheduling

Problems scheduling performances at the MSHSAA State Music Festival due to local conflicts (i.e. proms, musicals, theatrical productions, athletic events, etc.) are becoming more prevalent. Due to the size of the festival, it is impossible to schedule every performance to avoid local conflicts.

School administrators and activities directors are asked to avoid scheduling local events that will conflict with the MSHSAA Music Festival performances. The dates of the 2014 Festival are scheduled for May 1-3.

Music directors should also be aware that with approximately 9,000-10,000 students participating at the State Festival each year, some events from your school may be scheduled at the same time. It is impossible to build a schedule that will allow every director to hear each entry. Therefore, schedule changes will only be made if there is a direct conflict with an accompanist or a student scheduled for two events during the same time period. Please remember that an individual may accompany no more than 20 entries per day at the district and state music festivals.

Due to the number of participants at the State Festival, the MSHSAA staff will not be able to honor specific performance time requests. In an effort to assist school administrators and music directors in making appropriate plans for the event as far in advance as possible, a brief summary of the scheduling process is being presented.

Schools should plan to have their schedule encompass the amount of time indicated below. These performance schedules are based on the average amount of time necessary to accommodate the entries as listed.

40 or more entries.....allow 8 hours
30-39 entries.....allow 7 hours
20-29 entries.....allow 6 hours
10-19 entries.....allow 5 hours
6-9 entries.....allow 4 hours
5 or fewer entries.....allow 3 hours

Schools spending the night prior to their performance date should plan on beginning early in the morning. Schools spending the night the day of the performance should plan on performing through the end of the day. Schools with many entries will be scheduled to occupy the mid-morning through afternoon time slots.

When listing accompanists, it is very important that only a true accompanist is listed. If directors list themselves and are not truly accompanying the performance, scheduling problems for their school

and other schools may occur. Please list events appropriately. Your cooperation is appreciated.

This year, selected schools located in the Northeast, Central, South Central and Kansas City districts are scheduled to perform on Thursday, May 1. All schools located in the Northwest and selected schools located in the Kansas City, Northeast and South Central MSHSAA Board Districts will attend the festival on Friday, May 2. All schools located in the St. Louis, Southwest, Southeast and selected schools located in the South Central and Central MSHSAA Board Districts will attend the festival on Saturday, May 3. If you are unsure which day you are assigned, go to the Music Activities link of the MSHSAA web site (www.mshsaa.org). If your school is not listed, the school did not register for music for the 2013-14 school year, and you should contact MSHSAA immediately.



Music Awards Now Available to Music Students and Schools

MSHSAA offers music awards for purchase by individual music students and schools to recognize outstanding performances at the district and state music festivals. These quality awards are designed to recognize the achievements of students or groups receiving a division 1 or 2 rating at the district and state festivals. The cost per medal is \$3.00.

A plaque may also be purchased to recognize large and small ensembles that receive a 1 rating at the MSHSAA Music Festival. The plaque has been designed to accommodate six past, present and future groups. Plaques may be ordered for \$50 which includes six plates. Engraving, which includes the state seal, is \$7 per plate.

Order forms for awards are located on the MSHSAA web site by selecting the "music activities" link. The orders and full payment or purchase order must be sent to MSHSAA. After processing, the awards will be shipped directly from the supplier to the address on the order form.

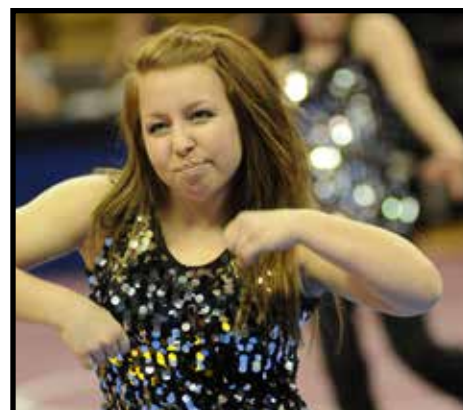
All proceeds from the sale of the music awards is utilized to fund the graded music list projects and the adjudicators' training program. Your continued support of this program will continue to benefit the interscholastic music program.

Spring Tryouts for Sideline Cheer, Pom & Winter Guard Teams Require Physicals

The MSHSAA Board of Directors has interpreted By-Law 4.5.6 to include tryouts as a recognized event for sideline cheerleading and dance teams. School administrators and event sponsors should be certain all students involved in the tryouts provide a physician's certificate stating that the individual is physically able to participate in sideline cheerleading or dance activities as required prior to participating in any activities in preparation for tryouts.

It should be noted that cheerleading and dance physicals issued on or after February 1, 2014, are valid for the remainder of the current school year and all of the upcoming school year (2014-2015).

To keep problems at a minimum, please provide advance notice of this requirement to interested students to allow sufficient time for physicals to be obtained prior to tryouts.



Speech Season Ends April 1

Speech Season Ends April 1
MSHSAA member schools participating in speech and debate contests are to end their seasons by April 1, 2014. Only those individuals who have qualified for the 2014 MSHSAA Speech & Debate Championships, held April 25-26, may continue beyond the official close of the 2013-14 speech season.

Speech and debate coaches should refer to the 2013-14 MSHSAA Official Handbook, which indicates the season limits for interscholastic speech programs. The by-law provides that "no

interscholastic debate, dramatics, or speech events shall be held before the second Friday in October or after April 1."

Exception: Schools shall be permitted to participate in one interscholastic speech, debate, and/or drama event in addition to the MSHSAA State Tournament, between April 1 and the beginning of summer. Such event must count as one of the student's 11 allowable regular season speech, debate, and drama events for that school year as per By-Law 4.3.1 (Limits on Participation) and must meet the travel regulations per By-Law 4.3.4e.

Revised Music Adjudicator Evaluation Form

The Adjudicator Training Sub-Committee has been working the past 2-3 years reviewing and revising the MSHSAA Adjudicator Training materials and adjudicator evaluation forms (excluding sight reading). As a result the Standards for Ratings have been updated, including new terms and definitions. The new terminology should better define the expectations for the MSHSAA evaluative music festivals.

Music directors are encouraged to share this information with their students, parents and administration prior to participating in this year's MSHSAA Music Festivals. The terms and definitions are included on the sample adjudication forms located under the 'Music Activities' link and are also listed below. Music directors are encouraged to share this information with students, parents and administrators.

Standards for Ratings	
Term	Definition
Exemplary	An exemplary performance that consistently demonstrates true musical expression and few technical errors . The performance is worthy of the distinction of being recognized as among the very best .
Outstanding	An outstanding performance of distinctive quality yet has minor defects in musical expression and fundamental technique.
Satisfactory	A satisfactory performance showing accomplishment and marked promise , but lacking consistency of musical expression and fundamental technique.
Developing	A developing performance indicating room for improvement in consistent musical expression and fundamental technique . Such a performance would include many technical errors, poor musical expression and ineffective use of existing instrumental or choral voicing.
Ineffective	An ineffective performance indicating an obvious lack of overall preparation .

Debate Judges Needed for State Speech Tournament

There may be a shortage of qualified debate judges for this year's tournament. Any school able to supply an extra judge or judges should contact Greg Stahl at the MSHSAA, (573) 875-4880. **Please note that schools qualifying four or more students in debate (Cross-Examination, Lincoln-Douglas, and Public Forum) for the state tournament are required to provide a second debate judge.** Your assistance and cooperation will be greatly appreciated.

Schools to Provide Timers at State Speech Tournament

Timekeepers for the MSHSAA Speech and Debate Championships are to be provided by participating schools. Upon recommendation of the Speech Advisory Committee and approval of the Board of Directors, each school qualifying in Cross Examination, Lincoln-Douglas, Public Forum Debate, or any individual event, shall provide a timekeeper. Schools with qualifiers on Friday and Saturday shall be prepared to bring a timekeeper each day. MSHSAA will select timekeepers for individual events and notify the schools of their responsibilities.

Late Penalty Assessed for District and State Speech

Schools submitting entries after the specified deadline date for the district and state level events in speech shall be assessed a late entry penalty fee of \$100. To avoid being assessed the penalty, directors should be certain to submit their district and state entries by the appropriate deadlines. New/additional entries will not be accepted within 7 days prior to the start of each district tournament. See your school's home page on the MSHSAA website for the "district entries" link. The deadlines for each district is listed in the Speech/Debate/Theatre Manual located on the MSHSAA website under the "Activities" tab.

2013 Boys Soccer Championship Officials

Sectionals – (Class 1) Michael Basco (Manchester), Scott Caldwell (Columbia), Paul Dueker (St. Louis), Henry Enlow (Ozark), Christine Francis (Kansas City), Michael Gilmore (Jefferson City), Tim Hantak (St. Louis), James Henson (St. Louis), Sean Hollrah (Columbia), Chris King (Lake St. Louis), Michael McCrary (Columbia), Ken McCurry (Kingsville), Chris Miller (Platte City), Ben Moore (Waynesville), Clancy Moore (Festus), Brian Nickel (Weatherby Lake), Tim Noonan (Springfield), Samuel Orr (Jefferson City), Caleb Perry (Independence), Dennis Pivin (St. Charles), Jim Roepke (St. Louis), Ken Seitz (St. Peters), Ken Seyer (Jefferson City), Calvin Sweeten (Overland Park); **(Class 2)** Richard Banahan (St. Louis), Landon Berry (Lee's Summit), Joe Buffa (Florissant), Scott Byers (St. Joseph), Brad Chilton (Ellisville), Ken Clifton (Arnold), William Galluzzo (Bridgeton), Vernon Gano (O'Fallon), Chris Guilfoyle (Neosho), James Heisner (St. Louis), Michael Love (Kearney), Shaun McCurry (Independence), Pat McMahon (St. Louis), Richard Omenski (Kansas City), Jared Palmer (Joplin), Rory Reynolds (St. Peters), Tom Smith (O'Fallon), Steven Talbott (O'Fallon), Emilio Tellini (Wildwood), Marc Tiemann (Merriam), Mike Twellman (St. Louis), Robert Wallace (Washington), Stephen Walters (O'Fallon), Andy Wilkinson (Springfield); **(Class 3)** Ken Bartkoski (Lee's Summit), Phil Beermann (St. Louis), Chris Benbow (St. Louis), Tim Brown (Springfield), Courtney Donohue (Springfield), Andy Ellsworth (Springfield), Anthony Gardner (Independence), Kelly Gatts (Moberly), Ben Gochnauer (Lee's Summit), Doug Helfrich (St. Peters), Edward Kaminski (St. Louis), Tim Lammering (O'Fallon), Andy McKee (Boonville), Roumen Mihov (St. Peters),

Ed Mulholland (Jefferson City), Eric Neverve (Kansas City), Eric Oberle (DeSoto), Keith Pinter (St. Louis), Aaron Rench (Platte City), Ed Rook (Florissant), Mark Rutherford (St. Charles), Karen Swanner (Glencarbon), Luke Swartz (Belton), Stephen Valle (St. Louis).

Quarterfinals – (Class 1) Phil Beermann (St. Louis), Jenifer Boul (St. Peters), Jason Florez (Springfield), Ben Gochnauer (Lee's Summit), Ken Kwantes (Rolla), Ben Moore (Waynesville), Aaron Rench (Platte City), Pat Sanders (St. Louis), Jeff Shelton (Florissant), Timothy Tate (St. Louis), Stephen Valle (St. Louis), Steven Wolcott (Smithville); **(Class 2)** Ken Bartkoski (Lee's Summit), Brad Chilton (Ellisville), Courtney Donohue (Springfield), Andy Ellsworth (Springfield), Jacob Heilich (Arnold), Doug Helfrich (St. Peters), Chris King (St. Louis), Phill Lewis (Marshfield), Michael May (Ballwin), Eric Oberle (DeSoto), Naomi Omenski (Kansas City), Tanner Philip (Blue Springs); **(Class 3)** Paul Dueker (St. Louis), Jeffrey Hay (Cape Girardeau), Chris Kelly (Florissant), Rob Kyle (Harrisonville), Chuck Lonardo (Joplin), Joseph Macht (Liberty), Tim Noonan (Springfield), Jeff Pulley (Jackson), Marty Rocco (St. Peters), Mark Rutherford (St. Charles), Greg Spilman (Springfield), Denis Zijadic (Gladstone).

Championships – Brad Chilton (Ellisville), Andy Ellsworth (Springfield), Anthony Gardner (Independence), Chris Guilfoyle (Neosho), Jacob Heilich (Arnold), Patrick Hofheins (Sedalia), Sean Hollrah (Columbia), Chris Miller (Platte City), Ben Moore (Waynesville), Richard Omenski (Kansas City), Jared Palmer (Joplin), Mark Rutherford (St. Charles), Ken Seitz (St. Peters), Ken Seyer (Jefferson City), Jeff Shelton (Florissant), Luke Swartz (Belton), Mike Twellman (St. Louis), Andy Wilkinson (Springfield).



Officiating Income Must Be Reported on Tax Return

As independent contractors, officials are reminded that income they receive from officiating must be reported on their income tax returns. Records of fees received and expenses incurred should be carefully maintained for verification purposes. Please direct any questions you may have to your tax preparation specialist or accountant.

Girls District Soccer Officials Selection

Soccer officials for the 2014 girls district soccer tournaments shall be selected by the host manager using the District Officials Recommendation Forms. The District Officials Recommendation Forms shall be submitted by each participating school via the website no later than April 24, 2014.

All district managers will meet to select district soccer officials on Wednesday, April 30, at 7 pm at the following locations: Westminster Christian Academy, Blue Springs South High School, Jefferson City High School, or Glendale High School. The officials notification date for district assignments is no earlier than 6:30 a.m. on May 1, 2014.

District managers are reminded that officials registered with the MSHSAA under the reciprocal agreement are not permitted to work MSHSAA district (or state) playoff games.

All girls soccer schools are to complete the State Officials Recommendation Forms online no later than April 24.

2013 Boys Swimming & Diving Championship Officials

Mark, Adams (St. Louis), Charles Bremer (St. Louis), Lisa Cocks (Lee's Summit), Bob Cummins (Carthage), Julie Elliott (Liberty), Jennifer Gibbs (Kansas City), Chad Marnholtz (Warrensburg), Ann Merten (St. Louis), John Mullen (Springfield), Errich Oberlander (Raymore), Teresa Reeder (Webb City), Jack Steck (Springfield), Paul Swafford (Lee's Summit), Jim Whytlaw (Springfield), Tom Yaeger (Manchester), Jeff Zieger (Platte City).

2013 Volleyball - Sectional Officials: David Arthur (Houston), Teresa Arthur (Houston), Joe Baldwin (Sikeston), Jeffrey Blume (Broseley), Jason Bruns (Cape Girardeau), Trent Bryant (Independence), Ken Corum (Kansas City), Terry Funderburk (Bridgeton), Daniel Gallagher (Maryville), Patrick Garrett (Stockton), Dave Hackmann (Washington), Susan Harvey (Ballwin), Rod Hemphill (Cassville), Roger Hensley (El Dorado), Bev Hollis (Overland), Bob Horton (Springfield), Brenda Johnson (Maryville), Tina Joliff (West Plains), Cheryl Kanak (Lincoln), Timothy Karle (Jefferson City), Brendan Keller (St. Louis), Lisa Kisse (New Haven), Patricia Lindenbusch (O'Fallon), Amy Loewen (Branson), Shannon Loso (Ballwin), Bev Lowry (Kirbyville), Sarah Marshall (Springfield), Jerry McDonald (Carthage), Sonny Meyers, Jr. (St. Charles), Ed Monje (Rolla), Ken O'Day (Ballwin), David Oswald (Webster Groves), Dixie Ousley (Kansas City), Braxton Payne (St. Louis), Mindy Petty (Liberty), R. Kent Pratt (Joplin), Michele Price (Kansas City), Trevor Pulley (Bloomfield), John Rahija (Grain Valley), Rory Reynolds (St. Peters), Greg Riggs (Poplar Bluff), Angela Roberts (Clarkton), Melissa Robinson (St. Peters), Scott Scheib (Oregon), Paul Scovill (St. Louis), Theresa Setzer (Republic), Kelly Shearrer (Poplar Bluff), Chuck Sierks (Rock Port), Tammie Spencer (Gower), Patricia Steele (St. Louis), Greg Stephenson (Springfield), Mary Kay Stoneking (Jackson), Mildred Taylor-Myers (Florissant), David Thompson (Independence), Gina Vemer (Columbia), Cathy Viets (Stover), Amy Wallace (Joplin), Dixie Wescott (Blue Springs), Andy Williams (Sedalia), Nancy Willig (Lexington), Angie Wise (Crane), Cindy Wilson (Buffalo).

2013 Volleyball - Championship Officials: Cathy Viets (Stover) - Officials Coordinator, Don Gard (Independence), Sammy Lawson (Jackson), Shannon Loso (Ballwin), Sarah Marshall (Springfield), Dixie Ousley (Kansas City), Greg Riggs (Poplar Bluff), Shannon Shafer (Florissant), Andrew Williams (Sedalia).

2013 Volleyball - Championship Lines Judges: Teresa Arthur (Houston), Victor Benton (Sedalia), Susan Harvey (Ballwin), David Kram (Odessa), Jerry McDonald (Carthage), Braxton Payne (St. Louis), Trevor Pulley (Bloomfield), Cindy Wilson (Buffalo).

2014

13th Annual MSHSAA Sportsmanship Summit



August 9

**Francis Howell Central
High School**



MSHSAA
1 North Keene St.
PO Box 1328
Columbia, MO 65205-1328

Nonprofit Org.
U.S. POSTAGE
PAID
COLUMBIA, MO
Permit 5

Routing Report

This routing report is provided to assist principals and athletic directors in ensuring that the *MSHSAA Journal* is seen by all necessary school personnel. Each individual should check the appropriate box after having read the *Journal* and pass it on to the next individual on the list or return it to the athletic administrator.

- | | |
|--|---|
| <input type="checkbox"/> Athletic Director | <input type="checkbox"/> Girls Tennis Coach |
| <input type="checkbox"/> Baseball Coach | <input type="checkbox"/> Boys Tennis Coach |
| <input type="checkbox"/> Girls Basketball Coach | <input type="checkbox"/> Girls Track & Field Coach |
| <input type="checkbox"/> Boys Basketball Coach | <input type="checkbox"/> Boys Track & Field Coach |
| <input type="checkbox"/> Girls Cross Country Coach | <input type="checkbox"/> Girls Volleyball Coach |
| <input type="checkbox"/> Boys Cross Country Coach | <input type="checkbox"/> Boys Volleyball Coach |
| <input type="checkbox"/> Football Coach | <input type="checkbox"/> Wrestling Coach |
| <input type="checkbox"/> Boys Golf Coach | <input type="checkbox"/> Cheerleading Sponsor |
| <input type="checkbox"/> Girls Golf Coach | <input type="checkbox"/> Band/Music Director |
| <input type="checkbox"/> Girls Soccer Coach | <input type="checkbox"/> Speech and Debate Sponsor |
| <input type="checkbox"/> Boys Soccer Coach | <input type="checkbox"/> Academic Competition Sponsor |
| <input type="checkbox"/> Softball Coach | <input type="checkbox"/> Other: _____ |
| <input type="checkbox"/> Girls Swimming Coach | <input type="checkbox"/> Other: _____ |
| <input type="checkbox"/> Boys Swimming Coach | <input type="checkbox"/> Other: _____ |