



Percussion Specifications

2024

All percussion events will take place in the Sinquefield Music Center (SMC).

Instruments Provided

All instruments have been inspected by the University of Missouri percussion faculty and staff and are in excellent condition. Equipment will be inspected throughout the event. MU percussion students will be monitoring these rooms and can assist with minor adjustments as needed throughout the day.

SMC 130 – 6’ entrance doors

Bass Drum
Chimes
Timpani (32”, 29”, 26”, 23”)
4.3 marimba (low A)
4.6 marimba (low E)
5.0 marimba (low C)
Xylophone
Vibraphone – Pearl Adams with working motor, extension cord provided
Glockenspiel
Tam-Tam

Sheryl Crow Hall (SMC 132) - 6’ entrance doors

Bass Drum
Chimes
Timpani (32”, 29”, 26”, 23”)
4.3 marimba (low A)
5.0 marimba (low C)
Xylophone
Vibraphone – Pearl Adams with working motor, extension cord provided
Glockenspiel
Tam-Tam

SMC 181 – 3’9” entrance doors

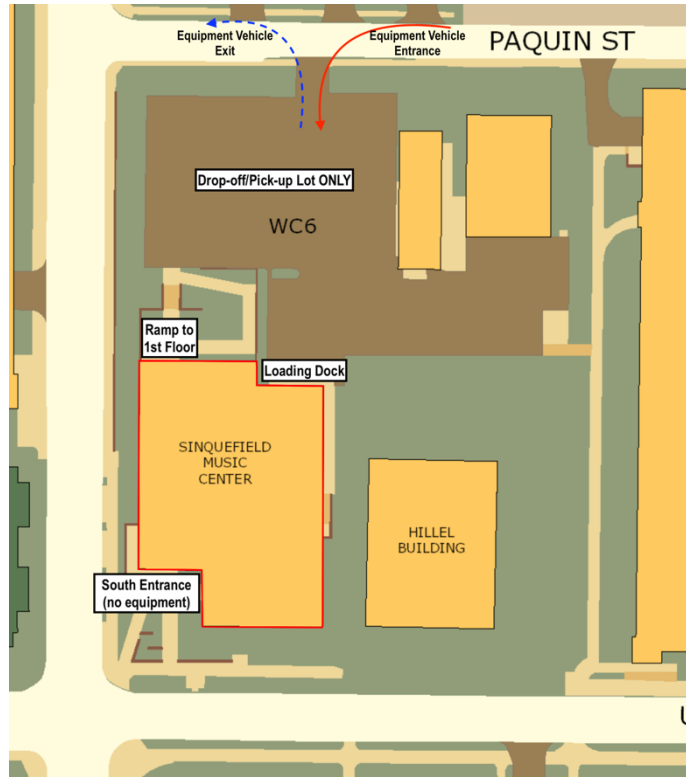
5.0 marimba (low C)

Photos of all instruments can be viewed at:

[Sinquefield Music Center Percussion Photos](#)

Building Access

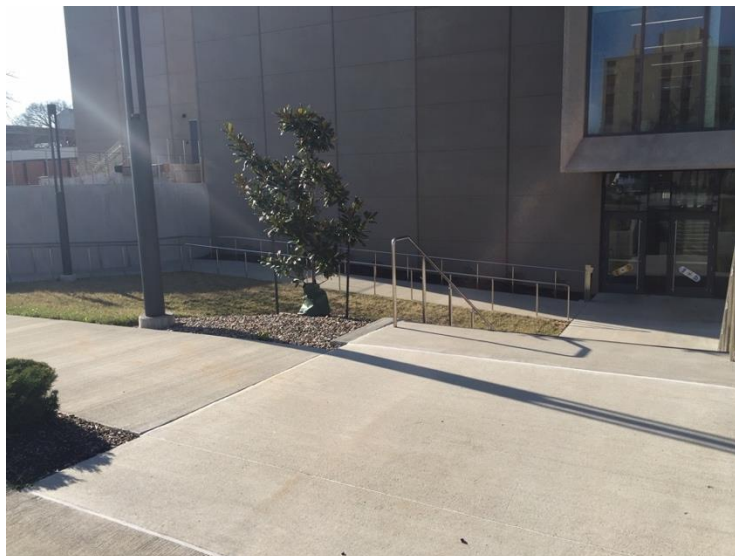
If you choose to bring your own equipment, all equipment must be unloaded and loaded in parking lot WC-6 to the north of the Sinquefield Music Center. Drivers should carefully read and follow the Bus Directions and Parking – Percussion document for traffic flow details.



There are two options for entrance to SMC which may be selected based on your equipment and vehicle specifications:

Option 1 – 1st Floor Ramp

Equipment may be wheeled down the ramp from the west corner of the parking lot to the north building entrance on the first floor. These doors are 38" wide and will accommodate 32" timpani, but will not accommodate an unassembled 5.0 marimba.





Option 2 – 2nd Floor Loading Dock

The loading dock area is located on the east side of the parking lot and provides access to the 2nd floor. The box truck dock is 39.5” tall and the small van dock is 22.5” tall. An elevator built to accommodate all instruments can be utilized to reach the performance areas on the 1st floor.

