

Missouri State High School  
Activities Association

# Journal



## Departments

Questions & Answers .....	1
News.....	2-10
Winter Athletics.....	11-13
Activities .....	14-16
Board of Directors.....	17-19

## Executive Staff

### DR. KERWIN URHAHN

#### *Executive Director*

Eligibility rulings, transfers, Constitution and By-Laws interpretations, budget and finance, insurance, litigation, legislative liaison, school classification, enrollments.

### STACY SCHROEDER

#### *Assoc. Executive Director*

Swimming and diving, Scholar Bowl, Transfers (hardships & waivers), personnel, MSHSAA Leadership School program, eligibility.

### DAVINE DAVIS

#### *Asst. Executive Director*

Music, volleyball, cheerleading, dance, performing groups, Transfers (foreign exchange/international students), sanctions, eligibility.

### KEVIN GARNER

#### *Asst. Executive Director*

Basketball, soccer, transfers, athletic directors liaison, waivers, eligibility.

### DON MAURER

#### *Asst. Executive Director*

Cross county, track & field, speech and debate, eligibility.

### GREG STAHL

#### *Asst. Executive Director*

Football, golf, wrestling, eligibility.

### KENNY SEIFERT

#### *Asst. Executive Director*

Officials coordinator, officials' registration, officials' rules meetings, special reports, tennis, eligibility.

### TODD ZELL

#### *Asst. Executive Director*

Baseball, softball, eligibility, sportsmanship programs & Summit, student services, Why We Play.

### CRAIG LONG

#### *Chief Financial Officer*

Budget and finance, vendor contracts and bids, advertising, corporate partners, awards, billing, buildings and grounds.

### JASON WEST

#### *Communications Director*

Publications, media and public relations, television and radio rights, web site maintenance, records, statistics, Distinguished Service Awards, Keller Awards, Scholastic Achievement Awards, Traditions.

## December 2016 (vol. 81, no. 2)

- The MSHSAA Journal is published four times per year by the Missouri State High School Activities Association.
- © 2016 MSHSAA, all rights reserved.

The Journal is available free on the Association website, [www.mshsaa.org](http://www.mshsaa.org).

1 N. Keene St.  
P.O. Box 1328  
Columbia, MO  
65205-1328

Phone: (573) 875-4880  
Fax: (573) 875-1450  
email@mshsaa.org

## Eligibility Rulings

All official eligibility opinions shall be in writing and shall bear the signature of the executive director. Verbal rulings are not official. Principals are reminded that correspondence concerning eligibility rulings, annual eligibility lists, applications for waiver of the transfer rule, hardship transfers and sanction forms, must be signed by the principal for consideration by the MSHSAA.

# Missouri State High School Activities Association



## 2016-17 Board of Directors



**Eric Churchwell, Pres.**  
Northeast District  
Superintendent  
Palmyra School  
Term Expires 2020



**Brett Soden, V.P.**  
Southwest District  
Principal  
Strafford HS  
Term Expires 2019



**Dr. Mark Beem**  
Central District  
Superintendent  
Hickory County  
Term Expires 2017



**Toni Hill**  
At-Large Region 2  
Superintendent  
Bloomfield Schools  
Term Expires 2017



**Chris Wilson**  
Southeast District  
Superintendent  
Kennett Schools  
Term Expires 2019



**Mark Linneman**  
St. Louis District  
Athletic Director  
Lutheran South HS  
Term Expires 2017



**Corey Johnson**  
At-Large Region 1  
Athletic Director  
Hazelwood East  
Term Expires 2019



**Travis Dittmore**  
Northwest District  
Superintendent  
DeKalb  
Term Expires 2020



**Jim Finley**  
Kansas City District  
Superintendent  
Blue Springs Schools  
Term Expires 2018



**Dr. Jennifer Schmidt**  
South Central District  
Principal  
Sullivan HS  
Term Expires 2018

## Mission Statement

"The MSHSAA promotes the value of participation, sportsmanship, team play, and personal excellence to develop citizens who make positive contributions to their community and support the democratic principles of our state and nation."

## Contact Info.

### MSHSAA

1 N. Keene St., PO Box 1328  
Columbia, MO 65205  
(573) 875-4880  
Fax (573) 875-1450  
[www.mshsaa.org](http://www.mshsaa.org)  
email@mshsaa.org

**Email Policy:** Due to the high volume of email messages received by the Association, an expedited personal response may not always be possible. The MSHSAA staff will respond first to more traditional means of communication such as telephone calls, written correspondence and faxes. The MSHSAA office can be reached at (573) 875-4880 during regular office hours. As time permits, staff will reply to email messages that include the sender's complete name, address and phone number. Questions regarding student eligibility or specific MSHSAA by-laws should first be directed to your local school administrator. By Board policy, our staff is not permitted to answer specific eligibility inquiries via email, and any follow-up questions to the MSHSAA should be done via telephone or written correspondence.



Proud Member  
National Federation of State High  
School Associations



The following are questions and answers pertaining to the MSHSAA Constitution and By-Laws and/or MSHSAA Board of Directors policy. These are provided as an aid in interpreting the rules and regulations which MSHSAA member schools have adopted. If you have a specific area and/or question which you would like explained, contact Dr. Kerwin Urhahn, MSHSAA executive director. Your attention is called to the fact questions and answers regarding interpretations of the MSHSAA Constitution and By-Laws appear following the Constitution Article or By-Law they relate to in the MSHSAA Official Handbook.

**Question:** May our high school basketball team scrimmage against an area junior college team or against a local city league team comprised of high school age players?

**Answer:** No in both cases. A school team may compete only against teams representing an MSHSAA member high school or teams from schools that are members of a like state association. The only exception to this would be an alumni game when conducted in accord with provisions of By-Law 3.12. This restriction applies to so-called scrimmages as well as to games. (By-Law 1.1)

**Question:** We have a person who lives in our community who has been involved in cheerleading for many years but has never attended a college/university. Can this person serve as our head cheerleading coach?

**Answer:** Yes. The standards for athletic coaches do not apply to cheerleading and dance team coaches. Any individual, however, hired to be a school cheerleading coach who does not possess a valid professional teaching certificate must satisfactorily complete an MSHSAA approved coaches education program and sports first aid. This is a prerequisite for approval to serve as a school cheerleading coach at any level at any MSHSAA member school in a subsequent school year. (By-Law 3.1)

**Question:** Do students participating in interscholastic competitive/evaluative music and speech activities have to meet the MSHSAA minimum essential student eligibility requirements?

**Answer:** Yes. Some have assumed that since these activities are generally a direct outgrowth of curricular programs the academic eligibility standards would not apply. As long as a student is limited to participating in a class setting during the regularly scheduled school day, that assumption is correct. However, music and speech activities that are conducted outside the regularly scheduled school day are considered to be extra-curricular in nature. Any extra-curricular competitive/evaluative music or speech event that involves students from two or more schools is considered to be an interscholastic event. Students participating in competitive/evaluative music or speech events must meet the MSHSAA minimum essential student eligibility requirements. This would not apply to events that are not competitive or evaluative, such as a parade that is not judged. (By-Laws 2.1 and 4.1)

**Question:** Our school uses NovaNET for credit recovery, remedial and enhancement. Credit earned will be placed on the student's transcript and count toward graduation. I would like to know if courses through NovaNET could also count toward a student's eligibility?

**Answer:** A course through NovaNET could count toward a student's academic eligibility under these conditions:

1. The student is doing the work through the school.
2. The work is all being done at a designated school site.
3. Credit must be placed on the student's transcript no later than the close of the semester in which the work was started. (By-Law 2.3)

**Question:** We have a student who is academically ineligible the first semester. Our first semester ends on January 19 and the second semester begins on January 22. We have a basketball game scheduled for Saturday, January 20. When may she begin competing in interscholastic basketball contests?

**Answer:** In accord with MSHSAA By-Law 2.3.10, if this student meets the academic requirement at the close of the first semester, she becomes eligible the fifth day classes are attended the second semester. In this specific case, she would become eligible to participate in interscholastic contests as of Friday, January 26.

Conversely, a student who is eligible the first semester but who fails to pass courses offering 3.00 units of credit or 80% of the maximum allowable credit whichever is greater that semester may compete until the fifth day of classes of the second semester. Using the semester dates above, a student in this situation would become ineligible as of Friday, January 26. (Grades posted later would not mitigate the use of an ineligible player after January 26.)

*Exception: If an interscholastic contests is played before the formal opening of school and a student has become academically eligible for the fall semester and is eligible in all other respects he/she may be eligible to participate under this provision provided the student is properly enrolled in the member school. (By-Laws 2.3.10 and 2.3.11)*

**Question:** Our school just won the Class 2 State Softball Championship. Our Booster Club would like to donate money to our school to enable the school to purchase a state championship commemorative ring. Is this permissible under the Amateur and Awards Requirement?

**Answer:** Yes. The Amateur and Awards Requirement does permit the school to purchase an item of commemorative jewelry for each team member to recognize a specific team accomplishment. It should be noted that only the school may purchase the item. Therefore, the Booster Club must donate the funds directly to the school for appropriate use as determined by the principal. (By-Law 3.6.1)

**Question:** May a student participate in a non-school sponsored free throw contest during a season he or she is representing his or her school in the sport of basketball or in pass, punt and kick contests during a season he is representing his school in the sport of football?

**Answer:** Yes. The MSHSAA Board of Directors interprets By-Law 3.13 as not restricting participation in non-school sponsored contests involving individual skills of a team sport such as free throw contests or pass, punt, and kick contests. This interpretation is based on the fact these activities involve only individual skills of a team sport and, as such, would not in themselves constitute a sport per se by normal definition. (By-Law 3.13)

## Interscholastic Scrimmages Not Permitted Before First Possible Contest

By-Law 3.16.5 defines a game as any organized play between teams not of the same school. Whether or not officials are hired, admission charged, etc., are not factors in determining whether the play constitutes a game. So-called "scrimmage games" cannot be played before the date of the first allowable contest and such competition must be counted as a game on the school's schedule. Also, they may be played only if the school has not scheduled the maximum number of games allowed. This By-Law applies to all sports and all sport seasons.

The only exception to this is a new allowance for one Pre-Season Interscholastic Scrimmage in team sports (baseball, basketball, football, soccer, softball and volleyball) under certain defined conditions listed in By-Law 3.16.6 and Board Policy 25.

## MSHSAA Member School Status Changes

<i>The MSHSAA welcomes the following school as a new member for the 2016-2017 school year:</i>	<i>It should be noted that the following school is no longer a member of MSHSAA as of the 2016-2017 school year:</i>
Gateway Science Academy Charter High School	Southwest Early College Campus High School

<i>The following school's name has been changed for the 2016-17 school year:</i>	
<b>Old Name</b>	<b>New Name</b>
African Centered College Preparatory High School	Souteast High School

<i>It should be noted that the following schools have changed their membership status with MSHSAA for the 2016-17 school year:</i>	
Arcadia Valley High School	7-12 member changed to a 9-12 member and an affiliate junior high registration
Carrollton Junior High	dropped their separate junior high membership and became a 7-12 member with Carrollton High School
Festus Middle School	dropped their separate membership and became a 7-12 member with Festus High School
Hannibal Middle School	dropped their separate membership and became a 7-12 member with Hannibal High School
Hillsboro Junior High School	dropped their separate junior high membership and became a 7-12 member with Hillsboro High School
Jefferson (Conception Jct.) High School	changed from a 9-12 full member and affiliate junior high registration to a 7-12 full member
John A. Evans Middle School	dropped their separate junior high membership and became a 7-12 member with Potosi High School
Malta Bend High School	7-12 member changed to a 9-12 member and an affiliate junior high registration
Missouri School for the Deaf High School	7-12 member changed to a 9-12 member and an affiliate junior high registration
Montrose High School	dropped affiliate junior high registration to become 7-12 full member
Naylor High School	7-12 member changed to a 9-12 member and an affiliate junior high registration
Osage Trail Middle School	dropped their separate junior high membership and became a 7-12 member with Fort Osage High School
School of the Ozarks High School	7-12 member changed to a 9-12 member and an affiliate junior high registration
Sullivan Middle School	dropped their separate junior high membership and became a 7-12 member with Sullivan High School
Troy Buchanan High School	7-12 member changed to a 9-12 member and an affiliate junior high registration
Union Star High School	7-12 member changed to a 9-12 member and an affiliate junior high registration

## MSHSAA Member School Status Changes

<i>The following schools are joining as Home School Association Teams for the 2016-17 school year:</i>		
<b>School</b>	<b>Town</b>	<b>Sports/Activities Registered For</b>
Central Panthers (Sr. High)	High Ridge	11-Man Football
Lighthouse Christian (Jr. High)	Walnut Grove	Boys and Girls Basketball, Cheerleading, 11-Man Football, and Boys and Girls Track
Lighthouse Christian (Sr. High)	Walnut Grove	Boys and Girls Basketball, Cheerleading, 11-Man Football, and Boys and Girls Track
Rush (Sr. High)	Nixa	Boys and Girls Basketball and Girls Volleyball
St. Louis Christian (Sr. High)	Washington	Boys and Girls Basketball, Boys and Girls Cross Country, Boys Golf, Boys and Girls Soccer, and Girls Volleyball
St. Louis Christian (Sr. High)	St. Ann	Boys Basketball and Girls Volleyball
St. Louis Patriots (Sr. High)	St. Charles	Baseball
Veracity (Sr. High)	Aurora	Girls Volleyball

## MSHSAA Affiliate Registered Schools

<i>The following schools are joining as Home School Association Teams for the 2016-17 school year:</i>		
<b>School</b>	<b>Town</b>	<b>Sports/Activities Registered For</b>
Academie Lafayette Junior High School	Kansas City	Boys and Girls Basketball, Boys and Girls Cross Country, Boys and Girls Soccer, Boys and Girls Track, and Girls Volleyball
Alton Junior High School	Alton	Baseball, Boys and Girls Basketball, Cheerleading, Music, Scholar Bowl, Speech, and Girls Softball
Arcadia Valley Junior High School	Ironton	Baseball, Boys and Girls Basketball, Cheerleading, Boys and Girls Cross Country, Music, Scholar Bowl, Boys and Girls Track, and Girls Volleyball

## MSHSAA Affiliate Registered Schools (cont'd)

Avilla Junior High School	Avilla	Boys and Girls Basketball, Girls Volleyball and the nonhost school in co-ops for 11-Man Football and Boys and Girls Track
Ballard Junior High School	Butler	Boys and Girls Basketball
Barstow Junior High School	Kansas City	Boys and Girls Cross Country, Music, Boys and Girls Track
Bell City Junior High School	Bell City	Baseball, Boys Basketball, Cheerleading, Music, Boys and Girls Track, and Girls Volleyball
Bishop Hogan Memorial Junior High School	Chillicothe	Nonhost school in co-ops for 11-Man Football, Girls Softball, Boys and Girls Track, and Girls Volleyball
Bismarck Junior High School	Bismarck	Baseball, Boys Basketball, Cheerleading, Music, Scholar Bowl, and Girls Volleyball
Bronaugh Junior High School	Bronaugh	Boys and Girls Basketball, Cheerleading, Music, Scholar Bowl, Boys and Girls Track and the nonhost school in a co-op for 11-Man Football
Btokeside Charter Junior High School	Kansas City	Boys and Girls Basketball, Boys and Girls Track, and Girls Volleyball
Bunker Junior High School	Bunker	Baseball, Boys and Girls Basketball, Cheerleading, Boys and Girls Cross Country, Scholar Bowl, and Girls Volleyball
Callao Junior High School	Callao	Nonhost school in co-ops for boys and Girls Basketball and Boys and Girls Track
Centerville Junior High School	Centerville	Boys Basketball and Girls Volleyball
Chaffee Junior High School	Chaffee	Boys and Girls Basketball, Cheerleading, 11-Man Football, Music, and Boys and Girls Track
Christian Academy of Greater St. Louis High School	St. Louis	Baseball, Boys and Girls Basketball, Boys and Girls Soccer, Speech, Boys and Girls Track, and Girls Volleyball
Christian Fellowship Junior High School	Columbia	Boys Basketball, Music, and Boys and Girls Track
Christian Fellowship High School	Columbia	Boys and Girls Basketball, Music, Boys and Girls Soccer, Speech, Boys and Girls Track, and Girls Volleyball
Climax Springs Junior High School	Climax Springs	Boys and Girls Basketball and Cheerleading
Community Christian Academy High School	Barnhart	Boys and Girls Basketball
Cooter Junior High School	Cooter	Baseball, Boys Basketball, Cheerleading, Music, and Girls Volleyball
Dadeville Junior High School	Dadeville	Boys and Girls Basketball
Davis Junior High School	Clinton	Nonhost school in co-ops for Boys and Girls Basketball, Boys and Girls Cross Country, 11-Man Football, and Boys and Girls Track
DeLaSalle Education Center High School	Kansas City	Boys Basketball
Delta Junior High School	Delta	Baseball, Boys and Girls Basketball, Cheerleading, Boys and Girls Cross Country, and Music
Eagle Ridge Christian High School	Cape Girardeau	Boys and Girls Basketball, Boys Soccer, Boys and Girls Track, and Girls Volleyball
El Dorado Christian High School	El Dorado Springs	Boys and Girls Basketball and Boys and Girls Track
Ellington Junior High School	Ellington	Baseball, Boys and Girls Basketball, Cheerleading, Boys and Girls Cross Country, Music, Scholar Bowl, Girls Softball, and Girls Volleyball
Eminence Junior High School	Eminence	Baseball, Boys Basketball, Cheerleading, Boys Cross Country, Music, Girls Softball, and Girls Volleyball
Everton Junior High School	Everton	Boys and Girls Basketball, Boys and Girls Track, Girls Volleyball, and the nonhost school in co-ops for Cheerleading and 11-Man Football
Ewing Marion Kauffman Junior High School	Kansas City	Boys and Girls Basketball, Cheerleading, Boys and Girls Cross Country, Boys and Girls Soccer, Speech, Boys and Girls Track, and Girls Volleyball
Ewing Marion Kauffman High School	Kansas City	Boys and Girls Basketball, Cheerleading, Boys and Girls Cross Country, Speech, Boys and Girls Track, and Girls Volleyball
Fairview Junior High School	West Plains	Boys and Girls Basketball, Boys and Girls Cross Country, Scholar Bowl, and Boys and Girls Track
Faith Lutheran Junior High School	Kirksville	Nonhost school in co-ops for Baseball, Boys and Girls Basketball, Cheerleading, Boys and Girls Cross Country, Girls Golf, Music, Scholar Bowl, Boys and Girls Soccer, Speech, Girls Softball, Boys and Girls Tennis, Boys and Girls Track, Boys and Girls Volleyball, and Wrestling
Frontier School of Excellence Jr. High School	Kansas City	Boys Basketball and Boys Soccer
Gideon Junior High School	Gideon	Baseball, Boys Basketball, Cheerleading, and Girls Volleyball
Glenwood Junior High School	West Plains	Chess and the nonhost school in co-op for 11-Man Football
Greenwood Junior High School	Springfield	Boys and Girls Basketball, Cheerleading, and Boys and Girls Track
Halfway Junior High School	Halfway	Boys and Girls Basketball, Cheerleading, Scholar Bowl, and Boys and Girls Track

**MSHSAA Affiliate Registered Schools (cont'd)**

Heartland Christian Junior High School	Belton	Scholar Bowl
Heartland Christian High School	Belton	Scholar Bowl
High Point Junior High School	High Point	Nonhost school in co-ops for Boys Cross Country, 11-Man Football, Boys and Girls Track, and Wrestling
Howell Valley Junior High School	West Plains	Boys and Girls Basketball, Boys and Girls Cross Country, Music, Boys and Girls Track, Girls Volleyball, and the nonhost school in a co-op for 11-Man Football
Humansville Junior High School	Humansville	Boys and Girls Basketball, Cheerleading, Boys and Girls Cross Country, Boys and Girls Track
Hume Junior High School	Hume	Boys and Girls Basketball, Cheerleading, and the nonhost school in a co-op for 11-Man Football
Hurley Junior High School	Hurley	Baseball, Boys and Girls Basketball, Cheerleading, Boys and Girls Cross Country, Music, and Girls Volleyball
Immaculate Conception Junior High School	Jackson	Nonhost school in co-ops for Boys and Girls Cross Country, 11-Man Football, Boys and Girls Track, and Wrestling
Immaculate Conception Junior High School	Jefferson City	Boys and Girls Track
Immaculate Conception Junior High School	Montgomery City	Nonhost school in co-ops for Boys and Girls Basketball, Cheerleading, Boys and Girls Cross Country, 11-Man Football, Girls Softball, Boys and Girls Track, and Girls Volleyball
Immaculate Conception Junior High School	Old Monroe	Nonhost school in co-ops for Baseball, Girls Basketball, Cheerleading, Girls Cross Country, 11-Man Football, Girls Softball, Boys and Girls Track, Girls Volleyball, and Wrestling
Immanuel Lutheran Junior High School	Perryville	Nonhost school in co-ops for Boys and Girls Cross Country, 11-Man Football, Music, and Boys and Girls Track
Immanuel Lutheran Junior High School	Rosebud	Nonhost school in co-ops for Boys and Girls Cross Country, Boys and Girls Track, and Wrestling
Joel E. Barber Junior High School	Lebanon	Baseball, Boys and Girls Basketball, Cheerleading, Boys and Girls Cross Country, 11-Man Football, Boys and Girls Track, Girls Volleyball, and Wrestling
Junction Hill Junior High School	West Plains	Boys and Girls Basketball, Boys and Girls Cross Country, and Boys and Girls Track
Kelso Junior High School	Benton	Nonhost school in co-ops for 11-Man Football and Boys and Girls Track
Kingdom Christian Academy Jr. High School	Fulton	Boys Cross Country, Boys and Girls Track, and Girls Volleyball
Kingdom Christian Academy High School	Fulton	Boys and Girls Track and Girls Volleyball
Kingston Junior High School	Cadet	Baseball, Boys and Girls Basketball, Boys and Girls Cross Country, Scholar Bowl, Girls Volleyball, and the nonhost school in a co-op for 11-Man Football
Kingston Junior High School	Kingston	Nonhost school in co-ops for 11-Man Football, Girls Softball, and Boys and Girls Track
KIPP Endeavor Junior High School	Kansas City	Boys and Girls Basketball, Boys and Girls Soccer, Boys and Girls Track, and Girls Volleyball
Kirbyville Junior High School	Kirbyville	Baseball, Boys and Girls Basketball, Cheerleading, and Girls Volleyball
Latham Junior High School	Latham	Nonhost school in co-ops for 11-Man Football and Boys and Girls Track
Lee Tolbert Academy Junior High School	Kansas City	Boys and Girls Basketball, Boys and Girls Track, and Girls Volleyball
Leopold Junior High School	Leopold	Boys Basketball and Girls Volleyball
Lesterville Junior High School	Lesterville	Baseball, Boys and Girls Basketball, and Girls Volleyball
Liberty Christian Academy High School	Wright City	Boys and Girls Basketball
Lighthouse Preparatory Academy High School	Jefferson City	Boys and Girls Cross Country, Girls Softball, and Boys and Girls Swimming
Logos High School	St. Louis	Baseball, Boys Basketball, Boys Soccer and Girls Volleyball
Lonedell Junior High School	Lonedell	Nonhost school in co-ops for Boys and Girls Track
Lutheran School Assn. Junior High School	Cole Camp	Nonhost school in a co-ops for 11-Man Football, Boys Soccer, and Boys and Girls Track
Malta Bend Junior High School	Malta Bend	Boys and Girls Basketball, Boys and Girls Cross Country, Scholar Bowl, Boys and Girls Track, and the nonhost school in co-ops for 11-Man Football and Girls Volleyball
Mark Twain Junior High School	Rueter	Nonhost school in co-ops for Baseball, 11-Man Football, and Boys and Girls Softball
Martin Luther Junior High School	Joplin	Nonhost school in co-ops for Boys and Girls Basketball, Cheerleading, Boys and Girls Cross Country, Boys and Girls Track, and Girls Volleyball
Mary Immaculate Catholic Junior High School	Kirksville	Nonhost school in co-ops for Boys and Girls Basketball, Boys and Girls Cross Country, 11-Man Football, Scholar Bowl, Girls Softball, Boys and Girls Track, Girls Volleyball, and Wrestling
Middle Grove Junior High School	Madison	Nonhost school in co-ops for Boys and Girls Basketball, Scholar Bowl, and Boys and Girls Track

**MSHSAA Affiliate Registered Schools (cont'd)**

Mirabile Junior High School	Polo	Nonhost school in co-ops for 11-Man Football, Girls Softball, and Boys and Girls Track
Missouri Acad. of Science, Mathematics & Computing H.S.	Maryville	Scholar Bowl
Missouri School for the Deaf Junior High Sch.	Fulton	Boys and Girls Basketball, Cheerleading, Boys and Girls Cross Country, and Boys and Girls Track
Naylor Junior High School	Naylor	Baseball, Boys and Girls Basketball, Cheerleading, and Girls Softball
Nell Holcomb Junior High School	Cape Girardeau	Music and the nonhost school in co-ops for Boys and Girls Cross Country, 11-Man Football, Boys and Girls Track, and Wrestling
Newburg Junior High School	Newburg	Boys and Girls Basketball
Niangua Junior High School	Niangua	Boys and Girls Basketball, Cheerleading, Boys and Girls Cross Country, Music, and Girls Volleyball
North County Christian High School	Florissant	Baseball, Boys and Girls Basketball, Cheerleading, Music, Boys and Girls Soccer, Boys and Girls Track, and Girls Volleyball
North Pemiscot Junior High School	Wardell	Baseball, Boys Basketball, Cheerleading, and Girls Volleyball
Northland Christian Junior High School	Kansas City	Boys and Girls Track
Oak Ridge Junior High School	Oak Ridge	Boys and Girls Basketball, Cheerleading, Boys and Girls Cross Country, Music, and Girls Volleyball
Ozanam High School	Kansas City	Boys Basketball, Boys and Girls Cross Country, and Boys and Girls Track
Pemiscot County R-3 Junior High School	Caruthersville	Baseball, Boys Basketball, Cheerleading, Girls Volleyball, and the nonhost school in a co-op for 11-Man Football
Perry Christian Academy Junior High School	Perry	Nonhost school in a co-op for 11-Man Football
Plaza Heights Christian Academy Jr. High Sch.	Blue Springs	Boys and Girls Cross Country
Plaza Heights Christian Academy High School	Blue Springs	Boys Basketball and Boys and Girls Cross Country
Providence Classical Academy	St. Louis	Boys and Girls Basketball, Boys and Girls Cross Country, and Girls Volleyball
Renick Junior High School	Renick	Boys and Girls Basketball, Cheerleading, Music, and Boys and Girls Track
Richards Junior High School	West Plains	Music, Boys and Girls Cross Country and the nonhost school in co-op for 11-Man Football
Richland Junior High School	Essex	Baseball, Boys Basketball, Cheerleading and Volleyball
Richwoods Junior High School	Richwoods	Boys and Girls Basketball, Music, and Girls Volleyball
Risco Junior High School	Risco	Baseball, Boys Basketball, Cheerleading, and Girls Volleyball
Riverview Christian High School	Forsyth	Boys and Girls Basketball
Runnymede High School	Walnut Grove	Wrestling
St. Andrew Catholic Junior High School	Tipton	Nonhost school in a co-op for 11-Man Football
St. Augustine Junior High School	Kelso	Nonhost school in co-ops for Baseball, Boys and Girls Cross Country, 11-Man Football, and Boys and Girls Track
St. Brendan Junior High School	Mexico	Boys and Girls Basketball, Cheerleading, and the nonhost School in co-ops for Boys and Girls Cross Country, 11-Man Football, Boys and Girls Track, Girls Volleyball and Wrestling
St. Clement Junior High School	Bowling Green	Nonhost school in co-ops for Boys and Girls Basketball, Cheerleading, Boys and Girls Cross Country, 11-Man Football, Girls Softball, Boys and Girls Track, and Girls Volleyball
St. Denis Junior High School	Benton	Nonhost school in co-ops for 8-Man Football and Boys and Girls Track
St. Eustachius Junior High School	Portageville	Nonhost school in co-ops for Baseball, 11-Man Football, and Girls Volleyball
St. Francis Xavier Junior High School	St. Joseph	Boys and Girls Cross Country and Boys and Girls Track
St. George Junior High School	Hermann	Nonhost school in co-ops for Boys and Girls Cross Country and Boys and Girls Track
St. Gregory Barbarigo High School	Maryville	Boys and Girls Basketball, Cheerleading, Boys and Girls Track, Girls Volleyball, and the nonhost school in co-ops for 11-Man Football and Wrestling
St. John's Lutheran Junior High School	Hannibal	Nonhost school in co-ops for Baseball, Boys and Girls Basketball, Cheerleading, Boys and Girls Cross Country, 11-Man Football, Boys and Girls Golf, music, Pom Pon/Dance, Winter Guard, Scholar Bowl, Boys and Girls Soccer, Speech, Boys and Girls Softball, Boys and Girls Swimming, Boys and Girls Tennis, Boys and Girls Track, Boys and Girls Volleyball and Wrestling
St. Joseph Catholic Junior High School	Farmington	Boys and Girls Basketball, Boys and Girls Soccer, and Girls Volleyball

**MSHSAA Affiliate Registered Schools (cont'd)**

St. Joseph Junior High School	Martinsburg	Boys and Girls Basketball, and the nonhost school in co-ops for 11-Man Football, Girls Softball, and Girls Track
St. Joseph Catholic Junior High School	Pilot Grove	Nonhost school in co-ops for Boys and Girls Basketball and Scholar Bowl
St. Joseph Junior High School	Salisbury	Boys and Girls Basketball, Cheerleading, Boys and Girls Cross Country, Music, Boys and Girls Track, and the nonhost school in co-ops for 11-Man Football and Girls Softball
St. Joseph Catholic Junior High School	Westphalia	Boys and Girls Track
St. Louis Christian Academy High School	St. Louis	Boys Basketball, Boys Soccer, Boys Track and Girls Volleyball
St. Louis College Prep Junior High School	St. Louis	Boys and Girls Basketball, Boys and Girls Cross Country, and Boys and Girls Track
St. Louis College Prep Senior High School	St. Louis	Boys and Girls Basketball, Cheerleading, Boys and Girls Cross Country, and Boys and Girls Track
St. Patrick Catholic Junior High School	Rolla	Nonhost school in co-ops for Boys and Girls Basketball, Boys and Girls Cross Country, 11-Man Football, Boys and Girls Track, and Girls Volleyball
St. Paul Lutheran Junior High School	Farmington	Nonhost school in co-ops for Boys and Girls Cross Country, 11-Man Football, Boys and Girls Golf, Boys and Girls Track, and Wrestling
St. Paul Lutheran Junior High School	Jackson	Music, nonhost school in co-ops for 11-Man Football and Wrestling
St. Paul Lutheran Junior High School	St. Joseph	Scholar Bowl
St. Paul Lutheran Junior High School	Stover	Nonhost school in co-ops for Boys Cross Country and Boys Track
St. Peter Catholic Junior High School	Marshall	Boys and Girls Basketball, Scholar Bowl, and the nonhost school in co-ops for 11-Man Football and Boys and Girls Track
St. Peter Junior High School	Jefferson City	Boys and Girls Track
St. Pius X Junior High School	Moberly	Boys and Girls Basketball, Cheerleading, Boys and Girls Cross Country, Music, Boys and Girls Track, and the nonhost school in co-ops for 11-Man Football and Girls Softball
St. Stanislaus Junior High School	Jefferson City	Boys and Girls Track
St. Teresa Junior High School	Campbell	Nonhost school in co-ops for Baseball, Boys and Girls Basketball, and Girls Volleyball
St. Vincent Junior High School	Perryville	Music
Saints Peter and Paul Junior High School	Boonville	Boys and Girls Basketball, Scholar Bowl, Girls Volleyball, and the nonhost school in co-ops for 11-Man Football, Boys and Girls Track, and Wrestling
School of the Ozarks Junior High School	Point Lookout	Boys and Girls Basketball, Chess, Boys and Girls Cross Country, Music, Scholar Bowl, Boys and Girls Track, and Girls Volleyball
Scott County Central Junior High School	Sikeston	Boys Basketball, Cheerleading, Music, and Scholar Bowl
Sheldon Junior High School	Sheldon	Boys and Girls Basketball and Boys and Girls Track
Shell Knob Junior High School	Shell Knob	Boys and Girls Basketball, Cheerleading, Music, Scholar Bowl, Boys and Girls Track, and Girls Volleyball
Skyline Junior High School	Norwood	Nonhost school in co-op for Girls Track and Girls Volleyball
Skyline Junior High School	Urbana	Baseball, Boys and Girls Basketball, Cheerleading, 11-Man Football, Scholar Bowl, Girls Softball, Boys and Girls Track, and Girls Volleyball
South Iron Junior High School	Annapolis	Baseball, Boys and Girls Basketball, Cheerleading, Boys and Girls Cross Country, and Girls Volleyball
Stoutland Junior High School	Stoutland	Boys and Girls Basketball
Strain-Japan Junior High School	Sullivan	Boys and Girls Track
Success Junior High School	Success	Boys Cross Country
Summersville Junior High School	Summersville	Baseball, Boys and Girls Basketball, Girls Softball, and Girls Volleyball
Summit Christian Academy Junior High School	Lee's Summit	Boys and Girls Basketball, Cheerleading, Boys and Girls Cross Country, 11-Man Football, Music, Boys and Girls Soccer, Speech, Boys and Girls Track, and Girls Volleyball
Sunrise Junior High School	DeSoto	Boys and Girls Basketball, Cheerleading, Scholar Bowl, Volleyball and the nonhost school in co-ops for 11-Man Football and Boys and Girls Track
Taneyville Junior High School	Taneyville	Nonhost school in co-ops for Baseball and 11-Man Football
Thomas Jefferson High School	Sunset Hills	Boys and Girls Basketball, Boys and Girls Soccer, and Boys and Girls Volleyball
Thomas Jefferson Ind. Day Junior High School	Joplin	Boys and Girls Basketball, Cheerleading, Boys and Girls Cross Country, Music, Scholar Bowl, Boys and Girls Track, and Girls Volleyball
Tower Grove Christian High School	St. Louis	Baseball, Boys and Girls Basketball, Cheerleading, Boys and Girls Soccer, Boys and Girls Track, and Girls Volleyball



## MSHSAA Affiliate Registered Schools (cont'd)

Trinity Lutheran Junior High School	Alma	Boys and Girls Basketball, Boys and Girls Track, Girls Volleyball, and the non-host school in a co-op for 11-Man Football
Trinity Lutheran Junior High School	Cape Girardeau	Music
Trinity Lutheran Junior High School	Freistatt	Nonhost school in co-ops for Boys and Girls Basketball, Cheerleading, 11-Man Football, Boys and Girls Track, and Girls Volleyball
Trinity Lutheran Junior High School	Jefferson City	Boys and Girls Track
Troy Middle School	Troy	Boys and Girls Basketball, Cheerleading, Boys and Girls Cross Country, 11-Man Football, Music, Pom Pon/Dance, Girls Softball, Boys and Girls Track, Girls Volleyball, Wrestling
Troy South Middle School	Moscow Mills	Boys and Girls Basketball, Cheerleading, Boys and Girls Cross Country, 11-Man Football, Music, Pom Pon/Dance, Girls Softball, Boys and Girls Track, Girls Volleyball, Wrestling
T.S. Hill Middle School	Dexter	Baseball, Boys and Girls Basketball, Cheerleading, Boys and Girls Cross Country, 11-Man Football, Music, Boys and Girls Track, Girls Volleyball, and Wrestling
Union Star Junior High School	Union Star	Boys and Girls Basketball, Music, Scholar Bowl, Boys and Girls Track, and the nonhost school in a co-op for 8-Man Football
United in Christ Lutheran Junior High School	Frohna	Music
Valley Junior High School	Caledonia	Boys and Girls Basketball, Music, and Girls Volleyball
Victory Academy High School	Seymour	Boys and Girls Basketball
Walnut Grove Junior High School	Walnut Grove	Boys and Girls Basketball
Weaubleau Junior High School	Weaubleau	Boys and Girls Basketball, Cheerleading, Boys and Girls Cross Country, Music, Scholar Bowl, and Boys and Girls Track
West St. Francois County Jr. High School	Park Hills	Baseball, Boys and Girls Basketball, Cheerleading, Music, Scholar Bowl, and Girls Volleyball
Westview Junior High School	Neosho	Boys and Girls Basketball and the nonhost school in co-ops for Boys and Girls Cross Country, 11-Man Football, and Boys and Girls Track
Westwood Baptist Academy High School	Poplar Bluff	Baseball, Boys and Girls Basketball, Boys and Girls Soccer, Girls Volleyball
Wheatland Junior High School	Wheatland	Boys and Girls Basketball, Boys and Girls Cross Country and Boys and Girls Track
Winona Junior High School	Winona	Baseball, Boys Basketball, Cheerleading, Boys and Girls Cross Country, Music, Scholar Bowl, Girls Softball, and Girls Volleyball
Zalma Junior High School	Zalma	Boys Basketball, Cheerleading, Boys and Girls Cross Country, Boys and Girls Track, and Girls Volleyball
Zion Lutheran Junior High School	Bunceton	Nonhost school in co-ops for Boys and Girls Basketball

## Appeals Committee

**Held August 17, 2016**

The Appeals Committee heard 12 cases and ruled as follows:

a. Denied appeals to grant unrestricted eligibility under provisions contained in MSHSAA By-Law 3.10.4.h, Hardship Application Transfer and granted restricted eligibility under Transfer Waiver, By-Law 3.10.4.i:

1. Francis Howell Central High School
2. Webster Groves High School
3. Liberty North High School
4. Westminster Christian Academy High School
5. DeSmet High School

b. Granted appeal for unrestricted eligibility under provisions contained in MSHSAA By-Law 3.10.4.h, Hardship Application Transfer:

1. Lafayette (Wildwood) High School
2. Fair Grove High School
3. Helias Catholic High School
4. Raymore-Peculiar High School
5. North Shelby High School
6. Joplin High School
7. Carrollton High School

## Appeals Committee

**Held August 31, 2016**

One case was reviewed and decided on the basis of documentation presented by the Associate Executive Director to the Appeals Committee:

a. Granted appeal for unrestricted eligibility under provisions contained in MSHSAA By-Law 3.10.4.h, Hardship Application Transfers:

1. Soldan International Studies High School

The Appeals Committee heard 11 cases and ruled as follows:

a. Granted appeals for unrestricted eligibility under provisions contained in MSHSAA By-Law 3.10.4.h, Hardship Application Transfers:

1. McCluer South-Berkeley High School
2. Bernie High School
3. Farmington High School
4. Cardinal Ritter High School

b. Denied appeals to grant unrestricted eligibility under provisions contained in MSHSAA By-Law 3.10.4.h, Hardship Transfer Applications and granted restricted eligibility under Transfer Waiver, By-Law 3.10.4.i:

1. Fulton High School
2. St. Mary's (St. Louis) High School
3. Lutheran South High School
4. The Fulton School at St. Albans High School
5. Cardinal Ritter High school

c. Denied appeals to grant unrestricted eligibility under provisions contained in MSHSAA By-Law 3.10.4.h, Hardship Transfer Applications (transfer deemed as being made for athletic reasons – no eligibility for 365 days):

1. Battle High School
2. Lutheran North High School

## MSHSAA Catastrophic Insurance and Successful Prevention Techniques

School administrators are reminded to be certain to file appropriate claims for potential catastrophic injuries. The current policy is presented by Mutual of Omaha. Coverage is an excess medical plan. For a more detailed description of the benefits of this policy, please refer to the summary sheet highlighting the benefits provided to all MSHSAA member schools in the August packet mailing. It should be noted that this plan does not include any liability coverage as it serves as medical only.

Along with securing the catastrophic medical coverage for their students, it is

imperative that school staffs have in place a solid risk management program. Facilities and equipment should be kept in good condition. Annual review of good risk management, standard operating procedures for injuries and first aid should occur with all staff. A continuing review of school policy for security, conduct of players, coaches and fans should occur.

Insurance will address the results of a situation. However, good planning and proper risk management are the only successful prevention techniques.

## Important Information About NCAA Initial-Eligibility Changes

If you would like to read about NCAA Requirements, or to see the specific core-course breakdown, please visit one of the following web sites:

[www.ncaa.org](http://www.ncaa.org)

[www.ncaaclearinghouse.net](http://www.ncaaclearinghouse.net)

Questions or comments about the new rules may be submitted to:

[academics@ncaa.org](mailto:academics@ncaa.org)

Colleges will only accept ACT scores received from the national ACT office.

## Length of Middle Level/Junior High Seasons

MSHSAA By-Law 3.29 permits flexible scheduling of middle level/junior high school sports seasons at any time during the school year to enable member schools to best utilize school facilities and coaching staffs.

The By-Law specifies that the sports seasons shall be 12 consecutive calendar weeks in length, beginning with the first organized practice with any part of a sports squad and ending with the last interscholastic contest in the sport concerned. It further provides that the sports season may be extended to a maximum of 14 consecutive calendar weeks in length whenever the Christmas/winter holiday period falls within the sports season. The sports season for 7th and 8th grade teams shall begin no earlier than the Monday of Standardized Calendar week Number Seven, and end with the last day of school in the spring.

Schools are reminded that a calendar week is interpreted as beginning with a Monday and ending with the following Sunday. Any part of a calendar week shall count as a full week. For example, if the junior high school basketball season culminates with a tournament which ends on a Tuesday, this entire calendar week would count as one of the 12-14 allowable weeks. In other words, a school could not have 12-14 weeks in addition to the tournament just because a season ended in the middle of a calendar week, in this case on Tuesday.

This provision for the scheduling of middle level/junior high school sports seasons has generally worked very well for member schools. However, from time to time, there has been some confusion in the application of this By-Law to the sport of basketball, particularly where a ninth grade student begins the season playing on a junior high school team and, at the end of the junior high season, moves up and plays as a member of a senior high school junior varsity or varsity team.

If a 9th grade basketball sports season is scheduled either concurrently with the senior high school season or so that it overlaps the beginning of the senior high school basketball season, individual ninth grade students may move up at the end of the junior high school season to play as a member of the senior high school junior varsity or varsity team. In such situations, the indi-

vidual student may not participate in more than the total number of games (quarters) and tournaments equal to that played by the high school team on which the student plays and may not participate in a total number of weeks that exceeds that of the senior high school season. A ninth grade student in the situation described above could participate in a maximum of 20 or 19 consecutive calendar weeks, based upon the classification of the high school, from the first practice date of the first team on which the ninth grade student plays to last contest (or practice) for the last team on which the ninth grade student plays. In either case (quarters and tournaments or length of season), once the maximum is reached, the student must discontinue participation in both practices and game competition.

Any ninth grade student that plays with seventh and eighth grade students on a junior high/middle school basketball team must begin his/her 20 or 19 consecutive calendar weeks length of season as of the first practice day of the seventh and eighth graders whether these ninth graders are competing in another sport at that time or decide for whatever reason to come out late for the junior high/middle school team. The ninth grade students may move up and play with the senior high team when the junior high/middle school season concludes, but these ninth graders are limited by 20 or 19 consecutive calendar weeks and the games (quarters) and tournament limits of their high school team. Once one of these limits is reached, the affected ninth grade student may no longer practice or compete with any school team. Ninth grade students may begin practice with the high school team on the first allowable high school practice date, but may not have practiced or competed with or against seventh and eighth graders earlier.

It is important all principals, athletic directors, and coaches who are responsible for middle level/junior high school and freshmen athletic programs be aware of these provisions so they may take advantage of and benefit from the flexible scheduling allowed in these school programs. At the same time administrators will be able to protect and maintain the eligibility of students who will be involved in these programs.

## School Administration Responsible for Fans at Home and Away Contests

By-Law 5.5.1 makes no distinction of whether a school is the visiting or home school as far as unsportsmanlike conduct is concerned. The school's administration is responsible for the conduct of its team, coaches, students and fans at any interscholastic event in which the school is participating.

The failure to uphold proper standards of conduct causes much of the criticism and adverse publicity of interscholastic athletic events. Furthermore, improper conduct hinders the achievement of the educational values derived from athletics. Only with the conscientious effort of all administrators, coaches, fans, and players can we achieve the most worthwhile objectives of interscholastic athletics.

## MSHSAA Catastrophic Insurance and Successful Prevention Techniques

The following provisions must be met in multiple-game events conducted in Missouri in the sports of basketball, soccer and football organized by a college or university, a member school(s), or a non-school entity co-sponsored by an MSHSAA member school in order for MSHSAA member schools to participate:

a. In all games involving MSHSAA member schools (one or both opponents), the designated host school shall be an MSHSAA member school, or the event organizer can designate an MSHSAA member school as the host of the overall event. If an MSHSAA member school is designated as the overall host of the event (i.e. initiating contracts between schools for all games, contracting all game officials and other administrative responsibilities), this overall event host school shall file a detailed financial summary of the event with the participating schools and the MSHSAA Office.

b. Game officials shall be approved by the participating schools, contracted directly by the host school administration, and registered with the MSHSAA in accord with By-Law 6.1.2.

c. All schools participating against MSHSAA member schools shall meet the provisions of 3.18.1. It is the responsibility of the MSHSAA member host school to confirm this status of the opposing school(s).

d. The event organizer shall file a financial report with the MSHSAA of-

fice within 90 days following the event. This is the responsibility of the event organizer. When a high school contest is held "in conjunction" with an intercollegiate contest(s), a financial report is not necessary.

e. Games that involve schools from other states may have state association requirements that are beyond these listed above. It is the responsibility of the MSHSAA member host school(s) and the event organizer to insure that these rules and all those previously mentioned are met.

f. The event organizer shall insure that the multiple-game event conducted in Missouri is approved at least 90 days in advance by MSHSAA (and the NFHS, if necessary).

g. A tournament or meet sponsored by a college or university involving only Missouri schools, must adhere to the above standards and shall have the approval of the Board of Directors (via Non-School Sponsored Event Sanctioning Procedure) the a minimum of 30 days prior to the first date of the event.

Editor's Note: A contest is "in conjunction" with an intercollegiate contest if the college and the high school events are conducted in the same sessions, tickets are sold as a single event, and the playing facility is not cleared between the contests. Items d and e reflect NCAA requirements."

## Leadership Training Institute

The NIAAA certification process and the Leadership Training Institute (LTI) offer athletic administrators a national process to develop leadership and professionalism. All three levels of certification require that one have at least a Bachelor's degree and send an application form and fee to the NIAAA in Indianapolis. The three levels of certification are:

The RAA (Registered Athletic Administrator) which is for those with little or no experience in athletic administration. The RAA level requires that one take LTI 501 and 502, obtain the verifying signature of a sponsor (athletic administrator, principal, superintendent, state athletic/activities association staff), approval of a PDF (Personal Data Form) listing their experience, education, and contributions, and read the NIAAA Code of Ethics.

The CAA (Certified Athletic Administrator) is for those with two or more years of experience. It requires that one take LTI 501, 502 and 504, approval of the PDF, pass a CAA examination of multiple choice questions with at least 75 correct answers out of 100 questions, employed by (or retired from) a school, school district or state high school athletic/activities association in such capacity that the administration of interscholastic athletics is (was) among job responsibilities, and read the NIAAA Code of Ethics.

The CMAA (Certified Master Athletic Administrator) is for those with CAA certification. This level of certification requires that one take LTI 501, 502, 504, and 506. Additionally, the candidate must complete a minimum of six (6) LTI electives, three (3) each from Leadership and Management Categories. The candidate must be employed so that administration of interscholastic athletics is/was one's primary responsibility. In addition to approval of the PDF, submit supporting documentation of all requirements and points earned since CAA designation, the candidate must complete a practical written exercise, optional program implementation and read the NIAAA Code of Ethics.

For certification forms or further information, please contact the NIAAA in Indianapolis at (317) 587-1450.

## Future Board of Directors and Appeals Committee Meeting Dates and Sites

The following dates have been set for meetings of the MSHSAA Board of Directors and Appeals Committee for the 2016-2017 school year: School administrators and coaches are reminded of how important it is to have your transfer forms and supporting documentation supplied to the MSHSAA office a minimum of two weeks before the Appeals Committee meeting.

### Board of Directors

November 30 - December 1, 2016 - MSHSAA office, Columbia (Wed.-Thu. of Week 22)  
January 25-26, 2017 - MSHSAA office, Columbia (Wed.-Thu. of Week 30)  
March 8-9, 2017 - MSHSAA office, Columbia (Wed.-Thu. of Week 36)  
April 7-8, 2017 - Tan-Tar-A, Osage Beach (Fri.-Sat. of Week 40)  
June 14, 2017 - MSHSAA office, Columbia (Wed. of Week 50)

All meetings shall begin at 8:30 a.m. with the exception of April 7, 2017 meeting which shall begin at 1:00 p.m.

### Appeals Committee

November 15, 2016 - MSHSAA office, Columbia (Tue. of Week 20)  
March 14, 2017 - MSHSAA office, Columbia (Tue. of Week 37)

### **All meetings begin at 8:30 a.m.**

Anyone attending a meeting in the MSHSAA office who requires auxiliary aids or services should request such services by contacting the executive director of the MSHSAA, telephone (573) 875-4880, no later than 48 hours before the meeting.

Hearings of student eligibility shall be closed as matters involving the eligibility status of students where personally identifiable private information from a student's educational record will be reviewed or discussed. Section 610.021(6 and/or 14) R.S.Mo.; 20 U.S.C. 1232g(b); 34 C.F.R. 99.1 et seq. All other portions of all meetings are open.

For more details on the sites and times of the meetings, contact the MSHSAA office or MSHSAA web site at [www.mshsaa.org](http://www.mshsaa.org).

### Volleyball Advisory Committee

November 10, 2016, MSHSAA Office, Columbia

### Soccer Advisory Committee

November 16, 2016, MSHSAA Office, Columbia

### Cross Country Advisory Committee

November 17, 2016, MSHSAA Office, Columbia

### Public/Nonpublic Advisory Committee

November 17, 2016, MSHSAA Office, Columbia

### Middle Level Advisory Committee

December 7, 2016, MSHSAA Office, Columbia

### Sports Medicine Advisory Committee

December 7, 2016, MSHSAA Office, Columbia

### Constitution Study Committee

December 8, 2016, MSHSAA Office, Columbia

### Football Advisory Committee

December 8, 2016, MSHSAA Office, Columbia

### Liaison Committee

February 7, 2017

### Athletic Directors Advisory Committee

February 8, 2017

## Annual Questionnaire to be Circulated in February

Each year, a questionnaire is prepared by the MSHSAA executive staff and distributed to member schools in early February. Items are placed on the annual questionnaire by the Board of Directors for the purpose of obtaining a consensus from member schools which will aid the Board in determining changes in the Constitution and By-Laws and in the regulations governing the administration of district and state events which are desired by the membership.

The annual questionnaire will be online. School administrators are urged to discuss items included on the questionnaire with staff members whose programs would be affected to get their input before completing and returning the questionnaire.

The Board of Directors relies quite extensively on the responses received to the questionnaire items when making important decisions that affect your interscholastic program. All administrators are urged to participate in this decision making process of your association by completing and returning the questionnaire.

## Area Meetings

This year the MSHSAA staff shall be conducting Area Meetings across the state to gather input and discuss important issues facing the membership. These meetings have proved to be extremely helpful to your Board of Directors and the MSHSAA staff. The meetings will be held during January. The meetings will begin at 9 a.m. and end promptly at 11 a.m. Background information for the topics will be distributed at each site.

It is very important for superintendents, principals and athletic administrators to attend the meetings and take part in the developing role of your association and the events being sponsored for our students. Many issues have a fiscal impact on schools and the association as well as an impact on instructional time. The MSHSAA Board and staff look forward to seeing you at one of the eight sites.

## Missouri Represented on National Federation Committees

The NFHS sponsors several national committees. The majority of these committees are committed to the formation and adoption of rules regulating specific interscholastic sports. The state of Missouri is well represented on the various committees. A hearty congratulation is extended to the following individuals for their involvement on these committees.

<u>Representative</u>	<u>School</u>	<u>Committee</u>
Toni Hill	Bloomfield	NFHS Board of Directors At-Large Representative
Dawn Callahan	Parkway West	Field Hockey Rules Committee
Greg Stahl	MSHSAA Staff	Football Rules Committee and Wrestling Rules Committee
Tom Kruse	Raymore-Peculiar	Football Rules Committee
Edward J. Moreno	Hillsboro	National Athletic Director Conference Advisory Committee
Kerwin Urhahn	MSHSAA Staff	NFHS National Council and Technology Committee
Stacy Schroeder	MSHSAA Staff	Swimming and Diving Rules Committee



## 2016-17 Basketball Schedule

All high schools participating in boys and/or girls basketball please note. Listed below are the pertinent dates associated with the 2016-17 Basketball Season:

First Possible Practice All Classes	October 31
Pre-Season Scrimmages	After 9th Practice Prior to First Game
First Possible Contest All Classes	November 18
District Tournaments Class 1, 2, and 3	February 18-25
District Tournaments Class 4 and 5	February 25-March 4
Class 1 Sectional Games	February 28
Class 2 and 3 Sectional Games	March 1
Class 1, 2, and 3 Quarterfinal Games	March 4
Class 4 Sectional Games	March 7
Class 5 Sectional Games	March 8
Class 4 and 5 Quarterfinal Games	March 11
Show-Me Showdown I	March 9-11
Show-Me Showdown II	March 16-18

If there are any questions, please contact Kevin Garner at the MSHSAA Office (573) 875-4880.

## Official Scorer for Basketball Apparel Requirement

The NFHS basketball rules committee implemented Rule 2-11-2 which now requires the official scorer to wear a black-and-white vertically striped garment. This is a 9-12 rule and is not a requirement but an option at the JH level. The NFHS rules committee felt that players, coaches and officials need to be able to quickly and easily identify the official scorer. Requiring the scorer to wear a striped garment will assist in this regard. In addition, wearing a striped garment will make the scorer look more professional.

# 2017 Show-Me Showdown

## SHOW-ME SHOWDOWN I SCHEDULE

**Classes 1, 2, and 3 – March 9-11, 2017**  
University of Missouri-Columbia

### HEARNES CENTER – Semifinal Games

Session 1A: Thursday, March 9, Classes 2 & 3

- 12:00 p.m. – Girls Semifinal (Class 3)
- 1:40 p.m. – Girls Semifinal (Class 3)
- 3:20 p.m. – Boys Semifinal (Class 2)
- 5:00 p.m. – Boys Semifinal (Class 2)
- 6:40 p.m. – Girls Semifinal (Class 2)
- 8:20 p.m. – Girls Semifinal (Class 2)

### MIZZOU ARENA – Semifinal Games

Session 1B: Thursday, March 9, Classes 1 & 3

- 12:00 p.m. – Boys Semifinal (Class 1)
- 1:40 p.m. – Boys Semifinal (Class 1)
- 3:20 p.m. – Girls Semifinal (Class 1)
- 5:00 p.m. – Girls Semifinal (Class 1)
- 6:40 p.m. – Boys Semifinal (Class 3)
- 8:20 p.m. – Boys Semifinal (Class 3)

### MIZZOU ARENA – Third Place Games

Session 2: Friday, March 10, Classes 1, 2, & 3

- 11:00 a.m. – Boys Third Place (Class 1)
- 12:45 p.m. – Girls Third Place (Class 1)
- 2:30 p.m. – Boys Third Place (Class 3)
- 4:15 p.m. – Girls Third Place (Class 3)
- 6:00 p.m. – Boys Third Place (Class 2)
- 7:45 p.m. – Girls Third Place (Class 2)

### MIZZOU ARENA – Championship Games

Session 3: Saturday, March 11, Classes 1, 2, & 3

- 11:00 a.m. – Boys Championship (Class 1)
- 12:50 p.m. – Girls Championship (Class 1)
- 2:40 p.m. – Boys Championship (Class 3)
- 4:30 p.m. – Girls Championship (Class 3)
- 6:20 p.m. – Boys Championship (Class 2)
- 8:10 p.m. – Girls Championship (Class 2)



## SHOW-ME SHOWDOWN II SCHEDULE

**Classes 4 and 5 – March 16-18, 2017**  
University of Missouri-Columbia

### MIZZOU ARENA

Session 1: Thursday, March 16, Class 4

- 3:30 p.m. – Boys Semifinal
- 5:10 p.m. – Boys Semifinal
- 6:50 p.m. – Girls Semifinal
- 8:30 p.m. – Girls Semifinal

### MIZZOU ARENA

Session 2: Friday, March 17, Classes 4 & 5

- 11:00 a.m. – Boys Third Place (Class 4)
- 12:45 p.m. – Girls Third Place (Class 4)
- 2:30 p.m. – Boys Semifinal (Class 5)
- 4:15 p.m. – Boys Semifinal (Class 5)
- 6:00 p.m. – Girls Semifinal (Class 5)
- 7:45 p.m. – Girls Semifinal (Class 5)

### MIZZOU ARENA

Session 3: Saturday, March 18, Classes 4 & 5

- 11:00 a.m. – Boys Third Place (Class 5)
- 12:50 p.m. – Girls Third Place (Class 5)
- 2:40 p.m. – Boys Championship (Class 4)
- 4:30 p.m. – Girls Championship (Class 4)
- 6:20 p.m. – Boys Championship (Class 5)
- 8:10 p.m. – Girls Championship (Class 5)

## Mandatory Basketball 14-Foot Court Coaches Boxes

It has come to the attention of the MSHSAA that there are numerous MSHSAA member schools that have gymnasiums with basketball courts that do not have the mandatory coaches boxes marked in paint on their court. There is a mandatory basketball game rule that involves these coaches boxes that must appear on the court.

Therefore, on all basketball courts that do not have these mandatory coaches boxes painted on the court, it is the responsibility of the host game management to place temporary strips of tape on the court before an interscholastic contest may begin. Officials are instructed not to begin any interscholastic contest until there are visible coaches boxes on the basketball court. These coaches boxes are to be located between 14 feet and 28 feet from each baseline unless an alternative location is approved in writing by the MSHSAA. Cooperation between MSHSAA member school host game management and game officials is appreciated and expected to insure the required fourteen-foot coaches boxes are present on all interscholastic basketball courts.

## Stomping of Bleachers

Large numbers of fans standing on and stomping bleachers in rhythm can create a physical hazard. Stomping adds additional physical strain which can conceivably cause the bleachers to collapse. This is particularly true of temporary bleachers erected for outdoor events and rollout bleachers used in gymnasiums. It is strongly recommended to all school administrators that steps be taken to eliminate the stomping of bleachers. Schools should be aware of the possible damage to the school property and the potential physical dangers to spectators in establishing any policies in this regard.

## Basketball Players Restricted to Playing in Six Quarters on One Day

Coaches are reminded that MSHSAA By-Law 3.21.1 restricts basketball players from participating in more than six quarters on one calendar date. If a participant plays in a previous game on the same day or evening (either the junior varsity preliminary or some other game that day) then the total number of quarters in both games may not be greater than six. For example, a player who was in three quarters of the junior varsity contest may participate in three quarters of the varsity game.

This is an eligibility standard. Thus, the game officials have no authority to become involved in matters relating to the six quarter rule. Coaches and bench personnel (scorers) should discuss in advance of the varsity contest the number of quarters each boy and girl may play.

The minimum penalty for using a player for more than six quarters on a calendar date is forfeiture of the game in which the violation occurs. Over the course of a season, a player may play no more quarters than five times the number of games scheduled for the highest team on which he/she plays plus the allowable tournaments. This could be 100 quarters, if the team schedules 20 games and one tournament; 90 quarters, if the team schedules 18 games and two tournaments; or 80 quarters if the team schedules 16 games and three tournaments. The total number of quarters for a season did not change with the Special Election, only the number of quarters a player can play in one day.

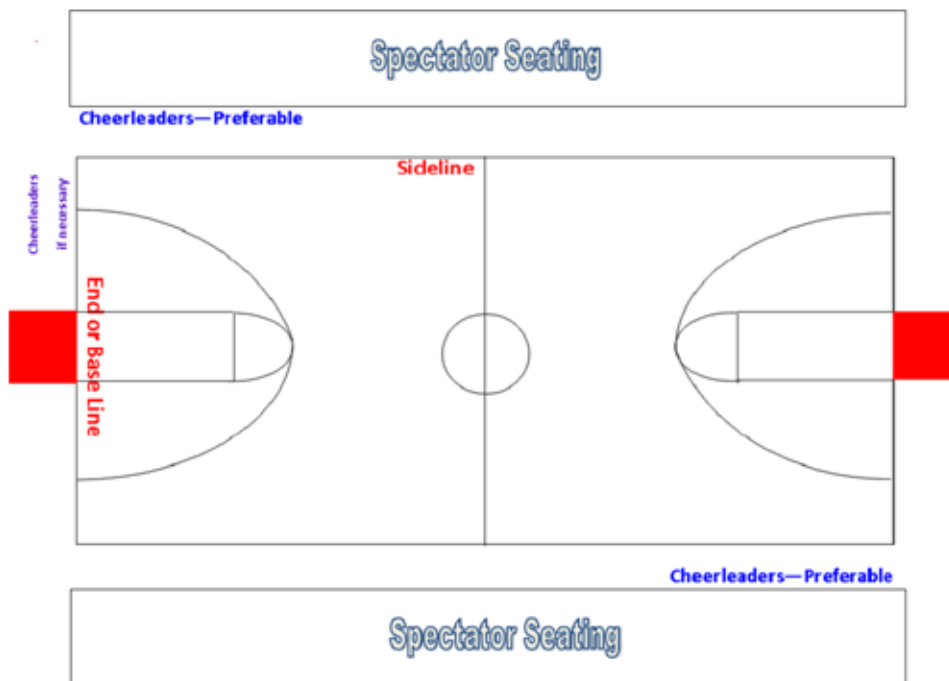
## Team Shall Not be Removed in Protest

The attention of coaches is called to MSHSAA By-Law Section 5.5.2 which provides that a school whose coach removes a team from play in protest may be required to appear before the Board of Directors at its next meeting to show reason why the school shall not be suspended. Removal of a team in protest is considered a gross act of unsportsmanlike conduct. If an emergency occurs of some type that would make it advisable to discontinue the contest this should be done by mutual agreement of the two schools and the officials. If done in protest, the provisions of By-Law Section 5.5.2 will apply.

## Placement of Sideline Cheer Squads During Basketball Contests

Sideline cheer coaches should coordinate the placement of the sideline cheer squads at basketball contests with the school athletic administrator or building principal. When possible, it is suggested that the squads should cheer along the sidelines close to the intersection of the sideline and baseline. If space does not permit, the squad should be located along the baseline but not beneath the basket or within the area of the free throw lane lines extended. In all locations the squad should be back at least three or four feet from the boundary lines.

Sideline cheerleaders should always be aware of the actions occurring in the contest and be prepared to move as play advances toward them. The squad should also be attentive to the movement of the contest officials to be certain they do not interfere with their officiating responsibilities.



## **Holiday (Thanksgiving or Christmas) Basketball Tournament Regulation Reminder**

All member schools should review MSHSAA By-Law 3.18 (Tournament, Meet, and Multiple-game Event Sanctioning Regulations) to insure that all provisions of the regulation are being met as they apply to all sports. Particular attention should be directed to the specific regulations regarding the conducting of a Christmas or Thanksgiving holiday tournament. It is important that all member schools are familiar with these provisions if they plan to host a holiday tournament or before they accept an invitation to participate in one. Listed below are two important specific reminders:

1. A tournament held during the Christmas or Thanksgiving holidays can include no more than 16 schools on a bracket that is scheduled so no school will compete on more than one school night preceding a school day, and that causes no loss of school time.

2. A tournament held during the Christmas holidays that begins no earlier than the day following Christmas Day and ends before any school entered resumes classes following the holidays may consist of two divisions with no more than 16 teams in each division competing for divisional honors only or three divisions with no more than 8 teams in each division competing for divisional honors only.

If you have any questions about MSHSAA By-Law 3.18, call the MSHSAA for further clarification.

## **Participation of Bands at Basketball Contests**

Part of the excitement at many of our interscholastic basketball contests involves the spirited music supplied by a pep or jazz band. The performances of the musical group are enjoyed by all attending the game. To ensure full appreciation of the group's performances certain guidelines, indicating when to play, should be followed. Band directors are reminded that as a courtesy to the teams and cheerleaders of both schools, the performances by the band should be limited to a certain schedule. The guidelines listed below indicate an appropriate playing schedule for the band.

### **Guidelines for bands performing at basketball contests:**

- The band should play before the game begins. The director should coordinate the schedule so that team members may be announced if desired by the host school.
- The band should play at halftime of the contest.
- The band should play in-between contests, again coordinating this schedule so that team members may be announced.
- The band may play at the end of the contest if desired.
- The band should not play during time-outs or the break between quarters in order to allow the sideline cheerleaders the opportunity to lead cheers. Players and coaches need to be able to communicate with each other during time-outs.
- Musical instruments may not be used as noise makers during the contests.

The band director and his/her performing group will display courtesy and respect to the players and sideline cheerleaders by playing at specific times. With good planning and cooperation the school pep band will be an integral part of the excitement and spirit of the contests.

## **2016-17 Basketball Game Timing Rule**

The Basketball Game Timing Rule shall be used for all interscholastic games both boys and girls, including high school varsity, junior varsity, sophomore, freshman, and all junior high contests. A running clock shall be used when after the end of the third quarter there is a point differential of 30 points or more. The clock will be stopped only under the following conditions:

1. Charged time-out
2. Injury time-out
3. To confer with scorers or timers, if necessary
4. Because of unusual delay in getting a dead ball alive
5. To administer all technical, intentional, flagrant and disqualifying fifth personal fouls
6. For any emergency

After these clock stoppages, the clock will begin to run again with normal play resuming procedures. If during the fourth quarter the point differential drops below 30 points, normal timing will resume until the 30 point differential has been reached again or the game ends.

## **Last Year's Scholar Bowl Questions Available for Purchase**

The questions which were used at the 2015-16 MSHSAA Scholar Bowl District and State tournaments, written by National Academic Quiz Tournaments, are available for purchase from the MSHSAA. The price for a set of these questions is \$50.00 plus shipping and handling for 8 games (5 District + 3 Sectional games) or \$100.00 plus shipping and handling for 18 games (5 District + 3 Sectional + 10 State Games). Schools that are interested in purchasing these questions must contact MSHSAA by phone or mail (the questions are included on the MSHSAA order form located on the website).

The question provider for the 2016-17 Scholar Bowl district and state tournament series is National Academic Quiz Tournaments, LLC, and these questions will be available for purchase following this year's State Championships.

## **Show-Me Scholar Bowl Question Provider**

The question provider for the 2016-17 MSHSAA Scholar Bowl districts and state series will be National Academic Quiz Tournaments. Should schools wish to purchase practice questions, simply contact National Academic Quiz Tournaments, LLC via their website: NAQT.com.

## Andy Johnston Receives NFHS Outstanding Music Educator of the Year Award

Each year, the NFHS Music Association gives its Outstanding Music Educator of the Year award to one recipient in each state. This year, MSHSAA is pleased to recognize Andy Johnston, of Springfield, Missouri, as the 2016-2017 Missouri state award recipient.

Andy earned a Bachelor of Music Education at Oklahoma State University in 1991 and Master of Music in Viola Performance at Missouri State University in 2001. He began his teaching career in 1992 with the Enid Public Schools in Enid Oklahoma and in 1997, Johnston became the high school orchestra director at Glendale High School, in Springfield, Missouri. Johnston has also served as Assistant Conductor, Springfield Youth Symphony (1998-2001), Conductor, Springfield Junior Symphony (2001-2006) Instructor of Applied Viola, Missouri State University (2007 and 2014). In 2011, he became the Music Director of the Springfield Youth Symphony; a position he still holds and in 2016 he became the Orchestra Director at Southwest Baptist University in Bolivar.



Johnston has contributed in many ways to the betterment of high school music programs. He has served on local and state committees and boards, and he continues to work towards the advancement of string education in general. His high school orchestras are noted for their excellence in performance, and his students are noted for their individual

accomplishments as musicians. Andy has worked to make elementary orchestra a priority in the Springfield Public Schools. He implemented and hosted the All-City Fifth Grade Orchestra Concert, showcasing hundreds of elementary schools students to parents, administrators, and community each year. Andy's high school performing groups, Springfield Junior Youth Symphony 2005 and Glendale High School Orchestras 2016 were chosen as performing groups for the MMEA Annual In-service Workshop/Conference. Additionally, he has conducted the Springfield Junior Youth Symphony in ASTA's National Orchestra Festival in 2006; and he was Assistant Conductor of the Springfield Youth Symphony on their performance in the 2000 Midwest Clinic in Chicago.

Andy is actively involved and maintains membership in several professional music education organizations such as the National Association for Music Education (NAfME), the Missouri Music Educators Association (MMEA), and the Missouri American String Teachers Association (MoASTA). He also serves on the MSHSAA String Sight Reading Subcommittee.

# LEARNING FROM MISTAKES





# Procedure for Late Submission of Music Entries

The following procedure has been approved by the MSHSAA Board of Directors regarding late fees for the MSHSAA District and State Music Festivals. This information is also available in Section 2-I of the MSHSAA Music Manual. The music manual is available for viewing and/or printing via the MSHSAA website under the Music Activities link.

Each music district has established a Tuesday entry deadline date. Deadline information is available through the MSHSAA Festival Manager Program and the MSHSAA website. Any director that fails to submit entry(s) or has left off entry(s) after the established Tuesday deadline may submit these entry(s) by 4:00 p.m. on the Thursday immediately following the Tuesday district deadline. Any school submitting entry(s) after the Tuesday deadline shall be assessed a late fee of \$100 plus a doubling of the entry fee(s). The MSHSAA Office shall be notified by phone before any late entry(s) are accepted. (Section 2-I-1)

Once the **second penalty deadline** has passed and the school music director has failed to enter one or more events for the district or state solo/small ensemble and/or large group festival the director may enter the event(s) under the following conditions. (Section 2-I-2)

1. Only entries that were omitted after the penalty deadline are eligible to enter. No scratches and/or cancellations will be allowed to enter. Only events that did not appear on any previously submitted entry form are eligible. The school music director must phone the MSHSAA office for approval **prior** to submitting a late entry form.
2. A late entry fee of **\$300 PER EVENT** will be assessed to the school.
3. The festival manager will be notified by the MSHSAA office advising them of the late entry or entries. This will allow the festival manager to schedule the event(s) to the festival schedule and print the necessary evaluation form(s).
4. Each late entry will be scheduled at the end of the day. It is at the discretion of the festival manager to place the late entry in an earlier time slot IF one is available. If there are no cancellations the event shall be scheduled at the end of the day.

5. Schools will only be allowed to submit late entries to the district in which their school has been assigned. No school will be allowed to participate in a different district festival or state festival day.

School directors and administrators should note that changes in entries submitted are only possible as specified below.

**Entry changes and additions to previously submitted entries:** Entry changes and additions to previously submitted entries can be made **prior** to the stated district entry deadline. Once the district entry deadline has passed, entries will only be accepted as outlined above.

After the district entry deadline date has passed, changes to previously submitted entries shall be permitted as follows:

- Selection changes for entries: Manager must be notified in writing by mail, e-mail, or fax.
- Cancellations: Manager must be notified in writing by mail, e-mail, or fax.
- Substitution of participants in small ensembles. Manager must be notified in writing by mail, e-mail, or fax.
- After the district entry deadline date has passed, changes to previously submitted entries shall **NOT** be permitted as follows:
- Adding entries: Entries not listed on the previously submitted computer entries cannot be accepted after the district festival has commenced. Refer to Section 2-I (Late Submission of Music Entries)
- Substituting an entry for a cancelled entry
- Verbal notification of substitution in a small ensemble
- Verbal notification of selection changes
- Verbal notification of cancelled entries

A substitution may be made in an ensemble at the district festival for participants who are ill or are unable to perform on the date of the festival provided a written statement of verification is signed by the school director and is provided to the festival manager prior to the performance. Confirmation of eligibility of the substitution must be submitted following the festival signed by the school principal. The rating shall be withheld until confirmation of eligibility is received from the school principal. If no confirmation is received within 72 hours of the festival the event shall be disqualified. The substitute

must adhere to the limitations on entries as listed in the MSHSAA Music Manual. If a substitution is made at the district level and the entry qualifies for the state festival, the entry would be required to perform at the state festival with the students that performed at district unless an emergency substitution is necessary at state. An emergency would include but is not limited to sudden illness, medical or family emergencies.

**District or state schedules shall not be altered without consent of the festival manager.** Penalty for the violation shall be disqualification of the entry/entries involved. Changes in the state schedule shall **not** be made unless a direct schedule conflict exists.

## 2016-17 SCHOLASTIC ACHIEVEMENT AWARDS

### Outstanding Scholastic Achievement (3.25 - 4.00 GPA)

#### Golden City HS

Girls Varsity Volleyball 3.49

#### St. Charles West HS

Boys Varsity Soccer 3.40  
Junior Varsity Football 3.34  
Girls Varsity Softball 3.55  
Girls Varsity Tennis 3.80  
Girls Varsity Volleyball 3.70  
Girls Junior Varsity Volleyball 3.30  
Girls Freshman Volleyball 3.60  
Girls Cross Country 3.68  
Boys Cross Country 3.50

#### Waynesville HS

Girls Varsity Cross Country 3.69  
Girls Varsity Golf 3.54  
Girls Varsity Volleyball 3.54  
Girls Varsity Tennis 3.42  
Boys Varsity Cross Country 3.39

### Distinguished Scholastic Achievement (3.00 - 3.24 GPA)

#### St. Charles West HS

Boys Junior Varsity Soccer 3.10  
Varsity Football 3.13

#### St. Louis University HS

Varsity Football 3.02

#### Waynesville HS

Boys Varsity Soccer 3.07  
Girls Varsity Softball 3.02

# How to Avoid Problems and Penalty Fees at District and State Music Festivals

Each year, there are numerous problems that develop regarding music festival entries. In order to avoid possible problems directors must be knowledgeable of MSHSAA policies, procedures, and rules. While these policies, procedures, and rules are provided to the school each year in the MSHSAA Music Manual, directors are not always as diligent as they should be to become informed. The result is often an unfortunate and unpleasant situation that could have been avoided with better preparation on the part of the directors. The following is an appropriate procedure for directors to follow which should help to prevent problems.

Early in the school year, the school administrator shall complete the required eligibility roster for all music students that will be participating in competitive/evaluation music events during the academic year. The eligibility roster must be completed online through the MSHSAA website [www.mshsaa.org](http://www.mshsaa.org). This must be done prior to the first competitive/evaluative music event of the school year. List only those students that meet the student eligibility requirements of MSHSAA as well as those of the school. Any student who does not meet the requirements is not eligible and cannot be listed. This procedure will be repeated at the beginning of

second semester and any changes to the eligibility roster notated. This will address student eligibility for all competitive/evaluative music events for the school year including the district and state music festival. This is a separate roster from the Festival Manager Program. The Festival Manager Program roster is used only for the MSHSAA District and State Music Festivals.

In August, a packet should have been received by the school athletic administrator of the MSHSAA member schools registered to participate in music activities, with instructions to forward to the music directors. This packet contained information regarding registration with the MSHSAA Festival Manager Program as well as general information about the festival manager program. The music manual is available on the MSHSAA website under the 'Music Activities' link. This will allow each music director to print and have their own copy for review at any time. Please take the time to read it completely. New wording has been underlined, areas of emphasis appear in bold text and all penalties appear in gray boxes. It is the director's responsibility to know, understand and follow the stated rules for the festival and to communicate this information to students and parents.

In order to avoid some of the most common problems, pay particular attention to the following areas:

- **Entry deadline dates and late entry procedures:** One problem that occurs each year is late entries. The Music Advisory Committee has spent a great amount of time discussing this procedure. The policy appears in the MSHSAA Music Manual under Section 2-I. Refer to article Procedure for Late Submission of Music Entries located elsewhere in this Journal.
- **Limitations on entries:** An individual student may enter no more than two small vocal ensembles, no more than two wind/percussion small ensembles and no more than two string small ensembles. No student shall enter two identical ensembles (i.e. ensembles with the same instrumentation or voicing). A student can also perform one vocal solo and a maximum of two wind, percussion or string solos (piano solos are not included).
- **Performance time limits:** Another area of which directors must be knowledgeable is the minimum performance time limit. Solo and small ensemble performances shall be a minimum of 3 minutes. If a performance is less than 3 minutes in length, an additional work should be chosen from the MSHSAA Prescribed Graded List to bring performance to at least 3 minutes. A penalty of "one rating lower" shall be imposed for any solo/small ensembles that perform less than 3 minutes.
- **Scores:** For small ensemble entries, the adjudicator must be supplied an original publication of the score of the work with each measure numbered. If a score is not published, contact the publisher and request permission to create one. Separate parts or an incomplete score will not be allowed and will result in the rating being lowered one rank. Exception: For string duets only, if no score of the work is available and the music publisher will not grant permission to create a score, then individual parts may be provided to the adjudicator.
- **Accompaniment:** Accompaniment is required if one is written for the work selected but cannot be used if the work is to be unaccompanied. Also, an individual serving as an accompanist may only accompany up to 20 performances per day at the festival.
- **Supervision:** As the entries at the festival are school entries, it is required that students be accompanied and supervised at the festivals by a member of the faculty or administration of the school or school district. If no faculty member is present, the school's entries will be considered disqualifications.

While these areas are not all-inclusive of possible pitfalls, they should be of help to directors to prevent many possible problems. It is imperative that directors be knowledgeable of the rules of the festival. We owe it to our students to prevent problems and teach them that rules exist for good reasons and must be followed.

## MSHSAA Music Adjudicator Training Session

The MSHSAA will sponsor one music adjudicator training session this school year. It will be held at the MMEA Conference on Wednesday, January 25, 2017. If you would like to register for this session, simply complete the registration form located on the MSHSAA website under the 'Music Activities' link and return it to MSHSAA. This program was developed by the MSHSAA Adjudicator Training Committee. The committee, which included music educators and experienced music adjudicators, was appointed by the MSHSAA Board of Directors as a result of a recommendation by the MSHSAA Music Advisory Committee. The main reason for embarking on the program was to bring about improved consistency among adjudicators statewide.

The specific objectives of the program as identified by the committee are:

- To make the adjudication process a constructive and educational experience for all participants in the MSHSAA Evaluative Music Festivals.
- To establish a consistent evaluation process by adjudicators at all MSHSAA Music Festivals.
- To establish an ongoing system of certification for music adjudicators.
- To establish an ongoing system of evaluation for music adjudicator.

This session is open to any music educator at no charge. In order to be certified to judge at the MSHSAA festivals, it is a requirement that the attendees have 7 years of teaching experience. Music educators with less than 7 years teaching experience are welcome to attend and would likely find the session beneficial. Again, to register, simply complete and return the registration form available on the MSHSAA website under the link 'music activities'. Registration deadline is January 9, 2017.

# September 2016 Board of Directors Summary

**Held September 14, 2016**

Transfer Waiver Applications (By-Law 3.10.4.i) (Duplicate school names indicates an additional transfer(s) student(s) for that school): African Centered College Preparatory, Aurora, Barstow, Barstow, Barstow, Barstow, Bell City, Benton, Benton, Bishop LeBlond, Bradleyville, Brentwood, Brentwood, Calvary Lutheran, Calvary Lutheran, Calvary Lutheran, Carnahan,

Board members present for the meeting were: Schmidt, Churchwell, Beem, Finley, Johnson, Linneman, Hill, Wilson, Dittmore and Soden. MSHSAA staff members present were: Urhahn, Seifert, Schroeder, Davis, Long, West, Stahl, Garner, and Mayse (general counsel).

Amended the agenda to add item #10 for the Brain Injury Report.

Motion Hill, second Soden, to enter into closed session for matters involving legal actions or litigation involving MSHSAA including any confidential or privileged communications between MSHSAA and its attorney. Section 610.021(1) R.S.Mo. Motion passed 10-0 on a roll call vote with members Schmidt, Churchwell, Beem, Finley, Johnson, Linneman, Hill, Wilson, Dittmore and Soden voting yes.

Motion Linneman, second Schmidt, to exit closed session. Motion passed 10-0 on a roll call vote with members Schmidt, Churchwell, Beem, Finley, Johnson, Linneman, Hill, Wilson, Dittmore and Soden voting yes.

Approved the minutes of the June 15, 2016 Meeting of the MSHSAA Board of Directors, the August 17 and August 31 meetings of the MSHSAA Appeals Committee.

Approved the general consent items as presented.

Transfer Waiver Applications (By-Law 3.10.4.i) (Duplicate school names indicates an additional transfer(s) student(s) for that school): Affton, African Centered College Preparatory, African Centered College Preparatory, Barstow, Barstow, Battle, Battle, Battle, Benton, Bishop DuBourg, Bishop LeBlond, Bishop LeBlond, Bloomfield, Bloomfield, Blue Eye, Bucklin, Butler, Cabool, California, Carnahan, Carnahan, Carrollton, Carthage, Central (Cape Girardeau) Junior, Central (Park Hills), Central (St. Joseph), Central (St. Joseph), Chaminade, Chillicothe, Christian, Christian, Christian, Christian,

Christian, Christian Brothers College (11 transfers), Cleveland NJROTC, Cleveland NJROTC, Cleveland NJROTC, Cleveland NJROTC, College Heights Christian, College Heights Christian, College Heights Christian, College Heights Christian, College Heights Christian, Concordia, Conway, Conway, Cooter, Cor Jesu Academy, Crystal City, Crystal City, DeSmet, DeSmet, DeSoto, Duchesne, East Newton, Eldon, Eldon, Fayette, Festus, Fredericktown, Glendale, Grandview, Greenwood, Greenwood, Greenwood, Hallsville, Harrisburg, Harrisonville, Hazelwood Central, Hazelwood East, Hazelwood East, Hazelwood West, Hazelwood West, Hazelwood West, Hazelwood West, Hillcrest, Hillsboro, Hillsboro, Jefferson (Conception), John B. Lange, John Burroughs, John Burroughs, John Burroughs, Joplin, Kickapoo, Kickapoo, Kirkwood, Kirkwood, Kirkwood, Kirkwood, Ladue Horton Watkins, Lafayette (St. Joseph), Lafayette (St. Joseph), Lafayette (St. Joseph), Lafayette (Wildwood), Lafayette County, Lafayette County, Lebanon, Lee's Summit North, Lift for Life Academy Charter, Lift for Life Academy Charter, Lift for Life Academy Charter, Lincoln College Prep, Lindbergh, Lone Jack, Lutheran North, Lutheran North, Lutheran North, Lutheran North, Lutheran North, Lutheran North, Lutheran North, Lutheran North, Lutheran North, Lutheran South, Lutheran South, Lutheran South, Lutheran South, Lutheran St. Charles, Lutheran St. Charles, Lutie, Marquand-Zion, Marshall, Marshall, Maryville, McCluer North, Meadow Heights, Mercer, MICDS, Mountain Grove, Nerinx Hall, Nerinx Hall, North Platte, North Technical, Northland Christian, Northwest (Cedar Hill), Notre Dame (St. Louis), Notre Dame de Sion, Oak Ridge, O'Hara, Orchard Farm, Oterville, Owensville, Palmyra, Paris, Park Hill, Parkway South, Plattsburg, Polo, Portageville, Republic, Risco, Rock Bridge, Rock Bridge, Rockhurst, Rockhurst, Salisbury, Saxony Lutheran, Seneca, Smith-Cotton, Smith-Cotton, Smith-Cotton, Smithville, South (Joplin), Springfield Catholic, St. Dominic, St. Dominic, St. Joseph Christian, St. Joseph Christian, St. Joseph's Academy, St. Joseph's Academy, St. Joseph's Academy, St. Joseph's Academy, St. Louis University, St. Mary's (St. Louis), St. Mary's (St.

Louis), St. Mary's (St. Louis), St. Paul Lutheran (Concordia), St. Paul Lutheran (Farmington), St. Paul Lutheran (Farmington), St. Paul Lutheran (Farmington), St. Pius X (Festus), St. Pius X (Festus), St. Pius X (Festus), St. Pius X (Festus), St. Pius X (Festus), St. Pius X (Festus), St. Pius X (Kansas City), Staley, Staley, Ste. Genevieve, Ste. Genevieve, Ste. Genevieve, Ste. Genevieve, Ste. Genevieve, Ste. Genevieve, Sturgeon, Sullivan, Sullivan, Sullivan, Summit Christian Academy, Summit Christian Academy, Tarkio, Timberland, Trenton, Tri-County, Trinity Catholic, Trinity Catholic, Trinity Catholic, Trinity Catholic, Trinity Catholic, Troy Buchanan, Truman, Union, University City, Ursuline Academy, Vianney, Vianney, Visitation Academy, Warrenton, Warrenton, Waynesville, Webster Groves, Webster Groves, Webster Groves, Wentworth Military Academy, Wentworth Military Academy, Wentworth Military Academy, Westminster Christian Academy (14 transfers), Whitfield, Whitfield, Whitfield, Whitfield, Wright City, and Wright City.

Transfer Hardship Applications (By-Law 3.10.4.h) (Duplicate school names indicates an additional transfer(s) student(s) for that school): Adrian, Advance, Affton, Affton, African Centered College Preparatory, African Centered College Preparatory, Ballard, Barstow, Battle, Bevier, Bishop DuBourg, Bishop DuBourg, Bismarck, Blue Springs, Blue Springs South, Blue Springs South, Blue Springs South, Blue Springs South, Blue Springs South, Bolivar, Bowling Green, Bradleyville, Branson, Branson, Branson Junior, Brashear, Brashear, Brashear, Brittany Hill, Brunswick, Bucklin, Bucklin, Buffalo, Cabool, Cabool Junior, California, California, Calvary Lutheran, Camdenton, Camdenton, Camdenton, Cameron, Cardinal Ritter, Cardinal Ritter, Cardinal Ritter, Cardinal Ritter, Cardinal Ritter, Carnahan, Carnahan, Carrollton, Carthage, Carthage, Carthage, Carthage, Cassville, Central (New Madrid County), Central (New Madrid County), Central (Springfield), Central (Springfield), Central (Springfield), Central (Springfield), Central (Springfield), Chillicothe, Christian, Christian Broth-

*Continued on page 18*

## June Board of Directors Meeting Summary, con't from page 17

ers College, Christian Brothers College, Clearwater, Clever, Clinton, Clinton, Clinton, Crest Ridge, Crest Ridge, Crest Ridge, Crest Ridge, Cuba, Cuba, Cuba, Cuba, DeSmet, DeSmet, DeSoto, Dexter, Dixon, Dixon, Duchesne, Duchesne, East (Kansas City), East Buchanan, El Dorado Springs, El Dorado Springs, El Dorado Springs, Fair Grove, Fair Grove, Fair Grove, Farmington, Farmington, Farmington, Farmington, Festus, Festus, Forsyth, Forsyth, Fort Osage, Fox, Fox, Francis Howell, Francis Howell Central, Francis Howell Central, Francis Howell Central, Francis Howell Central, Francis Howell Central, Francis Howell Central, Francis Howell Central, Francis Howell Central, Francis Howell North, Francis Howell North, Ft. Zumwalt East, Ft. Zumwalt North, Ft. Zumwalt North, Ft. Zumwalt North, Ft. Zumwalt North, Ft. Zumwalt South, Ft. Zumwalt South, Ft. Zumwalt South, Ft. Zumwalt West, Ft. Zumwalt West, Ft. Zumwalt West, Fulton, Fulton, Fulton, Galena, Gateway Science Charter, Gateway Science Charter, Glasgow, Glendale, Glendale, Glendale, Grain Valley, Grandview, Grandview (Hillsboro), Greenfield, Hannibal, Harrisonville, Hawkins Junior, Hazelwood Central, Hazelwood Central, Hazelwood Central, Hazelwood Central, Hazelwood Central, Hazelwood Central, Hazelwood West, Hazelwood West, Hazelwood West, Hazelwood West, Hazelwood West, Helias Catholic, Herculeum, Hermitage, Hickman, Hickman, Hickman, Hillcrest, Hogan Prep Academy Charter, Hogan Prep Academy Charter, Hogan Prep Academy Charter, Hogan Prep Academy Charter, Hollister, Holt, Iberia, Iberia, Jackson, Jackson, Jasper, Jefferson City, Jefferson Middle, Joplin, Joplin, Kearney, Kearney, Kearney, Kelly, Kennett, Kickapoo, Kirkwood, Knob Noster, La Monte, La Monte, La Monte, La Plata, Ladue Horton Watkins, Lafayette (Wildwood), Lafayette (Wildwood), Lafayette (Wildwood), Lathrop, Lawson, Lawson, Lawson, Lee's Summit, Lee's Summit North, Lee's Summit West, Lee's Summit West, Lewis and Clark, Lewis and Clark, Liberty, Liberty, Liberty (Wentzville), Liberty (Wentzville), Liberty North, Liberty North, Licking, Lincoln, Lincoln, Lincoln College Prep, Lindbergh, Lindbergh, Louisiana, Lutheran North, Lutheran North, Lutheran South, Lutheran South, Lutheran St. Charles, Lutheran St. Charles, Malden, Mansfield,

Maplewood-Richmond Hts., Maplewood-Richmond Hts., Marionville, Marionville, Marquette, Marquette, Marquette, Marquette, Marshall, Marshall, Marshall, Marshall, Marshall, Marshall, Maysville, McCluer, McCluer, McCluer North, McCluer North, McCluer South-Berkeley, McCluer South-Berkeley, McDonald County, Meadow Heights, Mehlville, Mexico, Mexico, Midway, Milan, Miller Career Academy, Miller Career Academy, Monett, Monroe City, Montgomery County, Mountain Grove, Mt. Vernon, Mt. Vernon, Mt. Vernon, Mt. Vernon, Mt. Vernon, Naylor, Naylor, Neosho, Nevada, Nevada, Nevada, Nevada, New Covenant Academy, Newburg, Nian-gua, Nixa, Nixa, Nixa, Nodaway-Holt, Norborne, North (Joplin), North Andrew, North Callaway, North County Middle, North County Middle, North County Middle, North County Middle, North Kansas City, North Pemiscot, North Shelby, North Shelby, North Technical, North Technical, North Technical, North Technical, North Technical, North Technical, North Technical, North Technical, North Technical, Northeast (Kansas City), Northwestern (Mendon), Norwood, Notre Dame de Sion, Oak Park, Oak Park, Oakland Middle, Oakland Middle, Oakville, Oakville, Oakville, O'Hara, O'Hara, Orchard Farm, Orchard Farm, Ozark, Palmyra, Park Hill, Park Hill, Park Hill, Park Hill, Park Hill, Park Hill, Park Hill, Park Hill, Park Hill, Park Hill South, Park Hill South, Parkview, Parkview, Parkway Central, Parkway Central, Parkway North, Parkway North, Parkway North, Parkway North, Parkway South, Parkway South, Parkway West, Parkway West, Parkway West, Parkway West, Penney, Pierce City, Platte County, Pleasant Hill, Pleasant Hill, Portageville, Princeton, Princeton, Princeton, Princeton, Raymore-Peculiar, Raytown, Raytown South, Raytown South, Raytown South, Raytown South, Raytown South, Reeds Spring, Reeds Spring, Ritenour, Ritenour, Rockhurst, Rockwood Summit, Rockwood Summit, Rolla, Rolla, Rolla, Roosevelt, Russellville, Salem, Salem, Salem, Salem, Savannah, School of the Ozarks, Scott City, Scott County Central, Seckman, Seckman, Seneca, Seymour, Sikeston, Smith-Cotton, Smith-Cotton, Smith-Cotton, Smith-Cotton, Soldan International Studies, Soldan

International Studies, Soldan International Studies, Soldan International Studies, South Callaway, South Shelby, South Shelby, South Shelby, South Shelby, Southwest (Livingston County), Sparta, St. Charles, St. Charles, St. Charles, St. Charles, St. Charles West, St. Clair, St. Clair, St. Dominic, St. Dominic, St. Dominic, St. James, St. Mary's (St. Louis), St. Mary's (St. Louis), St. Mary's (St. Louis), St. Mary's (St. Louis), St. Paul Lutheran (Farmington), St. Paul Lutheran (Farmington), St. Teresa's Academy, Staley, Staley, Staley, Staley, Ste. Genevieve, Stewartville, Stockton, Stockton, Stover, Strafford, Sullivan, Thayer, Thayer, The Fulton School at St. Albans, The Summit Preparatory, Thomas Jefferson, Timberland, Trinity Catholic, Trinity Catholic, Troy Buchanan, Troy Buchanan, Troy Buchanan, Troy Buchanan, Truman, Truman, Truman, Tusculumbia, Twin Rivers, Ursuline Academy, Valley, Valley, Valley, Van Horn (Independence), Vashon, Vashon, Warrensburg, Washington, Waynesville, Waynesville, Waynesville, Weaubleau, Weaubleau, Webb City, Webb City, Webb City, West Plains, West Plains, West Plains, West Plains, West Platte, Westminster Christian Academy, Westminster Christian Academy, Willard, Willard, Willard, Willard, William Chrisman, William Chrisman, Willow Springs, Willow Springs, Winfield, Winnetonka, Winston, Wright City, and Wright City.

Self-Reported Violations and/or Requests for Lesser Penalties (By-Law 5.4):

Recommend action by school be accepted with reprimand issued and administration acknowledged for self-reporting – Aurora – Self-reported a violation of By-Laws 2.3 and 3.4 – accepted school's actions, no forfeiture necessary due to school losing contest, student ineligible for the fall semester; Clark County – Self-reported a violation of the Softball Manual and state adoption of a double first base being used in MSHSAA softball games, accepted school's actions, no forfeitures required; Cuba – Self-reported a violation of By-Law 3.25.1, accepted school's actions, forfeit of varsity match required, student's eligibility to be reinstated after sitting out the required sets imposed by the school; DeSmet – Self-reported a violation of By-Law 2.6, accepted school's actions,

*Continued on page 19*



**June Board of Directors Meeting Summary, con't from page 18**

no forfeitures required, students' eligibility is reinstated. DeSoto – Self-reported a violation of By-Law 3.9, accepted schools actions, no forfeitures required, student may have eligibility reinstated after completing 14 days of physical conditioning on 14 separate days; Eminence – Self-reported a violation of By-Laws 2.4.1 and 4.2.5, accepted school's actions, school to forfeit any events participated in by the ineligible student; Hickman – Self-reported a violation of the Softball Manual and state adoption of a double first base being used in MSHSAA softball games, accepted school's actions, no forfeitures required; Jefferson City – Self-reported a violation of By-Laws 3.4 and 2.3, accepted school's actions, contest in which ineligible student played to be forfeited, student ineligible for the fall semester; Oakville – Self-reported a violation of By-Law 3.10.4, accepted school's actions, no forfeitures required, student fully eligible; Oakville – Self-reported a violation of By-Law 3.10.4, accepted school's actions, no forfeitures required, students fully eligible; Odessa – Self-reported a violation of By-Law 3.15.5.b, accepted school's actions, no forfeitures required, no further action required; Pattonsburg – Self-reported a violation of By-Law 3.9, accepted schools actions, no forfeitures required, student may have eligibility reinstated after completing 14 days of physical conditioning on 14 separate days; Principia – Self-reported a violation of By-Law 3.4, accepted school's actions, no forfeitures required because student was fully eligibility and it was a clerical error that left her off the eligibility roster; Rock Bridge – Self-Reported a violation of MSHSAA Board Policy #23, accepted schools actions, no forfeitures required, students' eligibility to be reinstated; Rolla – Self-reported a violation of By-Law 3.14, accepted school's actions, no forfeitures, students reinstated, coach to be reinstated after sitting out two contests; Southwest (Livingston County) – Self-reported a violation of By-Laws 3.10 and 3.4, accepted school's actions, no forfeitures required, student is fully eligible; Tri-County – Self-reported a violation of By-Laws 3.10 and 3.4, accepted schools actions, no forfeitures are required, student is fully eligible; Troy Buchanan – Self-reported a violation of By-Laws 3.4 and 1.7, accepted school's actions, coach made a mistake and had to sit out a contest for

not following By-Law 1.7, students didn't suffer any injuries that could have resulted in a liability issue for coach and school; Westminster Christian Academy – Self-reported a violation of the MSHSAA Football Manual, accepted school's actions, school to delay use of blocking sled to account for using the sled before it was allowable, students' eligibility to be reinstated; Windsor (Imperial) – Self-reported a violation of By-Laws 2.3.2.a and 3.4, accepted school's actions which included forfeitures of games the ineligible student participated in, student must sit out equal number of contests as he played when ineligible after he regains his eligibility.

Recommend action by school be accepted and administration acknowledged for self-reporting with no further action - Fredericktown – Self-reported a violation of By-Law 3.13.2, accepted schools actions, no forfeitures required, student to be reinstated after sitting out nine contests; Lincoln – Self-reported a violation of By-Laws 2.2.2 and 2.2.5, accepted school's actions, no forfeitures required, student to be reinstated after serving a two-game suspension at the varsity level after court requirements are met; Park Hill South – Self-reported a violation of By-Law 3.13.2.a.3.(d) – accepted the school's actions, no forfeitures required, student's eligibility to be reinstated after sitting out three matches; Richmond – Self-reported a violation of By-Laws 2.2.2 and 2.2.5, accepted school's actions, no forfeitures required, student to be reinstated as fully eligible after sitting out three contests at the varsity level after September, 9, 2016. Application for approval of Senior High School Cooperative Sponsorships (By-Law 1.4.1): Bishop LeBlond and St. Joseph Christian high schools – Girls Golf (2016-17 and 2017-17); Cainsville and Ridgeway high schools – Girls Fall Softball (2016-17 and 2017-18); Eugene and Blair Oaks high schools – Target Shooting (2016-17 and 2017-18); The Summit Preparatory Academy and New Covenant Academy high schools – Boys Tennis (2016-17 and 2017-18).

Application for approval of Junior High School Cooperative Sponsorships (By-Law 1.4.2): Braymer and Breckenridge junior highs – 8-Man Football (2016-17); California and High Point junior highs – Boys and Girls Cross Country (2016-17); California and Latham junior highs

– Cheerleading (2016-17); Campbell and St. Teresa's (Campbell) junior highs – Girls Basketball and Girls Volleyball (2016-17); Cassville and Shell Knob junior highs – 11-Man Football (2016-17); Central (New Madrid) and Immaculate Conception (New Madrid) junior highs – Music (2016-17); Chillicothe and Bishop Hogan (Chillicothe) junior highs – 11-Man Football, Girls Softball, Boys and Girls Track, and Wrestling (2016-17); Delta Woods and Moreland Ridge junior highs – Music (2016-17); Drexel and Miami junior highs – 8-Man Football (2016-17); Heritage and South Valley junior highs – Boys and Girls Basketball, Cheerleading, Boys and Girls Cross Country, 11-Man Football, Boys and Girls Track, Girls Volleyball, and Wrestling (2016-17); Kelly, St. Denis (Benton), and St. Augustine (Kelso) junior highs – Baseball, Boys and Girls Cross Country, 11-Man Football, and Boys and Girls Track (2016-17); Mark Twain and Perry Christian Academy junior highs – 11-Man Football (2016-17); Monett and Trinity Lutheran (Freistatt) junior highs – Girls Volleyball and Girls Volleyball (2016-17); North Nodaway and West Nodaway junior highs – Girls Softball (2016-17); Paul Kinder and Brittany Hill junior highs – Music (2016-17); Qulin and Fisk junior highs – Baseball and Boys Basketball (2016-17); Stover and St. Paul Lutheran (Stover) junior highs – Boys and Girls Cross Country, Boys and Girls Soccer, and Boys and Girls Track (2016-17).

Denied the Baseball Advisory Committee's recommendation for "bonus games".

Urhahn and Davis discussed with the Board an item from the Music Advisory Committee (recommendation #10) regarding the policy of bands/orchestras being comprised of at least 50-percent high school students.

Suspended the implementation of the Music Advisory Committee recommendation #10 until the 2017-18 school year to allow schools time to address this in their school schedules.

Schmidt reported to the Board from the Finance Committee regarding the annual audit.

Long discussed with the Board the reports submitted by the accounting firm of Williams Keepers, LLC for the FY2015 Audit Report..

*Continued on page 20*

**June Board of Directors Meeting Summary, con't from page 19**

Long presented the Board with FY2016 Final, July 2016 and August 2016 financial reports.

Accepted the financial reports as presented.

Accepted the FY2017 budget as presented.

West presented two recommendations to the Board from the Media Advisory Committee: 1) mandatory posting of team schedules to the MSHSAA website and updated scores on the 1st and 15th of each month. Failure to comply with this requirement would have three consequences:

a) the first offense schools will be sent an e-mail. This message will be addressed to the Athletic Director and carbon copied to the Principal, Superintendent and coach of offending school and contain the tiered consequences of subsequent offenses; b) the second offense would assess a \$50 fine to the school per offending sport; c) the third offense would assess a \$100 fine in addition the coach will be suspended for the first post-season contest of that sport; 2) to not guarantee credentials or work space for applications not received prior to deadline in effort to enforce credential request deadlines. Amended by Staff: add a fee of \$100 for credential if request is made after posted deadline and \$250 if request is made day of event.

Approved recommendation #1 as amended with the elimination of the coach suspension and approve recommendation #2 as amended to include the late fees from the Media Advisory Committee. The first recommendation would be implemented at the start of the 2017-18 school year. The second recommendation would be implemented immediately.

Motion Johnson, second Hill, to enter into closed session for matters involving the eligibility status of students where personally identifiable private information from a student's educational record may be reviewed or discussed. Section 610.021(6 and/or 14) R.S.Mo.; 20 U.S.C. 1232g(b); 34 C.F.R. 99.1 et seq. Motion passed 10-0 on a roll call vote with members Schmidt, Churchwell, Beem, Finley, Johnson, Linneman, Hill, Wilson, Dittmore and Soden voting yes.

Motion Johnson, second Soden, to exit closed session. Motion passed 10-0 on a roll call vote with members Schmidt, Churchwell, Beem, Finley, Johnson,

Linneman, Hill, Wilson, Dittmore and Soden voting yes.

The following action was reported out of closed session:

Motion Hill, second Schmidt, to uphold the Appeals Committee decision for the student of Lutheran North High School based on evidence the transfer was made for athletic reasons. Motion passed 10-0 on a roll call vote with members Schmidt, Churchwell, Beem, Finley, Johnson, Linneman, Hill, Wilson, Dittmore and Soden voting yes.

Motion Beem, second Soden, to deny full eligibility to the student of Lutheran South High School due to lack of evidence of a hardship. Motion passed 9-0 on a roll call vote with members Schmidt, Churchwell, Beem, Finley, Johnson, Hill, Wilson, Dittmore and Soden voting yes; Linneman abstained.

Motion Beem, second Wilson, to grant full eligibility to the student of Westminster Christian Academy High School due to evidence of a hardship. Motion passed 8-1-1 on a roll call vote with members Schmidt, Churchwell, Beem, Johnson, Hill, Wilson, Dittmore and Soden voting yes; Finley voting no; and Linneman abstained.

Approved the senior high cooperative agreement request between Bayless and Valley Park high schools.

Determined to restrict Barat Academy's post-season participation until the 2015-16 fees are paid.

Took no action on the reported By-Law 2.6 (Undue Influence) violation of Christian High School as it was determined that no violation occurred but granted permission to investigate possible former violation by the school.

Determined to treat the By-Law 2.3 (grade tampering for eligibility purposes) involving Van Horn High School as an anonymous report and take no further action.

Determined to take no further action in the By-Law 2.6 (Undue Influence) violation involving Stockton High School as it was determined that no violation occurred violation.

Resolved to take no action in the By-Law 3.15.3 (Contact Days) violation involving Kearney High School as it was determined no violation had occurred.

The Board received a request from Eldon High School to allow a junior high to be in cooperative agreements with two

schools separately. No action taken by the Board.

Urhahn informed the Board of the lack of response from the schools to a letter sent to superintendents this fall regarding voluntary participation in concussion insurance. By consensus, the Board requested that an e-blast be sent to schools offering this coverage to the schools again.

Long reported to the Board on the status of championships RFPs. No action taken by the Board.

Approved the Board Policy on Unmanned Aerial Vehicle (UAV) – Unmanned Aircraft Systems (UAS) – Drones as presented.

Approved the Brain Injury Report as presented.

The Board reviewed various miscellaneous items which included: Miscellaneous Newspaper Articles and Informational Materials (NFL – Backed Youth Program Says It Reduced Concussions); Listing of Advisory Committees; Review of Evaluation of AD Workshop; Sportsman-ship Summit Summary/Evaluation; One-Day Cheer Clinic Attendance Summary; All-Time MSHSAA Board of Directors Members; When We Were Young Production Schedule.

The meeting was adjourned.

# ► #MYREASONWHY ◀ *My Team*

They are like my second family.

After practices, we all go out to eat together. On weekends, we meet up to ride bikes or swim.

And when we play, it's not for the people up in the stands. It's not for the victory. It's just for us.

## **MAHLIK H.**

*Student from Bloomington, IL  
Football, Wrestling*

## *What's Your Reason?*

High school activities allow you to connect to yourself, your community and your future. Find your place. Find yourself. Find your reason why.

Learn more and join in at  
[nfhs.org/myreasonwhy](http://nfhs.org/myreasonwhy)



#MyReasonWhy



**MSHSAA**  
**1 North Keene St.**  
**PO Box 1328**  
**Columbia, MO 65205-1328**

**Nonprofit Org.**  
**U.S. POSTAGE**  
**PAID**  
**COLUMBIA, MO**  
**Permit 5**

**Routing Report**

This routing report is provided to assist principals and athletic directors in ensuring that the *MSHSAA Journal* is seen by all necessary school personnel. Each individual should check the appropriate box after having read the *Journal* and pass it on to the next individual on the list or return it to the athletic administrator.

- |  |   |
|--|---|
| <input type="checkbox"/> Athletic Director         | <input type="checkbox"/> Girls Tennis Coach           |
| <input type="checkbox"/> Baseball Coach            | <input type="checkbox"/> Boys Tennis Coach            |
| <input type="checkbox"/> Girls Basketball Coach    | <input type="checkbox"/> Girls Track & Field Coach    |
| <input type="checkbox"/> Boys Basketball Coach     | <input type="checkbox"/> Boys Track & Field Coach     |
| <input type="checkbox"/> Girls Cross Country Coach | <input type="checkbox"/> Girls Volleyball Coach       |
| <input type="checkbox"/> Boys Cross Country Coach  | <input type="checkbox"/> Boys Volleyball Coach        |
| <input type="checkbox"/> Football Coach            | <input type="checkbox"/> Wrestling Coach              |
| <input type="checkbox"/> Boys Golf Coach           | <input type="checkbox"/> Cheerleading Sponsor         |
| <input type="checkbox"/> Girls Golf Coach          | <input type="checkbox"/> Band/Music Director          |
| <input type="checkbox"/> Girls Soccer Coach        | <input type="checkbox"/> Speech and Debate Sponsor    |
| <input type="checkbox"/> Boys Soccer Coach         | <input type="checkbox"/> Academic Competition Sponsor |
| <input type="checkbox"/> Softball Coach            | <input type="checkbox"/> Other: _____                 |
| <input type="checkbox"/> Girls Swimming Coach      | <input type="checkbox"/> Other: _____                 |
| <input type="checkbox"/> Boys Swimming Coach       | <input type="checkbox"/> Other: _____                 |