

Missouri State High School Activities Association

# Journal



Official Publication of MSHSAA

Vol. 80, No. 2

Dec. 2015

## Departments

Sponsorship Article.....	1
Questions & Answers .....	6
News.....	2-5, 7-11
Board of Directors.....	12-15
Winter Athletics.....	16-18
Spring Athletics.....	19
Activities .....	19-21

## Executive Staff

### DR. KERWIN URHAHN Executive Director

Eligibility rulings, transfers, interpretation of Constitution and By-Laws, budget and finance, insurance, litigation, legislative liaison, school classification, enrollments.

### STACY SCHROEDER Assoc. Executive Director

Swimming and diving, Scholar Bowl, Transfers (hardships & waivers), personnel, MSHSAA Leadership School program, eligibility.

### HARVEY RICHARDS Assoc. Executive Director

Football, cross country, track and field, camps and clinics, all-star events, sports medicine, team hosts, coaches education, non-faculty coaches, eligibility.

### DAVINE DAVIS Asst. Executive Director

Music, volleyball, cheerleading, dance, performing groups, Transfers (foreign exchange/international students), sanctions, eligibility.

### KEVIN GARNER Asst. Executive Director

Basketball, soccer, transfers, athletic directors liaison, waivers, eligibility.

### DON MAURER Asst. Executive Director

Baseball, softball, golf, speech and debate, eligibility.

### GREG STAHL Asst. Executive Director

Wrestling, officials coordinator, officials' registration, officials' rules meetings, special reports, tennis, eligibility.

### CRAIG LONG Chief Financial Officer

Budget and finance, vendor contracts and bids, advertising, corporate partners, awards, billing, buildings and grounds.

### JASON WEST Communications Director

Publications, media relations, public relations, television and radio rights, web site maintenance, records, statistics, sportsmanship programs & Summit, Distinguished Service Awards, Keller Awards, Scholastic Achievement Awards, Traditions, student services.

## December 2015 (vol. 80, no. 2)

The MSHSAA Journal is published four times per year (August, December, February and May) by the Missouri State High School Activities Association.

**1 N. Keene St., PO Box 1328  
Columbia, MO 65205-1328  
(573) 875-4880, Fax (573) 875-1450  
email@mshsaa.org**

© 2015 MSHSAA, all rights reserved.

The Journal is available free on the Association website, www.mshsaa.org. Copies are printed and mailed to all dues-paying senior highs and junior highs. It is also available via subscription for \$8 per school year by calling the MSHSAA office.

## Eligibility Rulings

All official eligibility opinions shall be in writing and shall bear the signature of the executive director. Verbal rulings are not official. Principals are reminded that correspondence concerning eligibility rulings, annual eligibility lists, applications for waiver of the transfer rule, hardship transfers and sanction forms, must be signed by the principal for consideration by the MSHSAA.

# Missouri State High School Activities Association



## 2015-16 Board of Directors



**Dr. Jennifer Schmidt, Pres.**  
South Central District  
Principal  
Sullivan HS  
Term Expires 2018



**Eric Churchwell, V.P.**  
Northeast District  
Superintendent  
Palmyra School  
Term Expires 2016



**Dr. Mark Beem**  
Central District  
Superintendent  
Hickory County  
Term Expires 2017



**Toni Hill**  
At-Large Region 2  
Superintendent  
Bloomfield Schools  
Term Expires 2017



**Chris Wilson**  
Southeast District  
Superintendent  
Kennett Schools  
Term Expires 2019



**Mark Linneman**  
St. Louis District  
Athletic Director  
Lutheran South HS  
Term Expires 2016



**Corey Johnson**  
At-Large Region 1  
Athletic Director  
Hazelwood East  
Term Expires 2019



**Ken Eaton, Pres.**  
Northwest District  
Superintendent  
Mound City R-2  
Term Expires 2016



**Dr. Paul Kinder**  
Kansas City District  
Superintendent  
North Kansas City Schools  
Term Expires 2016



**Brett Soden**  
Southwest District  
Principal  
Strafford HS  
Term Expires 2019

## Mission Statement

"The MSHSAA promotes the value of participation, sportsmanship, team play, and personal excellence to develop citizens who make positive contributions to their community and support the democratic principles of our state and nation."

## Contact Info.

### MSHSAA

1 N. Keene St., PO Box 1328  
Columbia, MO 65205  
(573) 875-4880  
Fax (573) 875-1450  
www.mshsaa.org  
email@mshsaa.org

**Email Policy:** Due to the high volume of email messages received by the Association, an expedited personal response may not always be possible. The MSHSAA staff will respond first to more traditional means of communication such as telephone calls, written correspondence and faxes. The MSHSAA office can be reached at (573) 875-4880 during regular office hours. As time permits, staff will reply to email messages that include the sender's complete name, address and phone number. Questions regarding student eligibility or specific MSHSAA by-laws should first be directed to your local school administrator. By Board policy, our staff is not permitted to answer specific eligibility inquiries via email, and any follow-up questions to the MSHSAA should be done via telephone or written correspondence.



Proud Member  
National Federation of State High  
School Associations

# Sponsorship Support Vital to MSHSAA Programming

By Craig Long, CFO

Each year MSHSAA is fortunate to work with a portfolio of corporate sponsors at various programming levels. The financial support secured through these partnerships provides nearly ten percent of the Association's annual operating budget, and very much plays a role in our ability to limit the frequency with which other fees change. This ultimately benefits our member schools, and MSHSAA is grateful for the involvement of our corporate partners. The Association Board of Directors and Staff are also very grateful for the assistance of our member schools in those instances where a sponsorship program includes some level of attention at a district, sectional or quarterfinal contest. We know the effort it requires to host a playoff event in the first place, and we appreciate your help in incorporating Association sponsors into those events.



## Touchstone Energy<sup>®</sup> Cooperatives of Missouri

[www.touchstoneenergy.coop](http://www.touchstoneenergy.coop)

The longest tenured partner of the MSHSAA is Missouri's Touchstone Energy Cooperatives, administered through Associated Electric Cooperative. This partnership has been successful primarily because both organizations serve the same communities. The majority of our member schools and their communities are electric cooperative members and many of you have long standing relationships with your own electric cooperatives. As we travel the state for member school meetings, visits and contests, we see firsthand just how involved our electric cooperatives are with our member schools.

Missouri's Touchstone Energy Cooperatives are members of a national alliance of local, member-owned electric cooperatives providing high standards of service to members large and small. Touchstone Energy Cooperatives serve their members with integrity, accountability, innovation and a longstanding commitment to communities. That is why they have been a proud supporter of the Missouri State High School Activities Association for 15 years.

Missouri's electric cooperatives believe supporting our youth through education is vital in continuing to improve the quality of life in our communities. They provide education about important topics such as staying safe around electricity, saving energy and money and the cooperative difference through school programs, 4H organizations, FFA and many others. Many cooperatives also offer scholarships and free educational trips for high school students, such the CYCLE program in Jefferson City and the national Youth Tour program in Washington, D.C.

Through a new initiative, Members First, Missouri's electric cooperatives are working to educate our communities, especially our youth, on the value of being a member. Electric cooperatives are unique because they are owned and governed by their members, not some distant stockholders. If you pay your utility bill to an electric cooperative, you are not just a customer; you are an owner and a member. Visit [www.MembersFirst.coop](http://www.MembersFirst.coop) to discover all the benefits of your membership.



# Wilson<sup>®</sup>

Wilson Sporting Goods has been the most substantial partner of the MSHSAA through its participation in our official ball program. Wilson is currently in their sixth year as the official contest ball in the sports of football, basketball and soccer, and in their third year as the official contest ball in the sports of tennis, baseball and softball. Wilson's support has been vital to the programming administered through the Association.

We are excited this year to be partnering with the Missouri NEA in the promotion of their Teacher Words Matter program. This



is a great way for all of us to share stories and celebrate those teachers, coaches, and school staff that impacted each of us along our paths. Although also open to current high school students, the program is intended for your entire adult community to contribute. Missouri NEA will award \$500 prizes to the ten (10) best entries, and each winner will be invited to attend and receive their prizes from the Missouri NEA at the MSHSAA 2015 Show-Me Bowl in the Edward Jones Dome. The ceremonies will include multimedia on-field presentations.

You recently received in the mail a startup kit from the MSHSAA office. This mailer included several promotional posters and registration forms. In our efforts to help Missouri NEA share the invitation to participate, we hope you will have the opportunity to share this information within your school and community. The posters are designed to be displayed near your concession facilities in your various sports facilities this fall. These posters direct potential contributors to Missouri NEA's [TeacherWordsMatter.org](http://TeacherWordsMatter.org), where complete contest rules and submission forms are available. Submission forms for copying were also enclosed in the mailer in the event you believe your fans would find a hardcopy useful.

We know what it takes to get a school year started and we know that especially at this time of year everyone has their hands full. So we very much appreciate your help in spreading the information about Teacher Words Matter. What a great way to celebrate what your staff does for your community - by asking your community to share their memories of current and past staff. We think it will be a rewarding experience. Please contact the Missouri NEA directly if you wish additional participation and program information.

# MSHSAA Member School Status Changes - New Member Schools

The MSHSAA welcomes the following schools as new members for the 2015-2016 school year:

- Central (Kansas City) Middle School
- Frontier Language Academy Middle School (Kansas City)
- Northeast (Kansas City) Middle School
- Northland Christian HS (Kansas City)

It should be noted that the following schools are no longer a member of MSHSAA as of the 2015-16 school year:

- Construction Careers Charter HS (St. Louis)
- The College preparatory HS (St. Louis)

**The following schools are joining as Affiliate Registered Schools for the 2014-15 school year:**

School	Town	Sports/Activities Registered For
Academie Lafayette	Kansas City	Boys & Girls Basketball, Boys & Girls Soccer, and Boys Volleyball
Alton Jr. HS	Alton	Baseball, Boys & Girls Basketball, Cheerleading, Music, Scholar Bowl, and Girls Softball
Ava Victory Academy	Ava	Boys & Girls Basketball
Avilla Jr. HS	Avilla	Boys & Girls Basketball, Girls Volleyball and the nonhost school in co-ops for 11-Man Football and Boys & Girls Track
Ballard Jr. HS	Butler	Boys & Girls Basketball, Cheerleading, and Music
Barstow Jr. HS	Kansas City	Music and Boys & Girls Track
Bell City Jr. HS	Bell City	Baseball, Boys Basketball, Cheerleading, Music, Boys & Girls Track, and Girls Volleyball
Bishop Hogan Jr. HS	Chillicothe	Nonhost school in co-ops for 11-Man Football, Girls Softball, Boys & Girls Track, and Girls Volleyball
Bismarck Jr. HS	Bismarck	Baseball, Boys Basketball, Cheerleading, Music, Scholar Bowl, and Girls Volleyball
Blue Ridge Christian HS	Kansas City	Boys & Girls Basketball, Boys & Girls Track, and Girls Volleyball
Blue Ridge Jr. HS	Kansas City	Boys & Girls Track
Brittany Woods Jr. HS	University City	Music
Bronaugh Jr. HS	Bronaugh	Boys & Girls Basketball, Cheerleading, Boys & Girls Track, and the nonhost school in a co-op for 11-Man Football
Brookside Charter Jr. HS	Kansas City	Boys & Girls Basketball, Boys & Girls Soccer, Boys & Girls Track, and Girls Volleyball
Bunker HS	Bunker	Baseball, Boys & Girls Basketball, Cheerleading, Boys & Girls Cross Country, and Girls Volleyball
Callao Jr. HS	Callao	Nonhost school in co-ops for Boys & Girls Basketball, Scholar Bowl, and Boys & Girls Track
Centerville Jr. HS	Centerville	Boys & Girls Basketball and Girls Volleyball
Chaffee Jr. HS	Chaffee	Boys & Girls Basketball, Cheerleading, 11-Man Football, Music, and Boys & Girls Track
Christian Fellowship HS	Columbia	Boys & Girls Basketball, Music, Boys & Girls Soccer, Boys & Girls Track, and Girls Volleyball
Christian Fellowship Jr. HS	Columbia	Music and Boys & Girls Track
Clarkton Jr. HS	Clarkton	Baseball, Boys & Girls Basketball, Cheerleading, and Girls Volleyball
Climax Springs Jr. HS	Climax Springs	Boys & Girls Basketball and Cheerleading
Community Christian Academy HS	Barnhart	Boys & Girls Basketball
Cooter Jr. HS	Cooter	Baseball, Boys Basketball, Cheerleading, and Girls Volleyball
Dadeville Jr. HS	Dadeville	Boys & Girls Basketball
Davis Jr. HS	Clinton	Nonhost school in co-ops for Boys & Girls Basketball, 11-Man Football, and Boys & Girls Track
Delta Jr. HS	Delta	Baseball, Boys & Girls Basketball, Cheerleading, Boys & Girls Cross Country, and Music
Eagle Ridge HS	Cape Girardeau	Baseball, Boys & Girls Basketball, Boys & Girls Soccer, and Girls Volleyball
El Dorado Christian HS	El Dorado Springs	Boys & Girls Basketball and Boys & Girls Track
Ellington Jr. HS	Ellington	Baseball, Boys & Girls Basketball, Cheerleading, Boys & Girls Cross Country, Music, Scholar Bowl, Girls Softball, and Girls Volleyball
Eminence Jr. HS	Eminence	Baseball, Boys & Girls Basketball, Cheerleading, Boys & Girls Cross Country, Music, Scholar Bowl, Girls Softball, and Girls Volleyball
Everton Jr. HS	Everton	Boys & Girls Basketball, Girls Volleyball, and the nonhost school in a co-op for 11-Man Football
Ewing Marion Kauffman Jr. HS	Kansas City	Boys Cross Country, Boys & Girls Soccer, Speech and Debate, Boys & Girls Track, Girls Volleyball, and the non-host school in co-ops for Boys & Girls Basketball and Girls Cross Country
Ewing Marion Kauffman HS	Kansas City	Boys & Girls Basketball, Speech and Debate, Boys & Girls Track, and Girls Volleyball
Fairview Jr. HS	West Plains	Boys & Girls Basketball, Boys & Girls Cross Country, Scholar Bowl, and Boys & Girls Track
Faith Lutheran Jr. HS	Kirkville	Nonhost school in co-ops for Baseball, Boys & Girls Basketball, Cheerleading, Boys & Girls Cross Country, 11-Man Football, Boys & Girls Golf, Music, Scholar Bowl, Boys & Girls Soccer, Speech, Boys & Girls Tennis, Boys & Girls Track, and Wrestling
Gateway Science Academy HS	St. Louis	Baseball, Boys & Girls Basketball, Music, Boys & Girls Soccer, Girls Softball, Boys Tennis, Girls Volleyball, and Wrestling
Gideon Jr. HS	Gideon	Baseball, Boys Basketball, Cheerleading, and Girls Volleyball
Glenwood Jr. HS	West Plains	Nonhost school in a co-op for 11-Man Football
Greenwood Jr. HS	Springfield	Boys & Girls Basketball, Cheerleading, and Boys & Girls Track
Halfway Jr. HS	Halfway	Boys & Girls Basketball, Cheerleading, and Scholar Bowl
Heartland Christian HS	Belton	Boys & Girls Basketball, Scholar Bowl, and Girls Volleyball
Hermitage Jr. HS	Hermitage	Boys & Girls Basketball, Cheerleading, Boys & Girls Cross Country, and Boys & Girls Track
High Point Jr. HS	High Point	Non-host school in a co-op for Football
Holy Cross Jr. HS	Cuba	Non-host school in co-ops for Boys & Girls Basketball and Boys & Girls Track

School	Town	Sports/Activities Registered For
Howell Valley Jr. HS	West Plains	Boys & Girls Basketball, Boys & Girls Cross Country, Music, Boys & Girls Track, Girls Volleyball, and the nonhost school in a co-op for 11-Man Football
Humansville Jr. HS	Humansville	Boys & Girls Basketball, Cheerleading, Boys & Girls Cross Country, Music, and Boys & Girls Track
Hume Jr. HS	Hume	Boys & Girls Basketball
Hurley Jr. HS	Hurley	Baseball, Boys & Girls Basketball, Cheerleading, Boys & Girls Cross Country, Music, and Girls Volleyball
Immaculate Conception Jr. HS	Jackson	Nonhost school of co-ops for 11-Man Football, Boys & Girls Track and Wrestling
Immaculate Conception Jr. HS	Montgomery City	Nonhost school of co-ops for Boys & Girls Basketball, 11-Man Football, Girls Softball, Boys & Girls Track and Girls Volleyball
Immaculate Conception Jr. HS	New Madrid	Nonhost school of co-ops for Baseball, Boys & Girls Basketball, Cheerleading 11-Man Football, Music, Girls Volleyball, and Wrestling
Immaculate Conception Jr. HS	Old Monroe	Nonhost school of co-ops for Cheerleading, 11-Man Football, Girls Softball, and Boys & Girls Track
Immanuel Lutheran Jr. HS	Perryville	Nonhost school in co-ops for Boys & Girls Cross Country, 11-Man Football, and Boys & Girls Track
Immanuel Lutheran Jr. HS	Rosebud	Nonhost school in co-ops for Boys & Girls Cross Country, Boys & Girls Track and Wrestling
Jefferson (Conception Jct.) Jr. HS	Conception Jct.	Boys & Girls Basketball, Scholar Bowl, and Boys & Girls Track
Joel E. Barber Jr. HS	Lebanon	Baseball, Boys & Girls Basketball, Cheerleading, 11-Man Football, Music, Boys & Girls Track, Girls Volleyball, Wrestling, and the nonhost school in co-ops for Boys & Girls Cross Country
Junction Hill Jr. HS	West Plains	Boys & Girls Basketball, Boys & Girls Cross Country, Boys & Girls Track, and the nonhost school in co-op for 11-Man Football
Kelso Jr. HS	Benton	Nonhost school in co-ops for Boys & Girls Cross Country and Boys & Girls Track
Kingdom Christian Acad. Jr. HS	Fulton	Boys & Girls Cross Country, Boys & Girls Track, and Girls Volleyball
Kingdom Christian Academy HS	Fulton	Boys & Girls Cross Country and Boys Track
Kingston Jr. HS	Cadet	Baseball, Boys & Girls Basketball, Boys & Girls Cross Country, Scholar Bowl, Girls Volleyball, and the nonhost school in co-op for 11-Man Football
Kingston Jr. HS	Kingston	Nonhost school in co-ops for 11-Man Football, Girls Softball, and Boys & Girls Track
KIPP Endeavor Jr. HS	Kansas City	Boys & Girls Basketball, Boys & Girls Soccer, Girls Track, and Girls Volleyball
Kirbyville Jr. HS	Kirbyville	Baseball, Boys & Girls Basketball, and Girls Volleyball
Latham Jr. HS	Latham	Nonhost school in 11-Man Football
Lee Tolbert Academy Jr. HS	Kansas City	Boys & Girls Basketball, Music, Scholar Bowl, Boys & Girls Track, and Girls Volleyball
Leopold Jr. HS	Leopold	Boys Basketball and Girls Volleyball
Lesterville Jr. HS	Lesterville	Baseball, Boys & Girls Basketball, Cheerleading, and Girls Volleyball
Liberty Christian Academy HS	Wright City	Boys & Girls Basketball
Lighthouse Preparatory HS	Jefferson City	Scholar Bowl
Logos HS	St. Louis	Boys & Girls Basketball, Boys Soccer and Girls Volleyball
Lonedell Jr. HS	Lonedell	Nonhost school in co-ops for 11-Man Football and Boys & Girls Track
Lutheran School Association Jr. HS	Cole Camp	Nonhost school in co-ops for 11-Man Football, Boys Soccer and Boys & Girls Track
Mark Twain Jr. HS	Rueter	Nonhost school in co-ops for Baseball, Boys & Girls Basketball, and 11-Man Football
Martin Luther Jr. HS	Joplin	Nonhost school in co-ops for Boys & Girls Basketball, Cheerleading, and Girls Volleyball
Mary Immaculate Jr. HS	Kirksville	Boys & Girls Basketball and the nonhost school in co-ops for Boys & Girls Cross Country, 11-Man Football, Music, Scholar Bowl, Girls Softball, Boys & Girls Track, Girls Volleyball and Wrestling
Middle Grove Jr. HS	Madison	Nonhost school of co-ops for Boys & Girls Basketball and Boys & Girls Track
Mirabile Jr. HS	Mirabile	Nonhost school in co-ops for 11-Man Football and Boys & Girls Track
Montrose Jr. HS	Montrose	Boys & Girls Basketball
Mt. Zion Bible Jr. HS	Ava	Nonhost school in co-op for 11-Man Football
Nell Holcomb Jr. HS	Cape Girardeau	Music and the nonhost school in a co-ops for Baseball, Boys & Girls Cross Country, 11-Man Football, Boys & Girls Track, and Girls Volleyball
Newburg Jr. HS	Newburg	Boys & Girls Basketball, Music, and Boys & Girls Track
Niangua Jr. HS	Niangua	Boys & Girls Basketball, Cheerleading, Boys & Girls Cross Country, Music, and Girls Volleyball
North County Christian HS	Florissant	Baseball, Boys & Girls Basketball, Cheerleading, Boys Golf, Music, Boys Soccer, Boys & Girls Track, and Girls Volleyball
North Pemiscot Jr. HS	Wardell	Baseball, Boys Basketball, Cheerleading, Girls Volleyball
Oak Ridge Jr. HS	Oak Ridge	Boys Basketball, Cheerleading, Boys & Girls Cross Country, Music, and Girls Volleyball
Ozanam HS	Kansas City	Boys Basketball, Boys & Girls Cross Country, Boys & Girls Track
Pemiscot County R-3 Jr. HS	Caruthersville	Baseball, Boys Basketball, Girls Volleyball, and the nonhost school in a co-op for 11-Man Football
Pettis County R-XII Jr. HS	Sedalia	Nonhost school of co-ops for 8-Man Football and Girls Volleyball
Plaza Heights Christian Academy HS	Blue Springs	Boys & Girls Cross Country
Providence Classical Christian Jr. HS	St. Louis	Boys & Girls Cross Country
Providence Classical Christian Academy HS	St. Louis	Boys & Girls Basketball, Boys & Girls Cross Country, and Girls Volleyball
Renick Jr. HS	Renick	Boys & Girls Basketball, Cheerleading, Music, and Boys & Girls Track
Richards Jr. HS	West Plains	Music and the nonhost school in co-op for 11-Man Football
Richland Jr. HS	Essex	Baseball, Boys Basketball, Cheerleading, and Girls Volleyball
Richwoods Jr. HS	Richwoods	Nonhost school in co-ops for Boys & Girls Basketball and Girls Volleyball

School	Town	Sports/Activities Registered For
Risco Jr. HS	Risco	Baseball, Boys Basketball, Cheerleading, and Girls Volleyball
Riverview Christian HS	Forsyth	Boys & Girls Basketball
Saints Peter and Paul Jr. HS	Boonville	Boys & Girls Basketball, Scholar Bowl, Girls Volleyball, and the nonhost school in co-ops for 11-Man Football, Boys & Girls Track, and Wrestling
Scott County Central Jr. HS	Sikeston	Boys & Girls Basketball, Cheerleading, and Music
Sheldon Jr. HS	Sheldon	Boys & Girls Basketball and Boys & Girls Track
Shell Knob Jr. HS	Shell Knob	Boys & Girls Basketball, Cheerleading, Music, Scholar Bowl, Boys & Girls Track, Girls Volleyball, and the nonhost school in a co-op for 11-Man Football
Skyline Jr. HS	Norwood	Nonhost school in co-ops for Girls Basketball, 11-man Football, Girls Track, and Girls Volleyball
Skyline Jr. HS	Urbana	Baseball, Boys & Girls Basketball, Cheerleading, 11-Man Football, Scholar Bowl, Girls Softball, Boys & Girls Track, and Girls Volleyball
South City Prep Academy Jr. HS	St. Louis	Boys & Girls Basketball, Boys & Girls Track, and Girls Volleyball
South City Preparatory Academy HS	St. Louis	Boys & Girls Basketball, Boys & Girls Cross Country, Boys & Girls Track, and Girls Volleyball
South Iron Jr. HS	Annapolis	Baseball, Boys & Girls Basketball, Cheerleading, Boys & Girls Cross Country, and Girls Volleyball
St. Andrew Jr. HS	Tipton	Nonhost school in co-op for 11-Man Football
St. Brendan Jr. HS	Mexico	Boys & Girls Basketball, Cheerleading, and the nonhost school in co-ops for Boys & Girls Cross Country, 11-Man Football, Boys & Girls Track, and Girls Volleyball
St. Clement Jr. HS	Bowling Green	Nonhost school in co-ops for Boys & Girls Basketball, Cheerleading, Boys & Girls Cross Country, 11-Man Football, Girls Softball, Boys & Girls Track, and Girls Volleyball
St. Denis Jr. HS	Benton	Nonhost school in co-ops for 11-Man Football and Boys & Girls Track
St. Eustachius Jr. HS	Portageville	Nonhost school in co-ops for Baseball, 11-Man Football, and Girls Volleyball
St. George Jr. HS	Hermann	Nonhost school in co-ops for Boys & Girls Cross Country and Boys & Girls Track
St. John's Lutheran Jr. HS	Hannibal	Nonhost school in co-ops for Baseball, Boys & Girls Basketball, Cheerleading, Boys & Girls Cross Country, 11-Man Football, Music, Scholar Bowl, Speech, Boys & Girls Swimming, Boys & Girls Tennis, Boys & Girls Track, Boys & Girls Volleyball, and Wrestling
St. Joseph Jr. HS	Farmington	Boys & Girls Basketball, Cheerleading, Boys & Girls Soccer, Girls Volleyball, and the nonhost school in co-ops for Boys & Girls Cross Country, 11-Man Football, Boys & Girls Track, and Wrestling
St. Joseph Catholic Jr. HS	Martinsburg	Nonhost school in co-ops for 11-Man Football and Boys & Girls Track
St. Joseph Jr. HS	Pilot Grove	Nonhost school in co-ops for Boys & Girls Basketball and Scholar Bowl
St. Joseph Jr. HS	Salisbury	Boys & Girls Basketball, Boys & Girls Cross Country, Music, Boys & Girls Track, and the nonhost school in co-ops for 8-Man Football and Girls Softball
St. Louis Christian Academy	St. Louis	Boys & Girls Basketball, Boys Soccer, and Girls Volleyball
St. Mary's Jr. HS	Montrose	Nonhost school in co-ops for Boys Basketball, Cheerleading, and 11-Man Football
St. Patrick Catholic Jr. HS	Rolla	Nonhost school in co-ops for Boys & Girls Basketball, 11-Man Football, Boys & Girls Track, and Girls Volleyball
St. Paul Lutheran Jr. HS	Farmington	Boys & Girls Basketball, Girls Volleyball and the nonhost school in co-ops for Boys & Girls Cross Country, 11-Man Football, Boys & Girls Track, and Wrestling
St. Paul Lutheran Jr. HS	Jackson	Nonhost school in a co-ops for 11-Man Football and Wrestling
St. Paul Lutheran Jr. HS	Stover	Nonhost school in co-ops for Boys & Girls Basketball, Boys & Girls Track and Girls Volleyball
St. Pius X Jr. HS	Moberly	Boys & Girls Basketball, Cheerleading, Boys & Girls Cross Country, Music, Boys & Girls Track, and the nonhost school in co-ops for 11-Man Football, Girls Softball and Wrestling
St. Rose of Lima Catholic Jr. HS	DeSoto	Nonhost school in co-ops for girls cross country, 11-Man Football, Girls Golf, and Girls Track
St. Vincent Jr. HS	Perryville	Music
Stoutland Jr. HS	Stoutland	Boys & Girls Basketball
Strain-Japan Jr. HS	Sullivan	Boys & Girls Track
Success Jr. HS	Success	Boys Basketball and Boys Cross Country
Summersville Jr. HS	Summersville	Baseball, Boys & Girls Basketball, Cheerleading, Boys & Girls Cross Country, Girls Softball and Girls Volleyball
Summit Christian Academy Jr. HS	Lee's Summit	Boys & Girls Cross Country, 11-Man Football, Music, Speech, and Boys & Girls Track
Sunrise Jr. HS	DeSoto	Boys & Girls Basketball, Cheerleading, Music, Scholar Bowl, Girls Volleyball and the nonhost school in co-ops for Boys & Girls Cross Country, 11-Man Football, and Boys & Girls Track
T.S. Hill Jr. HS	Dexter	Baseball, Boys & Girls Basketball, Cheerleading, 11-Man Football, Music, Boys & Girls Track, Girls Volleyball, and Wrestling
Taneyville Jr. HS	Taneyville	Nonhost school in co-ops for Baseball and 11-Man Football
Thomas Jefferson HS	St. Louis	Boys & Girls Basketball, Boys & Girls Soccer, and Girls Volleyball
Thomas Jefferson Independent Jr. HS	Joplin	Boys & Girls Basketball, Boys & Girls Cross Country, Music, Scholar Bowl, Boys & Girls Track, and Girls Volleyball
Tower Grove Christian Academy HS	St. Louis	Baseball, Boys & Girls Basketball, Cheerleading, Boys & Girls Soccer, Boys & Girls Track, and Girls Volleyball
Tri-County Christian Jr. HS	Macon	Nonhost school in co-ops for Boys & Girls Basketball, Cheerleading, 11-Man Football, Music, Girls Softball, and Boys & Girls Track
Trinity Lutheran Jr. HS	Alma	Boys & Girls Basketball, Boy and Girls Track, Girls Volleyball, and the nonhost school in a co-op for 11-Man Football
Trinity Lutheran Jr. HS	Cape Girardeau	Music
Trinity Lutheran Jr. HS	Freistatt	Boys Basketball and the nonhost school in co-ops for Girls Basketball and Girls Volleyball
United in Christ Lutheran Jr. HS	Frohna	Music

School	Town	Sports/Activities Registered For
Valley Jr. HS	Caledonia	Boys & Girls Basketball, Music, and Girls Volleyball
Walnut Grove Jr. HS	Walnut Grove	Boys & Girls Basketball
Weaubleau Jr. HS	Weaubleau	Boys & Girls Basketball, Cheerleading, Boys & Girls Cross Country, and Boys & Girls Track
West County Jr. HS	Leadwood	Baseball, Boys & Girls Basketball, Cheerleading, Music, Scholar Bowl, and Girls Volleyball
Westview Jr. HS	Neosho	Nonhost school in co-ops for Cheerleading, Boys & Girls Cross Country, 11-Man Football, Boys & Girls Track, Boys & Girls Volleyball, and Wrestling
Westwood Baptist Academy HS	Poplar Bluff	Baseball, Boys & Girls Basketball, Music, Boys & Girls Soccer, Boys & Girls Track, and Girls Volleyball
Wheatland Jr. HS	Wheatland	Boys & Girls Basketball, Boys & Girls Track, and the nonhost school in co-ops for Boys & Girls Cross Country
Winona Jr. HS	Winona	Baseball, Boys Basketball, Cheerleading, Music, Scholar Bowl, Girls Softball, and Girls Volleyball
Zalma Jr. HS	Zalma	Boys Basketball, Cheerleading, Boys & Girls Cross Country, Music, and Girls Volleyball
Zion Lutheran Jr. HS	Bunceton	Nonhost school of co-ops for Boys & Girls Basketball, Cheerleading, Music, Dance Team, and Boys & Girls Track

**The following schools are joining as Home School Association Teams for the 2014-15 school year:**

School	Town	Sports/Activities Registered For
Central Panthers (Sr. High)	Arnold	Cheerleading, 11-Man Football,
Lighthouse Christian Homeschool Assn. (Sr. High)	Republic	Boys & Girls Basketball, Cheerleading, Boys & Girls Cross Country, 11-Man Football, Speech, and Boys & Girls Track
Southern Missouri RUSH (Jr. High)	Nixa	Girls Basketball and Girls Volleyball
Southern Missouri RUSH (Sr. High)	Nixa	Girls Basketball and Girls Volleyball
St. Louis Area Christian (Sr. High)	Washington	Boys & Girls Basketball, Boys Golf, Boys & Girls Soccer and Girls Volleyball
St. Louis Christian (Sr. High)	St. Louis	Boys Basketball and Girls Volleyball
St. Louis Patriots (Senior High)	St. Charles	Baseball

**The following school's name has been changed for the 2015-16 school year:**

- St. Louis Med/Bio Science HS changed its name to Collegiate School of Med/Bio Science HS

**It should be noted that the following schools have changed their membership status with MSHSAA for the 2015-16 school year:**

- Ballard HS 7-12 member changed to a 9-12 HS member & an affiliate Jr. HS registration
- Campbell HS (9-12) dropped their affiliate Jr. HS membership & became a 7-12 HS
- Chaffee HS 7-12 member changed to a 9-12 HS member & an affiliate Jr. HS registration
- Holden MS dropped their separate membership & became a 7-12 member with Holden HS
- Hurley HS 7-12 member changed to a 9-12 HS member & an affiliate Jr. HS registration
- Jefferson (Conception Jct.) HS 7-12 member changed to a 9-12 HS member & an affiliate Jr. HS registration

- Joel E. Barber MS dropped their Jr. HS membership & became an affiliate Jr. HS
- Knob Noster MS dropped their separate Jr. HS registration & became a 7-12 member with Knob Noster HS
- Lakel& HS (9-12) dropped their affiliate Jr. HS membership & became a 7-12 HS
- Lee A. Tolbert Academy Charter Jr. HS dropped full membership to become an affiliate Jr. HS
- Northeast (Kansas City) HS 7-12 member changed to a 9-12 HS & separate Jr. HS membership
- Prairie Home HS changed their 9-12 full membership & affiliate Jr. HS registration to a 7-12 full membership
- School of the Ozarks HS changed from a 9-12 member to a 7-12 member school, Jr. HS was not a member
- Skyline HS 7-12 member changed to a 9-12 HS & an affiliate Jr. HS registration
- St. Pius X (Moberly) dropped their full Jr. HS membership & became an affiliate registered Jr. HS
- Wheatl& HS 7-12 member changed to a 9-12 HS & an affiliate Jr. HS registration
- Zalma HS changed their 7-12 membership to a 9-12 member and an affiliate Jr. HS registration

**Interschool Scrimmages Not Permitted Before First Possible Contest**

By-Law 3.16.5 defines a game as any organized play between teams not of the same school. Whether or not officials are hired, admission charged, etc., are not factors in determining whether the play constitutes a game. So-called "scrimmage games" cannot be played before the date of the first allowable contest and such competition must be counted as a game on the school's schedule. Also, they may be played only if the school has not scheduled the maximum number of games allowed. This By-Law applies to all sports and all sport seasons.

The only exception to this is a new allowance for one Pre-Season Interschool Scrimmage in team sports (baseball, basketball, football, soccer, softball and volleyball) under certain defined conditions listed in By-Law 3.16.6 and Board Policy 25.

**Appeals Committee Summary**

**Held August 19, 2015**

The Appeals Committee heard 11 cases and ruled as follows:

- a. Denied appeals to grant unrestricted eligibility under provisions contained in MSHSAA By-Law 3.10.4.h, Hardship Application Transfer and granted restricted eligibility under Transfer Waiver, By-Law 3.10.4.i:
  1. Vianney High School
  2. Smith-Cotton High School (First Student)
  3. Kennett High School
  4. Raytown High School
  5. Lutheran St. Charles High School
- b. Granted appeal for unrestricted eligibility under provisions contained in MSHSAA By-Law 3.10.4.h, Hardship Application Transfer:
  1. John Burroughs High School
  2. Malden High School
  3. St. Charles West High School
  4. Raytown South High School
  5. Marquette High School
- c. Granted appeal for unrestricted eligibility under provisions contained in MSHSAA By-Law 3.10.4.h, Hardship Application Transfer after waiver status has been fulfilled:
  1. Smith-Cotton (Second Student)

# QUESTIONS & ANSWERS

The following are questions and answers pertaining to the MSHSAA Constitution and By-Laws and/or MSHSAA Board of Directors policy. These are provided as an aid in interpreting the rules and regulations which MSHSAA member schools have adopted. If you have a specific area and/or question which you would like explained, contact Dr. Kerwin Urhahn, MSHSAA executive director. Your attention is called to the fact questions and answers regarding interpretations of the MSHSAA Constitution and By-Laws appear following the Constitution Article or By-Law they relate to in the MSHSAA Official Handbook.

Question:

May our high school basketball team scrimmage against an area junior college team or against a local city league team comprised of high school age players?

Answer:

No in both cases. A school team may compete only against teams representing an MSHSAA member high school or teams from schools that are members of a like state association. The only exception to this would be an alumni game when conducted in accord with provisions of By-Law 3.12. This restriction applies to so-called scrimmages as well as to games. (By-Law 1.1)

Question:

We have a person who lives in our community who has been involved in cheerleading for many years but has never attended a college/university. Can this person serve as our head cheerleading coach?

Answer:

Yes. The standards for athletic coaches do not apply to cheerleading and dance team coaches. Any individual, however, hired to be a school cheerleading coach who does not possess a valid professional teaching certificate must satisfactorily complete an MSHSAA approved coaches education program and sports first aid. This is a prerequisite for approval to serve as a school cheerleading coach at any level at any MSHSAA member school in a subsequent school year. (By-Law 3.1)

Question:

Our school just won the Class 2 State Softball Championship. Our Booster Club would like to donate money to our school to enable the school to purchase a state championship commemorative ring. Is this permissible under the Amateur and Awards Requirement?

Answer:

Yes. The Amateur and Awards Requirement does permit the school to purchase an item of commemorative jewelry for each team member to recognize a specific team accomplishment. It should be noted that only the school may purchase the item. Therefore, the Booster Club must donate the funds directly to the school for appropriate use as determined by the principal. (By-Law 3.6.1)

Question:

Do students participating in interscholastic competitive/evaluative music and speech activities have to meet the MSHSAA minimum essential student eligibility requirements?

Answer:

Yes. Some have assumed that since these activities are generally a direct outgrowth of curricular programs the academic eligibility standards would not apply. As long as a student is limited to participating in a class setting during the regularly scheduled school day, that assumption is correct. However, music and speech activities that are conducted outside the regularly scheduled school day are considered to be extra-curricular in nature. Any extra-curricular competitive/evaluative music or speech event that involves students from two or more schools is considered to be an interscholastic event. Students participating in competitive/evaluative music or speech events must meet the MSHSAA minimum essential student eligibility requirements. This would not apply to events that are not competitive or evaluative, such as a parade that is not judged. (By-Laws 2.1 and 4.1)

Question:

Our school uses NovaNET for credit recovery, remedial and enhancement. Credit earned will be placed on the student's transcript and count toward graduation. I would like to know if courses through NovaNET could also count toward a student's eligibility?

Answer:

A course through NovaNET could count toward a student's academic eligibility under these conditions:

1. The student is doing the work through the school.
2. The work is all being done at a designated school site.
3. Credit must be placed on the student's transcript no later than the close of the semester in which the work was started. (By-Law 2.3)

Question:

We have a student who is academically ineligible the first semester. Our first semester ends on January 19 and the second semester begins on January 22. We have a basketball game scheduled for Saturday, January 20. When may she begin competing in interscholastic basketball contests?

Answer:

In accord with MSHSAA By-Law 2.3.10, if this student meets the academic requirement at the close of the first semester, she becomes eligible the fifth day classes are attended the second semester. In this specific case, she would become eligible to participate in interscholastic contests as of Friday, January 26.

Conversely, a student who is eligible the first semester but who fails to pass courses offering 3.00 units of credit or 80% of the maximum allowable credit whichever is greater that semester may compete until the fifth day of classes of the second semester. Using the semester dates above, a student in this situation would become ineligible as of Friday, January 26. (Grades posted later would not mitigate the use of an ineligible player after January 26.)

Exception: If an interscholastic contests is played before the formal opening of school and a student has become academically eligible for the fall semester and is eligible in all other respects he/she may be eligible to participate under this provision provided the student is properly enrolled in the member school. (By-Laws 2.3.10 and 2.3.11)

Question:

May a student participate in a non-school sponsored free throw contest during a season he or she is representing his or her school in the sport of basketball or in pass, punt and kick contests during a season he is representing his school in the sport of football?

Answer:

Yes. The MSHSAA Board of Directors interprets By-Law 3.13 as not restricting participation in non-school sponsored contests involving individual skills of a team sport such as free throw contests or pass, punt, and kick contests. This interpretation is based on the fact these activities involve only individual skills of a team sport and, as such, would not in themselves constitute a sport per se by normal definition. (By-Law 3.13)

## Information About NCAA Initial-Eligibility Changes

If you would like to read about NCAA Requirements, or to see the specific core-course breakdown, please visit one of the following web sites:

[www.ncaa.org](http://www.ncaa.org)

[www.ncaaclearinghouse.net](http://www.ncaaclearinghouse.net)

Questions or comments about the new rules may be submitted to:

[academics@ncaa.org](mailto:academics@ncaa.org)

Colleges will only accept ACT scores received from the national ACT office.



## 2016 MSHSAA Area Meetings

This year the MSHSAA staff shall be conducting Area Meetings across the state to gather input and discuss important issues facing the membership. These meetings have proved to be extremely helpful to your Board of Directors and the MSHSAA staff. The meetings will be held during January. The meetings will begin at 9 a.m. and end promptly at 11 a.m. Background information for the topics will be distributed at each site.

It is very important for superintendents, principals and athletic administrators to attend the meetings and take part in the developing role of your association and the events being sponsored for our students. Many issues have a fiscal impact on schools and the association as well as an impact on instructional time. The MSHSAA Board and staff look forward to seeing you at one of the eight sites.

## Team Shall Not be Removed in Protest

The attention of coaches is called to MSHSAA By-Law Section 5.5.2 which provides that a school whose coach removes a team from play in protest may be required to appear before the Board of Directors at its next meeting to show reason why the school shall not be suspended. Removal of a team in protest is considered a gross act of unsportsmanlike conduct. If an emergency occurs of some type that would make it advisable to discontinue the contest this should be done by mutual agreement of the two schools and the officials. If done in protest, the provisions of By-Law Section 5.5.2 will apply.

## MSHSAA Catastrophic Insurance and Successful Prevention Techniques

School administrators are reminded to be certain to file appropriate claims for potential catastrophic injuries. The current policy is presented by Mutual of Omaha. Coverage is an excess medical plan. For a more detailed description of the benefits of this policy, please refer to the summary sheet highlighting the benefits provided to all MSHSAA member schools in the August packet mailing. It should be noted that this plan does not include any liability coverage as it serves as medical only.

Along with securing the catastrophic medical coverage for their students, it is

imperative that school staffs have in place a solid risk management program. Facilities and equipment should be kept in good condition. Annual review of good risk management, standard operating procedures for injuries and first aid should occur with all staff. A continuing review of school policy for security, conduct of players, coaches and fans should occur.

Insurance will address the results of a situation. However, good planning and proper risk management are the only successful prevention techniques.

## 2015 State Cross Country Officials

Ken Asbury (Moberly), Dave Carlson (Columbia), Emry Dilday (Springfield), Kevin Ellis (Poplar Bluff), C. Donald Harris (Cape Girardeau), Glenn Jensen (Mexico), Dennis Licklider (Holts Summit), Jason Pyrah (Willard), Mike Reece (Ash Grove), Donnie Thomas (Jefferson City), Charley Welker (Monroe City), and Ron Whittaker (Mexico).

## Missouri Track and Cross Country Coaches Association Annual Clinic

The MTCCCA will hold its annual clinic Thursday through Saturday, December 10-12, 2015, at the Holiday Inn Executive Center in Columbia, Missouri. The clinic fee is \$100.00 for advanced registration or \$125.00 for registrations received after November 30, 2015. This fee includes

clinic attendance, clinic notes, all meals and breaks, Hall of Fame Luncheon and your 2016 MTCCCA dues. Continental Breakfast on Friday and Saturday, Hall of Fame Dinner, as well as the socials on Thursday and Friday evening are included in the registration fee.

Additional information, clinic speakers, online registration and hotel reservations can be obtained by going to the MTCCCA Clinic website located at: <https://www.regonline.com/builder/site/Default.aspx?EventID=1601621>

## Missouri Represented on National Federation Committees

The NFHS sponsors several national committees. The majority of these committees are committed to the formation and adoption of rules regulating specific interscholastic sports. The state of Missouri is well represented on the various committees. A hearty congratulation is extended to the following individuals for their involvement on these committees.

<i>Representative</i>	<i>School</i>	<i>Committee</i>
Toni Hill	Bloomfield	NFHS Board of Directors At-Large Representative
Dawn Callahan	Parkway West	Field Hockey Rules Committee
Harvey Richards	MSHSAA Staff	Football Rules Committee
Tom Kruse	Raymore-Peculiar	Football Rules Committee
Edward J. Moreno	Hillsboro	National Athletic Director Conference Advisory Committee
Kerwin Urhahn	MSHSAA Staff	NFHS National Council and Technology Committee
Stacy Schroeder	MSHSAA Staff	Swimming and Diving Rules Committee
Greg Stahl	MSHSAA Staff	Wrestling Rules Committee

## Length of Middle Level/Junior High Seasons

MSHSAA By-Law 3.29 permits flexible scheduling of middle level/junior high school sports seasons at any time during the school year to enable member schools to best utilize school facilities and coaching staffs.

The By-Law specifies that the sports seasons shall be 12 consecutive calendar weeks in length, beginning with the first organized practice with any part of a sports squad and ending with the last interscholastic contest in the sport concerned. It further provides that the sports season may be extended to a maximum of 14 consecutive calendar weeks in length whenever the Christmas/winter holiday period falls within the sports season. The sports season for 7th and 8th grade teams shall begin no earlier than the Monday of Standardized Calendar week Number Seven, and end with the last day of school in the spring.

Schools are reminded that a calendar week is interpreted as beginning with a Monday and ending with the following Sunday. Any part of a calendar week shall count as a full week. For example, if the junior high school basketball season culminates with a tournament which ends on a Tuesday, this entire calendar week would count as one of the 12-14 allowable weeks. In other words, a school could not have 12-14 weeks in addition to the tournament just because a season ended in the middle of a calendar week, in this case on Tuesday.

This provision for the scheduling of middle level/junior high school sports seasons has generally worked very well for member schools. However, from time to time, there has been some confusion in the application of this By-Law to the sport of basketball, particularly where a ninth grade student begins the season playing on a junior high school team and, at the end of the junior high season, moves up and plays as a member of a senior high school junior varsity or varsity team.

If a 9th grade basketball sports season is scheduled either concurrently with the senior high school season or so that it overlaps the beginning of the senior high school basketball season, individual ninth grade students may move up at the end of the junior high school season to play as a member of the senior high school junior varsity or varsity team. In such situations, the individual student may not participate in more than the total number of games (quarters) and tournaments equal to that played by the high school team on which the student plays and may not participate in a total number of weeks that exceeds that of the senior high school season. A ninth grade student in the situation described above could participate in a maximum of 20 or 19 consecutive calendar weeks, based upon the classification of the high school, from the first practice date of the first team on which the ninth grade student plays to last contest (or practice) for the last team on which the ninth grade student plays. In either case (quarters and tournaments or length of season), once the maximum is reached, the student must discontinue participation in both practices and game competition.

Any ninth grade student that plays with seventh and eighth grade students on a junior high/middle school basketball team must begin his/her 20 or 19 consecutive calendar weeks length of season as of the first practice day of the seventh and eighth graders whether these ninth graders are competing in another sport at that time or decide for whatever reason to come out late for the junior high/middle school team. The ninth grade students may move up and play with the senior high team when the junior high/middle school season concludes, but these ninth graders are limited by 20 or 19 consecutive calendar weeks and the games (quarters) and tournament limits of their high school team. Once one of these limits

is reached, the affected ninth grade student may no longer practice or compete with any school team. Ninth grade students may begin practice with the high school team on the first allowable high school practice date, but may not have practiced or competed with or against seventh and eighth graders earlier.

It is important all principals, athletic directors, and coaches who are responsible for middle level/junior high school and freshmen athletic programs be aware of these provisions so they may take advantage of and benefit from the flexible scheduling allowed in these school programs. At the same time administrators will be able to protect and maintain the eligibility of students who will be involved in these programs.

### School Administration Responsible for Fans at Home & Away Contests

By-Law 5.5.1 makes no distinction of whether a school is the visiting or home school as far as unsportsmanlike conduct is concerned. The school's administration is responsible for the conduct of its team, coaches, students and fans at any interscholastic event in which the school is participating.

The failure to uphold proper standards of conduct causes much of the criticism and adverse publicity of interscholastic athletic events. Furthermore, improper conduct hinders the achievement of the educational values derived from athletics. Only with the conscientious effort of all administrators, coaches, fans, and players can we achieve the most worthwhile objectives of interscholastic athletics.

## Leadership Training Institute (LTI) Offered

The NIAAA certification process and the Leadership Training Institute (LTI) offer athletic administrators a national process to develop leadership and professionalism. All three levels of certification require that one have at least a Bachelor's degree and send an application form and fee to the NIAAA in Indianapolis. The three levels of certification are:

The RAA (Registered Athletic Administrator) which is for those with little or no experience in athletic administration. The RAA level requires that one take LTI 501 and 502, obtain the verifying signature of a sponsor (athletic administrator, principal, superintendent, state athletic/activities association staff), approval of a PDF (Personal Data

Form) listing their experience, education, and contributions, and read the NIAAA Code of Ethics.

The CAA (Certified Athletic Administrator) is for those with two or more years of experience. It requires that one take LTI 501, 502 and 504), approval of the PDF, pass a CAA examination of multiple choice questions with at least 75 correct answers out of 100 questions, employed by (or retired from) a school, school district or state high school athletic/activities association in such capacity that the administration of interscholastic athletics is (was) among job responsibilities, and read the NIAAA Code of Ethics.

The CMAA (Certified Master Athletic Administrator) is for those with CAA certification.

This level of certification requires that one take LTI 501, 502, 504, and 506. Additionally, the candidate must complete a minimum of six (6) LTI electives, three (3) each from Leadership and Management Categories. The candidate must be employed so that administration of interscholastic athletics is/ was one's primary responsibility. In addition to approval of the PDF, submit supporting documentation of all requirements and points earned since CAA designation, the candidate must complete a practical written exercise, optional program implementation and read the NIAAA Code of Ethics.

*For certification forms or further information, please contact the NIAAA in Indianapolis at (317) 587-1450.*

## Annual Questionnaire to be Online in February

Each year, a questionnaire is prepared by the MSHSAA executive staff and distributed to member schools in early February. Items are placed on the annual questionnaire by the Board of Directors for the purpose of obtaining a consensus from member schools which will aid the Board in determining changes in the Constitution and By-Laws and

in the regulations governing the administration of district and state events which are desired by the membership.

The annual questionnaire will be online. School administrators are urged to discuss items included on the questionnaire with staff members whose programs would be affected to get their input before completing and returning the questionnaire.

The Board of Directors relies quite extensively on the responses received to the questionnaire items when making important decisions that affect your interscholastic program. All administrators are urged to participate in this decision making process of your association by completing and returning the questionnaire.

## Appeals Committee Summary

*Held September 2, 2015*

Two cases were reviewed and decided on the basis of documentation presented by the Associate Executive Director to the Appeals Committee:

- a. Denied appeal to grant unrestricted eligibility under provisions contained in MSHSAA By-Law 3.10.4.h, Hardship Application Transfer and granted restricted eligibility under Transfer Waiver, By-Law 3.10.4.i:
  1. Lutheran St. Charles HS
- b. Granted appeal for unrestricted eligibility under provisions contained in MSHSAA By-Law 3.10.4.h, Hardship Application Transfers:
  1. Southland HS

The Appeals Committee heard 10 cases and ruled as follows:

- a. Granted appeals for unrestricted eligibility under provisions contained in MSHSAA By-Law 3.10.4.h, Hardship Application Transfers:
  1. Lee's Summit North HS
  2. Father Tolton Regional Catholic HS (1st student appeal)
  3. Savannah HS
  4. MICDS HS
  5. Keytesville HS
  6. Sacred Heart HS
- b. Denied appeals to grant unrestricted eligibility under provisions contained in MSHSAA By-Law 3.10.4.h, Hardship Transfer Applications and granted restricted eligibility under Transfer Waiver, By-Law 3.10.4.i:
  1. Father Tolton Regional Catholic HS (2nd student appeal)
  2. Southwest (Livingston County) HS
  3. Bishop LeBlond HS
- c. Denied appeal to grant eligibility under provisions of Article IV, Section 6-p, Hardship Provision of the MSHSAA Constitution:
  1. Hickman HS

## Multiple-Game Events Conducted in Missouri

The following provisions must be met in multiple-game events conducted in Missouri in the sports of basketball, soccer and football organized by a college or university, a member school(s), or a non-school entity co-sponsored by an MSHSAA member school in order for MSHSAA member schools to participate:

- a. In all games involving MSHSAA member schools (one or both opponents), the designated host school shall be an MSHSAA member school, or the event organizer can designate an MSHSAA member school as the host of the overall event. If an MSHSAA member school is designated as the overall host of the event (i.e. initiating contracts between schools for all games, contracting all game officials and other administrative responsibilities), this overall event host school shall file a detailed financial summary of the event with the participating schools and the MSHSAA Office.
- b. Game officials shall be approved by the participating schools, contracted directly by the host school administration, and registered with the MSHSAA in accord with By-Law 6.1.2.

- c. All schools participating against MSHSAA member schools shall meet the provisions of 3.18.1. It is the responsibility of the MSHSAA member host school to confirm this status of the opposing school(s).
- d. The event organizer shall file a financial report with the MSHSAA office within 90 days following the event. This is the responsibility of the event organizer. When a high school contest is held "in conjunction" with an intercollegiate contest(s), a financial report is not necessary.
- e. Games that involve schools from other states may have state association requirements that are beyond these listed above. It is the responsibility of the MSHSAA member host school(s) and the event organizer to insure that these rules and all those previously mentioned are met.

- f. The event organizer shall insure that the multiple-game event conducted in Missouri is approved at least 90 days in advance by MSHSAA (and the NFHS, if necessary).

- g. A tournament or meet sponsored by a college or university involving only Missouri schools, must adhere to the above standards and shall have the approval of the Board of Directors (via Non-School Sponsored Event Sanctioning Procedure) the a minimum of 30 days prior to the first date of the event.

*Editor's Note: A contest is "in conjunction" with an intercollegiate contest if the college and the high school events are conducted in the same sessions, tickets are sold as a single event, and the playing facility is not cleared between the contests. Items d and e reflect NCAA requirements."*

## 2014-15 MSHSAA 5-Star Leadership Schools

The following MSHSAA junior and senior high schools have qualified to be recognized as “5-Star Leadership Schools” for the 2014-15 school year for excellence in the promotion of citizenship, sportsmanship, leadership and scholarship through their interscholastic activities programs. This program is made possible due to the combined efforts of MSHSAA, the National Association of Intercollegiate Athletics (NAIA) and Musco Sports Lighting.

Requirements to become a 5-Star Leadership School include:

1. Attendance of a school team at the MSHSAA Sportsmanship Summit
2. Completion of the NAIA Champions of Character Online Training by all sports and activity head coaches and directors
3. Viewing of the Champions of Character DVD video chapters by your coaches, parents and activity participants each season
4. Attendance of your Athletic/Activities Director at the MIAAA Spring Conference
5. Completion of requirements to become a MSHSAA Leadership School by collecting points and completing and submitting the application book by the April 15 deadline.

### 2014-15 5-Star Leadership Schools

- Bayless High School
- Bloomfield High School
- Blue Springs South High School
- DeSoto High School/Junior High
- Francis Howell Central High School
- Francis Howell High School
- Glendale High School
- Holden High School
- Kickapoo High School
- Nixa High School
- Platte County High School

## Inter-State Studio is Official MSHSAA Photography

MSHSAA has partnered with Inter-State Studio of Sedalia to be the official photography vendor of MSHSAA Championships.

Inter-state has set up a website to view the pictures taken at this year's championships.

When Inter-State Studio and Publish-

ing Co. was founded, the concept was simple; take great photos of students for their school and parents. Inter-State has focused on providing quality photographs and services, as well as outstanding customer service.

Continuing to be an innovative leader in the industry since Guy Snyder founded

the company in 1933, today, Inter-state is North America's largest family-owned school photography and yearbook publishing company.

With offices located in 30 states, Inter-State is headquartered in Sedalia and has been proud to call it their home for over 80 years.

<i>To view pictures, go to selected page, enter a valid e-mail address and the password listed below the link:</i>	
<b>Girls Golf</b>	<a href="http://InterStateStudioPublishingCo.shootproof.com/gallery/1796070">http://InterStateStudioPublishingCo.shootproof.com/gallery/1796070</a> Password: <i>Girls_Golf</i>
<b>Girls Softball</b>	<a href="http://InterStateStudioPublishingCo.shootproof.com/gallery/1796074">http://InterStateStudioPublishingCo.shootproof.com/gallery/1796074</a> Password: <i>Fall Softball</i>
<b>Girls Tennis</b>	<a href="http://InterStateStudioPublishingCo.shootproof.com/gallery/1796077">http://InterStateStudioPublishingCo.shootproof.com/gallery/1796077</a> Password: <i>Girls Tennis</i>
<b>Cross Country</b>	<a href="http://InterStateStudioPublishingCo.shootproof.com/gallery/1796085">http://InterStateStudioPublishingCo.shootproof.com/gallery/1796085</a> Password: <i>Cross Country</i>
<b>Girls Volleyball</b>	<a href="http://InterStateStudioPublishingCo.shootproof.com/gallery/1796081">http://InterStateStudioPublishingCo.shootproof.com/gallery/1796081</a> Password: <i>Girls Volleyball</i>
<b>Boys Swimming &amp; Diving</b>	<a href="http://InterStateStudioPublishingCo.shootproof.com/gallery/1796089">http://InterStateStudioPublishingCo.shootproof.com/gallery/1796089</a> Password: <i>Boys Swimming &amp; Diving</i>
<b>Boys Soccer</b>	<a href="http://InterStateStudioPublishingCo.shootproof.com/gallery/1796092">http://InterStateStudioPublishingCo.shootproof.com/gallery/1796092</a> Password: <i>Boys Soccer</i>
<b>Football</b>	<a href="http://InterStateStudioPublishingCo.shootproof.com/gallery/1796094">http://InterStateStudioPublishingCo.shootproof.com/gallery/1796094</a> Password: <i>Show Me Bowl</i>



## Joe Pappas Receives NFHS Outstanding Music Educator of the Year Award

Each year, the NFHS Music Association gives its Outstanding Music Educator of the Year award to one recipient in each state. This year, MSHSAA is pleased to recognize Joseph Pappas, of Festus, Missouri, as the 2015-2016 Missouri state award recipient.



Joe earned a Bachelor of Music Education and Master of Music Education at Southeast Missouri State University in 1972 and 1979. He began his teaching career in 1972 at Bell City School District. Over his forty-four year career in music education, Joe has also served as the music director at Scott City, Mexico and the Rockwood School Districts. He is also the Supervisor of Instrumental Music

Student Teaching at Southeast Missouri State University in Cape Girardeau and an adjunct music instructor at Jefferson College in Hillsboro.

Pappas has contributed in numerous ways to the promotion and development of musicians and music education programs at all levels. Many of the ensembles under his direction have performed at the Missouri Bandmasters Association convention and have earned highest honors in many state and regional festivals. He has received many honors and awards throughout his career including the St. Louis Suburban MMEA Merit Award (2015), Alumni Merit Award (2012), the MSHSAA Distinguished Service Award (1995) as well as serving as guest conductor/lecturer in Costa Rica and Austria.

Joe is actively involved and maintains membership in several professional music and education organizations such as the National Association for Music Education (NAfME), the Missouri Music Educators Association (MMEA), Missouri

Bandmasters Association (MBA), the National Education Association (NEA), the American Society of Composers, Authors and Publishers (ASCAP) and the National Association of Music Publishers. He also serves as the midwest coordinator for the Music in the Parks, Festivals of Music and Six Flags Music Festivals and is owner/publisher of JPM Music Publications. Joe has served since 1979 as a MSHSAA District Music Festival Manager and is an active composer and publisher. He has written instrumental sight reading selections for use at the MSHSAA Large Group Music Festival and many of his solo and small ensemble works appear on the prescribed graded music list for Missouri and other states.

## Winifred Crock Receives NFHS Outstanding Music Educator of the Year Award for Section V

Each year the NFHS Music Association give its Outstanding Music Educator of the Year award to one recipient in each of their eight board sections. This year, MSHSAA is pleased to recognize Winifred Crock, retired string director from Parkway Central High School in Chesterfield, as the 2015-16 Section V award recipient.



Section V represents the states of Kansas, Minnesota, Missouri, Nebraska, North Dakota and South Dakota.

Winifred earned a Bachelor of Music Education at Southern Illinois University-Edwardsville in 1982 and a Master of Music Education at Kent State University in 1985. She began her teaching career in 1985-86 in Elyria, Ohio and in 1986 she became the elementary school string teacher with the Parkway School District, in Chesterfield, Missouri. In 1989, Winifred became the high school orchestra director at Parkway Central High School, a position she held until her retirement in the spring of 2015. She has also maintained a

private violin studio since 1977. Under her direction the Parkway Central orchestra program experienced tremendous success and growth. The orchestra performed at the Missouri Music Educators Association conference five times with the most recent occurring in 2013. The ensemble and student members have received numerous honors and awards including seven students selected to the National Association for Music Education National Orchestra in 2014.

Winifred has contributed in multiple ways to the betterment of high school music programs. She has served on local, state and national committees and continues to work towards the advancement of string education in general. Her work in the development of music theory and class piano curriculum has helped establish Parkway Central High School as a top tier music program in the Midwest.

Crock's involvement in the Suzuki Association of the Americas (SAA) has resulted in the publication of materials for Suzuki in the schools, a series of teaching and training courses through the SAA and the production of materials for teachers available via the web. These contributions have resulted in the publication of over 30 articles with the SAA Journal. Winifred has spoken at every American String Teacher Association (ASTA) and SAA confer-

ence for over a decade and has been the featured string clinician at TMEA, MMEA and other music conferences in over 20 states, Canada, Lebanon and New Zealand. In 2010, Crock was the conductor of the Suzuki Association of the Americas International Suzuki Youth Orchestra II. She continues to write, publish and share materials to assist others in teaching and learning. She works with and mentors teachers locally, nationally and internationally in facilitating their teaching and learning.

Crock believes that the high school music experience is one of the most important educational experiences that young people can have. She believes that while excellence in music is vital, the life lessons learned through musical experiences are even more valuable. While a number of her students have gone on to prestigious music careers in performance and education, she believes that some of her most important teaching is to those students who will not become professional musicians but will continue as life long learners and consumers of music.

**September 2015 Board of Directors Summary****Held September 16, 2015**

Board members present were Schmidt, Churchwell, Kinder, Beem, Linneman, Hill, Johnson, Wilson, Eaton, and Soden. MSHSAA staff present were Urhahn, Richards, Schroeder, Davis, Maurer, Long, Garner, Stahl, West, and Mayse (general counsel).

Motion Kinder, second Eaton, to go into closed session for matters involving legal actions or litigation involving MSHSAA including any confidential or privileged communications between MSHSAA and its attorney. Section 610.021(1) R.S.Mo. Motion passed 10-0 on a roll call vote with members Schmidt, Churchwell, Kinder, Beem, Linneman, Hill, Johnson, Wilson, Eaton, and Soden voting yes.

Motion Churchwell, second Beem, to exit out of closed session. Motion passed 10-0 on a roll call vote with members Schmidt, Churchwell, Kinder, Beem, Linneman, Hill, Johnson, Wilson, Eaton, and Soden voting yes.

Approved the minutes of the June 18, 2015 Board of Directors Meeting and the August 19, 2015 and the September 2, 2015 meetings of the MSHSAA Appeals Committee.

Approved the general consent items as presented.

Transfer Waiver Applications (By-Law 3.10.4.i) (Duplicate school names indicates an additional transfer(s) student(s) for that school): African Centered College Preparatory, Aurora, Barstow, Barstow, Barstow, Barstow, Bell City, Benton, Benton, Bishop LeBlond, Bradleyville, Brentwood, Brentwood, Calvary Lutheran, Calvary Lutheran, Calvary Lutheran, Carnahan, Carnahan, Carnahan, Carnahan, Carthage Junior, Central (Cape Girardeau), Central (Park Hills), Central (Springfield), Central (Springfield), Central (Springfield), Central Academy, Christian, Christian, Christian, Christian Brothers College, Christian Brothers College, Christian Brothers College, Christian Brothers College, Clayton, College Heights Christian, College Heights Christian, College Heights Christian, College Heights Christian, College Heights Christian, College Heights Christian, College Heights Christian, College Heights Christian, College Heights Christian, Columbia Independent, Conway, Cor Jesu Academy, Crane, Cuba, DeSmet, DeSmet, DeSmet, Doniphan, Duchesne, Duchesne, East Buchanan, Eureka, Eureka, Fair Grove, Father Tolton Regional Catholic, Fayette, Forsyth, Ft. Zumwalt West, Gentry, Gentry, Greenwood, Greenwood, Hallsville, Hannibal, Harrisonville, Harrisonville, Hazelwood Central, Hazelwood Central, Hickman, Hillcrest, Hillcrest, Hillcrest, Hillsboro, Hillsboro, Hogan Prep Academy Charter, Hogan Prep Academy Charter, Incarnate Word Academy, Jackson, Jackson, Jackson, Jackson, Jasper, Jefferson City, Jennings, Jennings, John F. Kennedy, John F. Kennedy,

John F. Kennedy, John F. Kennedy, John F. Kennedy, Keytesville, Kickapoo, Kirkwood, Knob Noster, Knob Noster, Ladue Horton Watkins, Lafayette (St. Joseph), Lafayette (Wildwood), Lafayette (Wildwood), Lathrop, Lebanon, Lift for Life Academy Charter, Lift for Life Academy Charter, Lift for Life Academy Charter, Lindbergh, Lutheran (Kansas City), Lutheran (Kansas City), Lutheran North, Lutheran North, Lutheran North, Lutheran North, Lutheran North, Lutheran St. Charles, Lutheran St. Charles, Lutheran St. Charles, Lutheran St. Charles, Lutheran St. Charles, Marion C. Early, Mark Twain, Mark Twain, McKinley Classical Leadership, Mehlville, MICDS, Mid-Buchanan, Miller Career Academy, Mound City, Newtown-Harris, Nodaway-Holt, Normandy Collaborative, Normandy Collaborative, North (Joplin), North Harrison, North Platte, North Technical, North Technical, North Technical, North Technical, Notre Dame (Cape Girardeau), Notre Dame (Cape Girardeau), Notre Dame (Cape Girardeau), Notre Dame (St. Louis), Notre Dame (St. Louis), Notre Dame (St. Louis), Oak Park, Oak Park, Oak Park, O'Hara, O'Hara, Oran, Oran, Ozark, Ozark, Pacific, Park Hill South, Parkway North, Parkway North, Parkway North, Parkway South, Parkway South, Parkway South, Parkway West, Parkway West, Parkway West, Paseo Academy, Platte County, Principia, Republic, Rock Port, Rockhurst, Rockhurst, Sarcoxie, Savannah, Saxony Lutheran, Seneca, Smith-Cotton, Smith-Cotton, Smithton (Columbia), South (Joplin), South (Joplin), Southland, Southland, Springfield Catholic, St. Dominic, St. Dominic, St. Francis Borgia, St. Joseph Christian, St. Joseph's Academy, St. Joseph's Academy, St. Joseph's Academy, St. Joseph's Academy, St. Joseph's Academy, St. Paul Lutheran (Farmington), St. Paul Lutheran (Farmington), St. Pius X (Festus), St. Pius X (Festus), St. Pius X (Festus), St. Pius X (Kansas City), St. Pius X (Kansas City), St. Pius X (Kansas City), St. Pius X (Kansas City), St. Teresa's Academy, St. Vincent, Staley, Ste. Genevieve, Ste. Genevieve, Summit Christian Academy, Summit Christian Academy, Summit Christian Academy, Tarkio, Tarkio, Tarkio, Thayer, Thayer, Thayer, Thayer, Thomas Jefferson Independent, Thomas Jefferson Independent, Timberland, Timberland, Trenton, Trinity Catholic, Trinity Catholic, Union, Ursuline Academy, Ursuline Academy, Valle Catholic, Valle Catholic, Van-Far, Villa Duchesne, Visitation Academy, Visitation Academy, Visitation Academy, Warsaw, Warsaw,

Washington, Washington, Washington, Webster Groves, Westminster Christian Academy, Wheaton, Wheaton, Wheaton, Whitfield, Whitfield, Winfield, Winfield, and Winfield.

Transfer Hardship Applications (By-Law 3.10.4.h) (Duplicate school names indicates an additional transfer(s) student(s) for that school): Adrian, Adrian, Affton, Affton, Appleton City, Appleton City, Appleton City, Arcadia Valley, Battle, Benton, Bishop LeBlond, Blue Eye, Blue Springs, Blue Springs South, Blue Springs South, Blue Springs South, Bourbon, Bolivar, Bolivar, Boonville, Bourbon, Bourbon, Bowling Green, Bradleyville, Branson, Branson Junior, Brashear, Braymer, Brookfield, Brookfield, Bucklin, Buffalo, Cabool Junior, California, Calvary Lutheran, Camdenton, Campbell, Cardinal Ritter, Carl Junction, Carnahan, Carnahan, Carnahan, Carnahan, Carnahan, Carnahan, Carnahan, Carnahan, Carthage, Cassville, Center, Center, Central (Cape Girardeau), Central (Cape Girardeau), Central (Cape Girardeau) Junior, Central (New Madrid County), Central (Springfield), Central (Springfield), Central (St. Joseph), Central (St. Joseph), Central (St. Joseph), Centralia, Centralia, Chadwick, Chilhowee, Chilhowee, Clayton, Clayton, Clearwater, Cleveland NJROTC, Cleveland NJROTC, Cleveland NJROTC, Clever, Cor Jesu Academy, Crystal City, DeSoto, DeSoto, Diamond, Doniphan, Doniphan, Dora, Duchesne, East Carter, East Prairie, East Prairie, East Prairie Junior, El Dorado Springs, El Dorado Springs, El Dorado Springs, El Dorado Springs, Eugene, Eureka, Excelsior Springs, Exeter, Exeter, Fair Grove, Fair Grove, Fair Grove, Farmington, Father Tolton Regional Catholic, Father Tolton Regional Catholic, Father Tolton Regional Catholic, Forsyth, Forsyth, Fox, Francis Howell, Francis Howell Central, Francis Howell Central, Ft. Zumwalt East, Ft. Zumwalt East, Ft. Zumwalt North, Ft. Zumwalt North, Ft. Zumwalt South, Ft. Zumwalt South, Ft. Zumwalt West, Ft. Zumwalt West, Ft. Zumwalt West, Ft. Zumwalt West, Galena, Glendale, Glendale, Glendale, Grain Valley, Grandview, Grandview, Hale, Hale, Hancock, Hannibal, Hannibal, Hannibal, Hardin-Central, Harrisburg, Hartville, Hartville, Hazelwood Central, Hazelwood Central, Hazelwood Central, Hazelwood Central, Hermann, Holt, Holt, Houston, Humansville, Hurley, Jasper, John Burroughs, Joplin, Joplin, Joplin, Kearney, Kelly, Kelly, Kennett, Keytesville, Kickapoo, Kickapoo, King City, Kirksville, Kirksville, Kirkwood, Knob Noster, La Plata, Ladue Horton Watkins, Lafayette (Wildwood), Lathrop, Lathrop, Lathrop, Lathrop, Lawson, Lawson, Lebanon, Lebanon, Lee's Summit

**Continued on page 13**

**September 2015 Board of Directors Meeting Summary, con't from page 12**

North, Lee's Summit North, Lewis and Clark, Lewis and Clark, Liberty (Wentzville), Liberty North, Liberty North, Lincoln College Prep, Lincoln College Prep, Lindbergh, Lutheran (Kansas City), Lutheran North, Lutheran North, Lutheran South, Lutheran St. Charles, Lutheran St. Charles, Lutheran St. Charles, Lutheran St. Charles, Macon, Macon, Macon, Malden, Marceline, Marion C. Early, Marionville, Marquette, Marshall, Marshfield, Maysville, McCluer, McCluer, McCluer, McCluer, McCluer North, McCluer North, McDonald County, Mehlville, Mehlville, Mexico, MICDS, MICDS, Milan, Milan, Miller, Miller, Miller Career Academy, Monroe City, Montgomery County, Mt. Vernon, Naylor, Naylor, Neosho, Neosho, Neosho, Nevada, Nevada, Nevada, Newburg, Newburg, Niangua, Nixa, Nixa, Norborne, North Technical, North Technical, North Technical, North Technical, North Technical, North Technical, North Technical, North Technical, Northeast Nodaway, Northwest (Hughesville), Northwestern (Mendon), Notre Dame (Cape Girardeau), Notre Dame (St. Louis), Oak Grove, Oak Park, Oak Park, Oak Park, Oakland Middle, Oakland Middle, Oakville, Odessa, Osceola, Osceola, Osceola, Owensville, Owensville, Ozark, Paris, Park Hill, Park Hill, Park Hill, Park Hill South, Parkview, Parkview, Parkview, Parkway Central, Parkway Central, Parkway Central, Parkway Central, Parkway North, Parkway South, Parkway South, Parkway West, Parkway West, Parkway West, Pattonsburg, Pattonsburg, Pattonville, Pattonville, Pattonville, Platte County, Platte County, Platte County, Plattsburg, Plattsburg, Plattsburg, Plattsburg, Pleasant Hope, Polo, Polo, Potosi, Puxico, Raymore-Peculiar, Raytown, Raytown South, Raytown South, Raytown South, Raytown South, Raytown South, Reeds Spring, Republic, Richland, Richmond, Rock Bridge, Rock Bridge, Rock Bridge, Rolla, Rolla, Russellville, Sacred Heart, Salem, Salem, Salem, Salem, Salisbury, Santa Fe, Savannah, Saxony Lutheran, Saxony Lutheran, School of the Ozarks, School of the Ozarks, School of the Ozarks, School of the Ozarks, Seckman, Seckman, Seneca, Seymour, Seymour, Seymour, Skyline, Skyline, Slater, Smith-Cotton, Smith-Cotton, Smith-Cotton, Soldan International Studies (12 transfers), South Callaway, South Shelby, Southland, Southwest (Livingston County), Southwest (Washburn), Spokane, St. Charles, St. Charles West, St. Dominic, St. Joseph's Academy, St. Joseph's Academy, St. Mary's (St. Louis), St. Mary's (St. Louis), St. Mary's (St. Louis), St. Mary's (St. Louis), St. Pius X (Festus), Staley, Staley, Ste. Genevieve, Stockton, Stockton, Stover, Sullivan,

Sullivan, Sullivan, Summit Christian Academy, Thayer, The Fulton School at St. Albans, Thomas Jefferson, Timberland, Timberland, Trenton, Trenton, Trenton, Trinity Catholic, Troy Buchanan, Truman, Truman, Truman, University City, University City, University City, Valle Catholic, Valley Park, Vashon, Vashon, Vashon, Vashon, Vashon, Vashon, Vianney, Vianney, Vianney, Viburnum, Walnut Grove, Warrenton, Washington, Washington, Waynesville, Waynesville, Waynesville, Waynesville, Waynesville, Webb City, Webb City, Webster Groves, Webster Groves, West Plains, West Plains, West Plains, West Plains, West Plains, Whitfield, William Chrisman, Willow Springs, Windsor (Imperial), and Winfield.

**Self-Reported Violations and/or Requests for Lesser Penalties (By-Law 5.4):**

Recommend action by school be accepted with reprimand issued and administration acknowledged for self-reporting - Battle - Self-reported a violation of By-Law 6.1.1, accepted school's actions, no forfeitures required by the school; Billings - Self-reported a violation of By-Law 3.15.1.d, no forfeits are required, student may be reinstated after sitting out one practice and may not participate in school preseason scrimmage; Bishop LeBlond - Self-reported a violation of the MSHSAA Tennis Manual Rank Order by moving some athletes up more than one spot on four different playing dates, school coach counseled regarding procedures and will be withheld from coaching the first two tennis matches of the 2015-16 boys tennis season, school to forfeit all matches involving the incorrect ranking order; Bradleyville - Self-reported a violation of 3.9, accepted school's actions, school to forfeit contest played by ineligible players, students' eligibility to be reinstated after sitting out equal contests; California - Self-reported a violation of By-Law 3.15.1.d, no forfeits are required, student may be reinstated after sitting out one practice and may not participate in school preseason scrimmage; CBC - Self-reported a violation of By-Law 3.15.1.d, no forfeits are required, any student who attended the camp may be reinstated after sitting out one practice and may not participate in school preseason scrimmage; Central (Springfield) - Self-reported a violation of By-law 2.8.2, accepted school's actions, school to forfeit any points ineligible student gained, student is ineligible for all varsity track and field season based upon school's request for a lesser penalty; Central (Springfield) - Self-reported a violation of By-Law 1.7, accepted school's actions, no forfeitures required; Central (Springfield) - Self-reported a violation of By-Law 3.15.1.b, no forfeits are required, student may be reinstated after sitting out three practices and may not participate in school preseason scrimmage; Central Academy of Excellence - Self-reported a violation of By-Law 3.5, accepted school's

actions, no forfeiture required as the contest was lost, student's eligibility has expired; Chaminade - Self-reported a violation of By-Law 3.15.7.a by advertising a school basketball camp on the website as being available to boys by invitation only, upon detection of the wording of the camp by a website coordinator it was removed from the website, no forfeits are required, students' eligibility is to be reinstated; Collegiate School of Med/Bio Science - Self-reported a violation of By-Laws 3.10.4 and 3.4, accepted school's actions, no forfeitures are required, student now eligible; Francis Howell - Self-reported a violation of By-law 1.5.2, accept school's action, no forfeitures required, coach is to be suspended from coaching for one week due to violation; Fredericktown - Self-reported a violation of By-Law 3.15.1.b, accepted school actions, no forfeitures required, students' eligibility may be reinstated and accept school's consequences against the coach in lieu of students; Glendale - Self-reported a violation of By-Law 3.15.1.d, no forfeits are required, student may be reinstated after sitting out one practice and may not participate in school preseason scrimmage; Jefferson City - Self-reported two violations of By-Law 3.15.1.d, no forfeits are required, students may be reinstated after sitting out one practice and may not participate in school preseason scrimmage; Kickapoo - Self-reported a violation of By-Law 3.15.1.d, no forfeits are required, student may be reinstated after sitting out one practice and may not participate in school preseason scrimmage; Marionville - Self-reported a violation of By-Law 3.15.1.b, accepted school actions, no forfeitures required, students' eligibility may be reinstated after sitting out three practices; Marquette - Self-reported a violation of By-Law 3.16.6.3, no forfeits are required, students may participate but eh coach must sit out one practice; Marquette - Self-reported a violation of By-Law 3.15.1.d, no forfeits are required, student may be reinstated after sitting out one practice and may not participate in school preseason scrimmage; Park Hill South - Self-reported violations of By-Law 3.15.1.d, no forfeits are required, students may be reinstated after sitting out the number of practices as they participated in the camp; Rolla - Self-reported a violation of By-Law 3.15.1.b, accepted school's actions, no forfeitures are required, student to have eligibility reinstated after sitting out one practice and the preseason scrimmage; Sikeston - Self-reported a violation of By-Law 3.15.1.d, no forfeits are required, student may be reinstated after sitting out one practice and may not participate in school preseason scrimmage; Sikeston - Self-reported a violation

**Continued on page 14**

**September 2015 Board of Directors Meeting Summary, con't from page 13**

of By-Law 3.15.1, accepted school's actions, no forfeits are required by school, student's eligibility may be reinstated after sitting out one practice for each day of camp attended; Twin Rivers - Self-reported a violation of By-Law 3.25.1.b.2 - accepted school's actions, school to forfeit the contest in which violation occurred, student to be reinstated after sitting out one set; Wellsville - Self-reported a violation of By-Law 6.1.2.a, accept the school's actions, no forfeitures are required by the school.

Recommend action by school be accepted and administration acknowledged for self-reporting with no further action - Blair Oaks - Self-reported a violation of By-Law 3.15.1.b, accepted school's actions, no forfeits required, student to be reinstated after sitting out one practice and the volleyball preseason scrimmage if the school has one; Fort Osage - Self-reported a violation of By-law 3.15.7 by allowing a student to attend one day of football camp before officially enrolling at the school, student decided to return to original school, student is eligible at former school, no forfeits are required by the school; Francis Howell North - Self-reported a violation of By-Law 1.7.3, accepted school's actions for violation of the heat acclimatization period; Grain Valley - Self-reported a violation of By-Laws 2.2.2 and 2.2.5, accept school actions, no forfeitures required, student is ineligible for 365 days; Jefferson (Festus) - Self-reported a violation of By-Law 3.13.2.a.4, accepted the school's actions, no forfeitures are required, student to be reinstated after sitting out one practice; Jefferson City - Self-reported a violation of By-law 3.15.7.a by allowing two girls attend a team tennis camp who were not students at the school, transfer forms must be completed and academic eligibility determined before students may gain eligibility in the 2015-16 school year, no forfeits required; McCluer North - Self-reported a violation of By-Law 1.7.3, accepted school's actions for violation of the heat acclimatization period; Paris - Self-reported a violation of By-Law 1.7.3, accepted school's actions for violation of the heat acclimatization period; Parkway West - Self-reported a violation of By-Law 3.15.1.b - accept school's actions, no forfeitures required, student's eligibility to be reinstated after sitting out one practice; Rock Bridge - Self-Reported a violation of By-Law 3.15.6.b.2 regarding residency and participation for the school, accepted schools actions, no forfeits required, reinstate students who are fully eligible at the school; Savannah - Self-reported a violation of By-Law 3.15.1.b, accepted school's actions, no forfeits required, student to be reinstated after sitting out three practices; Savannah - Self-reported a violation of By-Law 3.15.1.b, accepted school's actions, no forfeits required, student to be reinstated after sitting out the appropriate number of practices; Sherwood - Self-reported a violation of By-Laws 2.2.2 and

2.2.5, accepted schools actions, no forfeitures required, student may have eligibility reinstated after sitting out two games; St. Pius X (Kansas City) - Self-reported a violation of By-Law 3.15.1.b - accept school's actions, no forfeitures required, students' eligibility to be reinstated after sitting out three practices.

Application for approval of Senior High School Cooperative Sponsorships (By-Law 1.4.1): Rock Bridge and Columbia Independent high schools - Boys Swimming (2015-16).

Application for approval of Junior High School Cooperative Sponsorships (By-Law 1.4.2): Anderson, Noel, Pineville, Rocky Comfort, Southwest City, and White Rock junior highs - Cheerleading, Music and Speech (2015-16); Ava, Skyline (Norwood) and Mt. Zion Bible junior highs - 11-Man Football (2015-16); Clinton and Davis junior highs - 11-Man Football (2015-16); Laura Speed Elliott and Saints Peter and Paul junior highs - 11-Man Football, Boys and Girls Track, Girls Volleyball, and Wrestling (2015-16); Lebanon and Joel E. Barber junior highs - Boys and Girls Cross Country (2015-16); Marceline and McCartan Memorial junior highs - Boys and Girls Basketball, Cheerleading, 11-Man Football, Scholar Bowl, Girls Softball, Boys and Girls Track and Wrestling (2015-16); Mound City and Craig junior highs - Boys and Girls Basketball, Cheerleading, 8-Man Football, Boys and Girls Track and Girls Volleyball (2015-16); Our Lady of Lourdes Interparish and Columbia Independent junior highs - 11-Man Football (2015-16); Polo and Mirabile junior highs - Cheerleading, 11-Man Football, Girls Softball, Boys and Girls Track and Wrestling (2015-16); South Holt and Nodaway-Holt junior highs - 8-Man Football (2015-16).

Application for Assignment to Alternate MSHSAA Board District: Belton High School and Belton Middle School - Kansas City District (2016-2026); Raymore-Peculiar High School and Raymore-Peculiar East Middle School - Kansas City District (2016-2026).

Tabled action regarding lessening the penalty against the St. Louis Public School District until more information can be obtained from the school district.

Urhahn requested the Board members to submit possible names of people that can be members of the Financial Impact Advisory committee as a number of former members have changed. The committee members should be knowledgeable of budgets in order to review the effect of by-laws on local budgets. No action taken by the Board.

Garner addressed with the Board the Basketball Advisory Committee's tabled item on tie-breaking procedures.

Approved the Basketball Advisory Committee's item on clarification of tie-breaking procedures at basketball district seed meetings.

Approved the final listing of the 2014-15 5-Star Leadership Schools.

Accepted the FY2015 Audit Report as presented.

Accepted the July and August, 2015 financial reports as presented.

Approved FY2016 budget items as presented.

West presented to the Board three recommendations from the Media Advisory Committee: 1) Coaches or Athletic Directors must post schedule changes and final scores for team sports/dual events within 24 hours after the scheduled start of the contest or face a \$25 fine per offense; 2) Add appropriate language regarding allowable live streaming during MSHSAA sponsored post season events. Including halftime performances; 3) To be considered a school broadcast with the rights fee waived said broadcast must be a total student produced broadcast including on air talent.

Approved recommendations #2 and #3 of the Media Advisory Committee, and to list recommendation #1 as an Area Meeting topic.

Motion Eaton, second Hill, to enter into closed session for matters involving the eligibility status of students where personally identifiable private information from a student's educational record may be reviewed or discussed. Section 610.021(6 and/or 14) R.S.Mo.; 20 U.S.C. 1232g(b); 34 C.F.R. 99.1 et seq. Motion passed 10-0 on a roll call vote with members Schmidt, Churchwell, Kinder, Beem, Linneman, Hill, Johnson, Wilson, Eaton, and Soden voting yes.

Motion Churchwell, second Johnson, to exit out of closed session. Motion passed 10-0 on a roll call vote with members Schmidt, Churchwell, Kinder, Beem, Linneman, Hill, Johnson, Wilson, Eaton, and Soden voting yes.

The following action was reported out of closed session.

Motion Hill, second Johnson, to grant unrestricted eligibility to the student at Lutheran St. Charles due to new information provided to the Board. Motion passed 6-4 with Wilson, Johnson, Linneman, Hill, Beem, and Schmidt voting yes and Kinder, Eaton, Soden, and Churchwell voting no.

Denied reinstatement of Monte Childers as a football official. Motion passed 9-0-1 on a roll call vote with members Schmidt, Kinder, Beem, Linneman, Hill, Johnson, Wilson, Eaton, and Soden voting yes and Churchwell abstaining.

Motion by Kinder, Second by Eaton, to enter into closed session for matters involving the eligibility status of students where personally identifiable private information from a student's educational record may be reviewed or discussed. Section 610.021(6 and/or 14) R.S.Mo.; 20 U.S.C. 1232g(b); 34 C.F.R. 99.1 et seq. Motion passed 10-0 on a roll call vote with members Schmidt, Churchwell, Kinder, Beem, Linneman, Hill, Johnson, Wilson, Eaton, and Soden voting yes.

**Continued on page 15**



**September 2015 Board of Directors Meeting Summary, con't from page 14**

Motion Kinder, second Churchwell, to exit out of closed session. Motion passed 10-0 on a roll call vote with members Schmidt, Churchwell, Kinder, Beem, Linneman, Hill, Johnson, Wilson, Eaton, and Soden voting yes.

The following actions were reported out of closed session.

Motion Eaton, second Churchwell, to deny unrestricted eligibility to the student at Vianney High School based on lack of evidence of a hardship. Motion passed 8-2 on a roll-call vote. Motion passed 8-2 on a roll call vote with members Churchwell, Kinder, Beem, Linneman, Johnson, Wilson, Eaton, and Soden voting yes and Hill and Schmidt voting no.

Motion Kinder, second Soden, to deny eligibility to the student of Bishop LeBlond based on lack of evidence of a hardship. Motion passed 8-1 with all voting affirmative on a roll-call vote. Motion passed 8-1 on a roll call vote with members Churchwell, Kinder, Beem, Linneman, Johnson, Wilson, Eaton, and Soden voting yes, Schmidt voted no. (Note: Hill stepped out of the room prior to appeal.)

Recommended that Northland Christian High School proceed with gaining full membership.

Approved McAuley Catholic High School's request to participate in the 8-Man Football Playoffs.

Approved charging \$4 for district and sectional meets in cross country and \$5 for district and sectional track and field meets. Denied request from MMEA and take the item to the Music, Constitution Study, and Liaison advisory committees.

Richards and Garner discussed with the Board the process of getting information for classifying football and basketball schools and the timetable for release the information. No action was taken by the Board.

Determined to take no further action in

regard to the Francis Howell High School reported violation.

Urhahn discussed with the Board about possible changes to the format of the Music Festival. No action was taken by the Board.

Motion Kinder, second Eaton, to enter into closed session for matters involving the eligibility status of students where personally identifiable private information from a student's educational record may be reviewed or discussed. Section 610.021(6 and/or 14) R.S.Mo.; 20 U.S.C. 1232g(b); 34 C.F.R. 99.1 et seq. Motion passed 10-0 on a roll call vote with members Schmidt, Churchwell, Kinder, Beem, Linneman, Hill, Johnson, Wilson, Eaton, and Soden voting yes.

Wilson excused himself to represent the school in the appeal.

Motion Kinder, second Eaton, to exit out of closed session. Motion passed 10-0 on a roll call vote with members Schmidt, Churchwell, Kinder, Beem, Linneman, Hill, Johnson, Wilson, Eaton, and Soden voting yes.

The following action was reported out of closed session.

Motion Beem, second Hill, to grant unrestricted eligibility to the student at Kennett High School based on new evidence of a hardship. Motion passed 8-1 with Johnson, Linneman, Hill, Kinder, Beem, Soden, Churchwell, Soden, Schmidt voting yes and Eaton voting no.

Wilson rejoined the Board.

Approved the wording for the modesty rule for dance costumes as presented.

Determined to explore the possibility of requiring football for post-season in RFP.

Long discussed with the Board the RFP schedule for the championship venues in basketball beginning 2017-2018, and wrestling beginning in 2018-2019. The RFP process for both will begin October 1, 2015, with expected

Board consideration at the January 2016 meeting. No action was taken by the Board.

Motion Eaton, second Churchwell, to enter into closed session for matters involving the eligibility status of students where personally identifiable private information from a student's educational record may be reviewed or discussed. Section 610.021(6 and/or 14) R.S.Mo.; 20 U.S.C. 1232g(b); 34 C.F.R. 99.1 et seq. Motion passed 10-0 on a roll call vote with members Schmidt, Churchwell, Kinder, Beem, Linneman, Hill, Johnson, Wilson, Eaton, and Soden voting yes.

The following action was reported out of closed session.

Motion Eaton, second Beem, to approve status of the speech/debate coach for the 2015-16 school year with a reprimand for past violations. Motion passed 10-0 on a roll call vote with members Schmidt, Churchwell, Kinder, Beem, Linneman, Hill, Johnson, Wilson, Eaton, and Soden voting yes.

Motion Kinder, second Eaton, to exit out of closed session. Motion passed 10-0 on a roll call vote with members Schmidt, Churchwell, Kinder, Beem, Linneman, Hill, Johnson, Wilson, Eaton, and Soden voting yes.

Accepted the self-report and approve the proposal from the Kansas City Public School district on handling activity participation for students attending magnet school, Paseo Academy.

Urhahn discussed with the Board the current agreements involved with the production of events on television. He informed the Board that Fox Sports Midwest is no longer willing to pay a rights fee to air MSHSAA events.

Approved the streaming of MSHSAA events without television coverage.

Accepted Harvey Richards' retirement letter.

The Board reviewed several informational items with the Board. No action was taken by the Board.

The meeting was adjourned.

**Future Board of Directors & Appeals Meeting Dates**

The following dates have been set for meetings of the MSHSAA Board of Directors and Appeals Committee for the 2015-2016 school year: School administrators and coaches are reminded of how important it is to have your transfer forms and supporting documentation supplied to the MSHSAA office a minimum of two weeks before the Appeals Committee meeting.

Anyone attending a meeting in the MSHSAA office who requires auxiliary aids or services should request such services by contacting the executive director of the MSHSAA, telephone (573) 875-4880, no later than 48 hours before the

**Board of Directors**

- December 2-3, 2015 - MSHSAA office, Columbia (Wed.-Thu. of Week 22)
- January 27-28, 2016 - MSHSAA office, Columbia (Wed.-Thu. of Week 30)
- March 9-10, 2016 - MSHSAA office, Columbia (Wed.-Thu. of Week 36)
- April 8-9, 2016 - Tan-Tar-A, Osage Beach (Fri.-Sat. of Week 39 - moved due to Easter weekend)
- June 15, 2016 - MSHSAA office, Columbia (Wed. of Week 50)

Note: All meetings shall begin at 8:30 a.m. with the exception of April 4, 2014

meeting.

Hearings of student eligibility shall be closed as matters involving the eligibility status of students where personally identifiable private information from a student's educational record will be reviewed or discussed. Section 610.021(6 and/or 14) R.S.Mo.; 20 U.S.C. 1232g(b); 34 C.F.R. 99.1 et seq. All other portions of all meetings are open.

For more details on the sites and times of the meetings, contact the MSHSAA office or MSHSAA web site at [www.mshsaa.org](http://www.mshsaa.org).

meeting which shall begin at 1:00 p.m.

**Appeals Committee**

- November 17, 2015 - MSHSAA office, Columbia (Tue. of Week 20)
- March 15, 2016 - MSHSAA office, Columbia (Tue.-Wed. of Week 37)

Note: All meetings begin at 8:30 a.m.

# Weight-Control Requirements in Wrestling

If a coach enters a wrestler into competition against another school prior to that wrestler's name appearing on the school's Alpha List the coach has used an ineligible wrestler. **PENALTY:** 1) That match is forfeited; 2) The coach is ineligible to coach at the next contest at the same level – just as if he had been ejected; and 3) The wrestler is ineligible to wrestle at the next contest at the same level, after having his weight assessed, - just as if he had been ejected.

Each wrestler is required to make scratch weight, at least once, during the regular season once he/she has reached the minimum weight class they plan to wrestle in the District Tourna-

ment as determined by their weight management plan. The deadline for a wrestler to weigh-in at scratch weight is January 14, 2015.

**Exception: A wrestler who has not been medically released due to injury or an ineligible wrestler gaining eligibility must first complete the weight management assessment by a MSHSAA approved Assessor. The weight class in which the wrestler officially weighs in at for the first time, making scratch weight, on or after January 15 will be considered his/her minimum wrestling weight. All wrestlers qualifying for the exception are required to meet the first weigh-in requirement on or before the**

**Saturday of Week 31 of the Standardized Calendar (February 7, 2015).**

If using the Weight Certification Exception, the school AD and Coach are required to print off the Weight Certification Exception Document located on the Wrestling page of the MSHSAA website, The document must be completed entirely and submitted to the MSHSAA office to the attention of the Assistant Executive Director of Wrestling.

A 2lb. growth allowance will begin on January 15, 2015.

## Wrestling Tournament Reminders

Every year the MSHSAA receives numerous questions about what is permitted and what is not concerning wrestling tournaments. For example, a frequently asked question is how many matches can a wrestler participate in during a tournament? The answer is a maximum of five matches each day of the tournament, excluding forfeits. The following items should answer most questions:

- Tournament Definition: "Any event in which awards are given and /or a champion is determined by any means or any format that involves five (5) or more teams, at one site, on any given date. All other contests at one site, on any given date will count as one non-tournament event." By Law 381.1b
- Senior High School Wrestling Teams may

- compete in 15 events (no more than 6 of which may be tournaments).
- There is no limit on the number of teams participating in a tournament provided no team will compete on more than one school day.
- No wrestler shall compete in more than 50 matches, **excluding forfeits**, prior to the district tournament.

## 2016 MSHSAA Wrestling Championships

- The MSHSAA State Wrestling Championships will be held at Mizzou Arena in Columbia, February 18-20, using a double-elimination format with complete wrestlebacks to sixth place with a total of 16 qualifiers in each weight class.
- Tickets: \$8 per session (good for one entry to the facility)
- Time Schedule:

Session 1: Class 1 & 2 Thursday, 10 a.m.	1 <sup>st</sup> -round & 1 <sup>st</sup> -round wrestlebacks
Session 2: Class 3 & 4 Thursday, 5 p.m.	1 <sup>st</sup> -round & 1 <sup>st</sup> -round wrestlebacks
Session 3: All Classes Friday, 9:30 a.m.	Quarterfinals, 2 <sup>nd</sup> -rd wrestlebacks, Semifinals & 3 <sup>rd</sup> -rd wrestlebacks
Session 4: All Classes Saturday, 10 a.m.	4 <sup>th</sup> -rd wrestlebacks, 3 <sup>rd</sup> -place & 5 <sup>th</sup> -place matches
Session 5: All Classes Saturday, 4:30 p.m.	Finals

- The district tournament will be held February 12-13, 2016, and will be two-day tournaments comprised of approximately 14 schools. The top four place finishers in each weight class will advance directly to the state tournament. If at the district seeding meeting it is determined that there are no more than nine wrestlers in each weight class, the district tournament shall be held on Saturday only.

## Basketball Advisory Committee Summary

*Held April 17, 2015*

\*\*\*1. Recommend to revise the seed meeting procedure in the Basketball Manual (Section 3: District Entry Procedure, E. Seed Meeting, item 1.) as follows:

"The mandatory seeding procedure is to seed each spot individually starting with the #1 seed, followed by the #2 seed, continuing to the last seed. The district schools participating in the meeting shall take into account each team's win-loss record (varsity games only), head to head competition, caliber of competition, and common opponents they have played over the season. If a tie should occur, the district schools participating in the meeting shall look at the tied teams only and their head to head competition to break the tie. Should a tie still exist, a coin flip shall determine the seeds of the tied teams. The district schools participating in the meeting whose team is involved in the tie shall abstain. This

specific procedure shall be followed by district manager."

**Amended:** "The mandatory seeding procedure is to seed each spot individually starting with the #1 seed, followed by the #2 seed, continuing to the last seed. The district schools participating in the meeting shall take into account each team's win-loss record (varsity vs. varsity games only), head to head competition, caliber of competition, and common opponents they have played over the season. If a tie should occur, a second vote would be used to determine the seed but only the district schools who are not involved with the tie would participate in the second vote. If a tie remains, it shall be broken based on head to head competition of the tied teams. Should a tie still exist, a coin flip shall determine the seeds of the tied teams. This specific procedure shall be followed by district manager."

\*\*\* Approved as amended

## **Holiday Basketball Tournament Regulation Reminders**

All member schools should review MSHSAA By-Law 3.18 (Tournament, Meet, and Multiple-game Event Sanctioning Regulations) to insure that all provisions of the regulation are being met as they apply to all sports. Particular attention should be directed to the specific regulations regarding the conducting of a Christmas or Thanksgiving holiday tournament. It is important that all member schools are familiar with these provisions if they plan to host a holiday tournament or before they accept an invitation to participate in one. Listed below are two important specific reminders:

1. A tournament held during the Christmas or Thanksgiving holidays can include no more than 16 schools on a bracket that is scheduled so no school will compete on more than one school night preceding a school day, and that causes no loss of school time.

2. A tournament held during the Christmas holidays that begins no earlier than the day following Christmas Day and ends before any school entered resumes classes following the holidays may consist of two divisions with no more than 16 teams in each division competing for divisional honors only or three divisions with no more than 8 teams in each division competing for divisional honors only.

If you have any questions about MSHSAA By-Law 3.18, call the MSHSAA for further clarification.

## **Bands at Basketball Contests**

Part of the excitement at many of our interscholastic basketball contests involves the spirited music supplied by a pep or jazz band. The performances of the musical group are enjoyed by all attending the game. To ensure full appreciation of the group's performances certain guidelines, indicating when to play, should be followed. Band directors are reminded that as a courtesy to the teams and cheerleaders of both schools, the performances by the band should be limited to a certain schedule. The guidelines listed below indicate an appropriate playing schedule for the band.

### **Guidelines for bands performing at basketball contests:**

- The band should play before the game begins. The director should coordinate the schedule so that team members may be announced if desired by the host school.
- The band should play at halftime of the contest.
- The band should play in-between contests, again coordinating this schedule so that team members may be announced.
- The band may play at the end of the contest if desired.
- The band should not play during time-outs or the break between quarters in order to allow the sideline cheerleaders the opportunity to lead cheers. Players and coaches need to be able to communicate with each other during time-outs.
- Musical instruments may not be used as noise makers during the contests.

The band director and his/her performing group will display courtesy and respect to the players and sideline cheerleaders by playing at specific times. With good planning and cooperation the school pep band will be an integral part of the excitement and spirit of the contests.

## **Official Scorer for Basketball Apparel Requirement**

The NFHS basketball rules committee implemented Rule 2-11-2 which now requires the official scorer to wear a black-and-white vertically striped garment. This is a 9-12 rule and is not a requirement but an option at the JH level. The NFHS rules committee felt that players, coaches and officials need to be able to quickly and easily identify the official scorer. Requiring the scorer to wear a striped garment will assist in this regard. In addition, wearing a striped garment will make the scorer look more professional.

## **2015-16 Basketball Game Timing Rule**

The Basketball Game Timing Rule shall be used for all interscholastic games both boys and girls, including high school varsity, junior varsity, sophomore, freshman, and all junior high contests. A running clock shall be used when after the end of the third quarter there is a point differential of 30 points or more. The clock will be stopped only under the following conditions:

1. Charged time-out
2. Injury time-out
3. To confer with scorers or timers, if necessary
4. Because of unusual delay in getting a dead ball alive
5. To administer all technical, intentional, flagrant and disqualifying fifth personal fouls
6. For any emergency

After these clock stoppages, the clock will begin to run again with normal play resuming procedures. If during the fourth quarter the point differential drops below 30 points, normal timing will resume until the 30 point differential has been reached again or the game ends.

## **Mandatory 14-Foot Coaches Boxes on Basketball Courts**

It has come to the attention of the MSHSAA that there are numerous MSHSAA member schools that have gymnasiums with basketball courts that do not have the mandatory coaches boxes marked in paint on their court. There is a mandatory basketball game rule that involves these coaches boxes that must appear on the court.

Therefore, on all basketball courts that do not have these mandatory coaches boxes painted on the court, it is the responsibility of the host game management to place temporary strips of tape on the court before an interscholastic contest may begin. Officials are instructed not to begin any interscholastic contest until there are visible coaches boxes on the basketball court. These coaches boxes are to be located between 14 feet and 28 feet from each baseline unless an alternative location is approved in writing by the MSHSAA. Cooperation between MSHSAA member school host game management and game officials is appreciated and expected to insure the required fourteen-foot coaches boxes are present on all interscholastic basketball courts.

## Stomping on Bleachers

Large numbers of fans standing on and stomping bleachers in rhythm can create a physical hazard. Stomping adds additional physical strain which can conceivably cause the bleachers to collapse. This is particularly true of temporary bleachers erected for outdoor events and rollout bleachers used in gymnasiums. It is strongly recommended to all school administrators that steps be taken to eliminate the stomping of bleachers. Schools should be aware of the possible damage to the school property and the potential physical dangers to spectators in establishing any policies in this regard.



## Special Election -- Basketball Players Restricted to Playing in Six Quarters in One Day

Coaches are reminded that MSHSAA By-Law 3.21.1 restricts basketball players from participating in more than six quarters on one calendar date. If a participant plays in a previous game on the same day or evening (either the junior varsity preliminary or some other game that day) then the total number of quarters in both games may not be greater than six. For example, a player who was in three quarters of the junior varsity contest may participate in three quarters of the varsity game.

This is an eligibility standard. Thus, the game officials have no authority to become involved in matters relating to the six quarter rule. Coaches and bench personnel (scorers) should discuss in advance of the varsity contest the number of quarters each boy and girl may play.

The minimum penalty for using a player for more than six quarters on a calendar date is forfeiture of the game in which the violation occurs. Over the course of a season, a player may play no more quarters than five times the number of games scheduled for the highest team on which he/she plays plus the allowable tournaments. This could be 100 quarters, if the team schedules 20 games and one tournament; 90 quarters, if the team schedules 18 games and two tournaments; or 80 quarters if the team schedules 16 games and three tournaments. The total number of quarters for a season did not change with the Special Election, only the number of quarters a player can play in one day.

### 2015-16 Basketball Schedule

All high schools participating in boys and/or girls basketball please note. Listed below are the pertinent dates associated with the 2015-16 Basketball Season:

First Possible Practice All Classes	November 2
Pre-Season Scrimmages	After 9th Practice Prior to First Game
First Possible Contest All Classes	November 20
District Tournaments Class 1, 2, and 3	February 20-27
District Tournaments Class 4 and 5	February 27-March 5
Class 1 Sectional Games	March 1
Class 2 and 3 Sectional Games	March 2
Class 1, 2, and 3 Quarterfinal Games	March 5
Class 4 Sectional Games	March 8
Class 5 Sectional Games	March 9
Class 4 and 5 Quarterfinal Games	March 12
Show-Me Showdown I	March 10-12
Show-Me Showdown II	March 17-19

If there are any questions, please contact Kevin Garner at the MSHSAA Office (573) 875-4880.

### 2016 SHOW-ME SHOWDOWN I

#### Session 1A:

#### Thursday, March 10 • HEARNES CENTER

- 12 Noon – Class 2 Boys Semifinal
- 1:40 p.m. – Class 2 Boys Semifinal
- 3:20 p.m. – Class 1 Girls Semifinal
- 5:00 p.m. – Class 1 Girls Semifinal
- 6:40 p.m. – Class 1 Boys Semifinal
- 8:20 p.m. – Class 1 Boys Semifinal

#### Session 1B:

#### Thursday, March 10 • MIZZOU ARENA

- 12 Noon – Class 3 Girls Semifinal
- 1:40 p.m. – Class 3 Girls Semifinal
- 3:20 p.m. – Class 3 Boys Semifinal
- 5:00 p.m. – Class 3 Boys Semifinal
- 6:40 p.m. – Class 2 Girls Semifinal
- 8:20 p.m. – Class 2 Girls Semifinal

#### Session 2: Third-Place Games

#### Friday, March 11 • MIZZOU ARENA

- 11:00 a.m. – Class 3 Girls Third-Place
- 12:45 p.m. – Class 3 Boys Third-Place
- 2:30 p.m. – Class 2 Girls Third-Place
- 4:15 p.m. – Class 2 Boys Third-Place
- 6:00 p.m. – Class 1 Girls Third-Place
- 7:45 p.m. – Class 1 Boys Third-Place

#### Session 3: Championship Games

#### Saturday, March 12 • MIZZOU ARENA

- 11:00 a.m. – Class 3 Girls Third-Place
- 12:50 p.m. – Class 3 Boys Third-Place
- 2:40 p.m. – Class 2 Girls Third-Place
- 4:30 p.m. – Class 2 Boys Third-Place
- 6:20 p.m. – Class 1 Girls Third-Place
- 8:10 p.m. – Class 1 Boys Third-Place

### 2016 SHOW-ME SHOWDOWN II

#### Session 1:

#### Thursday, March 17 • MIZZOU ARENA

- 3:30 p.m. – Class 5 Girls Semifinal
- 5:10 p.m. – Class 5 Girls Semifinal
- 6:50 p.m. – Class 5 Boys Semifinal
- 8:30 p.m. – Class 5 Boys Semifinal

#### Session 2:

#### Friday, March 18 • MIZZOU ARENA

- 11:00 a.m. – Class 5 Girls Third-Place
- 12:45 p.m. – Class 5 Boys Third-Place
- 2:30 p.m. – Class 4 Girls Semifinal
- 4:15 p.m. – Class 4 Girls Semifinal
- 6:00 p.m. – Class 4 Boys Semifinal
- 7:45 p.m. – Class 4 Boys Semifinal

#### Session 3:

#### Saturday, March 19 • MIZZOU ARENA

- 11:00 a.m. – Class 4 Girls Third-Place
- 12:50 p.m. – Class 4 Boys Third-Place
- 2:40 p.m. – Class 5 Girls Championship
- 4:30 p.m. – Class 5 Boys Championship
- 6:20 p.m. – Class 4 Girls Championship
- 8:10 p.m. – Class 4 Boys Championship

## Track and Field Advisory Committee Summary

Held June 9, 2015

1. Recommend to approve the addition of the javelin event as an exhibition event at the 2016 State Track and Field Championships (top 16 declared throwers per class), with the event being reviewed the following year for consideration of becoming a scoring event at the 2017 State Track and Field Championships.
2. Recommend to approve the addition of para-athlete (wheelchair) events (100, 200, 400, 800, 1600, 3200, shot put, discus, javelin) as exhibition events at the 2016 State Track and Field Championships (top 16 from

performance lists; declared; big school/small school), with the event being reviewed the following year for consideration of becoming scoring events at the 2017 State Track and Field Championships. Look into school limitations on meets.

3. Recommend to approve exploring the possibility of moving the site of the State Track and Field Championships from Lincoln University to Jefferson City High School in 2016.

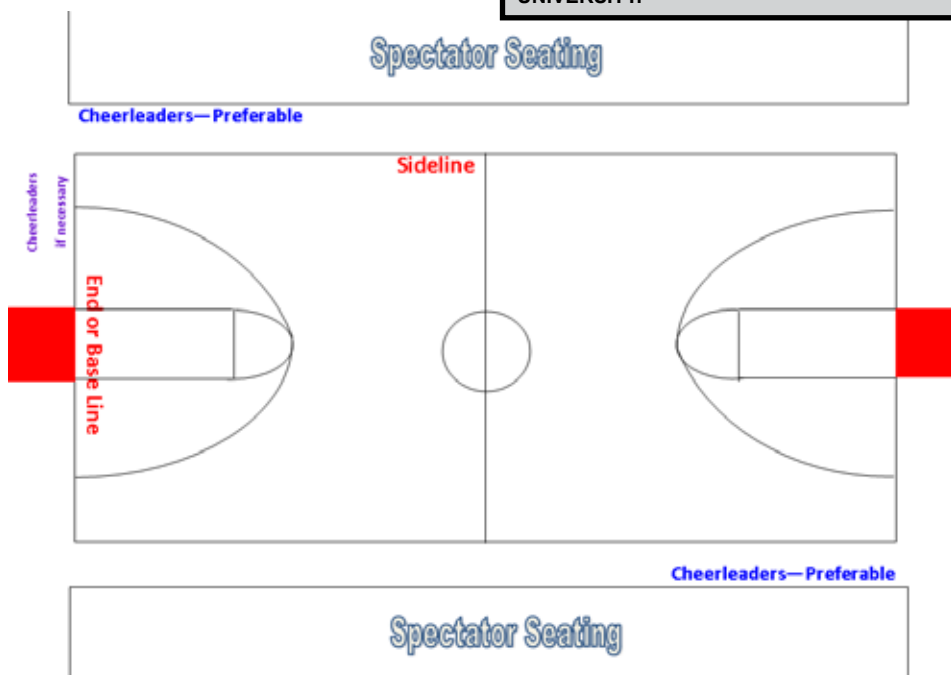
All others approved



## Placement of Sideline Cheer Squads During Basketball Contests

Sideline cheer coaches should coordinate the placement of the sideline cheer squads at basketball contests with the school athletic administrator or building principal. When possible, it is suggested that the squads should cheer along the sidelines close to the intersection of the sideline and baseline. If space does **not** permit, the squad should be located along the baseline but **not** beneath the basket or within the area of the free throw lane lines extended. In all locations the squad should be back at least three or four feet from the boundary lines.

Sideline cheerleaders should always be aware of the actions occurring in the contest and be prepared to move as play advances toward them. The squad should also be attentive to the movement of the contest officials to be certain they do not interfere with their officiating responsibilities.



### Show-Me Scholar Bowl Question Provider

The question provider for the 2015-16 MSHSAA Scholar Bowl districts and state series will be National Academic Quiz Tournaments. Should schools wish to purchase practice questions, simply contact National Academic Quiz Tournaments, LLC via their website: NAQT.com.

### 2014-15 Scholar Bowl Questions Available for Purchase

The questions which were used at the 2014-15 MSHSAA Scholar Bowl District and State tournaments, written by National Academic Quiz Tournaments, are available for purchase from the MSHSAA. The price for a set of these questions is \$50.00 plus shipping and handling for 8 games (5 District + 3 Sectional games) or \$100.00 plus shipping and handling for 18 games (5 District + 3 Sectional + 10 State Games). Schools that are interested in purchasing these questions must contact MSHSAA by phone or mail (the questions are included on the MSHSAA order form located on the website).

The question provider for the 2015-16 Scholar Bowl district and state tournament series is National Academic Quiz Tournaments, LLC, and these questions will be available for purchase following this year's State Championships.

### Debate Judges Needed for State Speech Tournament

There may be a shortage of qualified debate judges for this year's tournament. Any school able to supply an extra judge or judges should contact Don Maurer at the MSHSAA, (573) 875-4880 ext. 3006. **Please note that schools qualifying four or more students in debate (Cross-Examination, Lincoln-Douglas, and Public Forum) for the state tournament are required to provide a second debate judge.** Your assistance and cooperation will be greatly appreciated. **AS A REMINDER, THE 2016 MSHSAA STATE SPEECH/DEBATE/THEATRE CHAMPIONSHIPS WILL BE HELD AT MISSOURI STATE UNIVERSITY.**

# Avoiding Problems and Penalties in Music

Each year, there are numerous problems that develop regarding music festival entries. In order to avoid possible problems directors must be knowledgeable of MSHSAA policies, procedures, and rules. While these policies, procedures, and rules are provided to the school each year in the MSHSAA Music Manual, directors are not always as diligent as they should be to become informed. The result is often an unfortunate and unpleasant situation that could have been avoided with better preparation on the part of the directors. The following is an appropriate procedure for directors to follow which should help to prevent problems.

Early in the school year, the school administrator shall complete the required eligibility roster for all music students that will be participating in competitive/evaluation music events during the academic year. The eligibility roster must be completed online through the MSHSAA website [www.mshsaa.org](http://www.mshsaa.org). This must be done prior to the first competitive/evaluative music event of the school year. List only those students that meet the student eligibility requirements of MSHSAA as well as those of the school. Any student who does not meet the requirements is not eligible and cannot be listed. This procedure will be repeated at the beginning of second semester and any changes to the eligibility roster notated. This will address student eligibility for all

competitive/evaluative music events for the school year including the district and state music festival. This is a separate roster from the Festival Manager Program. The Festival Manager Program roster is used only for the MSHSAA District and State Music Festivals.

In August, a packet should have been received by the school athletic administrator of the MSHSAA member schools registered to participate in music activities, with instructions to forward to the music directors. This packet contained information regarding registration with the MSHSAA Festival Manager Program as well as general information about the festival manager program.

The music manual is available on the MSHSAA website under the 'Music Activities' link. This will allow each music director to print and have their own copy for review at any time. Please take the time to read it completely. New wording has been underlined, areas of emphasis



appear in bold text and all penalties appear in gray boxes. It is the director's responsibility to know, understand and follow the stated rules for the festival and to communicate this information to students and parents.

In order to avoid some of the most common problems, pay particular attention to the following areas:

- **Entry deadline dates and late entry procedures:** One problem that occurs each year is late entries. The Music Advisory Committee has spent a great amount of time discussing this procedure. The policy appears in the MSHSAA Music Manual under Section 2-1. Refer to article [Procedure for Late Submission of Music Entries](#) located elsewhere in this Journal.
- **Limitations on entries:** An individual student may enter no more than two small vocal ensembles, no more than two wind/percussion small ensembles and no more than two string small ensembles. No student shall enter two identical ensembles (i.e. ensembles with the same instrumentation or voicing). A student can also perform one vocal solo and a maximum of two wind, percussion or string solos (piano solos are not included).
- **Performance time limits:** Another area of which directors must be knowledgeable is the minimum performance time limit. Solo and small ensemble performances shall be a minimum of 3 minutes. If a performance is less than 3 minutes in length, an additional work should be chosen from the MSHSAA Prescribed Graded List to bring performance to at least 3 minutes. A penalty of "one rating lower" shall be imposed for any solo/small ensembles that perform less than 3 minutes.
- **Scores:** For small ensemble entries, the adjudicator must be supplied an original publication of the score of the work with each measure numbered. If a score is not published, contact the publisher and request permission to create one. Separate parts or an incomplete score will not be allowed and will result in the rating being lowered one rank. Exception: For string duets only, if no score of the work is available and the music publisher will not grant permission to create a score, then individual parts may be provided to the adjudicator.
- **Accompaniment:** Accompaniment is required if one is written for the work selected but cannot be used if the work is to be unaccompanied. Also, an individual serving as an accompanist may only accompany up to 20 performances per day at the festival.
- **Supervision:** As the entries at the festival are school entries, it is required that students be accompanied and supervised at the festivals by a member of the faculty or administration of the school or school district. If no faculty member is present, the school's entries will be considered disqualifications.

While these areas are not all-inclusive of possible pitfalls, they should be of help to directors to prevent many possible problems. It is imperative that directors be knowledgeable of the rules of the festival. We owe it to our students to prevent problems and teach them that rules exist for good reasons and must be followed.

## Procedure for Late Submission of Music Entries

The following procedure has been approved by the MSHSAA Board of Directors regarding late fees for the MSHSAA District and State Music Festivals. This information is also available in Section 2-I of the MSHSAA Music Manual. The music manual is available for viewing and/or printing via the MSHSAA website under the Music Activities link.

Each music district has established a Tuesday entry deadline date. Deadline information is available through the MSHSAA Festival Manager Program and the MSHSAA website. Any director that fails to submit entry(s) or has left off entry(s) after the established Tuesday deadline may submit these entry(s) by 4:00 p.m. on the Thursday immediately following the Tuesday district deadline. Any school submitting entry(s) after the Tuesday deadline shall be assessed a late fee of \$100 plus a doubling of the entry fee(s). The MSHSAA Office shall be notified before any late entry(s) are accepted. (Section 2-I-1)

Once the **second penalty deadline** has passed and the school music director has failed to enter one or more events for the district or state solo/small ensemble and/or large group festival the director may enter the event(s) under the following conditions. (Section 2-I-2)

1. Only entries that were omitted after the penalty deadline are eligible to enter. No scratches and/or cancellations will be allowed to enter. Only events that did not appear on any previously submitted entry form are eligible. The school music director must phone the MSHSAA office for approval prior to submitting a late entry form.
2. A late entry fee of \$300 PER EVENT will be assessed to the

school.

3. The festival manager will be notified by the MSHSAA office advising them of the late entry or entries. This will allow the festival manager to schedule the event(s) to the festival schedule and print the necessary evaluation form(s).
4. Each late entry will be scheduled at the end of the day. It is at the discretion of the festival manager to place the late entry in an earlier time slot IF one is available. If there are no cancellations the event shall be scheduled at the end of the day.
5. Schools will only be allowed to submit late entries to the district in which their school has been assigned. No school will be allowed to participate in a different district festival or state festival day.

**School directors and administrators should note that changes in entries submitted are only possible as specified below.**

**Entry changes and additions to previously submitted entries:** Entry changes and additions to previously submitted entries can be made prior to the stated district entry deadline. Once the district entry deadline has passed, entries will only be accepted as outlined above.

After the district entry deadline date has passed, changes to previously submitted entries shall be permitted as follows:

- Selection changes for entries: Manager must be notified in writing by mail, e-mail, or fax.
- Cancellations: Manager must be notified in writing by mail, e-mail, or fax.
- Substitution of participants in small ensembles. Manager must be notified

in writing by mail, e-mail, or fax.

After the district entry deadline date has passed, changes to previously submitted entries shall NOT be permitted as follows:

- Adding entries: Entries not listed on the previously submitted computer entries cannot be accepted after the district festival has concluded. Refer to Section 2-I (Late Submission of Music Entries)
- Substituting an entry for a cancelled entry
- Verbal notification of substitution in a small ensemble
- Verbal notification of selection changes
- Verbal notification of cancelled entries

A substitution may be made in an ensemble at the district festival for participants who are ill or are unable to perform on the date of the festival provided a written statement of verification is signed by the school director and is provided to the festival manager **prior** to the performance. Confirmation of eligibility of the substitution must be submitted following the festival signed by the school principal. The substitute must adhere to the limitations on entries as listed in the MSHSAA Music Manual. If a substitution is made at the district level and the entry qualifies for the state festival, the entry would be required to perform at the state festival with the students that performed at district unless a substitution is necessary at state.

**District or state schedules shall not be altered without consent of the festival manager.** Penalty for the violation shall be disqualification of the entry/entries involved. Changes in the state schedule shall **not** be made unless a direct schedule conflict exists.

## MSHSAA Music Adjudicator Training Session

The MSHSAA will sponsor one music adjudicator training session this school year. It will be held at the MMEA Conference on **Wednesday, January 27, 2016**. If you would like to register for this session, simply complete the registration form located on the MSHSAA website under the 'Music Activities' link and return it to MSHSAA. This program was developed by the MSHSAA Adjudicator Training Committee. The committee, which included music educators and experienced music adjudicators, was appointed by the MSHSAA Board of Directors as a result of a recommendation by the MSHSAA Music Advisory Committee. The main reason for embarking on the program was to bring about improved consistency among adjudicators statewide.

The specific objectives of the program as identified by the committee are:

- To make the adjudication process a constructive and educational experience for all participants in the MSHSAA Evaluative Music Festivals.
- To establish a consistent evaluation process by adjudicators at all MSHSAA Music Festivals.
- To establish an ongoing system of certification for music adjudicators.
- To establish an ongoing system of evaluation for music adjudicator.

This session is open to any music educator at no charge. In order to be certified to judge at the MSHSAA festivals, it is a requirement that the attendees have 7 years of teaching experience. Music educators with less than 7 years teaching experience are welcome to attend and would likely find the session beneficial. Again, to register, simply complete and return the registration form available on the MSHSAA website under the link 'music activities'. **Registration deadline is January 8, 2016.**

**MSHSAA**  
**1 North Keene St.**  
**PO Box 1328**  
**Columbia, MO 65205-1328**

**Nonprofit Org.**  
**U.S. POSTAGE**  
**PAID**  
**COLUMBIA, MO**  
**Permit 5**

---

---

### **Routing Report**

This routing report is provided to assist principals and athletic directors in ensuring that the *MSHSAA Journal* is seen by all necessary school personnel. Each individual should check the appropriate box after having read the *Journal* and pass it on to the next individual on the list or return it to the athletic administrator.

- |  |   |
|--|---|
| <input type="checkbox"/> Athletic Director         | <input type="checkbox"/> Girls Tennis Coach           |
| <input type="checkbox"/> Baseball Coach            | <input type="checkbox"/> Boys Tennis Coach            |
| <input type="checkbox"/> Girls Basketball Coach    | <input type="checkbox"/> Girls Track & Field Coach    |
| <input type="checkbox"/> Boys Basketball Coach     | <input type="checkbox"/> Boys Track & Field Coach     |
| <input type="checkbox"/> Girls Cross Country Coach | <input type="checkbox"/> Girls Volleyball Coach       |
| <input type="checkbox"/> Boys Cross Country Coach  | <input type="checkbox"/> Boys Volleyball Coach        |
| <input type="checkbox"/> Football Coach            | <input type="checkbox"/> Wrestling Coach              |
| <input type="checkbox"/> Boys Golf Coach           | <input type="checkbox"/> Cheerleading Sponsor         |
| <input type="checkbox"/> Girls Golf Coach          | <input type="checkbox"/> Band/Music Director          |
| <input type="checkbox"/> Girls Soccer Coach        | <input type="checkbox"/> Speech and Debate Sponsor    |
| <input type="checkbox"/> Boys Soccer Coach         | <input type="checkbox"/> Academic Competition Sponsor |
| <input type="checkbox"/> Softball Coach            | <input type="checkbox"/> Other: _____                 |
| <input type="checkbox"/> Girls Swimming Coach      | <input type="checkbox"/> Other: _____                 |
| <input type="checkbox"/> Boys Swimming Coach       | <input type="checkbox"/> Other: _____                 |