

Missouri State High School  
Activities Association

# Journal



**Official Publication of the MSHSAA Vol. 73. No. 2 Dec., 2008**

# What's the reason for high school sports?

by Dr. Kerwin Urhahn,  
MSHSAA Executive Director

As the fall championships are wrapping up, with the new format for the football championships, and sports advisory committees are meeting, I have to ask the question: Have we lost the understanding of what high school sports are for? I understand the desire to have championships and it is one of the reasons for the Missouri State High School Activities Association to exist, but I believe society has lost sight of why schools have sports and activities.

The new football format has allowed more students to participate in the football bracket of the championships; we increased from having 77 games on the opening round of the playoffs to 167 games in the first round. However, it did create travel for one school of more than five hours one way to play on a school night. Also, the format has witnessed some teams that placed second in districts that came back during the bracket and beat the first place team.

The question that has been posed to me is, "we already beat that team once, now they win and we are done." Many would say that is fair because it is either win or go home, but the new format does create some questions. That being said, the format proposal came from the football advisory committee because they wanted a change. This is the first year for this format and it will be reevaluated during its fourth year in existence.

The other sports see the additional teams in the championship bracket for football and they want that for their sports. I understand the coaches perspective because of the amount of pressure placed upon programs to make it to the championships. Therefore, we have baseball that wants a new format, two out of three games throughout the bracket until the final site. Next volleyball would like to have two teams come out of every district to sectionals and then bring either four or eight teams to the final site. Basketball has discussed bringing eight schools to the final site as well. There are additional suggestions from other sports advisory committees to expand the brackets. Making many of these changes makes it more difficult to conduct the championships without moving more into the school week.



I wrote in the last journal about the need for administrators to communicate with their coaches and vice versa. So, I would like all stakeholders involved in high school sports and activities to discuss some of the following topics. Society and parents place great pressure on coaches and schools to get scholarship dollars for their children. The problem with that includes the misconception that a scholarship is a cure all, and the majority of students that participate in high school sports will never play in college. Next, coaches and directors put tremendous pressure on themselves and

their students to win a championship, tournament, or the highest rating at a festival. Lastly, administrators know that a run to the championships brings an excitement to the high school unlike any other situation in education. These are only a few of the issues schools, administrators, coaches, and directors face when competing in sports and activities.

With all that for a backdrop, I would not give up the great experiences I had while competing, coaching, or administering high school sports and activities. We hear many times that the difference between high school sports and non-school competition is representing your school and community. The one point that I can not stress enough is that sports and activities supplement the educational program, and do not supersede the instructional process. Many times educators will use the phrase "the tail wagging the dog." It is my fear that we are moving more and more in that direction due to pressure from society to win and nothing less is acceptable. There are many life lessons taught in sports and activities from working together and learning how to overcome defeat. If not winning a championship is failing, then I know of no successful programs. There is not one program from a school that has won the championship every year. So please discuss with all stakeholders in your school to determine what is best for the educational process and being able to enhance your school day and year.

## Departments

Executive Director's Message .....	IFC
Questions & Answers .....	1
News .....	2-3
Administrative Information .....	4-8
Board of Directors .....	8-12
Winter Athletics .....	13-17
Spring Athletics .....	19
Activities .....	20-24
Officials .....	25-28

## Executive Staff

### **DR. KERWIN URHAHN, Executive Director**

Eligibility rulings, transfers, interpretation of Constitution and By-Laws, budget and finance, insurance, litigation, legislative liaison.

### **GEORGE BLASE, Asst. Executive Director**

Football, baseball, softball, camps and clinics, all-star events, team hosts.

### **STACY SCHROEDER, Asst. Executive Director**

Swimming and diving, academic competition, water polo, hardships, waivers, personnel, MSHSAA Leadership School program.

### **FRED BINGGELI, Asst. Executive Director**

Track and field, cross country, speech and debate, nonfaculty coaches, coaches education, sports medicine, school classification, enrollments.

### **TIM THOMPSON, Asst. Executive Director**

Wrestling, golf, officials.

### **DAVINE DAVIS, Asst. Executive Director**

Music, volleyball, cheerleading, dance, performing groups, gymnastics, foreign exchange, sanctions.

### **KEVIN GARNER, Asst. Executive Director**

Basketball, soccer, tennis, athletic directors liaison, waivers.

### **CRAIG LONG, Chief Financial Officer**

Budget and finance, vendor contracts and bids, advertising, corporate partners, awards, orders, buildings and grounds, technology.

### **JASON WEST, Communications Director**

Publications, media relations, public relations, television and radio rights, web site maintenance, records, statistics, sportsmanship programs & Summit, Distinguished Service Awards, Scholastic Achievement Awards, Traditions, student services, video rentals.

## December 2008 (vol. 73, no. 2)

The MSHSAA Journal is published four times per year by the Missouri State High School Activities Association.

1 N. Keene St., PO Box 1328  
Columbia, MO 65205-1328  
(573) 875-4880, Fax (573) 875-1450  
email@mshsaa.org

All photos by PhotoGliff, unless noted.  
Printing by Kelly Press, Inc., 4430 Interstate Dr., Columbia, Mo. © 2008 MSHSAA, all rights reserved.

The Journal is available free to all dues-paying senior highs, junior highs, officials and to all registered media. It is also available via subscription for \$8 per school year by calling the MSHSAA office.

# Winter Questions & Answers

The following are questions and answers pertaining to the MSHSAA Constitution and By-Laws and/or MSHSAA Board of Directors policy. These are provided as an aid in interpreting the rules and regulations which MSHSAA member schools have adopted. If you have a specific area and/or question which you would like explained, contact Dr. Kerwin Urhahn, MSHSAA executive director.

Your attention is also called to the fact questions and answers regarding interpretations of the MSHSAA Constitution and By-Laws, which appear following the Constitution Article or By-Law they relate to in the MSHSAA Official Handbook.

**Question 1:** May our high school basketball team scrimmage against an area junior college team or against a local city league team comprised of high school age players?

**Answer:** No in both cases. A school team may compete only against teams representing an MSHSAA member high school or teams from schools that are members of a like state association. The only exception to this would be an alumni game when conducted in accord with provisions of By-Law 302. This restriction applies to so-called scrimmages as well as to games. (By-Law 101)

**Question 2:** We have a person who lives in our community who has been involved in cheerleading for many years but has never attended a college/university. Can this person serve as our head cheerleading coach?

**Answer:** Yes. The standards for athletic coaches do not apply to cheerleading and dance team coaches. Any individual, however, hired to be a school cheerleading coach who does not possess a valid professional teaching certificate must satisfactorily complete an MSHSAA approved coaches education program and sports first aid. This is a prerequisite for approval to serve as a school cheerleading coach at any level at any MSHSAA member school in a subsequent school year. (By-Law 120)

**Question 3:** Do students participating in interscholastic competitive/evaluative music and speech activities have to meet the MSHSAA minimum essential student eligibility requirements?

**Answer:** Yes. Some have assumed that since these activities are generally a direct outgrowth of curricular programs the academic eligibility standards would not apply. As long as a student is limited to participating in a class setting during the regularly scheduled school day, that assumption is correct. However, music and speech activities that are conducted outside the regularly scheduled school day are considered to be extra-curricular in nature. Any extra-curricular competitive/evaluative music or speech event that involves students from two or more schools is considered to be an interscholastic event. Students participating in competitive/evaluative music or speech events must meet the MSHSAA minimum essential student eligibility requirements. This would not apply to events that are not competitive or evaluative, such as a parade that is not judged. (By-Laws 210-219)



*Question 6 details the position of the Association under the Amateur and Awards Standard regarding commemorative championship jewelry, such as in the sport of softball.*

**Question 4:** Our school uses NovaNET for credit recovery, remedial and enhancement. Credit earned will be placed on the student's transcript and count toward graduation. I would like to know if courses through NovaNET could also count toward a student's eligibility?

**Answer:** A course through NovaNET could count toward a student's academic eligibility under these conditions:

1. The student is doing the work through the school.
2. The work is all being done at a designated school site.
3. Credit must be placed on the student's transcript no later than the close of the semester in which the work was started. (By-Law 213)

**Question 5:** We have a student who is academically ineligible the first semester. Our first semester ends on January 19 and the second semester begins on January 22. We have a basketball game scheduled for Saturday, January 20. When may she begin competing in interscholastic basketball contests?

**Answer:** In accord with MSHSAA By-Law 213-e, if this student meets the academic requirement at the close of the first semester, she becomes eligible the fifth day classes are attended the second semester. In this specific case, she would become eligible to participate in interscholastic contests as of Friday, January 26.

Conversely, a student who is eligible the first semester but who fails to pass courses offering 2.50 units of credit or 70% of the maximum allowable credit whichever is greater that semester may compete until the fifth day of classes of the second semester. Using the semester dates above, a student in this situation would become ineligible as of Friday, January 26. (Grades posted later would not mitigate the use of an ineligible player after Jan. 26.)

**Exception:** If an interscholastic contest is played before the formal opening of school and a student has become academically eligible for the fall semester and is eligible in all other respects he/she may be eligible to participate under this provision provided the student is properly enrolled in the member school. (By-Law 213-e & f)

**Question 6:** Our school just won the Class 2 State Softball Championship. Our Booster Club would like to donate money to our school to enable the school to purchase a state championship commemorative ring. Is this permissible under the Amateur and Awards Requirement?

**Answer:** Yes. The Amateur and Awards Requirement does permit the school to purchase an item of commemorative jewelry for each team member to recognize a specific team accomplishment. It should be noted that only the school may purchase the item. Therefore, the Booster Club must donate the funds directly to the school for appropriate use as determined by the principal. (By-Law 231)

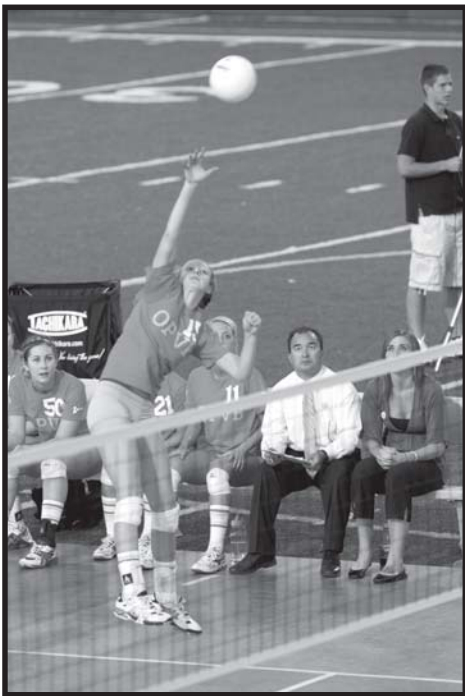
**Question 7:** May a student participate in a non-school sponsored free throw contest during a season he or she is representing his or her school in the sport of basketball or in pass, punt and kick contests during a season he is representing his school in the sport of football?

**Answer:** Yes. The MSHSAA Board of Directors interprets By-Law 235 as not restricting participation in non-school sponsored contests involving individual skills of a team sport such as free throw contests or pass, punt, and kick contests. This interpretation is based on the fact these activities involve only individual skills of a team sport and, as such, would not in themselves constitute a sport per se by normal definition. (By-Law 235)

## Schools and Communities Team Up for a Cause

October is designated as Breast Cancer Awareness Month. Several MSHSAA schools as well as their communities did their part in bringing this issue to the forefront.

In what is believed to be a first on many levels, four Kansas City area high



school girls' volleyball teams found a very unique way to raise money to help fight breast cancer.

The North Kansas City District Football Stadium at North Kansas City High School played host to two outdoor high school varsity volleyball matches. A portable court was laid on the football field so that North Kansas City could play defending Class 4 state champion Lee's Summit West. Oak Park played Winnetonka to cap the evening's festivities.

"I thought it would be a good turnout, but I didn't think it would be anything like it was," event organizer and Oak Park coach Ken Corum said. "The administration estimated the attendance at about 2,000. So it was obviously the biggest crowd these kids have played in front of, and it was one of the largest crowds for a volleyball match in the city in recent memory."

The matches raised over \$3,000 for the Greater Kansas City Affiliate of Susan G. Komen for the Cure for breast cancer awareness and research and both were televised on MetroSports in the Kansas City area.

On the court, Lee's Summit West defeated North Kansas City (25-20, 25-8) and Winnetonka defeated Oak Park (25-

23, 29-27).

No regulation high school volleyball match has ever been played outdoors in Missouri history and there is no evidence suggesting that anything similar has ever occurred in the Midwest, if not nationwide.

Marshall Public Schools used an entire week of events to help raise money for Fitzgibbon Hospital's cancer program.

"All of our fall athletic teams that played that week participated in some form," said Marshall Activities Director Scott Latham. "In addition to what we did at school, the community got behind the week as well."

The football team donned white jerseys with pink numbers in an upset victory over Moberly. The softball team won its first ever district tournament game while dressed in pink. The girls golf team wore pink hats and shirts while finishing second at the district tournament. The girls tennis, volleyball and boys soccer teams also participated in the week's events.

When the dust had settled from the week, the Owls had raised approximately \$10,000. The schools in Marshall used a "Pennies from Heaven" campaign. In addition to poster sales, bumper stickers and t-shirts, replica jerseys for the event were also sold.

"We would like to make this an annual event," said Latham. "I have already had several schools contact me about what we had going, they want to start some of these things too. Our jersey manufacturer tells me that if we can get at least 1,000 jerseys in our order, they will make us a pink jersey to where. So I am hoping to get quite a few more schools involved to be able to place that order."

A pair of football teams also started what is hoped to become an annual event. Andy McNeely, head football coach at Plattsburg High School just "wanted to do our part." A graduate of Lawson High School, McNeely's stepmother was diagnosed with brain cancer. She also taught in Lawson for over 20 years.

"We play Lawson every year," said McNeely. "You see the Coaches vs. Cancer during basketball season each year, we wanted to our part as well."

The event raised approximately \$2,400 for the Clinton County American Cancer Society. In addition to an exciting game, Lawson defeated Plattsburg 35-34 in three overtimes for the district title, cancer survivors from both communities were honored at halftime.

Special Message from Dr. Urhahn

This year has been one unlike my previous two years here at the MSHSAA office when looking at the high schools giving back to their communities through fundraisers for cancer research.

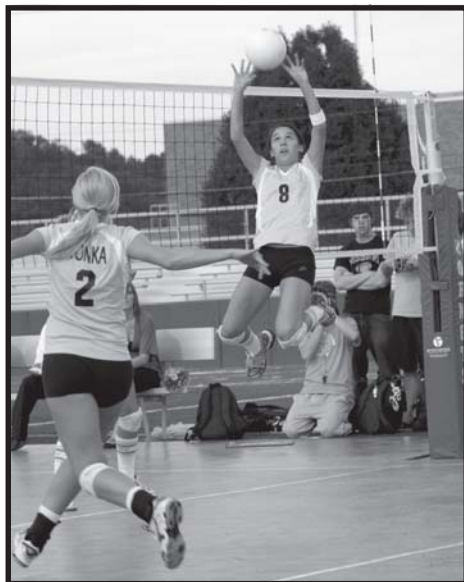
I am sure there are many schools that have community service projects throughout the state. However, this year I have been witness to two events personally and have heard of many others where high school teams have put together a community service project to raise funds and awareness of the effects of cancer has on students and community.

I would like to encourage schools that are doing these events to let our office know.

I commend the young people throughout the state that are learning to give back to their community as well as the coaches and administrators that are affording them the opportunity.

Sincerely,  
Dr. Urhahn

"We got a late start in putting things together and only had about 10 days to get this off the ground," said McNeely. "For the amount of time we had for this event, I am excited about what we can do in the future. The generosity of people in both our communities is amazing and only means this event will be bigger and better next year."



# Catastrophic Medical & Disability Insurance Plan

The MSHSAA Board of Directors resolved to purchase the Lifetime Catastrophic Medical and Disability Insurance Plan for the 2008-09 school year. This catastrophic insurance plan underwritten by Mutual of Omaha, Omaha, Nebraska will cover all students while practicing for and/or participating in activities under the jurisdiction of the MSHSAA (e.g., athletics, music, speech, sideline cheerleading, dance teams, academic competition, etc.)

This will be the 19th year for this particular program in our state. Attention is called to the fact the plan does not include liability insurance for member schools nor does it include a waiver of lawsuit provision. Therefore, school administrators are urged to check your present school district liability insurance policy to make sure participant liability is not excluded in that policy.

The plan includes a deductible of \$50,000. It will provide excess medical benefits for a student who suffers an accidental injury while practicing for or participating in an interscholastic activity conducted under MSHSAA jurisdiction which results in medical costs exceeding \$50,000 within two years from the date of injury. The premium for this coverage is paid by the member school supplementary service fees. The premium rate for 2008-2009 is \$4.72 per student athlete whose name appeared on the school's master eligibility rosters for all sports during the 2007-2008 school year.

This is an unduplicated count in that a student who participated in two or more sports is counted only once. This fee is the same for junior and senior high schools.

## Catastrophic Insurance & Successful Prevention

School administrators are reminded to be certain to file appropriate claims for potential catastrophic injuries. The current policy is presented by Mutual of Omaha. Coverage is an excess medical plan. For a more detailed description of the benefits of this policy, please refer to the summary sheet highlighting the benefits provided to all MSHSAA member schools in the August packet mailing. It should be noted that this plan does not include any liability coverage as it serves as medical only.

Along with securing the catastrophic medical coverage for their students, it is imperative that school staffs have in place a solid risk management program. Facilities and equipment should be kept in good condition. Annual review of good risk management, standard operating procedures for injuries and first aid should occur with all staff. A continuing review of school policy for security, conduct of players, coaches and fans should occur.

Insurance will address the results of a situation. However, good planning and proper risk management are the only successful prevention techniques.

## DESCRIPTION OF COVERAGE

The Lifetime Catastrophic Injury Insurance Program will pay benefits, after the \$50,000 deductible, for covered losses due to a catastrophic injury in excess of other valid and collectible insurance. Benefit highlights for covered losses are as follows:

Benefit Highlights for Covered Losses are as follows:

- 1) Lifetime Medical, Dental and Rehabilitation Expense Benefit: 100% of reasonable, customary, and necessary covered expenses, with an overall \$5,000,000 lifetime limit.
- 2) \$100,000 Lifetime Special Expense Benefit First 10 Years: Home remodeling or adaptation and special vehicle purchase or adaptation; then \$50,000 each decade thereafter.
- 3) \$50,000 Lifetime Adjustment Expense Benefit: Family counseling, training and travel in connection with care and rehabilitation of catastrophically injured student; loss of earnings of parents due to catastrophically injured student.
- 4) Total Disability/Loss of Earnings Benefit: A catastrophically injured student who is totally disabled at age 18 may receive \$2,000 per month for Life.
- 5) Partial Disability Benefit: A partially disabled student may receive \$750 per month for Life.
- 6) \$100,000 Lifetime Benefit for unrelated subsequent accidents and/or illnesses.
- 7) \$20,000 Accidental Death and Dismemberment/ Cash Benefit.
- 8) \$365,000 Extended Care Facility Benefit per calendar year.
- 9) Education expense of \$50,000 Lifetime for tuition, room/board, and other related education expenses.
- 10) Benefits are paid to a catastrophically injured student regardless of liability. No waiver/release is required to receive benefits.

Editor's Note: Please note that in the September Journal article there was an 11th benefit listed for "Presumptive Disability". This no longer applies to this policy.

## TOURNAMENT COVERAGE

A feature of the 2008-2009 statewide insurance plan provided through the MSHSAA is Tournament Play Coverage.

This coverage provides benefits on an excess basis for the first \$50,000 of medical and rehabilitation expenses incurred as a result of an injury that is sustained while a student-athlete is participating in an MSHSAA sponsored district and/or state tournament contest.

## REPORTING POTENTIAL CLAIM OCCURRENCES DURING POLICY EFFECTIVE PERIOD

If a student suffers an accidental injury under the above described circumstances and might incur \$50,000 or more in medical expenses within two years from the date of the injury or if the student is injured while participating in an MSHSAA sponsored district and/or state tournament game, contact the claim Administrator at the address listed below and instructions for filing the school's claim will be forwarded to the school district:

Dissinger Insurance Services, LLC  
10740 Nall Ave., Suite 330  
Overland Park, KS 66211  
800-386-9183 or 913-491-6385

## OPTIONAL COVERAGE AVAILABLE

An individual school or district may, by application and payment of additional premium, purchase optional coverage for school sponsored student activities not under the jurisdiction of the Missouri State High School Activities Association. Each member school may go to the web site at [www.dissingerinsurance.com](http://www.dissingerinsurance.com) for information on the optional

extended coverage directly from the MSHSAA's plan administrator, Dissinger Insurance Services.



## School Administration Responsible for Fans at Home and Away Contests

By-Law 810 makes no distinction of whether a school is the visiting or home school as far as unsportsmanlike conduct is concerned. The school's administration is responsible for the conduct of its team, coaches, students and fans at any interscholastic event in which the school is participating.

The failure to uphold proper standards of conduct causes much of the criticism and adverse publicity of interscholastic athletic events. Furthermore, improper conduct hinders the achievement of the educational values derived from athletics. Only with the conscientious effort of all administrators, coaches, fans, and players can we achieve the most worthwhile objectives of interscholastic athletics.

# Schools Reminded of Infectious Disease Policy

The MSHSAA Board of Directors has adopted the following policy in an effort to minimize the possibility of any transmission of any blood borne pathogen diseases (i.e. Hepatitis B, HIV virus and the resulting Acquired Immune Deficiency Syndrome). Although the policy was originally written with the sport of wrestling in mind, it is applicable to all sports. The MSHSAA Board of Directors strongly recommends that each school adopt a similar policy to apply to any situation where an injury which results in bleeding might occur. Such injuries are most likely to occur in physical education classes, athletic practice sessions, and contests. Therefore, it is extremely important that teachers, coaches, and referees follow the procedures outlined in this policy and be prepared any time there is blood present to treat it in a manner that respects its ability to transmit infectious diseases.

Health-care workers, including doctors and athletics trainers, who care for student-athletes should employ the universal precautions currently recommended by Centers for Disease Control in the care of all athletes, since medical history and examination cannot reliably identify patients infected with HIV. The universal precautions include:

" Routine use of barrier precautions to prevent skin and mucous-membrane exposure when contact with blood or other body fluids is anticipated. Gloves should be worn for touching blood, body fluids, mucous membranes or non-intact skin (e.g., abrasions, dermatitis) of all athletes and for handling items or surfaces soiled with blood or body fluids, and for performing venipuncture. Gloves should be changed after contact with each student-athlete. Masks and protective eye wear or face shields should be worn during procedures that are likely to generate droplets of blood or other body fluids, to prevent exposure of mucous membranes of the mouth, nose, and eyes.

- Hands and other skin surfaces should be washed immediately and thoroughly if contaminated with blood or other body fluids. Hands should be washed immediately after gloves are removed.

- Surfaces contaminated with blood should be cleaned with a solution made from a one-to-one hundred (1:100) dilution of household bleach.

- Precautions should be taken to prevent injuries caused by needles, scalpels and other sharp instruments or devices. To prevent needle stick injuries, needles should not be recapped, purposely bent or broken by hand, removed from disposable syringes, or otherwise manipulated by hand.

- Although saliva has not been implicated in HIV transmission, to minimize the need for emergency mouth-to-mouth resuscitation,

mouthpieces, resuscitation bags or other ventilation devices should be available for use.

- Health-care workers who have bleeding or oozing skin should refrain from all direct patient care until the condition resolves.

- Soiled linens should be bagged and washed in hot water with detergent.

- In the athletics environment, universal guidelines should be considered for the immediate control of bleeding and for handling bloody dressings, mouth guards and other articles containing bodily fluids.

Member institutions should ensure that policies exist for the orientation and education of all health-care workers on the prevention of transmission of blood borne pathogen diseases and the need for routine use of the above universal precautions. Additionally, provision of equipment and supplies necessary to minimize the risk of infection, as well as the monitoring of adherence to recommended protective measures, needs to be guaranteed.

In the area of interscholastic activities, some alarm has been expressed regarding the presence of the HIV virus in sweat, saliva and blood from minor injuries. Some important things to remember are:

- At this time, it is uncertain that the HIV virus is transmitted by either saliva or sweat. Therefore, efforts need to be concentrated in the area of the minor injuries that result in bleeding.

- Proper handling of these situations by coaches, officials and competitors will greatly reduce the possibility of any transmission of HIV, if indeed the athlete who is bleeding is infected by the disease.

- The possibility of transmitting HIV in this manner is much less than the possibility of transmitting other very dangerous blood-borne viral infections such as Hepatitis B.

- However, the chance of transmitting the HIV virus is not zero. Therefore, precautions should be taken to insure that no transmission could occur.

- If an athlete sustains a minor bleeding problem - and most bleeding problems in sports result from minor injuries in the nose area - the contest should be stopped, the bleeding stemmed, and any blood on the playing surface should be wiped off using a disinfectant such as Clorox, in a 100 to 1 solution (100 parts water and one part disinfectant). This same solution should be used to wipe any blood off the opponent's skin. However, the area should then be rinsed with water to avoid either participant getting the disinfectant in his eyes. It should be noted that there are also many other disinfectants that are very successful in combating the HIV virus such as isopropyl alcohol.

If any of the blood has gotten on the opponent's uniform, unless the opponent has an open cut or un-skinned area on his body, it is not necessary to clean the uniform at this point. If there is an open cut or un-skinned areas then the uniform should be wiped with the disinfectant solution and then thoroughly rinsed with water to avoid either participant getting the disinfectant in his/her eyes.

If an official should get blood on himself/herself, he or she should do the same as the competitors - use the disinfectant solution to wipe the bloodied area.

NOTE: Disposable towels should be used in all clean up and then placed in a sealed container and disposed of properly. Also, extreme care should be used in disposing of cotton used to stem bleeding.

The Communicable Disease Precaution Policy is listed in the front of each National Federation Rule Book. Please refer to that policy for further information.



# Length of Middle-Level/Junior High Seasons

MSHSAA By-Law 331 permits flexible scheduling of middle level/junior high school sports seasons at any time during the school year to enable member schools to best utilize school facilities and coaching staffs.

The By-Law specifies that the sports seasons shall be 12 consecutive calendar weeks in length, beginning with the first organized practice with any part of a sports squad and ending with the last interscholastic contest in the sport concerned. It further provides that the sports season may be extended to a maximum of 14 consecutive calendar weeks in length whenever the Christmas/winter holiday period falls within the sports season. The sports season for 7th and 8th grade teams may be scheduled at any time during the period beginning with the first day of classes or the second Monday preceding Labor Day, whichever is earlier, and ending with the last day of school in the spring.

The sports season for ninth grade teams may be scheduled at any time during the period beginning with the first possible practice date for the senior high school fall season and ending with the last day of school. A ninth grade team has a more limited schedule than a high school team. School staff should be certain to be aware of the length and number of contests for freshmen teams.

Schools are reminded that a calendar week is interpreted as beginning with a Monday and ending with the following Sunday. Any part of a calendar week shall count as a full week. For example, if the junior high school basketball season culminates with a tournament which ends on a Tuesday, this entire calendar week would count as one of the 12-14 allowable weeks. In other words, a school could not have 12-14 weeks in addition to the tournament just because a season ended in the middle of a calendar week, in this case on Tuesday.

This provision for the scheduling of middle level/junior high school sports seasons has generally worked very well for member schools. However, from time to time, there has been some confusion in the application of this By-Law to the sport of basketball, particularly where a ninth grade student begins the season playing on a junior high school team and, at the end of the junior high season, moves up and plays as a member of a senior high school junior varsity or varsity team.

If a 9th grade basketball sports season is scheduled either concurrently with the senior high school season or so that it overlaps the beginning of the senior high school basketball season, individual ninth grade students may move up at the end of the junior high school season to play as a member of the senior high school junior varsity or varsity team. In such situations, the individual student may not participate in more than the total number of games (quarters) and tournaments equal



Regardless of when junior high seasons begin, schools are limited to 12 consecutive weeks of competition, except when the season includes the Christmas or winter holiday period.

to that played by the high school team on which the student plays and may not participate in a total number of weeks that exceeds that of the senior high school season. A ninth grade student in the situation described above could participate in a maximum of 20 or 19 consecutive calendar weeks, based upon the classification of the high school, from the first practice date of the first team on which the ninth grade student plays to last contest (or practice) for the last team on which the ninth grade student plays. In either case (quarters and tournaments or length of season), once the maximum is reached, the student must discontinue participation in both practices and game competition.

Any ninth grade student that plays with seventh and eighth grade students on a junior high/middle school basketball team must begin his/her 20 or 19 consecutive calendar weeks length of season as of the first practice date of the seventh and eighth graders whether these ninth graders are competing in another sport at that time or decide for whatever reason to come out late for the junior high/middle school team. The ninth grade

students may move up and play with the senior high team when the junior high/middle school season concludes, but these ninth graders are limited by 20 or 19 consecutive calendar weeks and the games (quarters) and tournament limits of their high school team. Once one of these limits is reached, the affected ninth grade student may no longer practice or compete with any school team. Ninth grade students may begin practice with the high school team on the first allowable high school practice date, but may not have practiced or competed with or against seventh and eighth graders earlier.

It is important all principals, athletic directors, and coaches who are responsible for middle level/junior high school and freshmen athletic programs be aware of these provisions so they may take advantage of and benefit from the flexible scheduling allowed in these school programs. At the same time administrators will be able to protect and maintain the eligibility of students who will be involved in these programs.

## Eligibility Rulings

All official eligibility opinions shall be in writing and shall bear the signature of the executive director. Verbal rulings are not official. Principals are reminded that correspondence concerning eligibility rulings, annual eligibility lists, applications for waiver of the transfer rule, hardship transfers and sanction forms, must be signed by the principal for consideration by the MSHSAA.

## August Appeals Summary

Held August 20, 2008

The Appeals Committee heard fifteen cases and ruled as follows:

a. Granted appeals for unrestricted eligibility under provisions contained in MSHSAA By-Law 238-a-8, Hardship Application Transfers:

1. Vashon High School
2. Joplin High School
3. Francis Howell North High School
4. Tipton High School
5. Fayette High School
6. Blue Springs High School (two appeals)
7. Rockwood Summit High School

b. Denied appeals to grant unrestricted eligibility under provisions contained in MSHSAA By-Law 238.3-a-8, Hardship Transfer Applications and

granted restricted eligibility under Transfer Waiver, By-Law 238.3-a-9:

1. Marquette High School
2. Wright City High School
3. Central (Park Hills) High School
4. Centralia High School

c. Denied appeal to grant eligibility under provisions contained in MSHSAA By-Law 238.3-a-8, Hardship Transfer Applications (no eligibility for 365 days as appeals deemed for athletic reasons):

1. Crystal City High School

d. Denied appeals to grant eligibility under provisions of Article IV, Section 6-p, Hardship Provision of the MSHSAA Constitution:

1. Center High School
2. Heartland Christian High School

## Foreign Exchange Student Eligibility Status

The MSHSAA staff receives many calls regarding athletic eligibility of foreign exchange/international students. During the 2007-08 school year there were 365 international student applications that came through the Association's office. That number increased from 226 during the 2006-07 academic year. MSHSAA By-Law 236 specifically addresses the eligibility of students from foreign countries.

First, the member schools have adopted the provision which permits a student who is participating in a foreign exchange program which is listed with the Council on Standards of the International Educational Travel (CSIET) to be certified as eligible with unrestricted eligibility provided all other essential eligibility requirements are met (e.g. age, entering school, semesters, etc.) These listed programs are the "MSHSAA approved programs." A student who is not participating in an MSHSAA approved program may only be certified as eligible at the junior varsity level for his or her high school career at an MSHSAA member school.

An international student attending a member school while participating in no foreign exchange program or one not listed by CSIET may be certified as eligible only at the junior varsity level. Should unusual circumstances surround such transfer the opportunity to appeal for eligibility within the established appeal process procedure provided in By-Law 1025 is always available. In these situations, the school will be filing the Hardship Transfer Application, FORM H, with written documentation.

School administrators should be cognizant of the standard procedure for accepting foreign exchange students. The area or field representative should make the initial contact with the school administration to confirm if and how many foreign exchange students the school would accept. The administration should refer to the CSIET List for all MSHSAA approved programs. This list can be located in the MSHSAA Handbook, the August issue of the "MSHSAA Journal" and the CSIET list publication book provided to each high school in August of each year and the MSHSAA web site. The list of approved programs changes every year with the updated list available annually in July.

School districts which are members of the Missouri School Board Association should review your own local policies for foreign exchange students as MSBA recognizes the list of programs established by NASSP which is the list of CSIET programs. Statewide, the Missouri Association of Secondary School Principals also recognizes the CSIET listed programs.

Contact from representatives of the foreign exchange programs should not be made with your coaches nor should potential families be approached to host a student being "marketed" for his/her ability in a sport.

Once a student is accepted in the school the "Foreign Student Eligibility Form" (Form FX) should be filed with the MSHSAA office. Foreign exchange

students should also have their names asterisked on the school eligibility rosters as they are transfer students.

Host families should be advised of student eligibility the same as the parents of any other student in school. No student is guaranteed any specific level of participation. Should you be advised that the company representative is providing inaccurate information regarding this matter, the MSHSAA office should be notified.

The responsibility to properly advise students and their families of eligibility requirements remains with each school's local administration. This same responsibility remains with the local school administration in regard to eligibility requirements for foreign exchange/international students.

It is hopeful this information will be of assistance to our school staffs and working with potential host families of young people desiring to have the educational exchange. Each local board of education will determine as to what level to participate in an exchange opportunity as well as what programs from which to accept students. Being informed of eligibility requirements and keeping host parents informed will be helpful to avoid confusion in your school.

It is important that local boards of education and school administrators require the field representative to request admittance of exchange students before being placed in your school. It should be emphasized to staff and patrons that students entering school with athletic reasons or selected as potential athletic contributors may find the student to be ineligible. Much of the integrity of the programs depends on the local school board policy and school administrators.

Should any field representative imply a sport motivation to place a student, the MSHSAA office should be notified immediately. Appropriate communications shall occur with the exchange company and CSIET. Please review By-Law 236, Foreign Student Eligibility in the *MSHSAA Official Handbook*.

### Appeals Committee Conference Call Summary

**Held Oct. 20, 2008**

The Three Member Emergency Panel of the MSHSAA Appeals Committee heard one case and ruled as follows:

a. Denied appeal to grant unrestricted eligibility under provisions contained in MSHSAA By-Law 238.3-a-8, Hardship Transfer Applications and granted restricted eligibility under Transfer Waiver, By-Law 238.3-a-9 (transfer was deemed as not being made for athletic reasons):

1. Mexico High School

## September Appeals Summary

*Held September 9, 2008*

Six cases were reviewed and decided on the basis of documentation presented by the Assistant Executive Director to the Appeals Committee:

a. Denied appeals to grant unrestricted eligibility under provisions contained in MSHSAA By-Law 238.3-a-8, Hardship Application Transfer and granted restricted eligibility under Transfer Waiver, By-Law 238.3-a-9:

1. Staley High School
2. Aurora High School
3. Logan-Rogersville High School

b. Denied appeals to grant eligibility under provisions of Article IV, Section 6-p, Hardship Provision of the MSHSAA Constitution:

1. Chilhowee High School
2. St. Francis Borgia High School (1st student)

c. Granted appeal for unrestricted eligibility under provisions contained in MSHSAA By-Law 238-a-8, Hardship Application Transfers:

1. Westport High School

The Appeals Committee heard eighteen cases and ruled as follows:

a. Granted appeals for unrestricted eligibility under provisions contained in MSHSAA By-Law 238-a-8, Hardship Application Transfers:

1. Smith-Cotton High School
2. Mehlville High School
3. Lee's Summit North High School (1st student)
4. Lafayette (St. Joseph) High School (1st student)
5. Lafayette (St. Joseph) High School (2nd student)
6. Rockwood Summit High School
7. North Callaway High School
8. Rich Hill High School

b. Denied appeals to grant unrestricted eligibility under provisions contained in MSHSAA By-Law 238.3-a-8, Hardship Transfer Applications and granted restricted eligibility under Transfer Waiver, By-Law 238.3-a-9:

1. Eureka High School
2. Lee's Summit North High School (2nd student)
3. Timberland High School
4. St. Francis Borgia High School (2nd student)
5. Lafayette (St. Joseph) High School (3rd student)
6. Tarkio High School
7. Lutheran (St. Peters) High School
8. Vianney High School
9. Whitfield High School

c. Denied appeal to grant eligibility under provisions of Article IV, Section 6-p, Hardship Provision of the MSHSAA Constitution:

1. North Harrison High School

*visit us online at  
www.mshsaa.org*

# NCAA Initial Eligibility Clearinghouse Change

Did you know that the NCAA has increased the number of required core courses a student must complete in high school to be eligible to participate in college athletics?

*Classes of 2005, 2006 and 2007*

All student-athletes must complete 14 core courses to be eligible to participate in NCAA Division I or Division II sports. The additional course may be taken in any of these areas: English, mathematics, natural/physical science, social studies, foreign language, philosophy or non-doctrinal religion.

*Class of 2008*

Division I: 16 core courses. One of the additional courses MUST be in mathematics. The other course may be in any area described above.

Division II: 14 core courses (no increase to 16).

*Find Out More On The Web*

If you would like to read more about these increases, or to see the specific core-course breakdown, please visit one of the following web sites:

- [www.ncaa.org](http://www.ncaa.org)
- [www.ncaaclearinghouse.net](http://www.ncaaclearinghouse.net)

Questions or comments about the new rules may be submitted to:

[academics@ncaa.org](mailto:academics@ncaa.org).

Colleges will only accept ACT scores received from the national ACT office.



# Leadership Training Class Certification Courses

The NIAAA certification process and the Leadership Training Classes (LTC) offer athletic administrators a national process to develop leadership and professionalism. All three levels of certification require that one have at least a Bachelor's degree and send an application form and fee to the NIAAA in Indianapolis. The three levels of certification are:

*The RAA (Registered Athletic Administrator)* which is for those with little or no experience in athletic administration. The RAA level requires that one take LTC 501 and 502, obtain the verifying signature of a sponsor (athletic administrator, principal, superintendent, state athletic/activities association staff), approval of a PDF (Personal Data Form) listing their experience, education, and contributions, and read the NIAAA Code of Ethics.

*The CAA (Certified Athletic Administrator)* is for those with two or more years of experience. It requires that one take LTC 501, 502 and 504, approval of the PDF, pass a CAA examination of multiple choice questions with at least 75 correct answers out of 100 questions, employed by (or retired from) a school, school district or state high school athletic/activities association in such capacity that the administration of interscholastic athletics is (was) among job responsibilities, and read the NIAAA Code of Ethics.

*The CMAA (Certified Master Athletic Administrator)* is for those with CAA certification. This level of certification requires that one take LTC 501, 502, 504, and 506. Additionally, the candidate must complete a minimum of six (6) LTC electives, three (3) each from Leadership and Management Categories. The candidate must be employed so that administration of interscholastic athletics is/was one's primary responsibility. In

addition to approval of the PDF, submit supporting documentation of all requirements and points earned since CAA designation, the candidate must complete a practical written exercise,

optional program implementation and read the NIAAA Code of Ethics.

For certification forms or further information, please contact the NIAAA in Indianapolis at (317) 587-1450.



# Reps on NFHS Committees

The NFHS sponsors several national committees. The majority of these committees are committed to the formation and adoption of rules regulating specific interscholastic sports. The state of Missouri is well represented on the various committees. A hearty congratulations is extended to the following individuals for their involvement on these committees.

<u>Representative</u>	<u>School/Town</u>	<u>Committee</u>
Beth Dampf	California	Citizenship Committee (Music)
Dennie Pendergrass	(Columbia)	Officials' Quarterly Publication Committee
Harv Antle	beria	Baseball Rules Committee
Stephanie Phillips	Kickapoo	Basketball Rules Committee
Nancy Milward	Nerinx Hall	Field Hockey Rules Committee
George Blase	MSHSAA Staff	Football Rules Committee
Maureen McVey	St. Joseph's Academy	Soccer Rules Committee
Tim Jermain	Jefferson (Conception Jct.)	Softball Rules Committee
Randy Pierce	Pattonville	Speech Rules Committee (Chair)
Dale Pleimann	MSHSAA Staff	Wrestling Rules Committee
Kerwin Urhahn	MSHSAA Staff	NFHS National Council

# June Board of Directors Summary

Held June 11, 2008

Motion Kinder, Brown second, to enter into closed session for matters involving legal actions or litigation involving MSHSAA including any confidential or privileged communications between the MSHSAA and its attorney. Section 610.021(1) R.S.Mo. Motion passed 9-0 on a roll call vote with Kinder, Gohn, Brown, Davis, Sumy, Edwards, Keel, Cornish and Richards voting yes.

Motion Keel, Cornish second, to return to open session. Motion passed 10-0 on a roll call vote with Kinder, Gohn, Brown, Davis, Sumy, Edwards, Keel, Chase, Cornish and Richards voting yes.

No action was reported out of closed session.

Approved minutes of the March 6, 2008, Board of Directors meeting and the April 4-5, 2008, Board of Directors meeting.

Approved the following general consent items as presented:

Nonfaculty Coaches Approved (By-Law 124)

Transfer Waiver Applications (By-Law 238.3-a-9)

(Duplicate school names indicates an additional transfer(s) student(s) for that school): Archie, Braymer, Cardinal Ritter, Cardinal Ritter, Central (Springfield), Central (Springfield), Central (St. Joseph), Chaminate, Clayton, Cooter, DeSmet, Ft. Zumwalt East, Ft. Zumwalt North, Hallsville, Hallsville, Hickman, John F. Kennedy, Joplin, Joplin, Lee's Summit Community Christian, Lee's Summit Community Christian, Lee's Summit Community Christian, Lutheran (Kansas City), Lutheran (St. Peters), Lutheran North, Marquette, Mexico, Miller Career, New Haven, O'Hara, O'Hara, Orchard Farm, Parkway West, Pembroke Hill, Perryville, Principia, Principia, Principia, Principia, Rockwood Summit, Savannah MS, Soldan International Studies, St. Clair, St. Pius X (Festus), St. Pius X (Festus), Stafford, Warsaw, Webster Groves, Wellington-Napoleon, Westport, and William Chrisman.

Transfer Hardship Applications (By-Law 238.3-a-8)

(Duplicate school names indicates an additional transfer(s) student(s) for that school): Aftton, Ash Grove, Benton, Bradleyville, Bradleyville, Brentwood, Cabool Junior, Cameron, Center, Center, Central (Kansas City), Central (Kansas City), Central (Kansas City), Central (Kansas City), Central (Kansas City), Central (New Madrid County), Chillicothe MS, Chillicothe MS, Chillicothe MS, Clearwater, Clinton, Concordia, Concordia, Crystal City, Dixon, Eldon, Eldon, Eldon, Elsberry, Elsberry, Englewood Christian, Farmington, Farmington, Fort Osage, Francis Howell Central, Fulton, Fulton, Grandview (Hillsboro), Highland, Hogan Prep Academy Charter, Joplin, Joplin, Joplin, Kennett, Kickapoo, Kickapoo, Kirkwood, Kirkwood, Lafayette (Wildwood), Lee's Summit Community Christian, Liberty, Lutheran South, Macon, Macon MS, Marquette, McCluer North, Mexico, Miller Career Academy, Nixa, North Callaway, Oak Park, Osage Junior, Parkway South, Parkway West, Pattonsburg, Pattonville, Plattsburg, Plattsburg, Poplar Bluff, Poplar Bluff, Potosi, Raytown South, Rich Hill, Richland, Ritenour, Rolla, Russellville, Salem, Savannah MS, Smith-Cotton, Ste. Genevieve, Sullivan, Sullivan, Sweet Springs, Trenton MS, Troy Buchanan, Troy Buchanan, Troy Buchanan, University City, Van Horn, Warren County, West County, West Platte, Westport, Whitfield,

Winnetonka, and Wright City.

Self-Reported Violations and/or Requests for Lesser Penalties (By-Law 910):

Recommend action by school be accepted with reprimand issued and administration acknowledged for self-reporting - John Burroughs - Soccer coach played an academically ineligible player in one contest, upon detection of ineligibility she was pulled from the contest, student removed from the team and the contest forfeited; Portageville - Self-reported a violation of by-laws 234 and 310 by allowing a student to participate in a baseball contest without having the required practices or being listed on the school's eligibility roster, the contest was forfeited and the school athletic director and coach counseled on proper verification of eligibility; Sumner - Self-reported a violation of By-Law 213 by using an academically ineligible student in a track meet, student removed from roster and points subtracted from team totals.

Recommend action by school be accepted and administration acknowledged for self-reporting with no further action - Camdenton - Self reported a violation of By-Law 235.1-a, two students participated in nonschool running event during the track season, students counseled and withheld from two school meets; Francis Howell Central - Self-reported a violation of By-Law 235 by a school track and field student-athlete participating in a non-school running event during the 2008 school track and field season. Following the discovery of the violation, the school counseled the student regarding non-school competition and withheld him from the next regular season meet at the student's level of competition; Jasper - Self-reported a violation of By-Law 212, once student has completed requirements of the legal system he is to be withheld from the same number of contest he participated in while ineligible.

Application for approval of Cooperative Sponsorship of Seventh and Eighth Grade Activity (Article III, Section 2): McDonald County School District - Noel, Anderson, Southwest City, Rocky Comfort, White Rock, and Pineville junior highs - Boys and Girls Basketball, Cheerleading, Boys and Girls Cross Country, 11-Man Football, Boys and Girls Track, Girls Volleyball, and Wrestling; North Callaway School District - Auxvasse, Hatton McCredie and Williamsburg junior highs - Boys and Girls Basketball, 11-Man Football, Girls Softball, and Boys and Girls Track; Twin Rivers School District - Quilin and Fisk middle schools - Girls Basketball.

Application for approval of Senior High School Cooperative Sponsorships (By-Law 106): Bucklin and Macon County high schools - Baseball; Pattonsburg and North Daviess high schools - Boys Softball and Boys Basketball; Southwest (Ludlow) and Breckenridge high schools - Baseball; Stanberry and Jefferson high schools - Wrestling.

Application for approval of Junior High School Cooperative Sponsorships (By-Law 107): Appleton City and Hudson junior highs - Music and Girls Volleyball; Bueker (Marshall) and St. Peter's (Marshall) junior highs - 11-Man Football, Boys and Girls Track; Community and St. Joseph's junior high schools - Boys and Girls Basketball and Boys and Girls Track; Craig and Fairfax junior high schools - Boys Basketball, 8-Man Football, and Boys Track; East Lynne and Strasburg junior highs

- Girls Basketball; Fairfax and Craig junior highs - Girls Basketball, Girls Track, and Girls Volleyball; Hannibal and Holy Family middle schools - 11-Man Football, Girls and Boys Basketball, Girls Volleyball, Wrestling, Girls Softball, and Girls and Boys Track; King City and Union Star junior highs - 11-Man Football and Boys and Girls Track; Knox County and Brashear junior highs - Girls Softball; Laura Speed Elliott and Saints Peter and Paul junior highs - 11-Man Football, Boys and Girls Track, Girls Volleyball and Wrestling; Macon and Immaculate Conception junior highs - Boys and Girls Basketball, 11-Man Football, Girls Softball, and Boys and Girls Track; Moberly and St. Pius X (Moberly) middle schools - 11-Man Football and Girls Softball; Moberly and Middle Grove middle schools - Wrestling; Osceola and Roscoe junior highs - Boys and Girls Basketball, 11-Man Football, Boys and Girls Track, and Girls Volleyball; Marceline and McCartan Memorial junior highs - Boys and Girls Basketball, 11-Man Football, Girls Softball, and Boys and Girls Track; Pattonsburg and North Daviess junior highs - Boys Basketball; Salisbury and St. Joseph junior highs - 11-Man Football; Southwest (Ludlow) and Breckenridge junior highs - 8-Man Football; Worth County and Northeast Nodaway junior highs - 8-Man Football.

Truman - Request to hold sports camps during the school year. (Inclement Weather)

William Chrisman - Request to hold sports camps during the school year. (Inclement Weather)

Joplin - Request to hold sports camps during the school year. (Inclement Weather)

Beaumont - Relief of By-Law 123 (Medical Hardship) Liberty - Relief of By-Law 640 to attend a NAQT meet Memorial Day Weekend

Valle Catholic - Request to hold sports camp during the school year. (Inclement Weather)

Christian Brothers - Participation of student in the Easter Bowl, USTA National Spring Championship (April 6-13, 2008) in Rancho Mirage, California

Monett - Request to hold sports camp during the school year. (Inclement Weather)

Columbia Public Schools - Request to hold sports camps during the school year. (Inclement Weather)

North Kansas City - Participation of students in National Academic Scholar Bowl before the end of the school year due to inclement weather.

Motion Davis, Brown second, to enter into closed session for matters involving the eligibility status of students where personally-identifiable private information from a student's educational record may be reviewed or discussed. Section 610.021(6 and/or 14) R.S.Mo.; 20 U.S.C. 1232g(b); 34 C.F.R. 99.1 et seq. Motion passed 10-0 on a roll call vote with Kinder, Gohn, Brown, Davis, Sumy, Edwards, Keel, Chase, Cornish and Richards voting yes.

Motion Keel, Gohn second, to return to open session. Motion passed 10-0 on a roll call vote with Kinder, Gohn, Brown, Davis, Sumy, Edwards, Keel, Chase, Cornish and Richards voting yes.

The following was reported out of closed session: Motion Kinder, Richards second, that based on information provided through the investigative process and school self-reports, that Vashon High School be  
*continued on page 9*

required to forfeit all games during the 2000-01, 2002-03, 2003-04, 2004-05 and 2005-06 seasons in which the students determined to be ineligible participated.

Further, all district and state trophies and plaques be returned. Motion passed 10-0 on a roll call vote with Kinder, Gohn, Brown, Davis, Sumy, Edwards, Keel, Chase, Cornish and Richards voting yes.

The Board clarified that conditions of the forfeitures shall include modification of Coach Floyd Iron's coaching records to reflect the forfeited games, and all records achieved by the ineligible students during the years in question be stricken.

Motion Sumy, Keel second, that all team trophies and awards presented to Vashon High School during the time period in question be returned to the event organizers. Motion passed 10-0 on a roll call vote with Kinder, Gohn, Brown, Davis, Sumy, Edwards, Keel, Chase, Cornish and Richards voting yes.

Motion Kinder, Chase second, to enter into closed session for matters involving hiring, firing, disciplining or promotion of MSHSAA employees where personal information about an employee may be discussed or recorded. Section 610.021(3) R.S.Mo. Motion passed 10-0 on a roll call vote with Kinder, Gohn, Brown, Davis, Sumy, Edwards, Keel, Chase, Cornish and Richards voting yes.

Motion Gohn, Richards second, to return to open session. Motion passed 10-0 on a roll call vote with Kinder, Gohn, Brown, Davis, Sumy, Edwards, Keel, Chase, Cornish and Richards voting yes.

No action was reported out of closed session.

Recognized Sumy, Davis, and Edwards for their years of service on the MSHSAA Board of Directors with a plaque.

Accepted the results of the survey regarding summertime sports activities and contact with school sport coaches. The topic will be a part of the 2008-09 Area Meetings for school discussion and review.

Approved the Board Policy on Reported Violations for final approval and implementation.

Approved items 6, 7, and 10 as amended, from the February 26, 2008 meeting of the Swimming and Diving Advisory Committee.

Accepted the utilization of Screen Assist, LLC to conduct background checks on all registered officials for the 2008-09 school year.

Long reported that the financial statements for April and May were not ready and will be presented to the Board at its September meeting. He noted the budget document was still in progress and will also be finalized this summer. Urhahn highlighted some of the proposed larger budget items such as phase two of the web site, additional staff, building maintenance and projects, background checks, etc. Long also reported that the FY 2008 audit will once again be held in October with findings presented to the Board at its December meeting.

Awarded the 2008-11 trophy and plaque vending contract to Collegiate Awards.

Awarded the 2008-11 medal vendor contract to Medalcraft Mint of Green Bay, WI.

Approved items 1-12 and 14 and item 13 as amended, of the May 28, 2008 meeting of the Academic Competition Advisory Committee.

Approved items 2-4, approve item 5 as amended, deny item 6, and table items 1, and 7 from the April 18, 2008 meeting of the Basketball Advisory Committee.

Approved items 1, 4, 5 and 9, item 3 (as amended), item 10 (as amended - Fremont Hills included unless they are unable to host due to weather, then they come out of rotation). The Board took no action on item 8 and denied items 2 and 6, while tabling item 7 from the May 23, 2008 meeting of the Golf Advisory Committee.

Motion Richards, Brown second, to enter into closed session for matters involving the eligibility status of students where personally-identifiable private information from a student's educational record may be reviewed or discussed. Section 610.021(6 and/or 14) R.S.Mo.; 20 U.S.C. 1232g(b); 34 C.F.R. 99.1 et seq. Motion passed 8-0 on a roll call vote with Brown, Davis, Sumy, Edwards, Keel, Chase, Cornish and Richards voting yes.

Motion Cornish, Richards second, to return to open session. Motion passed 8-0.

The following action was reported out of closed session.

Motion Richards, Cornish second, that based on information available to the school and the action it took to grant a lesser penalty than forfeitures to Highland High School. Motion passed 7-1 on a roll call vote with Brown, Davis, Edwards, Keel, Chase, Cornish and Richards voting yes. Sumy voted no.

Denied the request by Marion C. Early to adjust its official MSHSAA enrollment for the next classification cycle.

Approved items 1-19 from the May 21, 2008, meeting of the Music Advisory Committee.

Approved items 2-19 as presented and take no action on item 1 from the April 29, 2008, meeting of the Speech and Debate Advisory Committee.

Binggeli presented eight recommendations from the April 23, 2008, meeting of the Sports Medicine Advisory Committee. There was no quorum for the meeting, so all recommendations were officially noted as the committee going on record. St. John's Medical Center in Springfield also did an analysis and workbook regarding heat exhaustion. The Board accepted the report of the Sports Medicine Advisory Committee with no action.

Accepted the proposals for catastrophic and tournament play insurance coverage. Further, the Association will cover the catastrophic insurance increase for this year only.

Determined to issue a letter of reprimand to the schools that used unregistered officials during the 2007-08 school year.

Directed staff to withhold license renewals from the officials who failed to respond to Special Reports during the 2007-08 school year, pending receipt of the required response.

Resolved to withhold offending schools from the 2008-09 MSHSAA district and state series in all activities until they have properly responded to special reports issued.

Placed schools on probation and issue a \$10 fine, for this year only, to any school that failed to submit officials ratings during the 2007-08 school year due to the new ratings system.

Certified the results of the 2008 Annual Ballot, Board of Directors elections and Investigative Committee elections.

Approved continuation of participation in the School Administrator's Coalition for 2008-09.

Tabled further action on the St. John's Heat Index and Exhaustion Policy Manual and send this issue to the Sports Medicine Advisory Committee for study and review at its April 2009 meeting.

Approved the staff recommendations for the 2008-09 Distinguished Service Awards and Irvin A. Keller Award.

Resolved to permit Jefferson City High School to participate in the St. Louis District for MSHSAA speech and debate activities.

MSHSAA staff to direct Mr. Harold Case not to coach at any MSHSAA member school without prior approval from the MSHSAA due to a history of nonfaculty coaching violations.

Reprimanded the administration of Santa Fe for various violations involving nonfaculty coaches during the 2007-08 school year and require the school's athletic director to attend the MIAAA/MSHSAA Athletic Director's Workshop in August.

Directed MSHSAA staff to offer Mr. Martin Hook, the position of state music festival manager, beginning in 2008-09, to hire adjudicators and secure festival facilities for the MSHSAA Music Festival for an annual fee of \$2500.

Marshall requested emergency consideration to grant Mike Ballard relief from the 60-hour coaching requirements and allow the school to sponsor a swimming program. The Board did not take action on the request and asked the staff to inform Marshall of the coaching restrictions outside the high school season and the assistant coaching requirements that might affect Mr. Ballard's opportunities to coach nonschool swimming and diving which he currently does during the school year.

Suspended Mr. Pamlin's officials' license until he can present reason why he should be allowed to register as an MSHSAA official in the future.

Approved the revised agreement with MMEA as presented.

Urhahn presented a request by Northeast Nodaway to approve Kirby Dowis as a nonfaculty golf coach. The Board did not take action and asked staff to notify Mr. Dowis of the procedures to become a certified assistant coach.

Reaffirmed previous action to approve the 2008 and 2009 Class 5 football playoff brackets.

The Board reviewed the following information material: miscellaneous newspaper articles; basketball tournament radio coverage summary; rooming needs for 2008-09 Board meetings; rotation of Board officers; Sportsmanship Summit reservation and hotel information. Kinder will be president of the Board for 2008-09, while Keel will serve as vice president.



Staley, Stockton, Stockton, Stoutland, Stoutland, Strafford, Strafford, Sullivan, Tarkio, Timberland, Tipton, Trenton, Trinity Catholic, Trinity Catholic, Truman, Truman, Twin Rivers, Twin Rivers, Union, University City, University City, University City, Valley, Valley, Vashon, Vashon, Versailles, Versailles, Vianney, Vianney, Vianney, Vianney, Warren County, Warrensburg, Warrensburg, Warsaw, Waynesville, Weaubleau, Webb City, Webb City, Webb City JH, West County, West County, West Platte, Westminster Christian, Westport, Westport, Whitfield, Willard, William Chrisman, Windsor, Winfield, Winston.

*Self-Reported Violations and/or Requests for Lesser Penalties (By-Law 910):*

Recommend action by school be accepted with reprimand issued and administration acknowledged for self-reporting - Cassville -

Self-reported a violation of By-Law 810, soccer player received two yellow cards in a game, athlete to sit out 2 games, game he participated in with the yellow cards to be forfeited; Highland -

Self-reported a violation of By-Law 353, practiced in full gear and had body to body contact on the third day of football practice, squad practiced two additional days without gear and coaches instructed on regulations to avoid future violation of this nature; Marion C. Early - self-reported a violation of By-Law 231, students who returned merchandise received have eligibility reinstated, student not returning merchandise is ineligible in basketball for 365 days from receipt or until he returns merchandise or pays retail value for it.

Recommend action by school be accepted and administration acknowledged for self-reporting with no further action - Eureka - Self-reported a violation of By-Law 235.1, cross country member participated in a Labor Day 5K Run, student to be withheld from one contest.

*Application for approval of Senior High School Cooperative Sponsorships (By-Law 106):* Craig and Fairfax high schools - Cheerleading (2008-09 and 2009-10); McKinley and Metro high schools - Music, Speech, Boys and Girls Cross Country, Girls Volleyball, Boys and Girls Soccer, Boys and Girls Tennis, Boys and Girls Basketball and Baseball.

*Application for approval of Junior High School Cooperative Sponsorships (By-Law 107):* Hannibal and Holy Family middle schools - Boys and Girls Cross Country (2008-09); Leeton and Shawnee junior highs - Boys and Girls Basketball (2008-09); Norbome and Stet junior highs - Girls Softball (2008-09); Strasburg and East Lynne middle schools - Boys Basketball (2008-09).

Motion Keel, second Gohn, to enter into closed session for matters involving confidential or privileged communications between the MSHSAA and its attorney. Section 610.021(1) R.S.Mo. Motion passed 9-0 on a roll call vote with Kinder, Keel, Brown, Coleman, Cornish, Eaton, Gohn, Richards and Sulser voting in the affirmative.

Motion Richards, second Brown, to return to open session. Motion passed 9-0 on a roll call vote with Kinder, Keel, Brown, Coleman, Cornish, Eaton, Gohn, Richards and Sulser voting in the affirmative.

No action was reported out of closed session.

Long reported that the financial statements are currently being updated and should have more information at the January meeting.

Long reported that the field work for the audit is being done and will have more information by mid-December.

Motion Richards, second Keel, to accept the recommendation of the Academic Competition Advisory Committee. Motion passed 9-0

Tabled recommendation #1 to area meetings, send recommendation #2 send back to the Baseball Advisory Committee and accepted recommendation #3 of the Baseball Advisory Committee.

Approved items 1, 3, 5, 6, 7, 8 and 9; and tabled items 2 and 4 of the Track Advisory Committee.

Urhahn met with Athletic Directors' Executive Board and Athletic Directors Advisory Committee at their fall meeting on September 8<sup>th</sup>. They went through track and baseball ideas getting input from the schedulers of those events. Urhahn reported that it was a very productive meeting. He also encouraged the athletic directors to get involved with MIAAA.

Determined to increase the late fee for state swimming and diving to \$100 and to add the following wording to the Swimming Manual. "Penalty: Entries submitted later than the due dates/times listed will not be accepted unless they are received at the MSHSAA office prior to the drawing of heats; further, a late fee of \$100.00 will be required. NOTE: Heats will be drawn on Sunday, preceding Friday's state competition."

Appointed Toni Hill, Superintendent at Portageville, to replace retiring Region 2 Board of Directors member, Phyllis Chase, for a one-year term filling a vacancy on the Board.

Directed the MSHSAA staff to move forward with the MSHSAA computer web site design project as presented.

Kinder presented some information from a group of former pro-athletes in the Kansas City area, called "Drug Free World". The group wants MSHSAA to allow athletes to wear a patch on the uniform. No action was taken to allow the Board more time to review the presentation as well as looking into possible National Federation regulation on uniforms.

Urhahn reported to the Board of a mistake by MSHSAA with the softball proposals. The Association tried to research communities that could support the championships. Jefferson City said they wanted a proposal, but was left off the mailing list in error. Urhahn met with the Jefferson City CVB to discuss the situation as well as a local newspaper article that was critical of the Association. A question of if towns could make presentations directly to the Board on RFPs was asked. Gohn commented that he trusts the MSHSAA staff to gather information needed to make an informed decision therefore eliminating the need for presentations. Urhahn added that he would include an e-blast to schools to inform them of the process.

Urhahn informed the Board of one of the discussions during the Section 5 meetings. Some states have cut back on games allowed, for example 10 percent. He asked if the Board believed the Association needed to do more for the schools. In tennis we have districts with 12 or 13 schools, should we have more districts to cut down travel. Another possibility could be adding a round where only two schools meet for the next round. Does it need to be a local school action or MSHSAA wide action? The Board was informed the State Legislature is looking heavily into a four-day school week. One negative aspect would be cutting games locally in a small school. Urhahn added that Georgia cut all sports by 10% except one sport (football). He also added that he can send information to all superintendents to see what they are thinking. He will make a survey, send it to the Board first, then out to the different groups.

Directed MSHSAA staff to investigate further the possibility of By-Law violations in the St. Louis field hockey complaint.

It was reported by Urhahn the Association had received e-mails from a father of a football player at Lee's Summit North. Urhahn has talked with the athletic director at Lee's Summit North. The person sending the e-mails is not the guardian, as student lives with his mother. The school attorney has advised Lee's Summit North not to communicate with the gentleman. The mother has sole custody of student. The district activities director and the school director has addressed the appearance of requiring summer camps to be on the team with the head coach. No action taken

Approved the baseball cooperative sponsorship between LaMonte and Green Ridge high schools for the 2008-09 and 2009-10 school years.

Approved Farmers Insurance sponsorship.

Kinder commended the MSHSAA staff for getting such a sponsorship.

Amended the Board Agenda to add a Westran request for a lesser penalty.

Granted a lesser penalty to Westran High School than forfeitures of the school's first seven games.

Urhahn informed the Board that there are two districts for cross country that no school wants to host the district meet. Binggeli has had to find a host for one of them for the last two years. Urhahn also informed the Board that two schools did not make the site selection committee meeting so they will host for the next two years. Urhahn wants to add language to each sport's manual that if no one wants to host the district tournament or meet, then no one will advance out of this district. Richards added he would like to also add the reverse, that if a host does not meet host requirements. If there are schools that meet the requirements that the Association should strongly suggest that those sites are used. There were no objections to telling districts of new policy.

Motion Keel, second by Brown, to move into closed session. Motion passed 9-0 on a roll call vote with Kinder, Keel, Brown, Coleman, Cornish, Eaton, Gohn, Richards and Sulser voting in the affirmative.

*continued on page 12*

September Board of Directors Meeting Summary, con't from page 11

Motion Keel, second Brown to return to open session. Motion passed 9-0 on a roll call vote with Kinder, Keel, Brown, Coleman, Cornish, Eaton, Gohn, Richards and Sulser voting in the affirmative.

The following action was reported out of closed session.

Motion Keel, second Sulser, to grant unrestricted eligibility to a student of Heartland Christian High School. Motion passed 7-2 on a roll call vote with Kinder, Keel, Brown, Coleman, Cornish, Gohn, and Sulser voting yes and Eaton and Richards voting no.

Gohn would like to bring possible changes to By-Law 212 to the Area Meetings. The Board asked the staff to review the by-law for possible revisions and could discuss at the December meeting.

Urhahn informed the Board that he pulled every school that signed up for a fall sport, then checked for an eligibility roster. There were 96 schools that did not have a roster put in yet, mostly in St. Louis for lacrosse. Urhahn will follow with a letter to fix in short manner, adding that anyone that does not have a roster before the district tournament will have to forfeit all contests. Urhahn hopes that schools will realize that the Association does check if a school has filed the proper documents. It helps get the Association the correct numbers for insurance and districts for next year.

Amended the agenda to take action on the request to dissolve a cooperative sponsorship between East Lynn and Strausburg junior high schools.

Dissolved the cooperative sponsorship for boys basketball between East Lynn and Strausburg junior high schools.

Motion by Gohn, second by Eaton to go into closed session. Motion passed 9-0 on a roll call vote with Kinder, Keel, Brown, Coleman, Cornish, Eaton, Gohn, Richards and Sulser voting in the affirmative.

Motion Keel, second Cornish, to return to open session. Motion passed 9-0 on a roll call vote with Kinder, Keel, Brown, Coleman, Cornish, Eaton, Gohn, Richards and Sulser voting in the affirmative.

The following was reported out of closed session.

Motion Richards, second Eaton, to deny the request for eligibility to the student of Francis Howell North High School. Motion passed 6-3 on a roll call vote with Keel, Brown, Coleman, Eaton, Gohn and Sulser voting yes; Kinder, Cornish, and Richards voting no.

Motion Richards, second Keel, to deny the appeal under the Hardship Transfer for the student of Vianney High School. Motion passed 9-0 on a roll call vote with Kinder, Keel, Brown, Coleman, Cornish, Eaton, Gohn, Richards and Sulser voting in the affirmative.

Motion Gohn, second Richards to deny the request for unrestricted eligibility to the student of Centralia High School due to lack of hardship circumstances. Motion passed 9-0 on a roll call vote with Kinder, Keel, Brown, Coleman, Cornish, Eaton, Gohn, Richards and Sulser voting in the affirmative.

Motion Cornish, second Gohn, to grant unrestricted eligibility to the student of Wright City High School. Motion passed 8-1 on a roll call with Kinder, Keel, Brown, Coleman, Cornish, Gohn, Richards, and Sulser voting yes; Eaton voting no.

Motion Keel, second Sulser, to grant unrestricted eligibility to the student of Staley High School. Motion

passed 9-0 on a roll call vote with Kinder, Keel, Brown, Coleman, Cornish, Eaton, Gohn, Richards and Sulser voting in the affirmative.

Lee's Summit - Hearing on Interpretation of By-Law 212 — Presenting to the Board are: Dr. John Faulkenberry- Principal at Lee's Summit HS; Cheryl Bramlette- AD at Lee's Summit North HS; Dan Schnell-AD at Lee's Summit HS and Darwin Rold - District AD for Lee's Summit School District. Discussion was presented by the school on what situations warrant making a student ineligible and the need to reword By-Law 212. No action was taken by the Board on this hearing.

Motion Keel, second Sulser, to enter into closed session. Motion passed 9-0 on a roll call vote with Kinder, Keel, Brown, Coleman, Cornish, Eaton, Gohn, Richards and Sulser voting in the affirmative.

Motion by Keel, second by Brown, to come return to open session. Motion passed 9-0 on a roll call vote with Kinder, Keel, Brown, Coleman, Cornish, Eaton, Gohn, Richards and Sulser voting in the affirmative.

The following action was reported out of closed session.

Motion Brown, second Keel, to grant unrestricted eligibility to the student of Lee's Summit North High School. Motion passed 7-2 on a roll call vote with Kinder, Keel, Brown, Coleman, Cornish, Gohn, and Sulser voting yes; Richards and Eaton voting no.

Motion Gohn, second Eaton, to table the decision to allow the student of St. Francis Borgia High School to work with the prosecuting attorney in obtaining either a "no charge" letter or information on status from Franklin County prosecuting attorney. Motion passed 9-0 on a roll call vote with Kinder, Keel, Brown, Coleman, Cornish, Eaton, Gohn, Richards and Sulser voting in the affirmative.

Motion Keel, second Gohn, to grant unrestricted eligibility to the student of Lutheran (St. Peters) High School. Motion passed 7-2 on a roll call vote with Kinder, Keel, Brown, Coleman, Cornish, Gohn, and Richards voting yes; Sulser and Eaton voting no.

Past Board Meetings

For historical Board summaries, click on the Advisory Committees link on the MSHSAA web site ([www.mshsaa.org](http://www.mshsaa.org)).

Future Board of Directors & Appeals Meeting Dates

Board of Directors Meeting Dates

- January 28-29, 2009 - MSHSAA office, Columbia (Wed.-Thu. of Week 30)
  - March 12, 2009 - MSHSAA office, Columbia (Thu. of Week 36)
  - April 3-4, 2009 - Tan-Tar-A, Osage Beach (Fri.-Sat. of Week 39)
  - June 17, 2009 - MSHSAA office, Columbia (Wed. of Week 50)
- (all meetings begin at 8:30 a.m., except the April 3-4 meeting which begins at 1 p.m.)

Appeals Committee Meeting Dates

- March 17-18, 2009 - MSHSAA office, Columbia (Tue.-Wed. of Week 37)
- (all meetings begin at 8:30 a.m.)

Anyone attending a meeting in the MSHSAA office who requires auxiliary aids or services should request such services by contacting the executive director of the MSHSAA, telephone (573) 875-4880, no later than 48 hours before the meeting. Hearings of student eligibility shall be closed as matters involving the eligibility status of students where personally identifiable private information from a student's educational record will be reviewed or discussed. Section 610.021(6 and/or 14) R.S.Mo.; 20 U.S.C. 1232g(b); 34 C.F.R. 99.1 et seq. All other portions of all meetings are open.

Hill Appointed To MSHSAA Board of Directors

Following the resignation of Phyllis Chase, there was an opening for a District 2 At-Large representative. The Board of Directors voted unanimously to appoint Toni Hill, current superintendent at Portageville School District, to fill the vacancy.

Hill earned a bachelor's of arts degree in elementary education from Southeast Missouri State University in 1996. Three years later she graduated with a master's degree in secondary administration. In 2006 she earned a Specialist in Education degree from SEMO as well. Hill is currently finishing Ed.D in Educational Leadership and Policy Analysis from the University of Missouri.



Toni Hill

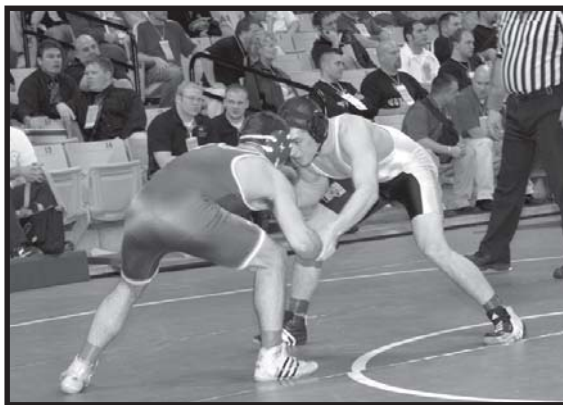
Starting her teaching career in Hayti as a sixth and seventh grade math teacher, Hill has also taught freshman math and science at Bloomfield before entering administration. Her transition into administration began at Bloomfield as the Middle School Principal. She then served as the High School Principal for six years before taking over at Portageville three years ago.

Hill and her husband, Jeremy, have three children.

# Weight Control Requirements in Wrestling

All wrestlers shall utilize a weight-control program which will discourage severe weight reduction and/or wide variations in weight, because this may be harmful to the competitor. Such a program should be planned to involve the wrestler, his parents, his physician and his coach in establishing the minimum certified weight. An ideal program would be one where a medical professional would assist in establishing a minimum weight through the use of checking body fat and hydration. The recommended minimum body fat should not be lower than 7 percent in males and 12 percent in females." All wrestlers, grades 9-12, must be assessed by a MSHSAA Certified Assessor (list of assessors on the MSHSAA web site). The assessors will enter the information for each wrestler assessed into the NWCA Web Site. Once entered this information will create an Alpha List for each school. A wrestler is not eligible to compete against another school, at any level, including exhibition matches, until the wrestler's name appears on the school's printout of the Alpha List.

If a coach enters a wrestler into competition against another school prior to that wrestler's name appearing on the school's Alpha List the coach has used an ineligible wrestler. PENALTY: 1) That match is forfeited; 2) The coach is ineligible to coach at the next contest at the same level - just as if he had been ejected; and 3) The wrestler is ineligible to wrestle at the next contest at the same level, after



having his weight assessed, - just as if he had been ejected.

A wrestler is eligible for two weight classes without recertifying his/her minimum weight class. The wrestler is eligible for the weight class his Daily Minimum Weight, based on 1.5% weight loss per week, places him and the weight class above that. (Example: Wrestler's Daily Minimum Weight is 138. Wrestler can compete at 140 or 145 without recertifying his minimum weight class.) If this wrestler weighs less than his Daily Minimum Weight he may still wrestle. (Example: This wrestler weighs 134 which is 4 pounds below his minimum weight for that date. Wrestler can wrestle at 140 only.) If the wrestler weighs more than his Daily

Minimum Weight he may still wrestle. (Example: This wrestler weighs 142 which is 4 pounds above his minimum weight for that date. Wrestler can wrestle 145 only. If the wrestler wrestles at 152 his minimum weight is recertified at 145 for the remainder of the season.

The coach is responsible for presenting the NWCA List with the minimum weight for that date for each of his wrestlers. (The coach should have a copy for the visiting coach.) If the coach fails to present the NWCA List at the weigh-in the coach shall fax the NWCA list to the opposing coach within 24 hours. The official shall file online a special report noting the failure of the coach to have his NWCA List

at weigh-ins and the opposing coach shall notify the the MSHSAA Office if the NWCA list is not received within 24 hours.

Each wrestler is required to make scratch weight, at least once, during the regular season once he/she has reached the minimum weight class they plan to wrestle in the District Tournament as determined by their weight management plan. The deadline for a wrestler to weigh-in at scratch weight is January 31st, 2009. Pounds for additional days of competition cannot be used to make scratch weight.

## 2009 Postseason Wrestling Terms & Conditions

The following items apply to the district and state wrestling tournaments this year:

- There will be four classes in wrestling.
- The MSHSAA Wrestling Championships will be held at Mizzou Arena in Columbia, February 19-21, using a double-elimination format with complete wrestlebacks to third place with 16 qualifiers in each weight class.
- Tickets: \$8 per session (*good for one entry to the facility*)
- Time Schedule:
  - Session 1: Thursday, 10 a.m. (*Class 1 & 2 first round and first-round wrestlebacks*).
  - Session 2: Thursday, 5 p.m. (*Class 3 & 4 first round and first-round wrestlebacks*).
  - Session 3: Friday, 9:30 a.m. (*Quarterfinals, second-round wrestlebacks, Semifinals and third-round wrestlebacks*).
  - Session 4: Saturday, 10 a.m. (*Fourth-round wrestlebacks, third-place and fifth-place matches*).
  - Session 5: Saturday, 4:30 p.m. (*Finals*).
- There will be no sectional tournament.
- Wrestlers will be provided with a two pound growth allowance on February 1st.
- There will be a brief coaches meeting held at the state tournament prior to competition, therefore, it will be extremely important that

all coaches read all information provided at the district tournament and all information provided in the state packets.

- Wrestlers will not receive an additional pound between the district and state tournaments. Weight classes for the state tournament for each day will be as follows:
  - Thursday (*105, 114, etc.*)
  - Friday (*106, 115, etc.*)
  - Saturday (*107, 116, etc.*)
- The district tournament will be held February 13-14 and will be two-day tournaments comprised of approximately 12-14 schools. The top four place finishers in each weight class will advance directly to the state tournament. If at the district seeding meeting it is determined that there are no more than nine wrestlers in each weight class the district tournament shall be held on Saturday only.
- It is permissible to schedule 15 contests (*no more than six of which may be tournaments*). However, an individual wrestler shall represent his school in no more than a maximum of 50 matches, whether they are scoring or not, prior to the district tournament.

### Wrestling Tournament Reminders

Every year the MSHSAA receives numerous questions about what is permitted and what is not concerning wrestling tournaments. For example, a frequently asked question is how many matches can a wrestler participate in during a tournament? The answer is a maximum of five matches each day of the tournament. The following three items should answer most questions.

- Tournament definition: "Any event in which awards are given and/or a champion is determined by any means or any format that involves five (5) or more teams, at one site, on any given date. All other contests at one site, on any given date will count as one non-tournament event." By Law 381.1b
- Senior High School Wrestling Teams may compete in 15 events (no more than 6 of which may be tournaments).
- There is no limit on the number of teams participating in a tournament provided no team will compete on more than one school day, and competition on a school day does not begin prior to 4:00pm.
- Round robin tournaments or pools shall include no more than six schools.
- No wrestler shall represent his school in more than one weight class in any meet or compete in more than five matches (championship or consolation) in any one day.
- No wrestler shall compete in more than 50 matches prior to the district tournament.

# NFHS Makes Changes to Free Throw Lane Markings

## Mandatory Coaches Box

It has come to the attention of the MSHSAA that there are numerous MSHSAA member schools that have gymnasiums with basketball courts that do *not* have the mandatory coaches boxes marked in paint on their court. There is a mandatory basketball game rule that involves these coaches boxes that *must* appear on the court.

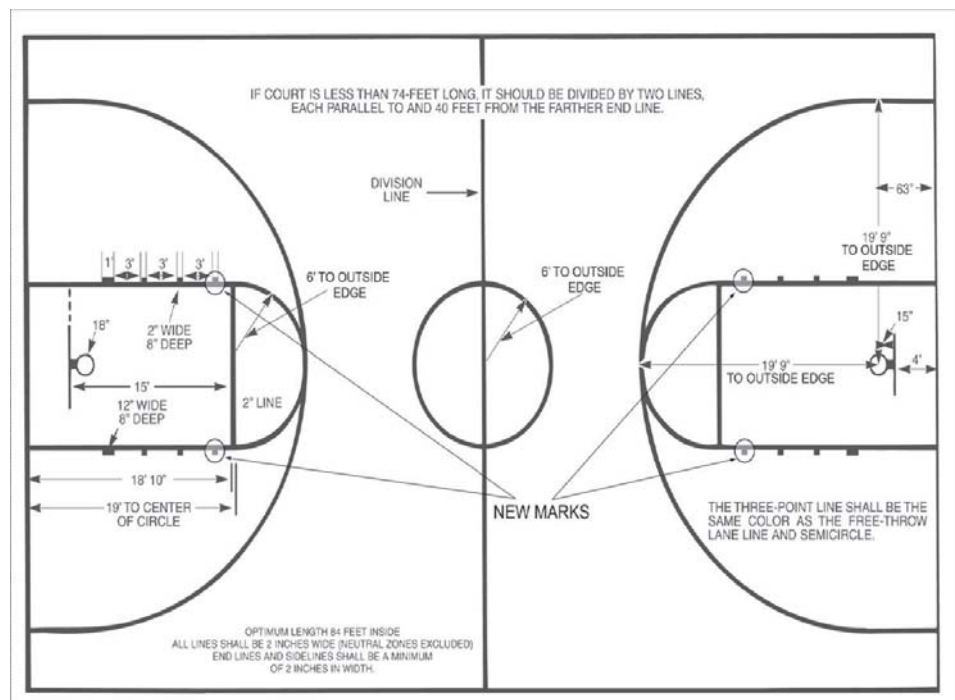
Therefore, on all basketball courts that do not have these mandatory coaches boxes painted on the court, it is the responsibility of the host game management to place temporary strips of tape on the court before an interscholastic contest may begin. Officials are instructed not to begin any interscholastic contest until there are visible coaches boxes on the basketball court. These coaches boxes are to be located between 14 feet and 28 feet from each baseline unless an alternative location is approved in writing by the MSHSAA. Cooperation between MSHSAA member school host game management and game officials is appreciated and expected to insure the required fourteen-foot coaches boxes are present on all interscholastic basketball courts.

## Team Shall Not be Removed in Protest

The attention of coaches is called to MSHSAA By-Law Section 811 which provides that a school whose coach removes a team from play in protest may be required to appear before the Board of Directors at its next meeting to show reason why the school shall not be suspended. Removal of a team in protest is considered a gross act of unsportsmanlike conduct. If an emergency occurs of some type that would make it advisable to discontinue the contest this should be done by mutual agreement of the two schools and the officials. If done in protest, the provisions of By-Law Section 811 will apply.

The National Federation has changed the free throw lane markings. In this change all players have moved up one space on the free-throw lane. The lane areas from the end line up to, and including, the neutral-zone marks, shall remain vacant. The old 2" x 8" marks nearest the end line do not need to be removed. However, new 2"x 8" marks

must be added to the free throw lane nearest the free throw line. The diagrams below depict the new court markings as well as how the athletes will line up during a free-throw attempt. If you have any questions regarding court markings, call the MSHSAA for further clarification.



## Free-Throw Lane Spaces Changed

### 8-1-4b, c, d, e

© REFEREE ENTERPRISES, INC. 2008
Frame 2

# Holiday Basketball Tournament Reminders

All member schools should review MSHSAA By-Law 311 (Tournament, Meet, and Multiple-game Event Sanctioning Regulations) to insure that all provisions of the regulation are being met as they apply to all sports. Particular attention should be directed to the specific regulations regarding the conducting of a Christmas or Thanksgiving holiday tournament. It is important that all member schools are familiar with these provisions if they plan to host a holiday tournament or before they accept an invitation to participate in one. Listed below are two important specific reminders:

1. A tournament held during the Christmas or Thanksgiving holidays can include no more than 16 schools on a bracket that is scheduled so no school will compete on more than one school night preceding a school day, and that causes no loss of school time.
2. A tournament held during the Christmas holidays that begins no earlier than the day following Christmas Day and ends before any school entered resumes classes following the holidays may consist of two divisions with no more than 16 teams in each



division competing for divisional honors only or three divisions with no more than 8 teams in each division competing for divisional honors only.

If you have any questions about MSHSAA By-Law 311, call the MSHSAA for further clarification.

## 2008-2009 Basketball Game Timing Rule

The Basketball Game Timing Rule shall be used for all interscholastic games both boys and girls, including high school varsity, junior varsity, sophomore, freshman, and all junior high contests. A running clock shall be used when after the end of the third quarter there is a point differential of 30 points or more. The clock will be stopped only under the following conditions:

1. Charged time-out
2. Injury time-out
3. To confer with scorers or timers, if necessary
4. Because of unusual delay in getting a dead ball alive
5. To administer all technical, intentional, flagrant and disqualifying fifth personal fouls
6. For any emergency

After these clock stoppages, the clock will begin to run again with normal play resuming procedures. If during the fourth quarter the point differential drops below 30 points, normal timing will resume until the 30 point differential has been reached again or the game ends.

# Single-Day Basketball Quarter Participation Standard

Coaches are reminded that MSHSAA By-Law 341a restricts basketball players from participating in more than five quarters on one calendar date. If a participant plays in a previous game on the same day or evening (either the junior varsity preliminary or some other game that day) then the total number of quarters in both games may not be greater than five. For example, a player who was in three quarters of the junior varsity contest

may participate in only two quarters of the varsity game.

This is an eligibility standard. Thus, the game officials have no authority to become involved in matters relating to the five-quarter rule. Coaches and bench personnel (scorers) should discuss in advance of the varsity contest the number of quarters each boy and girl may play.

The minimum penalty for using a player for more than five quarters on a calendar date is forfeiture of the game in which the violation occurs. Over the course of a season, a player may play no more quarters than five times the number of games scheduled for the highest team on which he/she plays plus the allowable tournaments. This could be 100 quarters, if the team schedules 20 games and one tournament; 90 quarters, if the team schedules 18 games and two tournaments; or 80 quarters if the team schedules 16 games and three tournaments.

## Stomping of Bleachers

Large numbers of fans standing on and stomping bleachers in rhythm can create a physical hazard. Stomping adds additional physical strain which can conceivably cause the bleachers to collapse. This is particularly true of temporary bleachers erected for outdoor events and rollout bleachers used in gymnasiums. It is strongly recommended to all school administrators that steps be taken to eliminate the stomping of bleachers. Schools should be aware of the possible damage to the school property and the potential physical dangers to spectators in establishing any policies in this regard.

### 2008-09 MSHSAA Basketball Dates

First Possible Practice All Classes .....	Nov. 10
First Possible Contest All Classes .....	Nov. 24
District Tournaments Class 4 & 5 .....	Feb. 21-28
District Tournaments Class 1, 2 & 3 .....	Feb. 28-Mar. 7
Class 4 and 5 Sectional Games .....	March 4
Class 4 and 5 Quarterfinal Games .....	March 7
Class 1 Sectional Games .....	March 10
Class 2 and 3 Sectional Games .....	March 11
Class 1, 2, and 3 Quarterfinal Games .....	March 14
Show-Me Showdown I .....	March 12-14
Show-Me Showdown II .....	March 19-21

# Class 4 & 5 Basketball Tournament Format Changed

After evaluating the results of the annual questionnaire and the recommendation made by the Basketball Advisory Committee the MSHSAAA Board of Directors, at its March 2008 Board Meeting, approved changing the format of the Class 4 and 5 Basketball Tournament for a two-year trial, following which the schedule would be re-evaluated. This change will expand the Class 4 and 5 State Tournament from a two-day to a three-day format. The new format will eliminate teams from competing in early morning and late evening games. Class 4 will begin the tournament on Thursday, March 12, 2009 starting at 3:30 p.m. beginning with two semifinal boys games followed by two semifinal girls games with the last game starting at 8:20 p.m. Friday will feature the Class 4 third place games starting at 12:00 p.m. followed by the boys and girls Class 5 semifinals starting at 3:30 p.m. Saturday games will again start at 12:00 p.m. with the Class 5 third place games followed by the Class 4 and Class 5 Championship games. Each day will only require one admission price to attend all games on that day. The following is a complete schedule of games for the 2009 Show-Me Showdown.

## SHOW-ME SHOWDOWN I

### Session 1: Thursday, March 12, Class 4

3:30 p.m. – Boys Semifinal  
5:10 p.m. – Boys Semifinal  
6:40 p.m. – Girls Semifinal  
8:20 p.m. – Girls Semifinal

### Session 2: Friday, March 13, Class 4 & 5

12:00 p.m. – Boys Third Place (Class 4)  
1:40 p.m. – Girls Third Place (Class 4)  
3:20 p.m. – Boys Semifinal (Class 5)  
5:00 p.m. – Boys Semifinal (Class 5)  
6:40 p.m. – Girls Semifinal (Class 5)  
8:20 p.m. – Girls Semifinal (Class 5)

### Session 3: Saturday, March 14, Class 4 & 5

12:00 p.m. – Boys Third Place (Class 5)  
1:40 p.m. – Girls Third Place (Class 5)  
3:20 p.m. – Boys Championship (TV) (Class 4)  
5:00 p.m. – Girls Championship (TV) (Class 4)  
6:40 p.m. – Girls Championship (TV) (Class 5)  
8:20 p.m. – Boys Championship (TV) (Class 5)

## SHOW-ME SHOWDOWN II

### Session 1: Thursday, March 19, Class 2

9:00 a.m. – Boys Semifinal  
10:40 a.m. – Boys Semifinal  
12:20 p.m. – Girls Semifinal  
2:00 p.m. – Girls Semifinal

### Session 2: Thursday, March 19, Class 1

4:30 p.m. – Boys Semifinal  
6:10 p.m. – Boys Semifinal  
7:50 p.m. – Girls Semifinal  
9:30 p.m. – Girls Semifinal

### Session 3: Friday, March 20, Class 2

9:00 a.m. – Boys Third Place  
10:40 a.m. – Girls Third Place  
12:20 p.m. – Boys Championship  
2:00 p.m. – Girls Championship

### Session 4: Friday, March 20, Class 3

4:30 p.m. – Boys Semifinal  
6:10 p.m. – Boys Semifinal  
7:50 p.m. – Girls Semifinal  
9:30 p.m. – Girls Semifinal

### Session 5: Saturday, March 21, Class 1

9:00 a.m. – Boys Third Place  
10:40 a.m. – Girls Third Place  
12:20 p.m. – Boys Championship  
2:00 p.m. – Girls Championship

### Session 6: Saturday, March 15, Class 3

4:30 p.m. – Boys Championship  
6:10 p.m. – Girls Championship  
7:50 p.m. – Boys Third Place  
9:30 p.m. – Girls Third Place



## Reminder on Illegal Basketball Uniforms Rule

During the 2007 MSHSAA Basketball Rules Interpretation Meetings an extensive discussion regarding legal and illegal basketball uniforms was held. Although there were no NFHS basketball rules changes in recent history regarding uniform design or style numerous schools detected that their uniforms were not legal according to the specifications set forth by the NFHS. Schools that discovered that their uniforms were illegal requested and were granted a one time exemption from the specifications of the uniform rule in the form of a letter from the MSHSAA office. All schools that asked for and received an exemption letter must continue to use the letter that was issued until the uniform has been retired from varsity competition. All schools that have

purchased illegal uniforms after the start of the 07-08 school year are not eligible for an exemption and shall be assessed the penalty for wearing illegal uniforms.

If game officials question the legality of a particular varsity uniform, they shall ask to see an exemption letter from the MSHSAA Office. If the school cannot produce an exemption letter from the MSHSAA Office, the officials are to assess the penalty for the wearing of an illegal uniform.

Rule 3-4-6-b in the 2008-09 NFHS Basketball Rule Book states that all home teams must wear white jerseys. This was a rule change that was also implemented during the 07-08 school year to only allow white jerseys to be worn as a home uniform. Schools have had a four-year notification period prior to

the 2007-08 school year.

As was the practice during the 07-08 school year designated, varsity home teams that do not have the required home white jerseys shall be issued the required technical foul penalties.

In any lower level sub-varsity game (junior varsity, sophomore, freshman, or junior high), officials shall not issue a technical foul for uniforms that are illegal based upon design, style, or color.

Any questions regarding this new interpretation should be directed to the MSHSAA Office.

An extensive power point presentation to visually assist with this discussion may be found on the NFHS web site. The address is [www.NFHS.org](http://www.NFHS.org).

# Multiple-Game Events Conducted in Missouri

The following provisions must be met in multiple-game events conducted in Missouri in the sports of basketball, soccer and football organized by a college or university, a member school(s), or a non-school entity co-sponsored by an MSHSAA member school *in order for MSHSAA member schools to participate:*

a. In all games involving MSHSAA member schools (one or both opponents), the designated host school shall be an MSHSAA member school, or the event organizer can designate an MSHSAA member school as the host of the overall event. If an MSHSAA member school is designated as the overall host of the event (i.e. initiating contracts between schools for all games, contracting all game officials and other administrative responsibilities), this overall event host school shall file a detailed financial summary of the event with the participating schools and the MSHSAA Office.

b. Game officials shall be approved by the participating schools, contracted directly by the host school administration, and registered with the MSHSAA in accord with By-Law 162.

c. All schools participating against MSHSAA member schools shall meet the provisions of 311.1-a-1. It is the responsibility of the MSHSAA member host school to confirm this status of the opposing school(s).

d. Financial reimbursement to *each* MSHSAA member school participating in the event shall be made, at a minimum, in the amount equal to the average gate each individual MSHSAA member school would have received if the game were played at the school's facility plus any mileage expense actually incurred. "Local" MSHSAA member schools need not be paid travel expenses. When a high school contest is held "in conjunction" with an intercollegiate contest(s), the institution shall not provide the high school with any financial compensation, including transportation expenses or a guarantee or percentage of the income realized from the contest.

e. The event organizer shall file a financial report with the MSHSAA office within 90 days following the event. This is the responsibility of the event organizer. When a high school contest is held "in conjunction" with an intercollegiate contest(s), a financial report is not necessary.

f. Games that involve schools from other states may have state association requirements that are beyond these listed above. It is the responsibility of the MSHSAA member host school(s) and the event organizer to insure that these rules and all those previously mentioned are met.

g. The event organizer shall insure that the multiple-game event conducted in Missouri is approved at least 90 days in advance by the MSHSAA (and the NFHS, if necessary).

**Editor's Note for d and e above:** A contest is "in conjunction" with an intercollegiate contest if the college and the high school events are conducted in the same sessions, tickets are sold as a single event, and the playing facility is not cleared between the contests. Items d and e reflect NCAA requirements."



## 2008-09 Swimming & Diving Automatic Qualifying Standards

Automatic qualifying times for the MSHSAA Girls Swimming & Diving Championships have been established for the 2008-09 season. The Swimming and Diving Advisory Committee reviews these standards annually and recommends changes as necessary (marked with asterisk). All automatic standards are rounded to the next highest 09 of a second.

<u>Girls Events</u>	<u>Yards</u>	<u>Meter</u>
200 Medley Relay	2:03.19	2:17.48
200 Freestyle	2:06.59	2:20.26
200 Individual Medley	2:23.39	2:39.16
50 Freestyle	:26.29	:29.31
100 Butterfly	1:04.79	1:11.98
100 Freestyle	:57.99	1:04.48
500y/400m Freestyle	5:40.99*	4:58.33*
200 Freestyle Relay	1:49.59	2:02.41
100 Backstroke	1:06.29	1:13.64
100 Breaststroke	1:14.19	1:22.49
400 Freestyle Relay	4:02.99	4:30.69

### One-Meter Diving Standards

- The total degree of difficulty for six dives must be 12.0 or higher.
- The qualifying points necessary for the boys and girls meets is 210.
- Per NFHS diving rules, in a six-dive meet a diver must perform a voluntary dive (assigned dd through 1.8) and five optional dives. In order to qualify for state competition only: 1) dives 101, 201, 301, 401 and 5111 may not be selected as an optional dive, and 2) the five optional dives must represent all five groups. The voluntary dive shall be selected from the voluntary group of the week according to NFHS Rule 9-4-6.
- To qualify during a championship meet requiring 11 dives, the competitor can pick six of the 11 dives by circling the dives to be used on the diving scoresheet. In order to qualify for state competition only: 1) dives 101, 201, 301, 401 and 5111 may not be selected as an optional dive, and 2) the five optional dives selected for state qualification must represent all five groups. The MSHSAA and NFHS

requirements for qualifying in a six-dive meet, including a dive from the voluntary group of the week, must be met. The competitor must complete all 11 dives.

Please note that the Board of Directors has ruled that performances that take place in pools of distances less than 25-yards or 25-meters shall not be used for state qualification.

# MAKE THE RIGHT CHOICE

*It's not really winning if you cheat.*

## Facts about Anabolic Steroids

- Possession or sale of anabolic steroids without a prescription is illegal.
- Steroid users are at greater risk for infections, including HIV and hepatitis.
- The use of steroids can result in stunted growth.
- Girls who use steroids can grow body and facial hair.
- Boys who use steroids can form breast tissue and have their testicles shrink.
- Many steroid users develop deep depression.
- Some athletes have died from use of steroids.



For more information on anabolic steroids, visit the National Federation of State High School Associations Web site at <[www.nfhs.org](http://www.nfhs.org)>.

**CHOICE ISN'T ALWAYS EASY. Young athletes make choices every day that can determine if they succeed or fail –**

**MAKE THE RIGHT CHOICE**

# Track & Field Advisory Committee Summary

Held May 29, 2008

1. Recommend that Recommendation #3 from the 2007 meeting recommendations (*Recommend that all participants in the pole vault be required to weigh-in at the district, sectional, and State meets beginning with the 2007-08 track and field season and that such weigh-ins be conducted by the head field event referee in conjunction with the pole vault verification procedure utilizing certified, calibrated scales and with each participant wearing his/her competition uniform and shoes.*) be withdrawn and to conduct a round-table discussion session at the 2008 MTCCCA Clinic with the purpose of obtaining input from pole vault coaches on participants' weigh-ins and coaches' certifications.

\*\*T

2. Recommend that an item be placed on the Annual Questionnaire to determine if schools registered for senior high track and field favor adding the 1600 meter medley relay (200 meters, 200 meters, 400 meters, 800 meters) as an official MSHSAA event beginning with the 2010 season, with the relay being conducted in lanes for the first four turns.

3. Recommend that an item be placed on the Annual Questionnaire to determine if schools registered for senior high track and field favor conducting the 800 meter run at the state



championships as two preliminary heats on Friday with a final race of eight runners on Saturday, beginning with the 2010 season.

\*\*T

4. Recommend that an item be placed on the Annual Questionnaire to determine if schools registered for senior high track and field favor scheduling all four races of the 3200 meter run at the state championships on Friday evening after the conclusion of the 4x400 meter relay preliminaries and all four races of the 1600 meter run at their normally scheduled times on Saturday, with any vacated time slots caused by such schedule changes in the order of events not closed up, beginning with the 2010 season.

5. Recommend that the jump-off tie-breaking procedure (per the NFHS Track and Field Rules Book) be applied at a sectional meet if less than four competitors clear the opening height in the high jump or pole vault.

6. Recommend that, for the purpose of sectional and state qualifications, the correction of places, scores, and advancements of qualifiers due to the disqualification of ineligible participants at the applicable district or sectional meet shall be made until 4:00 p.m. on Wednesday preceding the next level of competition, provided that the fifth-place finisher can be determined.

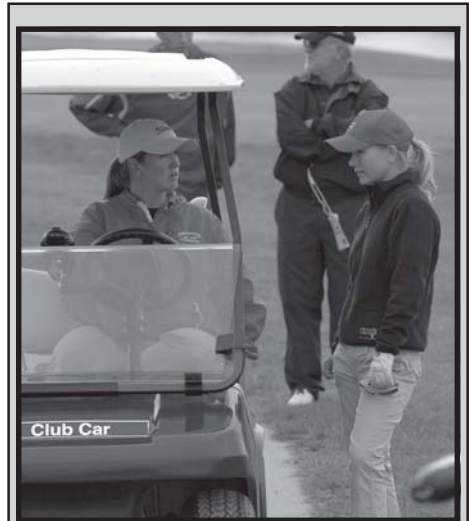
7. Recommend that the advisory committee submit a rule change proposal to the NFHS Track and Field Rules Committee permitting uniform and undergarment items to contain more than one manufacturer's logo.

8. Recommend that "The location of the check-in marking on a pole vaulting poles be located on the lower end of the pole and that the identification tape utilized be visible for the entire length of the runway" be included as a point of emphasis at the 2009 rules meetings.

9. Recommend that the following proposed sectional meet field event schedule be adopted for the 2009 season in order to minimize conflicts among events.

- 12 p.m. Girls High Jump; Girls Shot Put  
Boys Pole Vault; Boys Discus
- 1 p.m. Girls Long Jump  
Boys Triple Jump
- 2 p.m. Girls Pole Vault; Girls Discus  
Boys High Jump; Boys Shot Put
- 3 p.m. Girls Triple Jump  
Boys Long Jump

\*\* Tabled for further study  
All others approved



## 2008 Girls Golf Coaches Exam Answers

The following are the answers and rule references for the 2008 Girls Golf Coaches Test:

1. True Definition of "Line Of Putt";
2. True Definition of "Move or Moved"
3. False Rule 25-1a;
4. True Decision 14-1/3; 5. True Decision 13-2/1;
6. False Decision 33-8/16; 7. False Rule 5-3;
8. False Decision 7-2/5; 9. False Rule 5-3;
10. True Rule 12-1; 11. False Rule 13-4;
12. True Decision 10/2; 13. True Decision 6-6d/1;
14. True Decision 17/7;
15. True Definition of "Lost Ball";
16. True Decision 25/18; 17. True Decision 20/2;
18. True Rule 7-1b;
19. False Definition of "Ball in Play";
20. True Definition of "Stance";
21. True Definition of "Line of Play";
22. False Definition of "Obstructions";
23. True Definition of "Provisional Ball";
24. False Decision 15/7;
25. False Decision 20-4/1;
26. False Decision 33/1;
27. True Decision 33-2a/7;
28. False Decision 33-2a/11;
29. False Decision 13-2/20;
30. False Decision 33-1/7; 31. False Decision 3/2;
32. False Decision 9-3/1;
33. False Rule 1-3, Agreement to Waive Rules;
34. False Rule 13-4, Ball in Hazard, Prohibited Actions;
35. False Rule 15-2, Substituted Ball;
36. False Rule 18-6 Ball Moved in Measuring;
37. True Definition of Out of Bounds;
38. False Rule 22-1-b Ball Assisting Play;
39. True Rule 22-1-b-ii-b Under Penalty of one stroke;
40. False Rule 18-2-a. General.

# Avoiding Problems and Penalties in Music

Each year, there are numerous problems that develop regarding music festival entries. In order to avoid possible problems directors must be knowledgeable of MSHSAA policies, procedures, and rules. While these policies, procedures, and rules are provided to the school each year in the MSHSAA Music Manual, directors are not always as diligent as they should be to become informed. The result is often an unfortunate and unpleasant situation that could have been avoided with better preparation on the part of the directors. The following is an appropriate procedure for directors to follow which should help to prevent problems.

Early in the school year, the school administrator must complete the required eligibility roster for all music students that will be participating in competitive/evaluation music events during the academic year. The eligibility roster must be completed online through the MSHSAA website [www.mshsaa.org](http://www.mshsaa.org). This must be done prior to the first competitive/evaluative music event of the school year. List only those students that meet the eligibility requirements of MSHSAA and the school and any students who do not meet the requirements, are not eligible and cannot be listed. This procedure will be repeated at the beginning of second semester and any changes to the eligibility roster notated. This will address student eligibility for all competitive/evaluative music events for the school year including the district and state music festival. This is a separate roster from the Festival Manager Program that is used for the MSHSAA District and State Music Festivals.

In August, a packet should have been received by the school athletic administrator of MSHSAA member schools registered to participate in music activities, with instructions to forward to the music directors. This packet contained information regarding registration with the MSHSAA Festival Manager Program as well as general information about the festival manager program. The music manual is available on the MSHSAA website under the 'Music Activities' link. This will allow each music director to print and have their own copy for review at anytime. Please take the time to read it completely. If you have read the manual thoroughly previously, you should be able to go to the "Points of Emphasis" section and read it. This will include the major revisions in the manual for the current year. New wording has been underlined, areas of emphasis appear in bold text and all penalties appear in gray boxes. It is the director's responsibility to know, understand and follow the stated rules for the festival.

In order to avoid some of the most common problems, pay particular attention to the following areas:

- Entry deadline dates and late entry procedures. One problem that occurs each year is late entries. The Music Advisory Committee spent a great amount of time in May discussing this procedure. The new changes appear in the MSHSAA Music



performance time limit. Solo and small ensemble performances shall be a minimum of 3 minutes. If a performance is less than 3 minutes in length, an additional work should be chosen from the MSHSAA Prescribed Graded List to bring performance to at least 3 minutes. A penalty of "one rating lower" shall be imposed for any solo/small ensembles that performs less than 3 minutes.

- Scores. For small ensemble entries, the adjudicator must be supplied an original copy of the score of the work with each measure numbered. If a score is not published, contact the publisher and request permission to create one. Separate parts or an incomplete score will not be allowed and will result in disqualification of the entry. Exception: For string duets only, if no score of the work is available and the music publisher will not grant permission to create a score, then individual parts may be provided to the adjudicator.
- Accompaniment. Accompaniment is required if one is written for the work selected but cannot be used if the work is to be unaccompanied. Also, an individual serving as an accompanist may only accompany up to 15 performances per day at the festival.

- Supervision. As the entries at the festival are school entries, it is required that students be accompanied and supervised at the festivals by a member of the faculty or administration of the school or school district. If no faculty member is present, the school's entries will be considered disqualifications.

While these areas are not all-inclusive of possible pitfalls, they should be of help to directors to prevent many possible problems. It is imperative that directors be knowledgeable of the rules of the festival. We owe it to our students to prevent problems and teach them that rules exist for good reasons and must be followed.

Manual under Section 6-C and 6-D. Refer to article New Procedure for Late Submission of Music Entries located elsewhere in this Journal.

- Limitations on entries. An individual student may perform in up to two small vocal ensembles and two small instrumental ensembles but cannot participate in two like ensembles, two girls sextets or two trumpet trios. A student can also perform one vocal solo and multiple instrumental solos. A student could perform a flute solo and a saxophone solo but could not do a flute solo and a piccolo solo or an alto saxophone solo and a tenor saxophone solo.

- Performance time limits. Another area of which directors must be knowledgeable is the minimum

## Placement of Cheerleading Squads During Basketball Contests

Cheerleading sponsors/coaches should coordinate the placement of the cheerleading squad at basketball contests with the school athletic administrator or building principal. When possible, it is suggested that the squads should cheer along the sidelines close to the intersection of the sideline and baseline. If space does not permit, the squad should be located along the baseline but not beneath the basket or within the area of the free throw lane lines extended. In all locations the squad should be back at least three or four feet from the boundary lines.

Cheerleaders should always be aware of the actions occurring in the contest and be prepared to move as play

advances toward them. The squad should also be attentive of the movement of the game officials to be certain they do not interfere with them as they officiate the game.



## MSHSAA Review and Revision of Prescribed Graded Music List

Phase III of the MSHSAA PGML Review and Revision Project is currently underway. During the months of June and July several areas of the list were reviewed and revised. Those areas reviewed were all vocal solos, woodwind, brass and percussion solos and small ensembles and piano solos. The vocal small ensemble list will be reviewed through MCDA during this school year and updated for 2009-2010. MoASTA is currently in the middle of Phase III and establishing a timeline to collect and review the literature.

Currently the MSHSAA Office is updating and removing any selection that was not available to be physically reviewed by each committee during the summer months. The updates should be completed by November 1<sup>st</sup>. For the MSHSAA Music Festivals there will be no timing of vocal solos, woodwind, brass, percussion solos and small ensembles. Vocal ensembles, all string events and piano solos will still be timed at state. It is up to each district manager

to determine if vocal ensembles, string events and piano rooms will be timed at the district music festivals. This information should be conveyed to schools assigned to each district prior to the festival.

Once Phase III has been completed and all lists are updated the project will move to Phase IV which is the development of guidelines to submit literature for consideration to be placed on the graded music list. Until Phase III is completed no new literature will be accepted for review.

MSHSAA would like to acknowledge and thank MBA, MCDA, MoASTA and MMTA for their help and support as this project has taken 2-3 years to complete. A very special thank you to J.W. Pepper, Band Services, JPM Music and the countless other music publishers for providing a large majority of the music from the graded music list to our review committees. Their help and support in this phase of the project has been phenomenal and very much appreciated.

## New Procedure for Late Submission of Music Entries

The Music Advisory Committee recommended in May and the Board approved in June the following changes in late fees and entries for the MSHSAA District and State Music Festivals. Information regarding this change is also available in Section 6-B and Section 6-C of the MSHSAA Music Manual. The music manual is available for viewing and or printing through the MSHSAA website under the Music Activities link.

Each music district has established a Tuesday district entry deadline date. Deadline information is available through the MSHSAA Festival Manager Program and the MSHSAA website. Any director that fails to submit entry(s) or has left off entry(s) after the established Tuesday district deadline may submit these entry(s) by 4:00 p.m. on the Tuesday immediately following the Tuesday district deadline. Any school submitting entry(s) after the Tuesday district deadline shall be assessed a late fee of \$100 plus a doubling of the entry fee(s). No entry(s) shall be accepted after 4:00 p.m. on Thursday. The MSHSAA Office shall be notified before any late entry(s) are accepted. (Section 6-B)

School directors and administrators should note that changes in entries submitted are only possible as specified below.

Entry changes and additions to previously submitted entries: Entry changes and additions to previously submitted entries can be made prior to the stated district entry deadline. Once the district entry deadline has passed, entries will only be accepted as outlined above.

After the district entry deadline date has passed, changes to previously submitted entries shall be permitted as follows:

Selection changes for entries: Manager must be notified in writing by mail, e-mail, or fax.

Cancellations: Manager must be notified in writing by mail, e-mail, or fax.

Substitution of participants in small ensembles. Manager must be notified in writing by mail, e-mail, or fax.

After the district entry deadline date has passed, changes to previously submitted entries shall NOT be permitted as follows:

Adding entries. Entries not previously submitted, cannot be accepted after 4:00 p.m. on Thursday immediately following the Tuesday entry deadline.

Substituting an entry for a cancelled entry. Verbal notification of substitution in a small ensemble.

Verbal notification of selection changes.

Verbal notification of cancelled entries.

A substitution may be made in an ensemble at the district festival for participants who are ill or are unable to perform on the date of the festival provided a written statement of verification is signed by the school director and is provided to the festival manager prior to the performance. Confirmation of eligibility of the substitution must be submitted following the festival signed by the school principal. The substitute must adhere to the limitations on entries as listed in the MSHSAA Music Manual. If a substitution is made at the district level and the entry qualifies for the state festival, the entry would be required to perform at the state festival with the students that performed at district unless substitution is necessary at state.

District or state schedules may not be altered without consent of the festival manager. Penalty for the violation shall be disqualification of the entry/entries involved. Changes in the state schedule shall not be made unless a direct schedule conflict exists.

## Debate Judges Needed for State Tournament

There may be a shortage of qualified debate judges for this year's tournament. Any school able to supply an extra judge or judges should contact Fred Binggeli at the MSHSAA, (573) 875-4880 ext. 3007. Please note that schools qualifying four or more students in debate (Cross-Examination, Lincoln-Douglas, and Public Forum) for the state tournament are required to provide a second debate judge. Your assistance and cooperation will be greatly appreciated.

## Schools to Provide Timers at State Speech Tourney

Timekeepers for the MSHSAA Speech and Debate Championships will be provided by participating schools. Upon recommendation of the Speech Advisory Committee and approval of the Board of Directors, each school qualifying in Cross Examination, Lincoln-Douglas, Public Forum Debate, or any individual event, shall provide a timekeeper. Schools with qualifiers on Friday and Saturday shall be prepared to bring a timekeeper each day. The MSHSAA will select timekeepers for individual events and notify the schools of their responsibilities.

## Show-Me Academic Challenge Question Provider

The question provider for the 2009 Show-Me Academic Challenge will be Questions Galore! in Wheaton, Illinois. Should schools wish to purchase practice questions, simply contact Mr. Michael Hurley, Questions Galore! 319 South Naperville Road, Wheaton, IL 60187, email: info@questionsgalore.net.

## 2007-08 Show-Me Academic Challenge Questions Available for Purchase

The questions which were used at the 2007-08 MSHSAA Academic Competition District and State tournaments, written by Scholastic Bowl Company of Virginia, are available for purchase from the MSHSAA. The price for a set of these questions is \$80.00 plus shipping and handling. Schools that are interested in purchasing these questions must contact the MSHSAA by phone or mail (the questions are included on the MSHSAA order form).

The question provider for the 2008-09 Academic Competition district and state tournament is Questions Galore! in Wheaton, Illinois, and these questions will be available for purchase following this year's State Championships.

2009 MSHSAA District Music Festival Performance and Postmark Deadline Dates

<u>District Number</u>	<u>Site</u>	<u>Festival</u>	<u>Deadline</u>
1	Southeast Missouri State University, Cape Girardeau		
	Large groups ( <i>selected schools</i> )	Mar. 17, 2009	Feb. 17, 2009
	Large groups ( <i>all remaining schools</i> )	Mar. 18, 2009	Feb. 17, 2009
	Piano	Mar. 18, 2009	Feb. 17, 2009
2	Central H.S. (CapeGirardeau): Solos & small ensembles	Mar. 20, 2009	Feb. 17, 2009
	Three Rivers Community College:		
3	Large groups	Mar. 17, 2009	Feb. 24, 2009
	Solos & small ensembles	Mar. 28, 2009	Mar. 3, 2009
4	West Plains H.S.:		
	Large groups	Apr. 2, 2009	Mar. 3, 2009
5	Solos & small ensembles	Apr. 3, 2009	Mar. 3, 2009
	Republic H.S.: Solos & small ensembles	Apr. 3-4, 2009	Mar. 3, 2009
	Central H.S. (Springfield): Large groups ( <i>Vocal</i> )	Apr. 20-21, 2009	Mar. 3, 2009
	Willard H.S.:		
6	Large groups ( <i>Orchestra</i> )	Apr. 21, 2009	Mar. 3, 2009
	Large groups ( <i>Band</i> )	Apr. 22-23, 2009	Mar. 3, 2009
7	Springfield: Solos & small ensembles - Site TBA	Apr. 4, 2009	Mar. 3, 2009
8	Missouri Southern State University:		
	Large groups ( <i>Large bands</i> )	Mar. 24, 2009	Mar. 3, 2009
	Large groups ( <i>Small bands</i> )	Mar. 25, 2009	Mar. 3, 2009
	Large groups ( <i>Vocal</i> )	Mar. 26, 2009	Mar. 3, 2009
	Solos & small ensembles ( <i>Instrumental</i> )	Apr. 3, 2009	Mar. 3, 2009
9	Solos & small ensembles ( <i>Vocal</i> )	Apr. 4, 2009	Mar. 3, 2009
	Stockton H.S.:		
	Solos & small ensembles	Mar. 28, 2009	Feb. 24, 2009
	Boilivar H.S.:		
10	Large groups ( <i>Instrumental</i> )	April 3, 2009	Feb. 24, 2009
	Large groups ( <i>Vocal</i> )	April 4, 2009	Feb. 24, 2009
11	Lebanon H.S.: Solos & small ensembles	Mar. 28, 2009	Feb. 24, 2009
	Camdenton H.S.:		
	Large groups ( <i>Instrumental</i> )	Apr. 3, 2009	Feb. 24, 2009
	Large groups ( <i>Vocal</i> )	Apr. 4, 2009	Feb. 24, 2009
12	East Central College:		
	Piano	Mar. 26, 2009	Feb. 17, 2009
	Large groups	Mar. 27, 2009	Feb. 17, 2009
	Solos & small ensembles ( <i>Strings &amp; Percussion</i> )	Mar. 27, 2009	Feb. 17, 2009
13	Solos & small ensembles ( <i>Vocal WW, &amp; BR</i> )	Mar. 28, 2009	Feb. 17, 2009
	Jefferson College:		
	Large groups ( <i>Vocal</i> )	Mar. 26, 2009	Feb. 24, 2009
	Large groups ( <i>Instrumental</i> )	Mar. 26-27, 2009	Feb. 24, 2009
14	Solos and Small Ensembles	Mar. 28, 2009	Feb. 24, 2009
	St. Louis:		
	Band - Site TBA	Mar. 3-4, 2009	Jan. 27, 2009
	Solos & small ensembles - Site TBA	Mar. 6-7, 2009	Feb. 3, 2009
15	Choir - Site TBA	Mar. 10-11, 2009	Jan. 27, 2009
	Orchestra - Site TBA	Mar. 11-12, 2009	Jan. 27, 2009
	Warren County HS:		
	Large groups	Apr. 3-4, 2009	Feb. 24, 2009
16	Solos & small ensembles	Mar. 7, 2009	Feb. 24, 2009
	Jefferson City H.S.:		
	Piano	Apr. 2, 2009	Feb. 10, 2009
	Large Groups ( <i>Instrumental</i> )	Apr. 3, 2009	Feb. 10, 2009
17	Solos & small ensembles ( <i>Strings</i> )	Apr. 3, 2009	Feb. 10, 2009
	Solos & small ensembles ( <i>Vocal, WW, BR &amp; Per</i> )	Apr. 4, 2009	Feb. 10, 2009
	Large Groups ( <i>Vocal</i> )	Apr. 4, 2009	Feb. 10, 2009
	Smith-Cotton H.S.:		
18	Solos & small ensembles ( <i>Vocal, WW, BR - selected schools</i> )	Apr. 3, 2009	Feb. 17, 2009
	Solos & small ensembles	April 4, 2009	Feb. 17, 2009
	Boonville H.S.:		
	Large groups ( <i>Vocal</i> )	Mar. 19-20, 2009	Feb. 10, 2009
19	Large groups ( <i>Bands &amp; Orchestras</i> )	Mar. 23-24, 2009	Feb. 10, 2009
	Pleasant Hill H.S.:		
	Large groups ( <i>Instrumental</i> )	Mar. 26-27, 2009	Feb. 17, 2009
	Large groups ( <i>Vocal</i> )	Mar. 28, 2009	Feb. 17, 2009
20	Solos & small ensembles: ( <i>All Class 1 schools &amp; Cass County schools</i> )	Apr. 3, 2009	Mar. 3, 2009
	Solos & small ensembles: ( <i>Class 2,3,4 schools in Jackson &amp; Bates counties</i> )	Apr. 4, 2009	Mar. 3, 2009
	Solos & small ensembles: ( <i>All classes, all schools piano &amp; string events</i> )	Apr. 4, 2009	Mar. 3, 2009
	Lee's Summit West H.S.:		
21	Solos & small ensembles ( <i>Vocal</i> )	Mar. 6, 2009	Feb. 17, 2009
	Solos, small ensembles including piano ( <i>Instrumental</i> )	Mar. 7, 2009	Feb. 17, 2009
	Large Groups ( <i>2nd Bands</i> )	Apr. 1, 2009	Mar. 3, 2009
	Large Groups ( <i>All Orchestras String &amp; Full</i> )	Apr. 2, 2009	Mar. 3, 2009
22	Large Groups ( <i>1st Bands</i> )	Apr. 3, 2009	Mar. 3, 2009
	Large Groups ( <i>Vocal</i> )	Apr. 4, 2009	Mar. 3, 2009
	Liberty H.S.:		
	Solos & small ensembles ( <i>Vocal</i> )	Mar. 27, 2009	Feb. 17, 2009
23	Solos & small ensembles ( <i>Instrumental</i> )	Mar. 28, 2009	Feb. 17, 2009
	Park Hill H.S.:		
	Bands ( <i>Class 1,2 and all 2nd bands</i> )	Apr. 2, 2009	Feb. 24, 2009
	Orchestra	Apr. 2, 2009	Feb. 24, 2009
24	Bands ( <i>Class 3,4,5</i> )	Apr. 3, 2009	Feb. 24, 2009
	Woodwind & brass choirs	Apr. 3, 2009	Feb. 24, 2009
	Choirs	Apr. 4, 2009	Feb. 24, 2009
	Chamber Choirs	Apr. 4, 2009	Feb. 24, 2009
25	Mexico H.S.:		
	Solos & small ensembles ( <i>Class 1,2,3</i> )	Apr. 3, 2009	Mar. 3, 2009
	Large groups ( <i>Class 4,5</i> )	Apr. 3, 2009	Mar. 3, 2009
	Large groups ( <i>Class 1,2,3</i> )	Apr. 4, 2009	Mar. 3, 2009
26	Solos & small ensembles ( <i>Class 4,5</i> )	Apr. 4, 2009	Mar. 3, 2009
	Kirksville H.S.: Solos & small ensembles	Apr. 3-4, 2009	Feb. 10, 2009
	Hannibal-LaGrange College:		
	Vocal large groups	Mar. 27, 2009	Feb. 24, 2009
27	Inst. large groups	Mar. 28, 2009	Feb. 24, 2009
	Central (St. Joseph):		
	Solos & small ensembles ( <i>Schools in Andrew, Buchanan, DeKalb &amp; Clinton counties</i> )	Mar. 27, 2009	Feb. 17, 2009
	Solos & small ensembles ( <i>Schools in Atchison, Caldwell, Daviess, Gentry, Grundy, Harrison, Holt, Livingston, Mercer, Nodaway &amp; Worth counties</i> )	Mar. 28, 2009	Feb. 17, 2009
28	Solos & small ensembles ( <i>All schools all classes piano &amp; string events</i> )	Mar. 28, 2009	Feb. 17, 2009
	Northwest Missouri State University:		
	Instrumental large groups ( <i>Class 3,4,5</i> )	Apr. 2, 2009	Feb. 24, 2009
	Instrumental large groups ( <i>Class 1,2</i> )	Apr. 3, 2009	Feb. 24, 2009
29	Vocal large groups ( <i>Class 1,2</i> )	Apr. 3, 2009	Feb. 24, 2009
	Vocal large groups ( <i>Class 3,4,5</i> )	Apr. 4, 2009	Feb. 24, 2009

MSHSAA State Music Festival  
April 30-May 2, University of Missouri-Columbia campus.

# Speech & Debate District Information

## #1 Central District

UNIV. OF CENTRAL MISSOURI and STATE FAIR COMMUNITY COLLEGE:  
Ms. Katie Johnson, Manager, Cole Camp High School, 500 South Keeny, Cole Camp, MO 65325. (660) 668-3751 ext. 304, (FAX) (660) 668-4703.

- DATES: March 3 Cross-Examination, Lincoln-Douglas and Public Forum  
March 6 One-Act Play and Readers Theatre  
March 7 Individual Events

All entries must be postmarked on or before February 3, 2009.

*Assignments:* Schools located in the counties of Bates, Benton, Cooper, Henry, Hickory, Johnson, Lafayette, Moniteau, Morgan, Pettis, Saline and St. Clair.

## #2 Northeast District

ROCKBRIDGE HIGH SCHOOL:  
Stacey Bonderer, Manager, Rock Bridge High School, 4303 South Providence, Columbia, MO 65203. (573) 214-3133, FAX: (573) 214-3109  
DATES: March 12 Cross-Examination, Lincoln-Douglas and Public Forum  
March 13 One-Act Play and Readers Theatre  
March 14 Individual Events

All entries must be postmarked on or before February 12, 2009.

*Assignments:* Schools located in the counties of Adair, Audrain, Boone, Callaway, Chariton, Clark, Howard, Knox, Lewis, Lincoln, Linn, Macon, Marion, Monroe, Montgomery, Pike, Putnam, Randolph, Schuyler, Scotland, Shelby, Sullivan and Warren.

## #3 Northwest District

OAK PARK HIGH SCHOOL:  
Mr. Don Crabtree, Manager, 1909 6th Avenue, St. Joseph, MO 64505. (816) 279-7025  
DATES: March 19 One-Act Play  
March 20 Individual Events, One-Act Play and Readers Theatre  
March 21 Cross-Examination, Lincoln-Douglas and Public Forum

All entries must be postmarked on or before February 19, 2009.

*Assignments:* Schools located in the counties of Andrew, Atchison, Buchanan, Caldwell, Carroll, Clay, Clinton, Davies, DeKalb, Gentry, Grundy, Harrison, Holt, Livingston, Mercer, Nodaway, Platte, Ray and Worth.

## #4 Saint Louis District

CLAYTON HIGH SCHOOL:  
Megan McCorkle, Manager, Ladue Horton Watkins High School, 1201 South Warson Road, St. Louis, MO 63124. (314) 420-7963, FAX: (314) 994-1467.  
DATES: March 13 Cross-Examination, Lincoln-Douglas, Public Forum and One-Act Play  
March 14 Readers, Individual Events, Cross-Examination, Public Forum, Lincoln-Douglas

All entries must be postmarked on or before February 13, 2009.

*Assignments:* Schools located in the counties of St. Charles, St. Louis, the City of St. Louis and Jefferson City High School.

## #5 Southern District

CARTHAGE HIGH SCHOOL:  
David Watkins and Bryan Whyte, Co-managers, Neosho High School, 511 Neosho Blvd., Neosho, MO 64850. (417) 451-8670, FAX: (417) 451-8605.  
DATES: March 3 One-Act Play Prelims, Readers Theatre  
March 6 One-Act Play Finals, Individual Events  
March 7 Cross-Examination, Lincoln-Douglas and Public Forum

All entries must be postmarked on or before February 3, 2009.

*Assignments:* Schools located in the counties of Barry, Barton, Cedar, Dade, Jasper, Lawrence, McDonald, Newton and Vernon

## #6 South Central District

CAMDENTON HIGH SCHOOL:  
Tom Martin, Manager, Camdenton High School, P.O. Box 1409, Camdenton, MO 65020. (573) 346-5651 Ext. 102, FAX: (573) 346-9238.  
DATES: March 6 Cross-Examination, Lincoln-Douglas, One Act Play and Readers Theatre  
March 7 Individual Events, Public Forum

All entries must be postmarked on or before February 6, 2009.

*Assignments:* Schools located in the counties of Camden, Cole (except Jefferson City High School), Crawford, Dent, Franklin, Gasconade, Howell, Maries, Miller, Oregon, Osage, Phelps, Pulaski, Shannon, Texas, Washington and Viburnum High School.

## #7 Southeast District

SOUTHEAST MISSOURI STATE UNIVERSITY:  
Karen Kight, Manager, Dept of Communications MS2750, SEMSU, One University Plaza, Cape Girardeau, MO 63702. (573) 986-2519, FAX: (573) 651-5967.  
DATES: March 6 Cross-Examination, Lincoln-Douglas, Public Forum, One-Act Play and Readers Theatre  
March 7 Individual Events

All entries must be postmarked on or before February 6, 2009.

*Assignments:* Schools located in the counties of Bollinger, Butler, Cape Girardeau, Carter, Dunklin, Iron (except Viburnum High School), Jefferson, Madison, Mississippi, New Madrid, Pemiscot, Perry, Reynolds, Ripley, Scott, St. Francois, Ste. Genevieve, Stoddard and Wayne.

## #8 Southwest District

MISSOURI STATE UNIVERSITY:  
Carol Maples and Teresa Sparkman, Co-managers, Kickapoo High School, 3710 S. Jefferson, Springfield, MO 65807. (417) 523-9132, FAX: (417) 523-8596.  
DATES: March 6 One-Act Play, Readers Theatre and Individual Events  
March 7 Cross-Examination, Lincoln-Douglas and Public Forum.

All entries must be postmarked on or before February 6, 2009.

*Assignments:* Schools located in the counties of Christian, Dallas, Douglas, Greene, Laclede, Ozark, Polk, Stone, Taney, Webster and Wright.

## #9 West Central District

GRANDVIEW HIGH SCHOOL: Kenny Yunker, Grandview High School, 2300 High Grove Rd., Grandview, MO 64030. (816) 316-5800 ext. 5836, FAX: (816) 316-5898.  
DATES: March 20 Cross-Examination, Lincoln-Douglas, Public Forum and One-Act Play  
March 21 Individual Events and Readers Theatre

All entries must be postmarked on or before February 20, 2009.

*Assignments:* Schools located in the counties of Cass and Jackson.

### Late Penalty Fees Assessed for District and State Speech

Schools submitting entries postmarked after the specified deadline date for the district and state level events in speech shall be assessed a late entry penalty fee of \$50.00. To avoid being assessed the penalty, directors should be certain to submit their district and state entries by the appropriate deadlines.

### Speech Season Ends April 1

According to By-Law 540, member schools participating in speech and debate are to end their seasons by April 1, and only those individuals who have qualified for the Speech & Debate Championships may continue beyond the official close of the speech season. Speech and debate coaches should refer to the 2007-08 MSHSAA Handbook, By-Law 540, which indicates the season limits for interscholastic speech programs. The by-law provides that "no interscholastic debate, dramatics, or speech events shall be held before the second Friday in October or after April 1."

# MSHSAA Music Adjudicator Training Session

The MSHSAA will sponsor one music adjudicator training sessions this school year. It will be held at the MMEA Conference on Wednesday, January 28. If you would like to register for this session, simply complete the registration form below and return it to the MSHSAA. This program was developed by the MSHSAA Adjudicator Training Committee. The committee, which included music educators and experienced music adjudicators, was appointed by the MSHSAA Board of Directors as a result of a recommendation by the MSHSAA Music Advisory Committee. The main reason for embarking on the program was to bring about improved consistency among adjudicators statewide.

The specific objectives of the program as identified by the committee are:

- To make the adjudication process a constructive and educational experience for all participants in the MSHSAA Evaluative Music Festivals.
- To establish a consistent evaluation process by adjudicators at all MSHSAA Music Festivals.
- To establish an ongoing system of certification for music adjudicators.
- To establish an ongoing system of evaluation for music adjudicators.

This session is open to any music educator at no charge. In order to be certified to judge at the MSHSAA festivals, it is a requirement that the attendees have 10 years of teaching experience. Music educator's with less than ten years teaching experience are welcome to attend and would likely find the session beneficial. Again, to register, simply complete and return the registration form below.

## MSHSAA Music Adjudicator Training Pre-Registration Form

Name: \_\_\_\_\_

Check One: ( ) Instrumental ( ) Vocal

Address: \_\_\_\_\_

City/State: \_\_\_\_\_

Zip: \_\_\_\_\_

Home Phone: \_\_\_\_\_

Business Phone: \_\_\_\_\_

Email Address: \_\_\_\_\_

I would like to attend the music adjudicator training session listed below: \_\_\_\_\_

January 28, 2008 (Wed.) - MMEA at Tan-Tar-A (12 p.m. to 5 p.m.) -  
(Registration deadline - January 16, 2008)

Return Completed Form  
(duplicate as necessary) to:

Davine Davis  
c/o MSHSAA  
P.O. BOX 1328  
Columbia, MO 65205-1328  
Fax (573) 875-1450



## 2008 Softball Part II Exam Answers

The following are the answers and rule references for the 2008 Part II Softball Exam, as supplied to the MSHSAA by the National Federation:

1. True 2-3-2 Note; 2. True 8-3-11;
3. True 8-3-2 Exc; 4. True 8-3-4;
5. True 8-4-3b Pen; 6. True 8-6-10d;
7. True 8-6-11; 8. True 8-6-15 Pen;
9. False 8-8-1; 10. False 8-8-16; 2-1-1;
11. True 8-8-17; 12. True 8-8-6;
13. False 2-63-1; 8-1-1c; 14. False 7-1-1;
15. True 7-2-2 Eff; 16. True 7-3-1;
17. True 7-3-1 Pen; 18. True 7-4-13;
19. True 7-4-14; 20. True 7-4-4 Pen.
21. True 7-4-8; 22. False 2-15; 3-6-6;
23. False 3-6-1 Pen; 24. True 3-6-10;
25. False 3-6-15; 26. False 3-6-16 Pen;
27. True 3-6-18; 28. False 3-6-19;
29. True 3-6-2 Pen; 30. False 3-6-20;
31. False 3-6-4; 32. True 3-6-5;
33. True 3-6-6 Note; 34. True 3-5-1;
35. False 3-5-3; 36. True 3-5-3 Pen;
37. True 3-5-5 Pen; 38. True 8-9 Pen;
39. False 8-9-1; 40. True 8-9-1.
41. True 8-9-2; 42. True 8-9-4 Exc;
43. False 8-9-5; 44. True 8-9-6 Exc(2);
45. True 8-9-7; 46. False 2-1;
47. False 2-15; 48. True 2-16;
49. False 2-2-2; 50. True 2-32-1;
51. True 2-33; 52. True 2-45;

53. False 2-46; 54. True 2-52-2b;
55. True. 2-61; 56. False 2-9-4;
57. True 1-1-11; 58. False 1-1-2b;
59. False 1-1-6; 2-5-3; 60. True 1-1-7.
61. True 1-2-1; 62. True 1-3-3;
63. True 1-3-5; 64. False 1-3-6;
65. True 1-4-1; 66. False 1-4-4;
67. False 1-5-4; 68. True 1-6-7;
69. False 6-1-1; 70. True 6-1-1a;
71. True 6-1-1b; 72. True 6-1-1f(3);
73. True 6-1-2c; 74. False 6-1-4c;
75. True 6-1-4d; 76. True 6-1-4d;

77. False 6-1-4e; 78. False 6-2-2;
79. False 3-2-11; 80. False 3-2-12.
81. True 3-2-13; 82. True 3-2-14;
83. False 3-2-7; 84. True 3-2-9;
85. True 3-3-1; 86. False 3-3-2;
87. True 3-3-2; 88. True 3-3-2;
89. True 3-3-2 Note; 90. False 3-3-5;
91. True 3-3-9; 92. False 3-6-7 Pen;
93. True 10-1-1; 94. False 10-1-2;
95. True 10-1-2; 96. False 10-2-3j;
97. True 10-2-3m; 98. True 10-3-1;
99. True 10-4-2; 100. True 10-4-2.



## 2008 Football Part II Exam Answers

The following are the answers and rule references for the 2008 Part II Football Exam, as supplied to the MSHSAA by the National Federation:

1. True 1-2-3a; 2. True POE (MRSA);
3. True 9-9-3 Penalty; 4. False 4-2-3;
5. True 1-5-2b Note; 6. False 1-5-1h;
7. True POE (False Starts, Shifts and Motion);
8. True 1-5-1b, d, h; 9. False 2-16-4; 4-2;
10. False 2-31-6; 4-2-2c; 7-4-3;
11. True 4-2-2i; 8-3-2b; 12. False 2-32-11;
13. True 2-7-1; 4-2-2; 14. True 2-41-7;
15. False 2-23; 16. True 2-33-1c;
17. False 2-44; 18. True 2-19-1;
19. True 7-1-8; 20. False 7-1-5;
21. False 1-2-4; 22. True 1-3-1g;
23. True 1-5-1d, e; 24. False 4-2-2k;
25. False 1-5-1h; 26. False 1-5-1i;
27. True 1-5-4; 28. False 1-4-3;
29. True 3-3-3b; 30. False 3-3-3a; 3-3-4b1;
31. False 3-3-3a; 3-3-4b2; 32. True 3-3-6;
33. False 6-5-6; 34. False 6-5-1;
35. True 2-9-3; 36. True 6-5-1;
37. True 6-5-1; 38. False 8-4-1a;
39. True 8-4-1b; 40. True 8-4-2;
41. False 7-4-3; 42. True 2-32-11;
43. True 2-31-6; 44. False 2-31-2 Note;
45. False 2-17-3; 46. False 7-1-7; 7-2-6, 7;
47. True 9-4-3h; 48. True 9-2-3c;
49. True 7-1-4; 10-1-2; 50. False 2-20-1c; 9-4-3i;

51. False 7-3-2; 52. True 6-1-1;
53. True 6-1-9; 54. True 6-1-5;
55. False Fund X-6; 7-5-10 Penalty;
56. True Fund X-2; 57. False Fund VII-1; 7-5-6d;
58. False Fund IV-1; 2-24-2; 59. False 3-7-4;
60. True 9-6-4e; 61. False 9-6-4c; 62. True 9-6-4f;
63. False 4-2-3b; 64. True 3-3-3c;
65. True 1-1-11; 66. False 3-5-10b;
67. True 9-4-6 Penalty; 68. False 10-4-2b;
69. True 9-8 Penalty; 70. True 7-2-5c Penalty;
71. False 1-4-1; 10-1-1; 72. True 9-6-1 Penalty;
73. False 10-2-5; 10-4-5; 74. False 6-5-6 Penalty;

75. True 10-2-1; 76. True 10-2-6;
77. True 3-1-3; 78. False 3-2-4; 79. False 3-1-1;
80. False 3-3-2; 81. False 8-1 Table; 8-3-3;
82. True 8-5-3d; 83. False 8-5-3d; 84. True 8-5-2c;
85. True 3-5-7i; 86. True 3-4-4f;
87. False 3-5-1; 88. False 3-5-1;
89. True 3-5-9; 90. True 3-4-3b, c;
91. False 3-5-7m; 92. True 3-4-1a;
93. True 8-5-3c; 94. False 2-13-2; 8-2-1b; Fund I-8;
95. False 8-5-2b; 96. True 6-3-1a; 8-5-3a1;
97. True 4-2-2h; 8-2-1a; 98. True 8-2-1a;
99. False 8-5-3c; 100. False 8-1 Table.



## 2008-09 Soccer Part II Exam Answers

The following are the answers and rule references for the 2008-09 Part II Soccer Exam, as supplied to the MSHSAA by the National Federation:

1. False 1-1-1; 2. False 1-2-10; Diag.;
3. False 1-2-6; 4. True 1-3-3;
5. False 1-4-1; 6. False 1-4-1;
7. True 1-4-1; 5-4-1-b; 8. True 1-4-1; 5-4-1-b;
9. False 1-6; 10. True 1-7;
11. False 3-1-2, Exception; 12. True 3-1-3;
13. True 3-3-1-b; 14. False 3-3-2-b-2;
15. False 3-3-2-d-1; 16. True 3-3-2-e-2;
17. False 3-4-1-d; 18. False 3-6-1;
19. True 3-6-1; 20. True 4-1-1.
21. False 4-1-1; 22. False 4-1-1;
23. True 4-1-1-c; 24. True 4-1-1-c;
25. True 4-1-1-g; 26. True 4-1-1-j-1;
27. False 4-2-1-g; 28. False 4-2-8;
29. False 4-3; 30. False 4-3; Definition s;
31. False 4-3; Definition r; 32. False 5-1-2;
33. False 5-1-2; 34. True 5-3-1-b;
35. False 5-3-1-b; Signal Chart; 36. True 5-3-1-d;
37. False 5-4-1-b; 38. False 6-2-1;
39. True 6-2-3-g; 40. False 7-1-4.
41. True 7-2-1; 42. False 7-3-1;
43. False 7-3-2; 44. True 7-5-1;
45. False PR 7.1.3, Sit. A; 46. False 8-1-3;
47. False 9-1-1; 48. False 9-1-1-e;
49. False 9-1-2-c; 50. False 9-2-3;
51. True 9-2-4; 18-1-j; 52. True 10-1-3;

53. False 10-1-3; 54. False 10-1-3-c;
55. False 11-1-1-a; 56. False 11-1-1b;
57. False 11-1-2; 58. True 11-1-3; Diag. #5;
59. True 11-1-3; PR 11.1.2, Sit. C;
60. True 11-1-3-b; Diag. #10.
61. True 12-1-2; 62. True 12-3; 63. False 12-4-2;
64. True 12-4-4; 65. False 12-7-1; 66. True 12-7-1;
67. True 12-7-3; 68. False 12-7-4;
69. False 12-8-1-e; 70. False 12-8-1-f-2, 5; 13-3-1;
71. True 12-8-1-f-8; 13-1-2; 72. False 12-8-2;
73. False 12-8-2-b; 13-1-2; 74. True 12-8-3; 13-1-2;
75. True 12-8-3-b; 76. True 12-8-3-d Penalty;
77. True 12-8-3-g; 78. True PR 12.6.1, Sit. A;
79. True PR 12.7.1, Situation;
80. True PR 12.8.1, Situation; 13-1-2.
81. True PR 12.8.3, Sit. F;
82. True 13-1-3;
83. False 13-2-1-f;
84. False 13-3-1 Penalty;
85. False 13-3-2; 18-1-1-n;  
PR 13.3.1 Sit. A;
86. False 13-3-3;
87. False 14-1-3 Penalty;  
PK Situations;
88. True 14-1-5;
89. True 15-1-1; 9-1-1; 9-1-2-b;
90. True 15-1-3;  
15-1-3 Penalty;  
PR 15.1.3 Sit.;
91. False 15-1-5;

92. False PR 15.1.3, Situation;
93. True 16-1-1; 9-1-2-b;
94. False 16-1-3; 13-1-2;
95. True 16-1-3; PR 16.1.3, Situation; 12-8-1-f-2;
96. False 17-1-3; 97. False 17-1-3;
98. False 17-1-5; 13-3-3;
99. True 17-1-5; 18-1-1-m;
100. True Signal Chart.



## 2008-09 Volleyball Part II Exam Answers

The following are the answers and rule references for the Part II Volleyball Exam as supplied to the MSHSAA by the National Federation. Please note that several of these questions will not be graded by MSHSAA due to a variety of factors including accuracy.

1. True 2-3-1e; 2. False 2-3-1h; 3. False 2-3-1g;
4. True 2-2-2; 5. True 2-1-4 Note; 6. True 4-2-1d;
7. False 3-2-3; 8. False 3-2-1; 9. False 5-1-3;
10. True 5-4-1d; 11. True 8-1-4; 12. False 5-6-2;
13. True 5-4-3b; 14. True 5-4-3a;
15. False 5-4-3b, 1 & 11; 16. True 5-4-3b (18);
17. True 6-3-2, 7-1-2; 18. False 9-4-5;
19. False 10-4-1f, 10-4-5a, 9-4 Pen 1;
20. False 6-4-1a,b; 21. False 5-6-3a;
22. True 5-5-3g; 23. False 5-5-3e; 24. True 5-5-3n;
25. True 10-4-5, 10-4 Pen 1; 26. False 10-4-1e;
27. False 10-4-6a; 28. False 10-4-1a, 10-4-4a(2);
29. True 6-3-2c, 10-4-4b; 30. False 6-3-2d, 10-4-4c;
31. False 10-4-1a; 32. False 9-5-6c;
33. True 9-5-1c, 9-5-1c(3); 34. True 9-5-4, 9-5-5b(1);
35. True 9-5-1c; 36. True 9-4-8b;
37. False 9-4-5; 38. True 9-5-1c 2 Note;
39. True 9-5-4; 40. False 9-6-7b; 41. True 9-6-1;
42. True 9-5-7; 43. True 9-4-6b; 44. True 9-5-8;
45. True 9-4-8a; 46. False 9-8-1a; 47. False 9-5-c1;
48. True 12-Pen 1b; 49. True 9-5-6a;
50. True 9-6-7a; 51. True 9-5-7;
52. False 9-5-2; 9-5-3; 53. True 4-2, Pen 4;

54. False 10-4-1e, 10-Pen 1; 55. True 9-6-7d(1);
56. True 8-2-5b; 57. False 10-4 Pen 1;
58. False 5-7-3; 59. False 10-3-7c(3);
60. True 10-4-5, 10 Pen. 61. False 2-1-7;
62. False 10-3-3; 63. True 10-4-4b;
64. False 10-4-4b; 65. True 11-5; 66. False 11-3-1;
67. True 11-3-1;
68. False 11-2-1;
69. True 12-3;
70. True 12-2,  
Procedure 11;
71. True 1-8;
72. True 12-2-7b;
73. True 9-1-2 note;
74. False 5-3-4d;
75. True 12-2-9b, Pen 1c;
76. False 4-1-6a;
77. False 12-2-5, 12-2-6;
78. False 9-5-1c; 9-5-5a;
79. False 12-2-7;
80. True 11-2-3;
81. False 7-1-4;
82. True 8-2-6,  
Official's Signal #6;
83. False 8-2-5f;
84. True  
Official's Signal #17;
85. False 5-2-1;
86. True 5-4-2b;
87. False 4-2-10;

88. True 6-3-2e; 89. True 7-1-2; 90. False 5-6-3;
91. True 5-3-3c (22); 12-2-4; 92. False 5-5-1b; 7-1-1b;
93. False 12-2-5, 12-2-6; 94. False 5-7-3;
95. False 10-1-4; 96. False 1-6-4; 97. True 9-8-1f;
98. True 9-6-6; 99. True 9-4-6b; 100. False 4-1-5.



## Note to Winter Sports Officials

Unsafe acts and rough play cannot be tolerated by those responsible for the contests. Coaches and officials must act decisively to eliminate, to the greatest extent possible, threats to the welfare of athletes. Injuries may occur regardless of such efforts. However, vigilance is absolutely required to eliminate unsafe acts and rough play. Players must be made aware of unsafe techniques and refrain from their use. Those responsible for the administration of interscholastic sports need to exercise leadership and active supervision of the player safety aspects of the contest. Officials must recognize and coaches must teach that actions or rough play that are acceptable at the professional or major collegiate level may not be safe or legal in interscholastic contests.

When an athlete is on the ground or the floor because of an injury, officials should permit team attendants to work on the athlete. Often teams have skilled trainers or even medical personnel on hand to examine and treat athlete's injuries. The officials' job is to allow careful examination and not to rush any athlete off the playing surface, particularly if a head, neck, or back injury is evident. Officials should hold up the contest for as long as necessary to safely remove a grounded athlete.

Each event has a flow or rhythm to it and as an official you would be wise to promote that flow rather

than disrupt it. It may take time before young or inexperienced officials learn the elements of this pacing, and apparently some officials never do sense it, but once you understand this subtle concept you will find yourself in tune with the sport. The good officials pick up on such elusive qualities which leads to advancement. At upper levels of officiating, where judgment and physical skill have been meticulously refined, often this undefinable quality separates those who make it to post season and championship assignments from those who never quite reach it.

Some rules have more game-to-game impact than others. For example, the "equipment and court/mat specifications" rule, often near the front of the rules book, is not necessarily one you should memorize first. While important, it is not the most important for someone who is trying to learn the rules. Ask yourself, what's more important: a basketball player's legal-guarding position or the radius of the jump-ball circle? In all sports, read the NFHS rule book in the following order: 1) Definitions. Mastering the definitions not only helps you on the mat or court, it helps you study the rest of the rule book. 2) Live and dead periods that determine whether the clock is running or stopped. 3) Other contest specific chapters, such as out-of-bounds and starting positions. 4) Fouls and penalties. 5) Violations and cautions and their penalties.

6) Scoring and timing regulations. 7) Participation and substitution regulations. 8) Officials and their duties. 9) Court/mat and equipment. 10) Rule changes and points of emphasis.

Arguments are sometimes a part of officiating and that is not necessarily bad if both parties remain professional. However, it is important that an official differentiate between argumentativeness and verbal aggression. The former involves attacking the issues (the preferred method), while in the latter, the person is attacked. The official's goal should be to turn a potential argument into a discussion of facts. To gauge how argumentative you are I will present a statement in each issue for you to consider in relation to your experiences as an official: "I consider an argument an exciting intellectual challenge." This statement may also serve as a topic for discussion at your local officials association meetings.

Best wishes in your officiating pursuits and remember when you are officiating a contest you haven't got time to think about what you should be doing. That has to be automatic and instinctive. As an official you need any edge you can get and the only way to get that edge is through your pre-season preparation which has to be thorough and complete.

Have a great season!

## Officials Duties on Filing Special Reports

It is the duty of all officials to report to the MSHSAA and the school administrators within 48 hours any unsportsmanlike conduct on the part of coaches, players and fans. Special Reports are now filed on the MSHSAA Web Site. The old paper forms will not be accepted and should be destroyed. Officials not meeting this requirement will not be permitted to register for the following school year.

The great majority of school administrators consider the special report form filed by officials for unsportsmanlike conduct a helpful means for both providing for better sportsmanship and enhancing the educational values of interscholastic activities. Most principals acknowledge that there is sufficient reason when an unsportsmanlike penalty is assessed and take immediate action to make certain that there is no repetition.

Whether or not sufficient attention is given by the school administrator and whether the action of the school is satisfactory can often be judged by whether or not a school receives more than one special report. If there are repetitions of the unsportsmanlike conduct of players, it is quite evident that the coach is not teaching and instilling in his athletes proper sportsmanship attitudes and ideals. It is the responsibility of the principal to see that the coach assumes this responsibility and he or she should set conditions for both the coach and the squad when it appears that the proper sportsmanship attitudes and ideas are not being

taught. Any athlete or coach receiving a second report for the same violation needs to be more severely dealt with the second time as the steps taken the first time evidently did not prevent a recurrence of the initial concern.

Unless proper attention is given to improving the educational and recreational values of interscholastic activities, overemphasis on winning will result to the detriment of these programs. Proper use of the special report procedure will help give attention to educational values and make these activities more recreational.

When an act of unsportsmanlike conduct occurs that is penalized by an official and a special report is not filed online within 48 hours, the school administration, after 72 hours should file a special report online on the official reporting the MSHSAA the failure of the official to file the required report. The MSHSAA will then follow-up with the official as to why a report was not filed. Officials failing to file required special reports shall be prohibited from renewing their registration for the following school year.

All coaches and officials are asked to file at least one complimentary report each season as everyone likes to be complimented on a job well done.

## Selection of District Basketball Tourney Officials

A mandatory district official's selection draft shall be conducted by the state's basketball district managers between January 31 and February 7, 2009 at predetermined sites. District managers are required to attend the selection meeting located in their area to select officials for each day of their tournament.

Each official who desires to work district tournaments shall submit an application to the MSHSAA by November 29, 2008 indicating their date of availability and their area preference for the district tournament selection process. Any official chosen by two or more district managers from the selection meetings for the same date must honor the selection from his/her area of preference. An official may work district tournaments outside his/her indicated preference area(s) if selected, but only on dates that do not conflict with assignments in his/her area of preference. Officials will also indicate their availability to work boys, girls or both, and whether they will have worked at least 10 games in each category.

## Information on "Calling for a Cure" Campaign

The Missouri State High School Activities Association has joined in the fight against cancer by partnering with the "Calling for a Cure" campaign for the 2008-09 sports season.

All girls and boys basketball officials will be able to go to [wwwFOUNDATIONSRESOURCEGROUP.COM](http://wwwFOUNDATIONSRESOURCEGROUP.COM) and order a Pink Fox 40 whistle for \$5.00. Your whistle will then be shipped directly to you. You will then join officials across America during the week of January 26-31 and blow your pink whistle during any game worked that week.

Officials are invited to make a voluntary donation that day to "Calling for a Cure". All funds raised will be donated to "Coaches vs. Cancer" and/or the "Kay Yow Fund" in the name of the MSHSAA sports officials. We encourage you to join this very worthy cause.

### 2008 State

#### Cross Country Officials

Emry Dilday (Springfield)  
Tom Turner (Fulton)  
Dave Carlson (Columbia)  
Ron Whittaker (Mexico)  
Jim Schmuck (Wildwood)  
Frank Lemons (New London)  
Joe Schroeder (Columbia)



## Minority Women Coaches Program

- The NFHS is looking to train 200 minority women who are interested in coaching or have coached for one year or less.
- Course materials will be self-driven, interactive on-line training.
- Upon course completion, the coaches' names will be entered into the National Coaching Registry for potential job applicant pool.
- The cost of the course is free.
- For more information, contact B. Elliot Hopkins, CAA, at [ehopkins@nfhs.org](mailto:ehopkins@nfhs.org).

*The National Federation of State High School Associations (NFHS) is the national service and administrative organization for high school athletics and fine arts programs in speech, debate, theatre and music. The NFHS is headquartered in Indianapolis, Indiana, and represents approximately 18,200 high schools and 12 million students nationwide.*

**MSHSAA Member School Changes  
New Member Schools**

The MSHSAA welcomes the following schools as new members for the 2008-2009 school year:

- ACE at Southeast High School
- Bridges Program High School
- Christian High School
- Confluence Prep Academy Charter High School
- Hiram Neuwoehner High School
- Holy Family Junior High School
- Imagine College Prep Charter (Formerly E.H. Lyle Charter)
- Immaculate Conception Junior High School
- Lift for Life Academy Charter High School
- McKinley Classical Leadership High School
- Normandy Technical High School
- Northview High School
- Nowlin Middle School
- Phelps County Junior High School
- Raytown Central Middle School
- Ripley County Junior High School
- Shawnee Junior High School
- Southview High School
- Staley High School
- St. Peter Junior High School
- Van Horn (Kansas City) High School

**Affiliate Registered Schools**

- Blue Ridge Christian High School
- Brookside Frontier Math and Science High School
- Center Place Restoration high School
- Christian Academy of Greater St. Louis
- Christian Fellowship High School
- Cristo Rey High School
- Eagle Ridge Christian High School
- Faith Community Christian High School
- New Salem Baptist Academy
- North County Christian High School
- Ozanam High School
- Riverview Bible Baptist Christian High School
- St. Louis Christian Academy
- Thomas Jefferson High School
- Tower Grove Christian High School
- Tri-City Christian High School

**Schools No Longer Members**

- Bishop Hogan Middle School
- Englewood Christian High School
- Northwest Valley Middle School
- Raymondville Junior High School
- St. John the Baptist High School



[www.mshsaa.org](http://www.mshsaa.org)

**Missouri State High School  
Activities Association**



*2008-09 Board of Directors*



**Paul Kinder**  
Kansas City District  
Superintendent  
Blue Springs R-IV  
Term Expires 2010



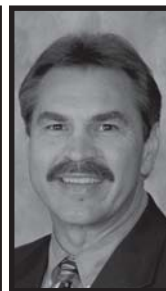
**Blane Keel**  
Vice Pres.  
SE District  
Superintendent  
Clearwater R-1  
Term Expires 2011



**Ken Eaton**  
Northwest District  
Superintendent  
Mound City R-2  
Term Expires 2012



**Toni Hill**  
At-Large District 2  
Superintendent  
Portageville Schools  
Term Expires 2009



**Michael Gohn**  
St. Louis District  
Dist. Athletic Director  
Parkway Schools  
Term Expires 2009



**Kevin Coleman**  
Central District  
Superintendent  
Kingsville R-1  
Term Expires 2009



**Paul Sulser**  
Northeast District  
Principal  
Highland HS  
Term Expires 2012



**Harvey Richards**  
South Central District  
Superintendent  
Steelville R-III  
Term Expires 2010



**Travis Brown**  
At-Large District 1  
Principal  
Beaumont HS  
Term Expires 2011



**Dennis Cornish**  
Southwest District  
Principal  
Lockwood HS  
Term Expires 2011

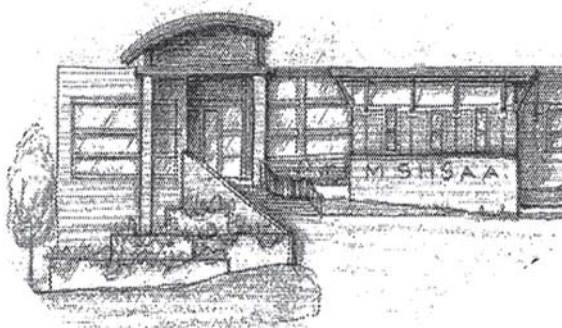
Mission Statement

"The MSHSAA promotes the value of participation, sportsmanship, team play, and personal excellence to develop citizens who make positive contributions to their community and support the democratic principles of our state and nation."

Contact Info.

**MSHSAA**  
1 N. Keene St., PO Box 1328  
Columbia, MO 65205  
(573) 875-4880  
Fax (573) 875-1450  
[www.mshsaa.org](http://www.mshsaa.org)  
email@mshsaa.org

**Email Policy:** Due to the high volume of email messages received by the Association, an expedited personal response may not always be possible. The MSHSAA staff will respond first to more traditional means of communication such as telephone calls, written correspondence and faxes. The MSHSAA office can be reached at (573) 875-4880 during regular office hours. As time permits, staff will reply to email messages that include the sender's complete name, address and phone number. Questions regarding student eligibility or specific MSHSAA by-laws should first be directed to your local school administrator. By Board policy, our staff is not permitted to answer specific eligibility inquiries via email, and any follow-up questions to the MSHSAA should be done via telephone or written correspondence.



Proud Member  
National Federation of High School Associations

# Participation of Bands at Basketball Contests

Part of the excitement at many of our interscholastic basketball contests involves the spirited music supplied by a pep or jazz band. The performances of the musical group are enjoyed by all attending the game.

To ensure full appreciation of the group's performances certain guidelines, indicating when to play, should be followed. Band directors are reminded that as a courtesy to the teams and cheerleaders of both schools, the performances by the band should be limited to a certain schedule.

The guidelines listed below indicate an appropriate playing schedule for the band.

- The band should play before the game begins. The director should coordinate the schedule so that team members may be announced if desired by the host school.

- The band should play at halftime of the contest.
- The band may play at the end of the contest if desired.
- The band should not play during time-outs or the break between quarters in order to allow the cheerleaders the opportunity to lead cheers. Players and coaches need to be able to communicate with each other during time-outs.
- Musical instruments may not be used as noise makers during the contests.

The band director and his/her performing group will display courtesy and respect to the players and cheerleaders by playing at specific times. With good planning and cooperation the school pep band will be an integral part of the excitement and spirit of the contests.



## Routing Report

This routing report is provided to assist principals and athletic directors in ensuring that the *MSHSAA Journal* is seen by all necessary school personnel. Each individual should check the appropriate box after having read the *Journal* and pass it on to the next individual on the list or return it to the athletic administrator.

- Athletic Director
- Academic Competition Sponsor
- Band/Music Director
- Boys Basketball Coach
- Girls Basketball Coach
- Boys Cross Country Coach
- Girls Cross Country Coach
- Baseball Coach
- Cheerleading Sponsor
- Football Coach
- Boys Golf Coach
- Girls Golf Coach
- Speech and Debate Sponsor
- Boys Soccer Coach
- Girls Soccer Coach
- Softball Coach
- Girls Swimming Coach
- Boys Swimming Coach
- Boys Tennis Coach
- Girls Tennis Coach
- Boys Track & Field Coach
- Girls Track & Field Coach
- Girls Volleyball Coach
- Boys Volleyball Coach
- Wrestling Coach
- Other: \_\_\_\_\_
- Other: \_\_\_\_\_
- Other: \_\_\_\_\_

## MSHSAA

1 North Keene St.  
PO Box 1328  
Columbia, MO 65205-1328

Nonprofit Org.  
U.S. POSTAGE  
PAID  
COLUMBIA, MO  
Permit 5